

# VICEROY BRICKELL

## THE RESIDENCES

RESIDENTIAL FLOOR PLANS



# LOCATION





# SITE MAP

## VICEROY BRICKELL THE RESIDENCES





# EAST VIEWS





# NORTH EAST VIEWS





# NORTH VIEWS





# NORTH WEST VIEWS





# SOUTH WEST VIEWS





# SOUTH VIEWS





# SOUTH EAST VIEWS





VICEROY BRICKELL  
THE RESIDENCES

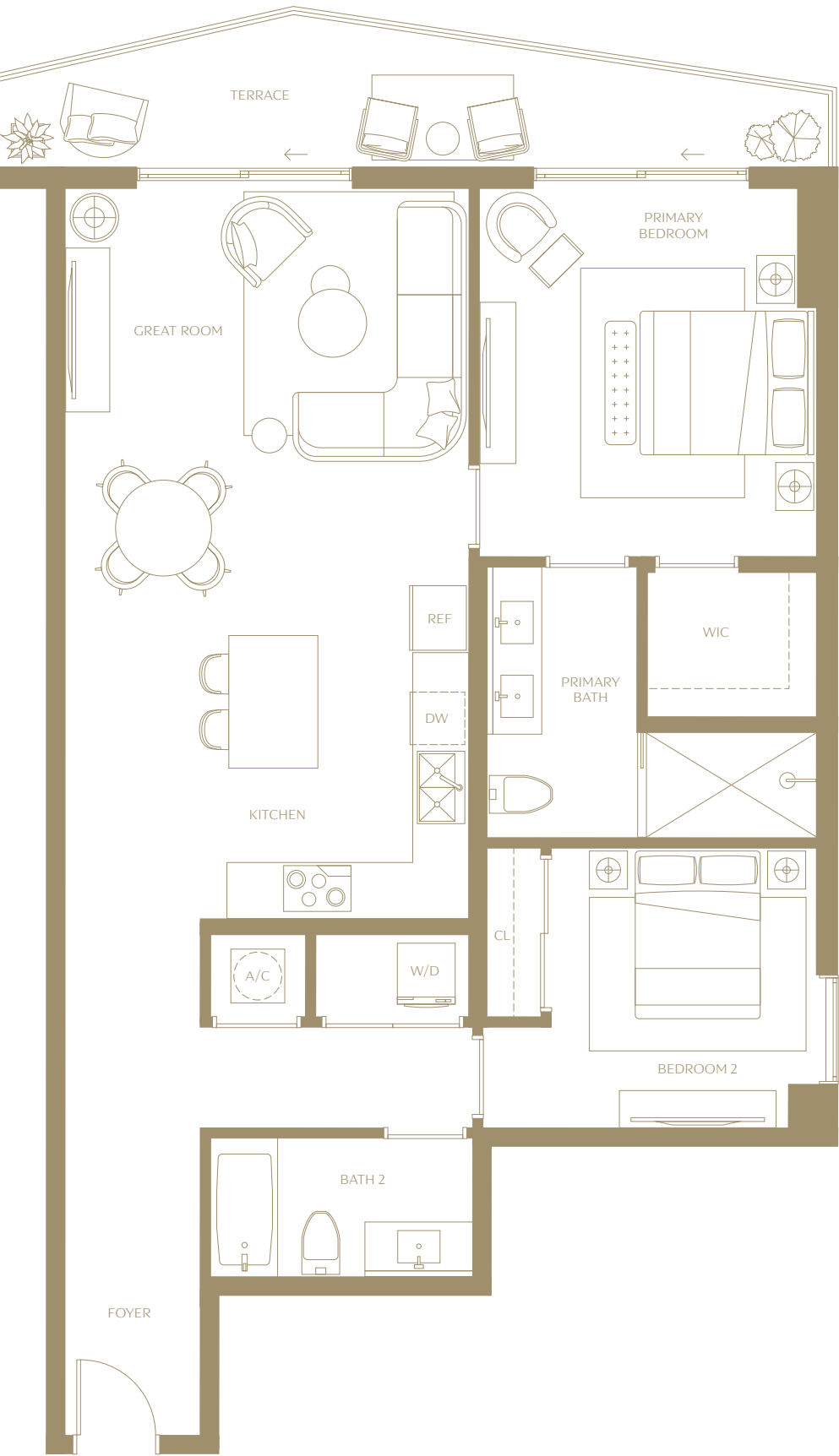
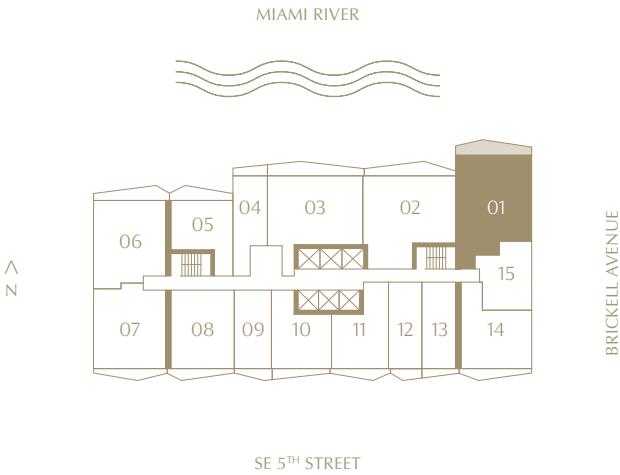
Residence 01

2 BEDROOMS | 2 BATHROOMS  
LEVELS 15 TO 42  
NORTHEAST EXPOSURE

INTERIOR  
1,217 SQ. FT. | 113.06 SQM

TERRACE  
141 SQ. FT. | 13.10 SQM

TOTAL  
1,358 SQ. FT. | 113.06 SQM





# VICEROY BRICKELL

## THE RESIDENCES

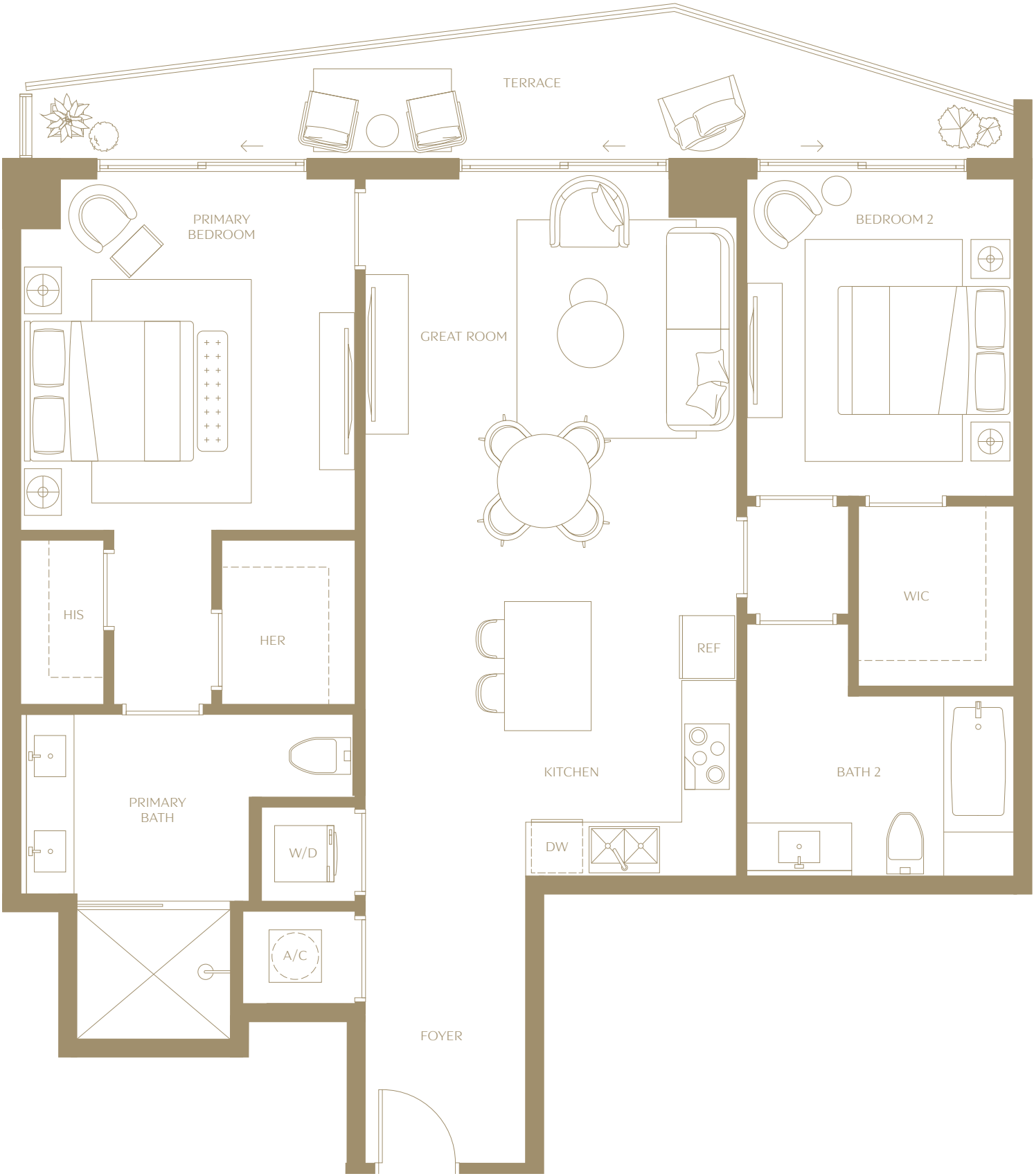
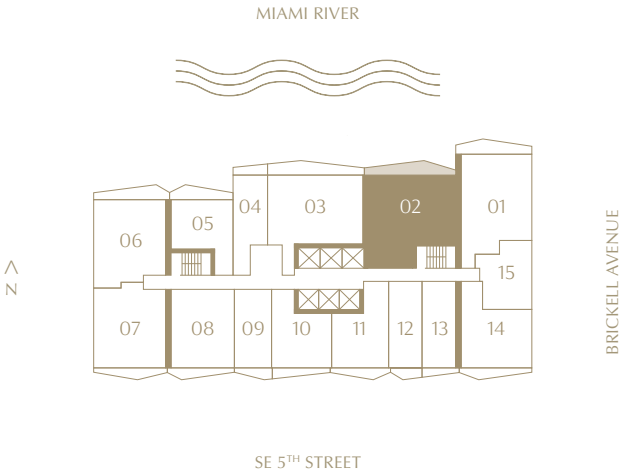
### Residence 02

2 BEDROOMS | 2 BATHROOMS  
LEVELS 15 TO 42  
NORTH EXPOSURE

INTERIOR  
1,286 SQ. FT. | 119.47 SQM

TERRACE  
161 SQ. FT. | 14.96 SQM

TOTAL  
1,447 SQ. FT. | 134.43 SQM



⚠ The dimensions stated for this floor plan are approximate because there are various recognized methods for calculating the square footage of a unit. The square footage stated here is calculated from the exterior boundaries of the exterior walls to the centerline of interior demising walls without deductions for cutouts, curves, or architectural features. This method typically results in quoted dimensions greater than the dimensions that would be determined by using other accepted methods. The definition of "Unit" and the calculation method to be relied upon is set forth by 444 BRICKELL TWO, LLC (the "Developer") in Developer's prospectus which method may result in a square footage calculation less than the result of the calculation method used here. VICEROY BRANDS, LLC owns the mark and name Viceroy®. The Developer is permitted to use the name and logo of The Related Group® and Viceroy® pursuant to license agreements which are valid unless terminated or expired; neither The Related Group nor Viceroy Brands, LLC are the Developer. Consult the Developer's prospectus to learn what is included with Unit purchase and to understand Unit dimensions. 2024 © 444 BRICKELL TWO, LLC with all rights reserved.



VICEROY BRICKELL  
THE RESIDENCES

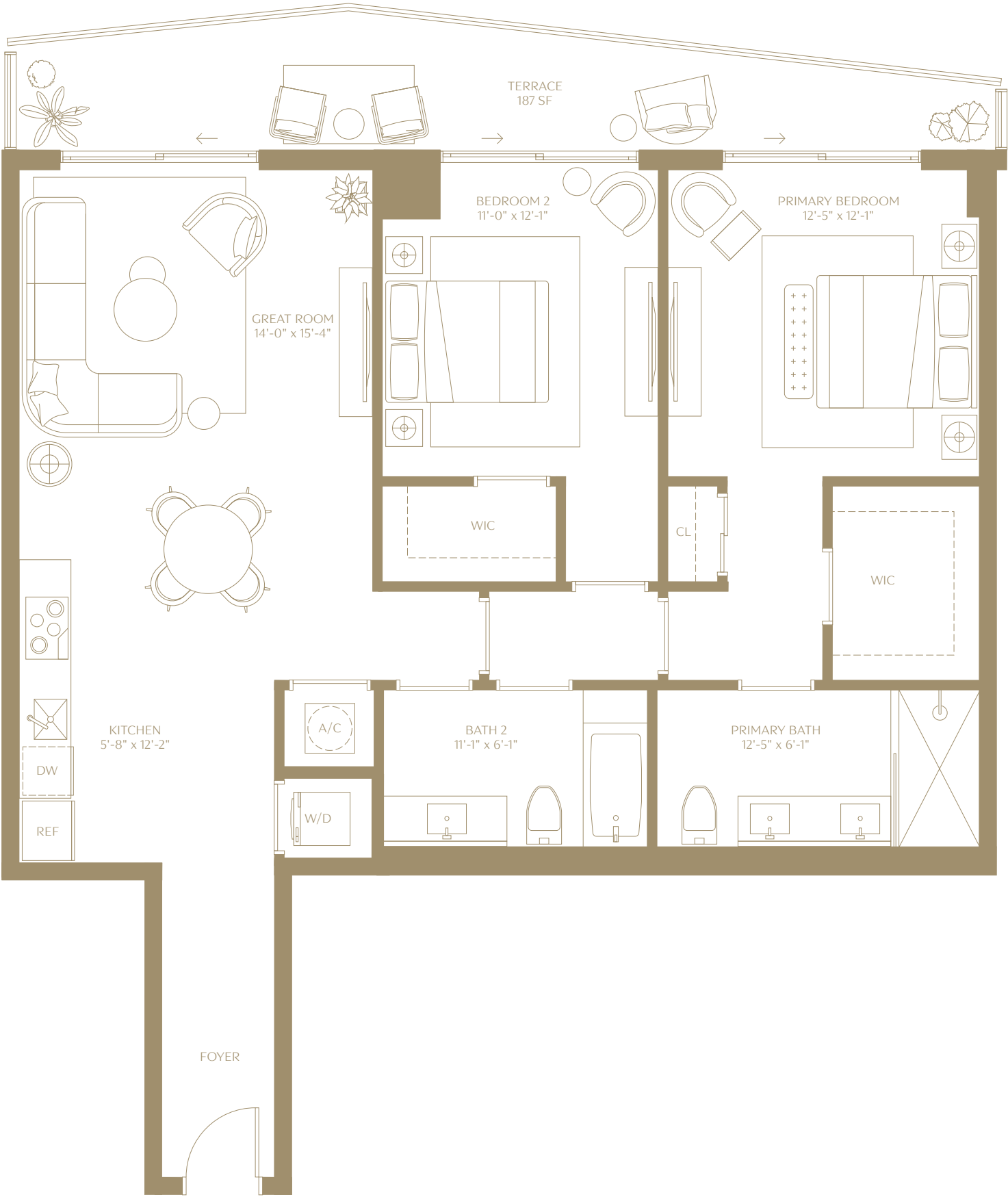
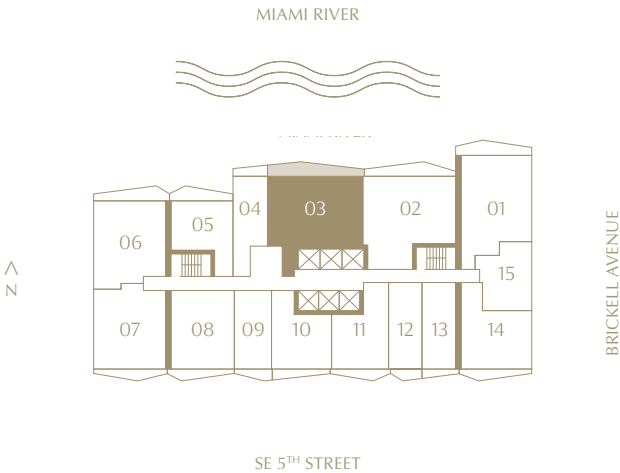
Residence 03

2 BEDROOMS | 2 BATHROOMS  
LEVELS 15 TO 42  
NORTH EXPOSURE

INTERIOR  
1,235 SQ. FT. | 114.74 SQM

TERRACE  
187 SQ. FT. | 17.37 SQM

TOTAL  
1,422 SQ. FT. | 132.11 SQM



⚠ The dimensions stated for this floor plan are approximate because there are various recognized methods for calculating the square footage of a unit. The square footage stated here is calculated from the exterior boundaries of the exterior walls to the centerline of interior demising walls without deductions for cutouts, curves, or architectural features. This method typically results in quoted dimensions greater than the dimensions that would be determined by using other accepted methods. The definition of "Unit" and the calculation method to be relied upon is set forth by 444 BRICKELL TWO, LLC (the "Developer") in Developer's prospectus which method may result in a square footage calculation less than the result of the calculation method used here. VICEROY BRANDS, LLC owns the mark and name Viceroy®. The Developer is permitted to use the name and logo of The Related Group® and Viceroy® pursuant to license agreements which are valid unless terminated or expired; neither The Related Group nor Viceroy Brands, LLC are the Developer. Consult the Developer's prospectus to learn what is included with Unit purchase and to understand Unit dimensions. 2024 © 444 BRICKELL TWO, LLC with all rights reserved.



VICEROY BRICKELL  
THE RESIDENCES

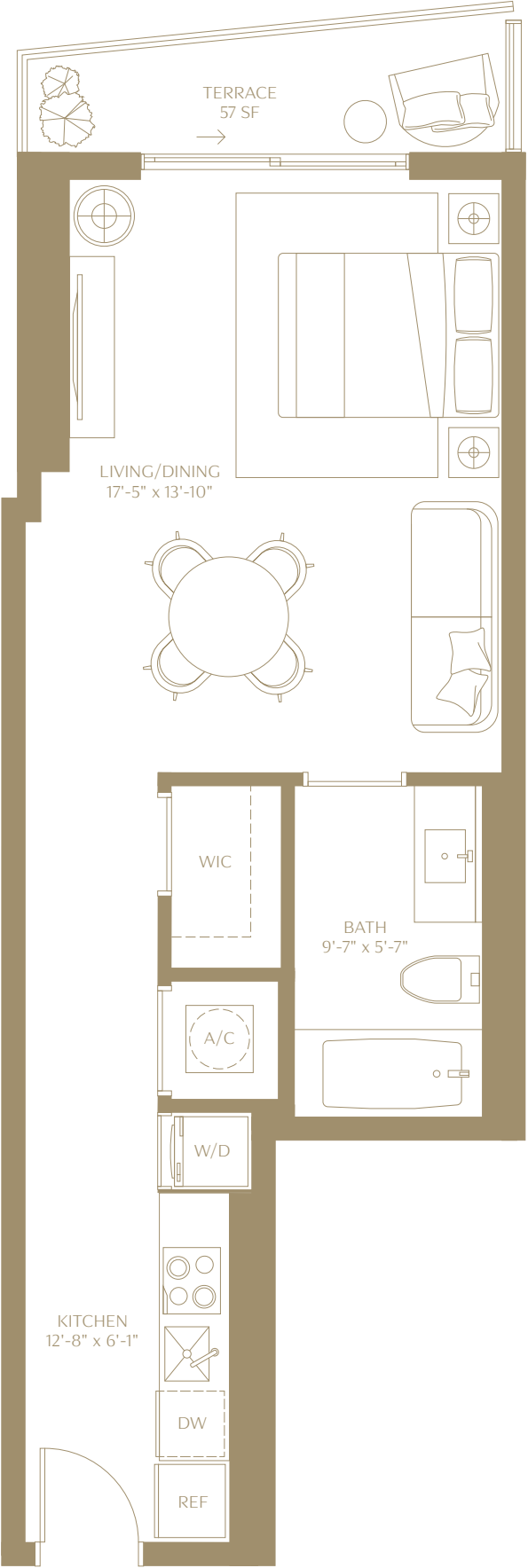
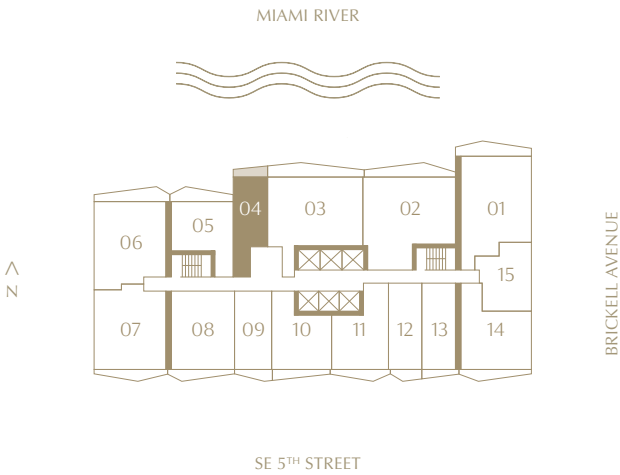
Residence 04

STUDIO | 1 BATHROOM  
LEVELS 15 TO 42  
NORTH EXPOSURE

INTERIOR  
519 SQ. FT. | 48.22 SQM

TERRACE  
57 SQ. FT. | 5.30 SQM

TOTAL  
576 SQ. FT. | 53.51 SQM



⚠ The dimensions stated for this floor plan are approximate because there are various recognized methods for calculating the square footage of a unit. The square footage stated here is calculated from the exterior boundaries of the exterior walls to the centerline of interior demising walls without deductions for cutouts, curves, or architectural features. This method typically results in quoted dimensions greater than the dimensions that would be determined by using other accepted methods. The definition of "Unit" and the calculation method to be relied upon is set forth by 444 BRICKELL TWO, LLC (the "Developer") in Developer's prospectus which method may result in a square footage calculation less than the result of the calculation method used here. VICEROY BRANDS, LLC owns the mark and name Viceroy®. The Developer is permitted to use the name and logo of The Related Group® and Viceroy® pursuant to license agreements which are valid unless terminated or expired; neither The Related Group nor Viceroy Brands, LLC are the Developer. Consult the Developer's prospectus to learn what is included with Unit purchase and to understand Unit dimensions. 2024 © 444 BRICKELL TWO, LLC with all rights reserved.



# VICEROY BRICKELL

## THE RESIDENCES

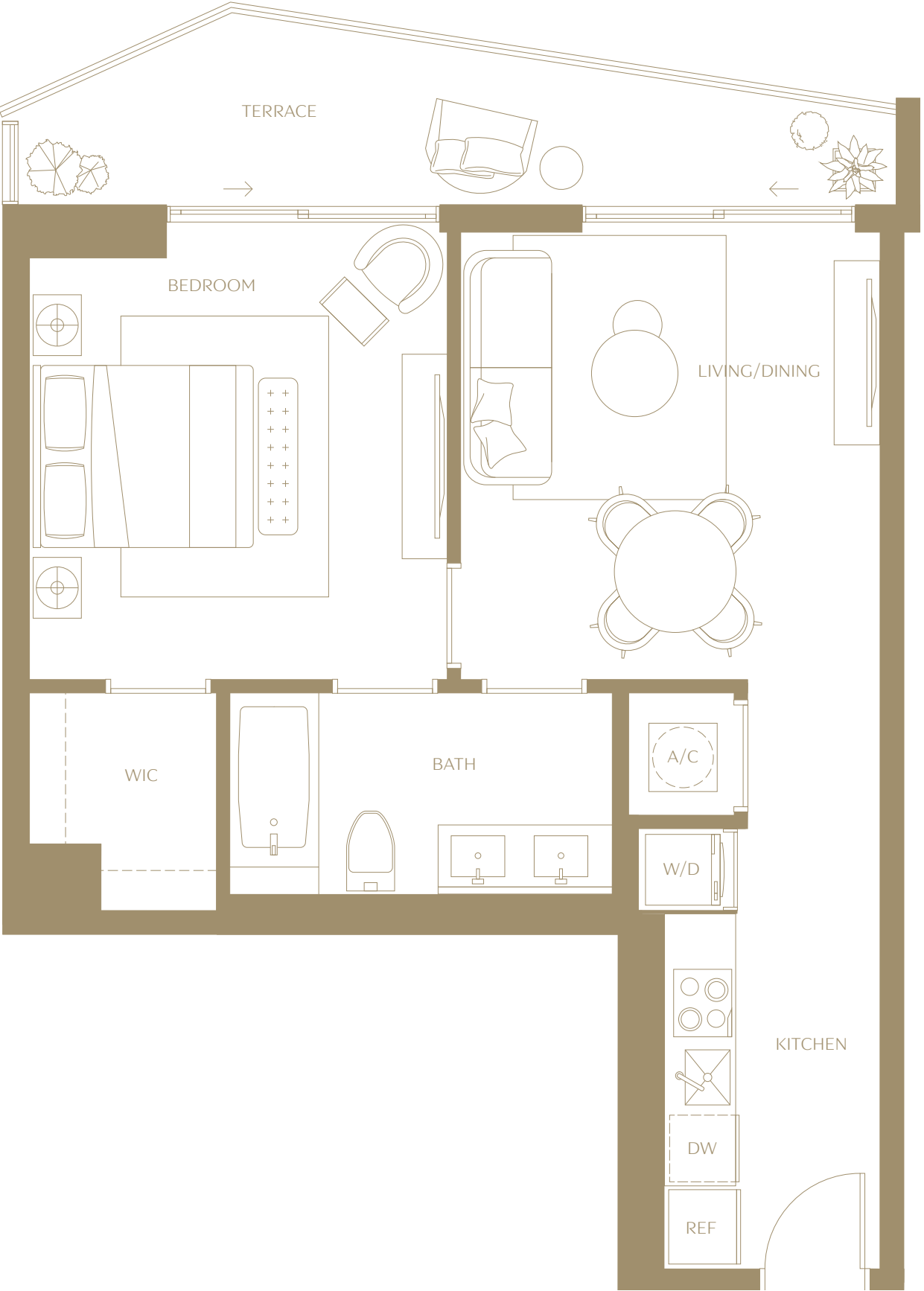
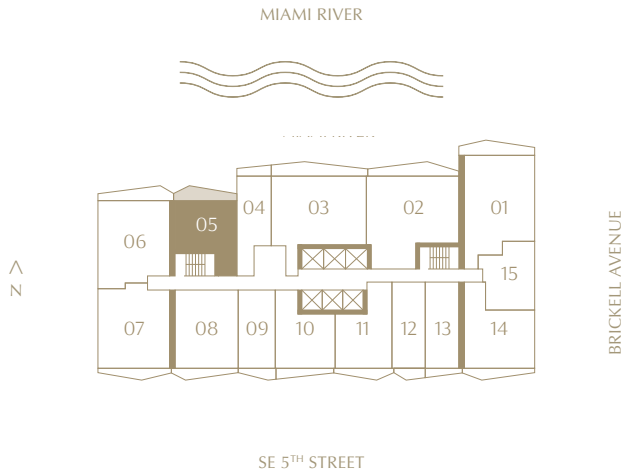
### Residence 05

1 BEDROOM | 1 BATHROOM  
LEVELS 15 TO 42  
NORTH EXPOSURE

INTERIOR  
670 SQ. FT. | 62.25 SQM

TERRACE  
117 SQ. FT. | 10.87 SQM

TOTAL  
787 SQ. FT. | 73.25 SQM





VICEROY BRICKELL  
THE RESIDENCES

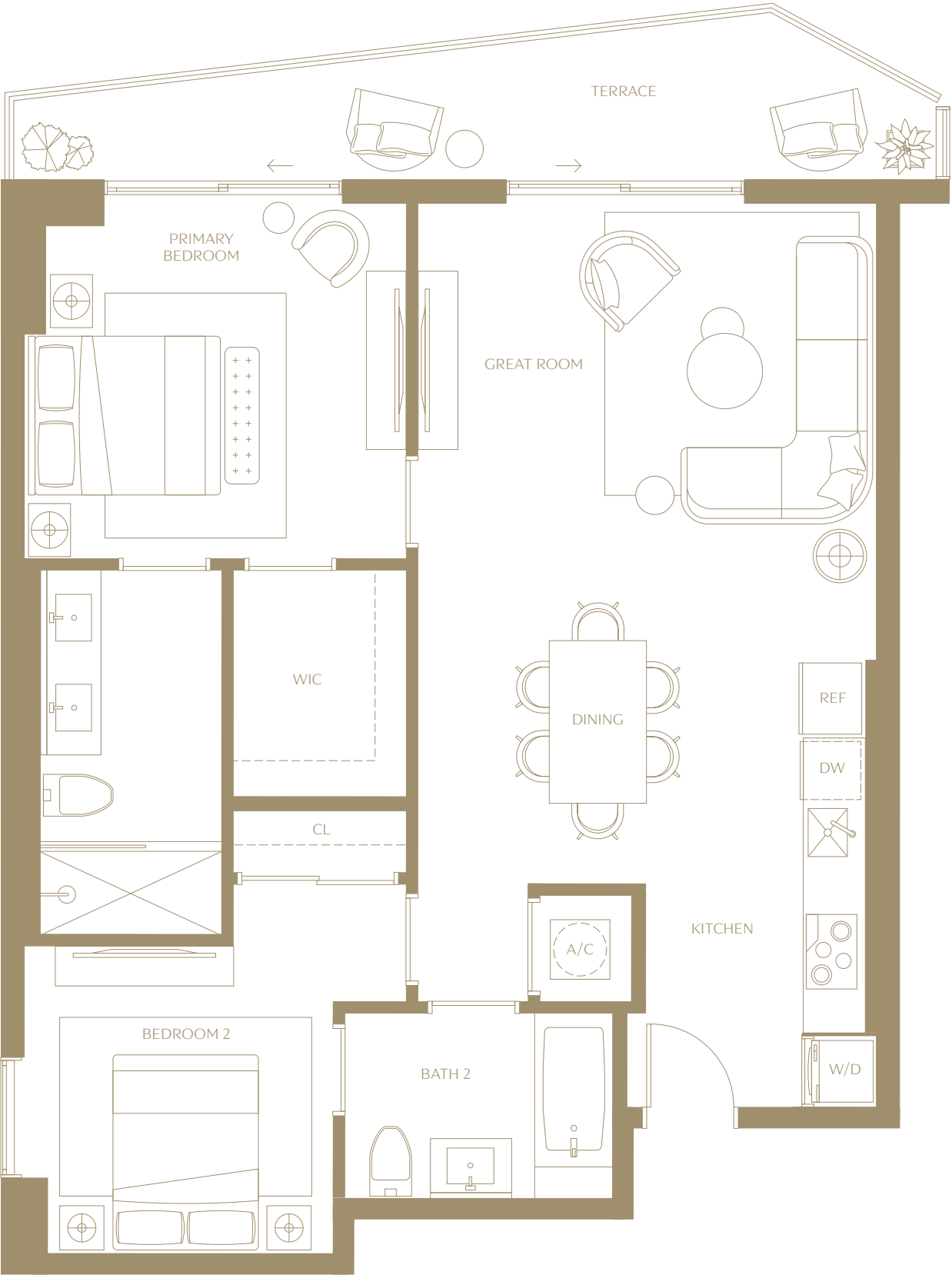
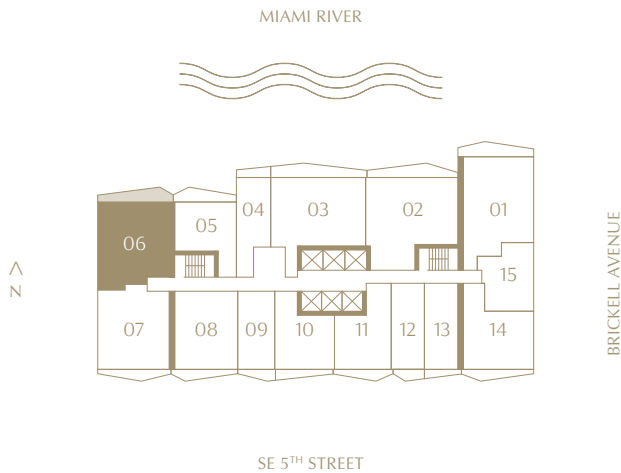
Residence 06

2 BEDROOMS | 2 BATHROOMS  
LEVELS 15 TO 42  
NORTHWEST EXPOSURE

INTERIOR  
1,041 SQ. FT. | 96.71 SQM

TERRACE  
138 SQ. FT. | 12.82 SQM

TOTAL  
1,179 SQ. FT. | 109.53 SQM



⚠ The dimensions stated for this floor plan are approximate because there are various recognized methods for calculating the square footage of a unit. The square footage stated here is calculated from the exterior boundaries of the exterior walls to the centerline of interior demising walls without deductions for cutouts, curves, or architectural features. This method typically results in quoted dimensions greater than the dimensions that would be determined by using other accepted methods. The definition of "Unit" and the calculation method to be relied upon is set forth by 444 BRICKELL TWO, LLC (the "Developer") in Developer's prospectus which method may result in a square footage calculation less than the result of the calculation method used here. VICEROY BRANDS, LLC owns the mark and name Viceroy®. The Developer is permitted to use the name and logo of The Related Group® and Viceroy® pursuant to license agreements which are valid unless terminated or expired; neither The Related Group nor Viceroy Brands, LLC are the Developer. Consult the Developer's prospectus to learn what is included with Unit purchase and to understand Unit dimensions. 2024 © 444 BRICKELL TWO, LLC with all rights reserved.



# VICEROY BRICKELL

## THE RESIDENCES

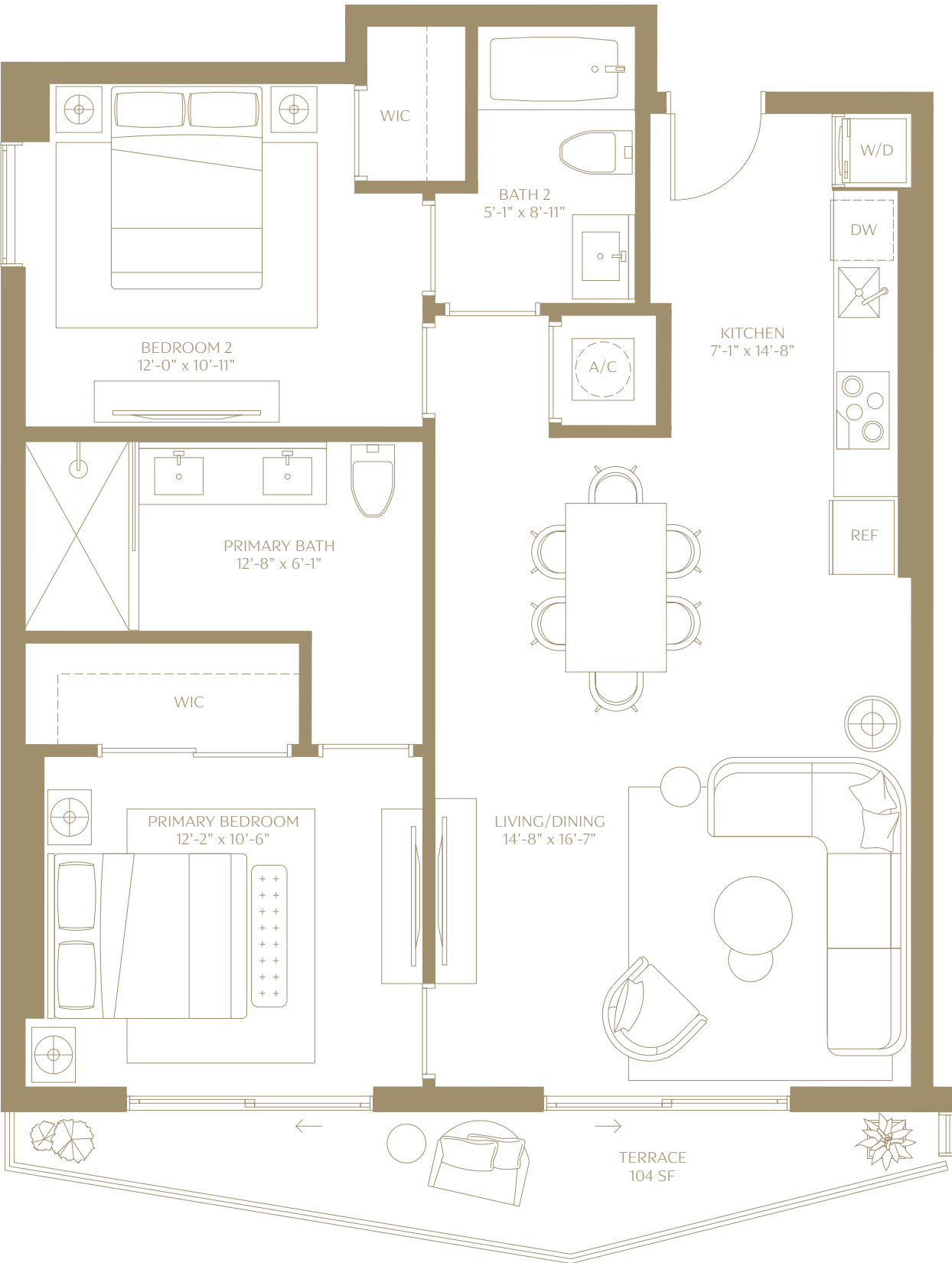
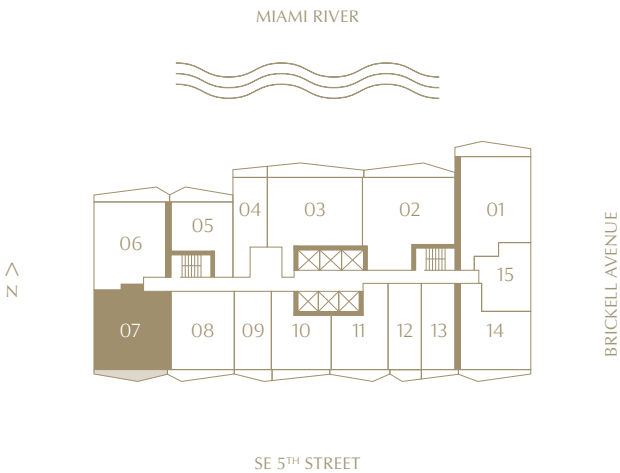
### Residence 07

2 BEDROOMS | 2 BATHROOMS  
LEVELS 15 TO 42  
SOUTHWEST EXPOSURE

INTERIOR  
1,030 SQ. FT. | 95.69 SQM

TERRACE  
104 SQ. FT. | 9.66 SQM

TOTAL  
1,134 SQ. FT. | 105.35 SQM





# VICEROY BRICKELL

## THE RESIDENCES

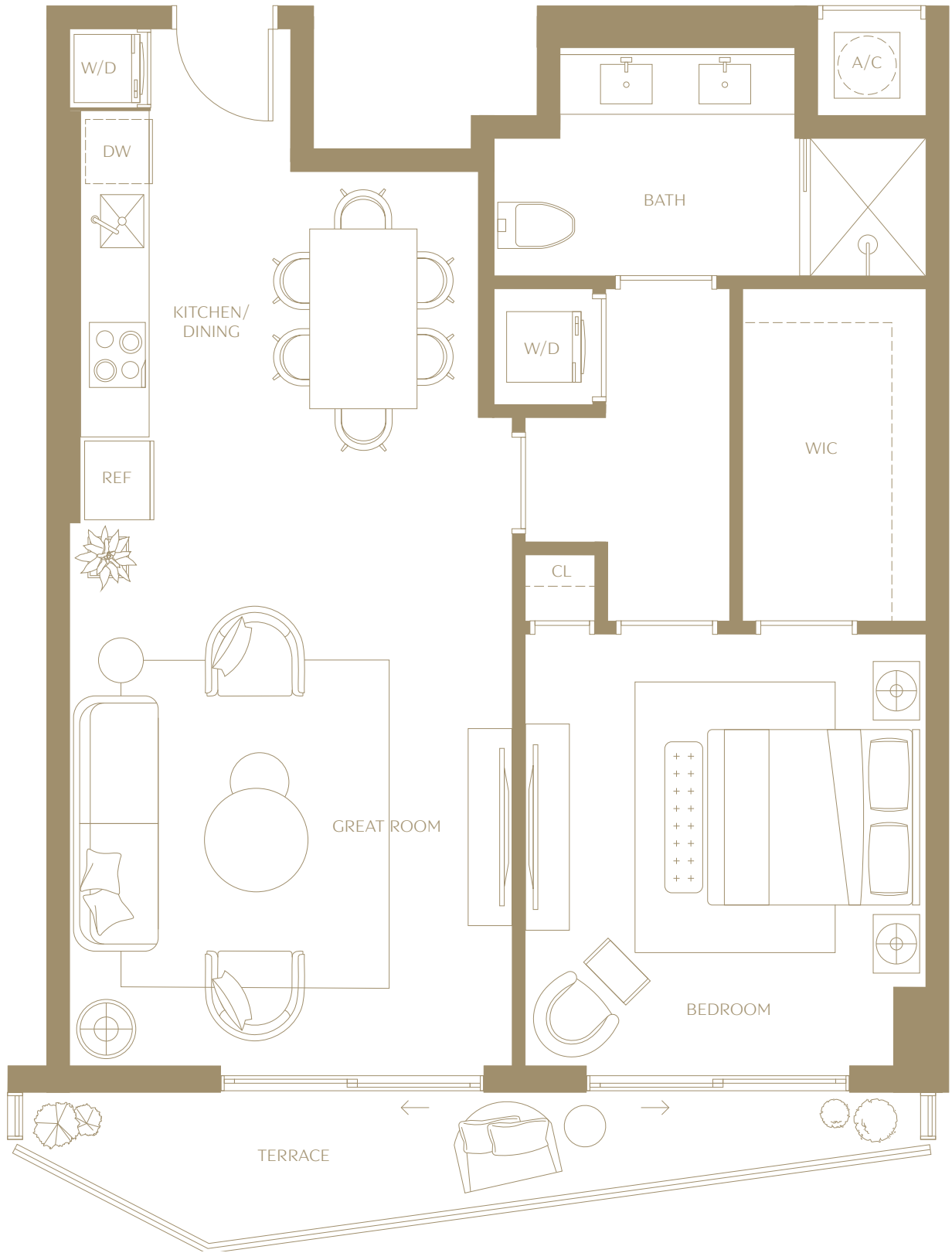
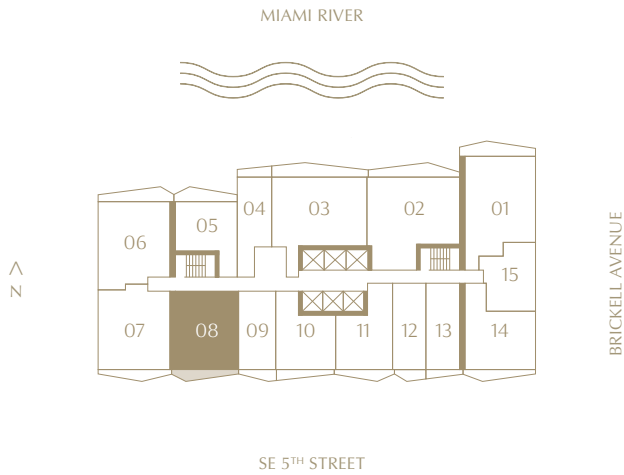
### Residence 08

1 BEDROOM | 1 BATHROOM  
LEVELS 15 TO 42  
SOUTH EXPOSURE

INTERIOR  
862 SQ. FT. | 80.08 SQM

TERRACE  
96 SQ. FT. | 8.92 SQM

TOTAL  
958 SQ. FT. | 89 SQM



ⓘ The dimensions stated for this floor plan are approximate because there are various recognized methods for calculating the square footage of a unit. The square footage stated here is calculated from the exterior boundaries of the exterior walls to the centerline of interior demising walls without deductions for cutouts, curves, or architectural features. This method typically results in quoted dimensions greater than the dimensions that would be determined by using other accepted methods. The definition of "Unit" and the calculation method to be relied upon is set forth by 444 BRICKELL TWO, LLC (the "Developer") in Developer's prospectus which method may result in a square footage calculation less than the result of the calculation method used here. VICEROY BRANDS, LLC owns the mark and name Viceroy®. The Developer is permitted to use the name and logo of The Related Group® and Viceroy® pursuant to license agreements which are valid unless terminated or expired; neither The Related Group nor Viceroy Brands, LLC are the Developer. Consult the Developer's prospectus to learn what is included with Unit purchase and to understand Unit dimensions. 2024 © 444 BRICKELL TWO, LLC with all rights reserved.



# VICEROY BRICKELL

## THE RESIDENCES

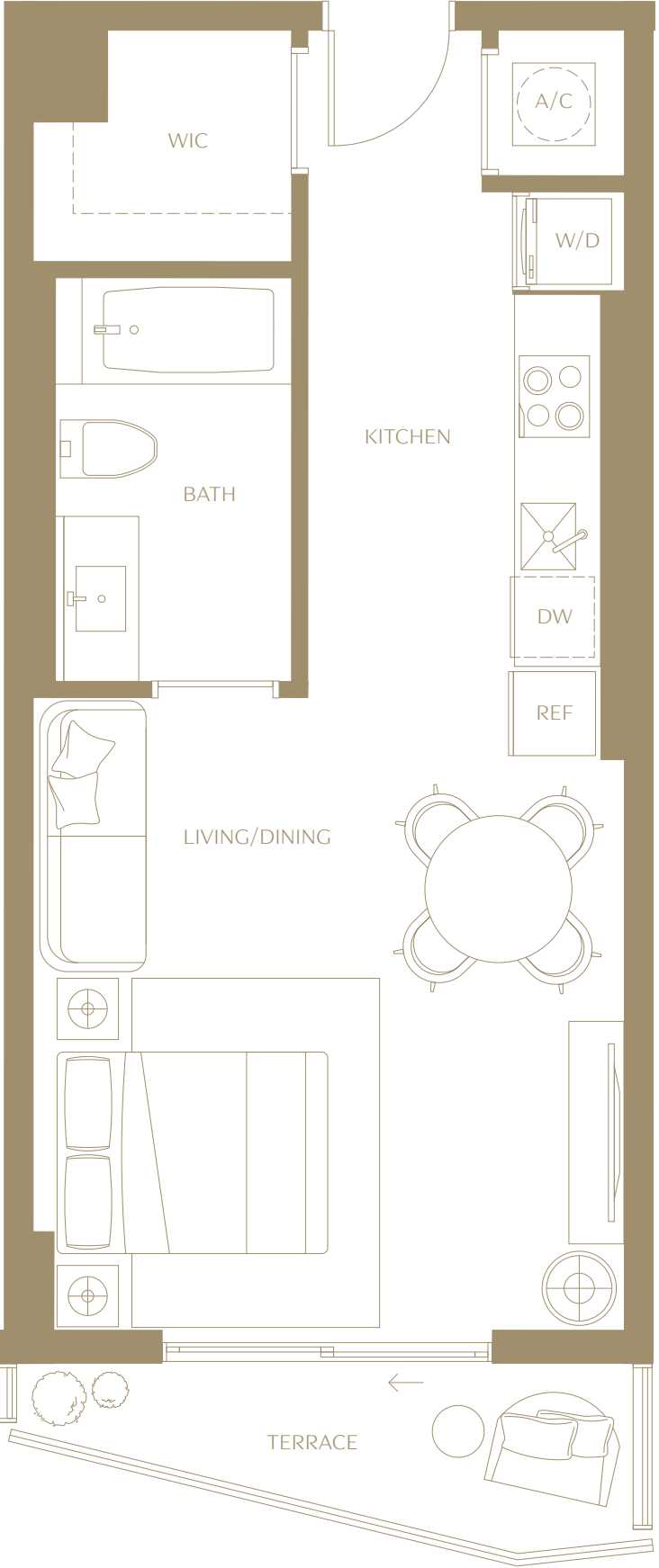
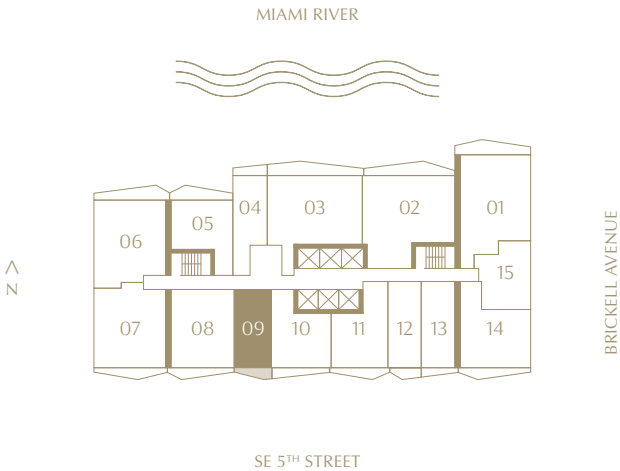
### Residence 09

STUDIO | 1 BATHROOM  
LEVELS 15 TO 42  
SOUTH EXPOSURE

INTERIOR  
485 SQ. FT. | 45.06 SQM

TERRACE  
57 SQ. FT. | 5.30 SQM

TOTAL  
542 SQ. FT. | 50.35 SQM



⚠ The dimensions stated for this floor plan are approximate because there are various recognized methods for calculating the square footage of a unit. The square footage stated here is calculated from the exterior boundaries of the exterior walls to the centerline of interior demising walls without deductions for cutouts, curves, or architectural features. This method typically results in quoted dimensions greater than the dimensions that would be determined by using other accepted methods. The definition of "Unit" and the calculation method to be relied upon is set forth by 444 BRICKELL TWO, LLC (the "Developer") in Developer's prospectus which method may result in a square footage calculation less than the result of the calculation method used here. VICEROY BRANDS, LLC owns the mark and name Viceroy®. The Developer is permitted to use the name and logo of The Related Group® and Viceroy® pursuant to license agreements which are valid unless terminated or expired; neither The Related Group nor Viceroy Brands, LLC are the Developer. Consult the Developer's prospectus to learn what is included with Unit purchase and to understand Unit dimensions. 2024 © 444 BRICKELL TWO, LLC with all rights reserved.



# VICEROY BRICKELL

## THE RESIDENCES

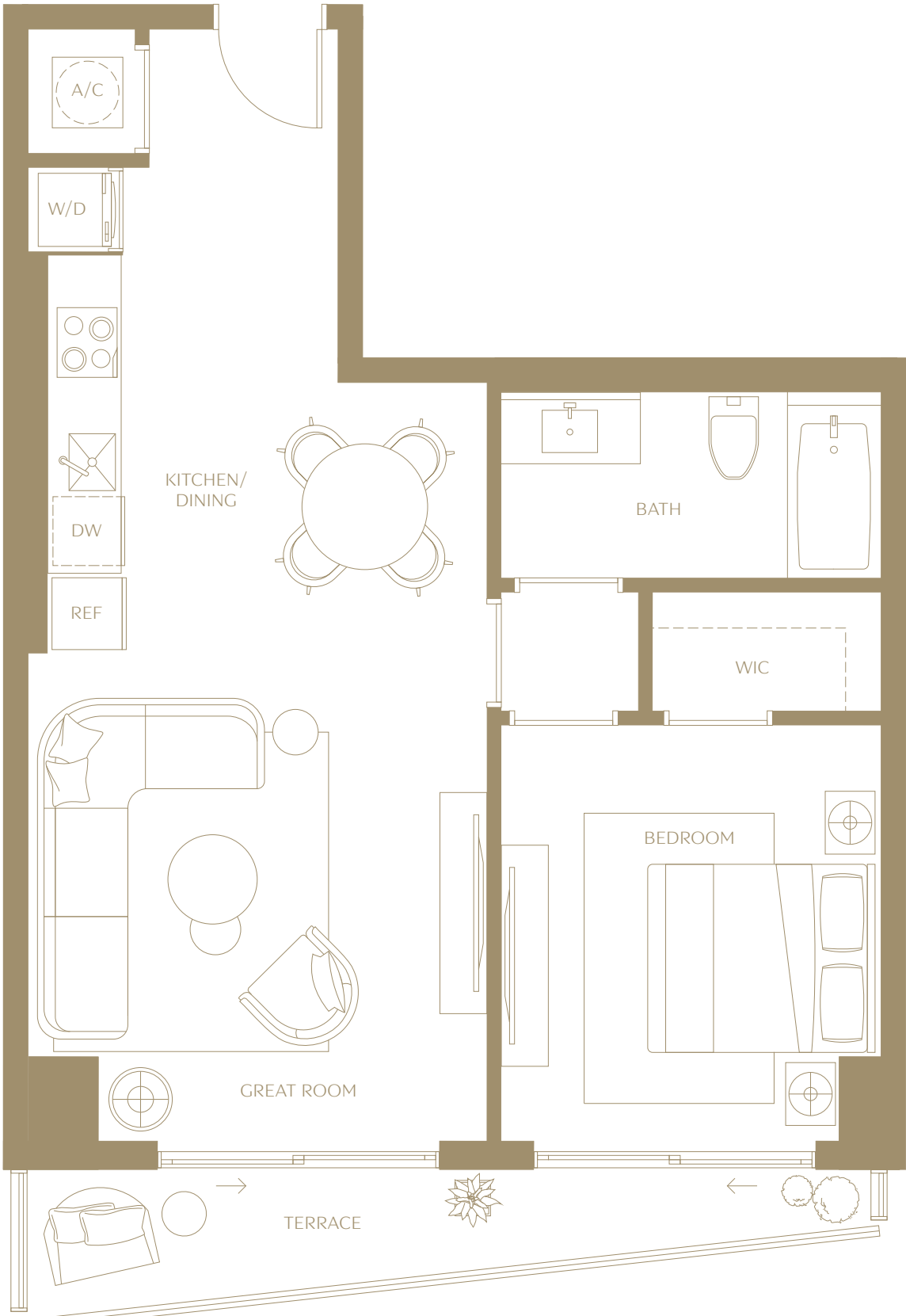
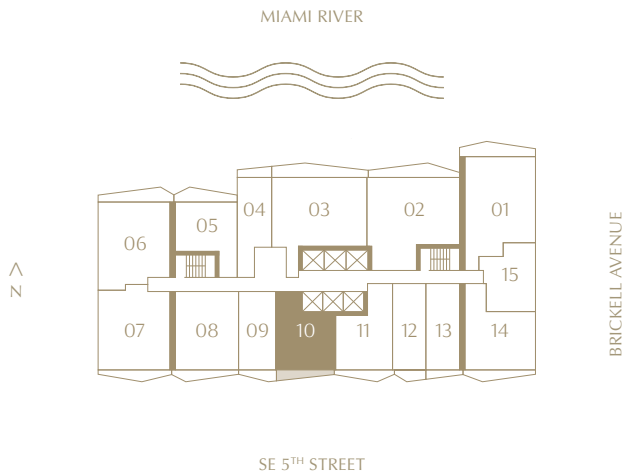
### Residence 10

1 BEDROOM | 1 BATHROOM  
LEVELS 15 TO 42  
SOUTH EXPOSURE

INTERIOR  
686 SQ. FT. | 63.73 SQM

TERRACE  
78 SQ. FT. | 7.25 SQM

TOTAL  
764 SQ. FT. | 70.98 SQM



ⓘ The dimensions stated for this floor plan are approximate because there are various recognized methods for calculating the square footage of a unit. The square footage stated here is calculated from the exterior boundaries of the exterior walls to the centerline of interior demising walls without deductions for cutouts, curves, or architectural features. This method typically results in quoted dimensions greater than the dimensions that would be determined by using other accepted methods. The definition of "Unit" and the calculation method to be relied upon is set forth by 444 BRICKELL TWO, LLC (the "Developer") in Developer's prospectus which method may result in a square footage calculation less than the result of the calculation method used here. VICEROY BRANDS, LLC owns the mark and name Viceroy®. The Developer is permitted to use the name and logo of The Related Group® and Viceroy® pursuant to license agreements which are valid unless terminated or expired; neither The Related Group nor Viceroy Brands, LLC are the Developer. Consult the Developer's prospectus to learn what is included with Unit purchase and to understand Unit dimensions. 2024 © 444 BRICKELL TWO, LLC with all rights reserved.



VICEROY BRICKELL  
THE RESIDENCES

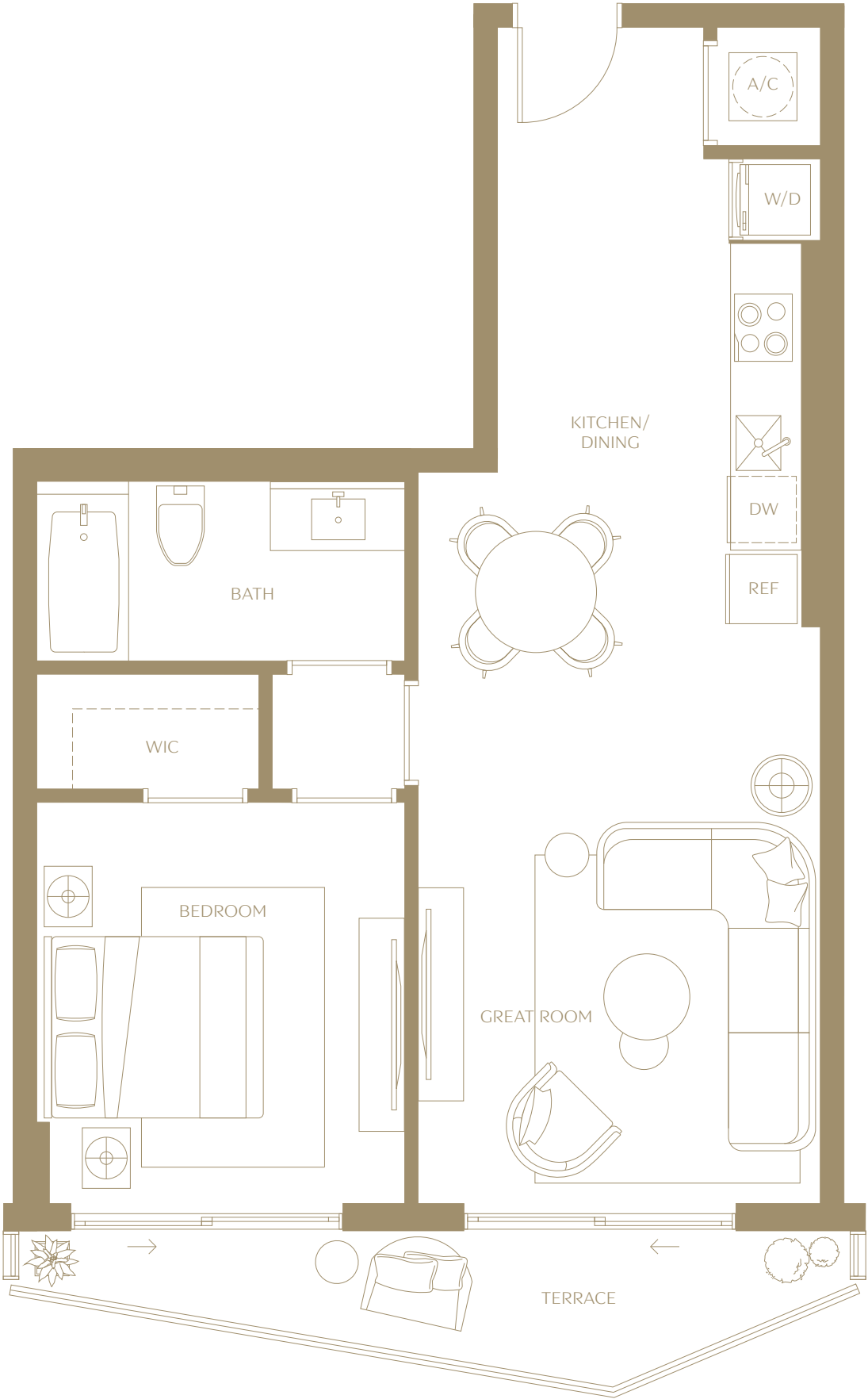
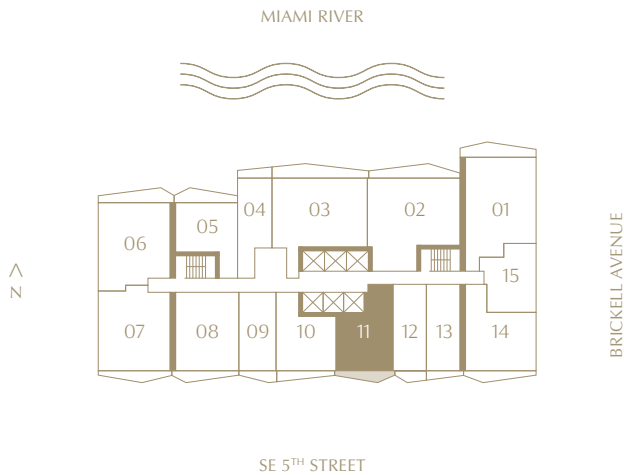
Residence 11

1 BEDROOM | 1 BATHROOM  
LEVELS 15 TO 42  
SOUTH EXPOSURE

INTERIOR  
699 SQ. FT. | 64.94 SQM

TERRACE  
85 SQ. FT. | 7.90 SQM

TOTAL  
784 SQ. FT. | 72.84 SQM



ⓘ The dimensions stated for this floor plan are approximate because there are various recognized methods for calculating the square footage of a unit. The square footage stated here is calculated from the exterior boundaries of the exterior walls to the centerline of interior demising walls without deductions for cutouts, curves, or architectural features. This method typically results in quoted dimensions greater than the dimensions that would be determined by using other accepted methods. The definition of "Unit" and the calculation method to be relied upon is set forth by 444 BRICKELL TWO, LLC (the "Developer") in Developer's prospectus which method may result in a square footage calculation less than the result of the calculation method used here. VICEROY BRANDS, LLC owns the mark and name Viceroy®. The Developer is permitted to use the name and logo of The Related Group® and Viceroy® pursuant to license agreements which are valid unless terminated or expired; neither The Related Group nor Viceroy Brands, LLC are the Developer. Consult the Developer's prospectus to learn what is included with Unit purchase and to understand Unit dimensions. 2024 © 444 BRICKELL TWO, LLC with all rights reserved.



VICEROY BRICKELL  
THE RESIDENCES

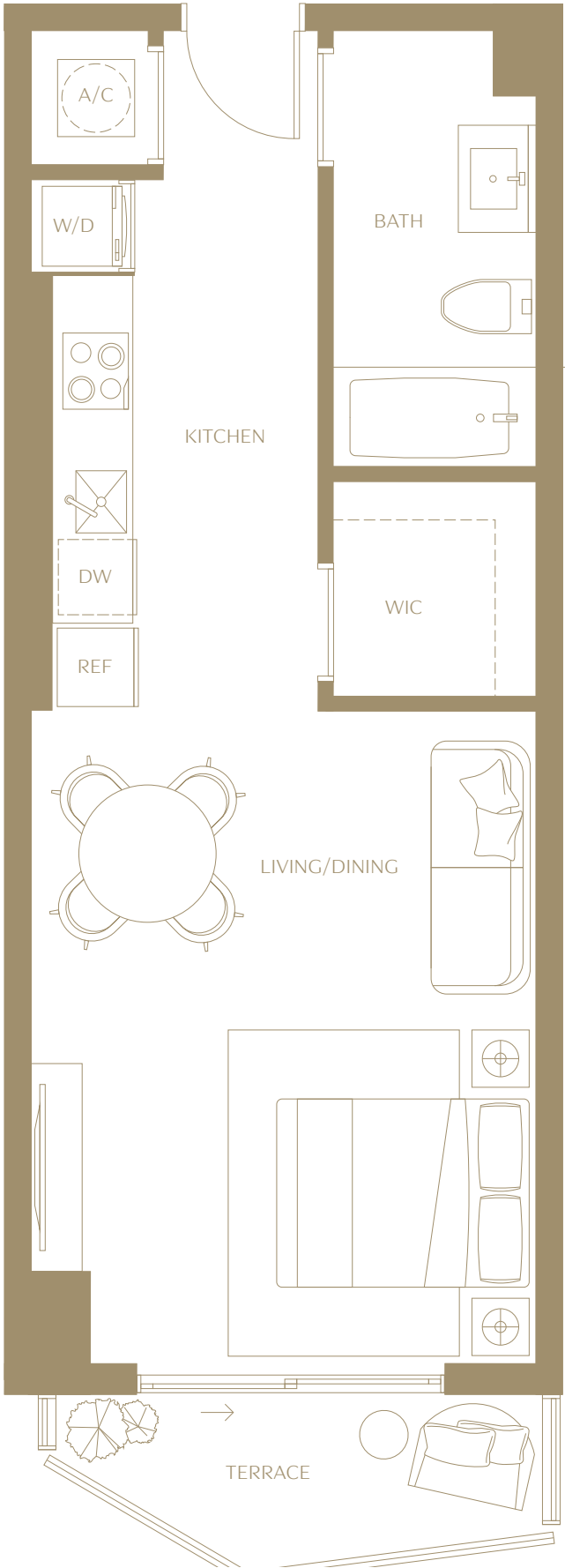
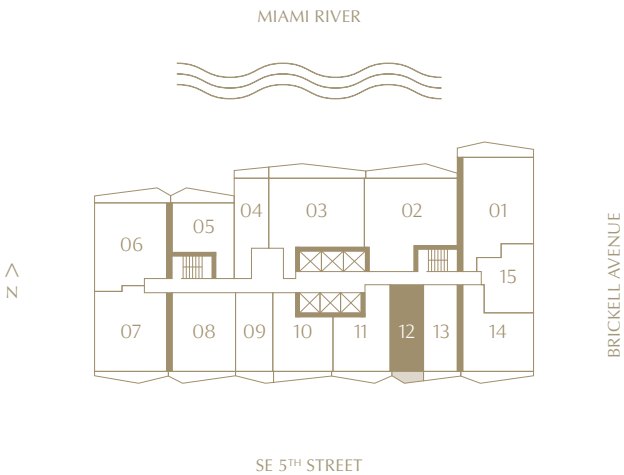
Residence 12

STUDIO | 1 BATHROOM  
LEVELS 15 TO 42  
SOUTH EXPOSURE

INTERIOR  
489 SQ. FT. | 45.43 SQM

TERRACE  
53 SQ. FT. | 4.92 SQM

TOTAL  
542 SQ. FT. | 50.35 SQM



⚠ The dimensions stated for this floor plan are approximate because there are various recognized methods for calculating the square footage of a unit. The square footage stated here is calculated from the exterior boundaries of the exterior walls to the centerline of interior demising walls without deductions for cutouts, curves, or architectural features. This method typically results in quoted dimensions greater than the dimensions that would be determined by using other accepted methods. The definition of "Unit" and the calculation method to be relied upon is set forth by 444 BRICKELL TWO, LLC (the "Developer") in Developer's prospectus which method may result in a square footage calculation less than the result of the calculation method used here. VICEROY BRANDS, LLC owns the mark and name Viceroy®. The Developer is permitted to use the name and logo of The Related Group® and Viceroy® pursuant to license agreements which are valid unless terminated or expired; neither The Related Group nor Viceroy Brands, LLC are the Developer. Consult the Developer's prospectus to learn what is included with Unit purchase and to understand Unit dimensions. 2024 © 444 BRICKELL TWO, LLC with all rights reserved.



VICEROY BRICKELL  
THE RESIDENCES

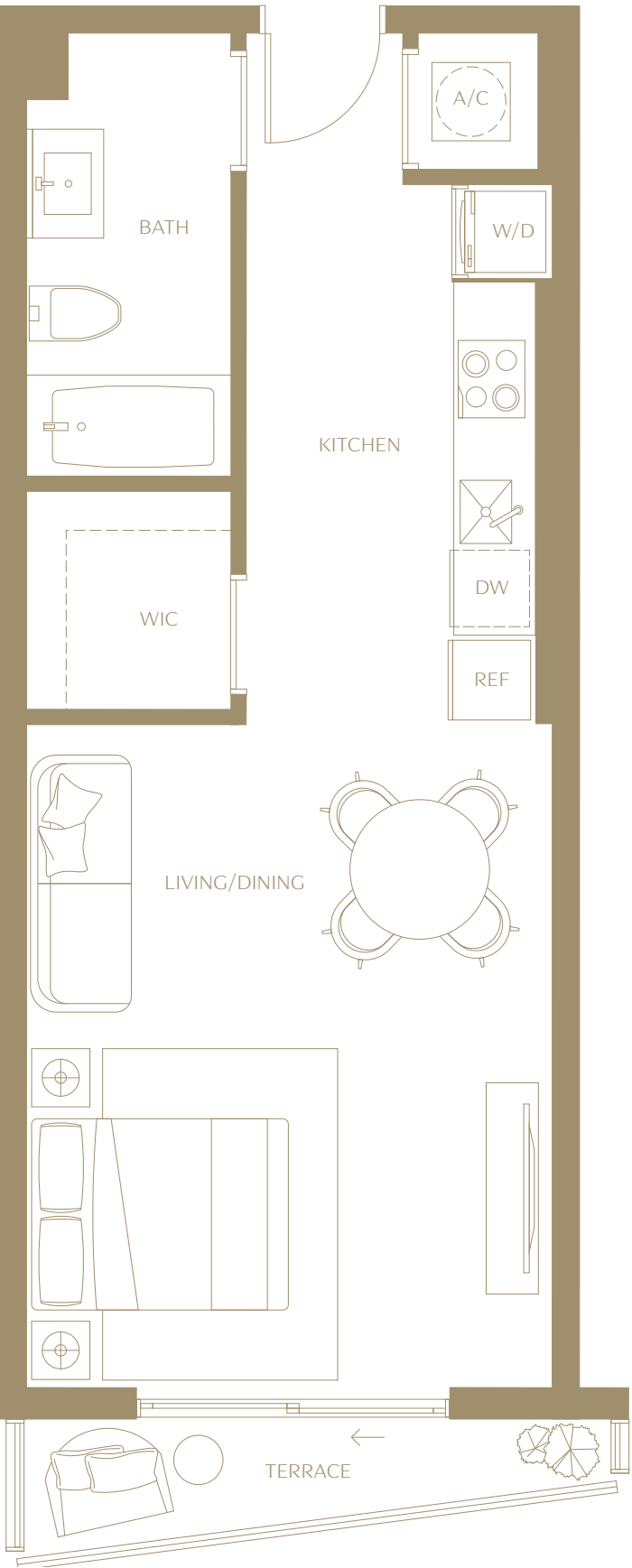
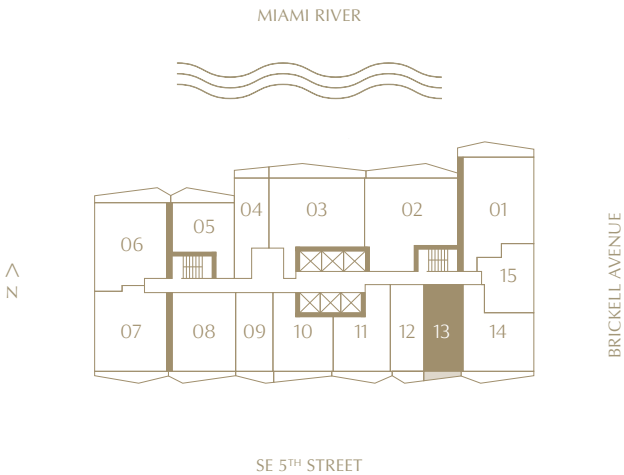
Residence 13

STUDIO | 1 BATHROOM  
LEVELS 15 TO 42  
SOUTH EXPOSURE

INTERIOR  
539 SQ. FT. | 50.07 SQM

TERRACE  
45 SQ. FT. | 4.18 SQM

TOTAL  
584 SQ. FT. | 54.26 SQM



⚠ The dimensions stated for this floor plan are approximate because there are various recognized methods for calculating the square footage of a unit. The square footage stated here is calculated from the exterior boundaries of the exterior walls to the centerline of interior demising walls without deductions for cutouts, curves, or architectural features. This method typically results in quoted dimensions greater than the dimensions that would be determined by using other accepted methods. The definition of "Unit" and the calculation method to be relied upon is set forth by 444 BRICKELL TWO, LLC (the "Developer") in Developer's prospectus which method may result in a square footage calculation less than the result of the calculation method used here. VICEROY BRANDS, LLC owns the mark and name Viceroy®. The Developer is permitted to use the name and logo of The Related Group® and Viceroy® pursuant to license agreements which are valid unless terminated or expired; neither The Related Group nor Viceroy Brands, LLC are the Developer. Consult the Developer's prospectus to learn what is included with Unit purchase and to understand Unit dimensions. 2024 © 444 BRICKELL TWO, LLC with all rights reserved.



# VICEROY BRICKELL

## THE RESIDENCES

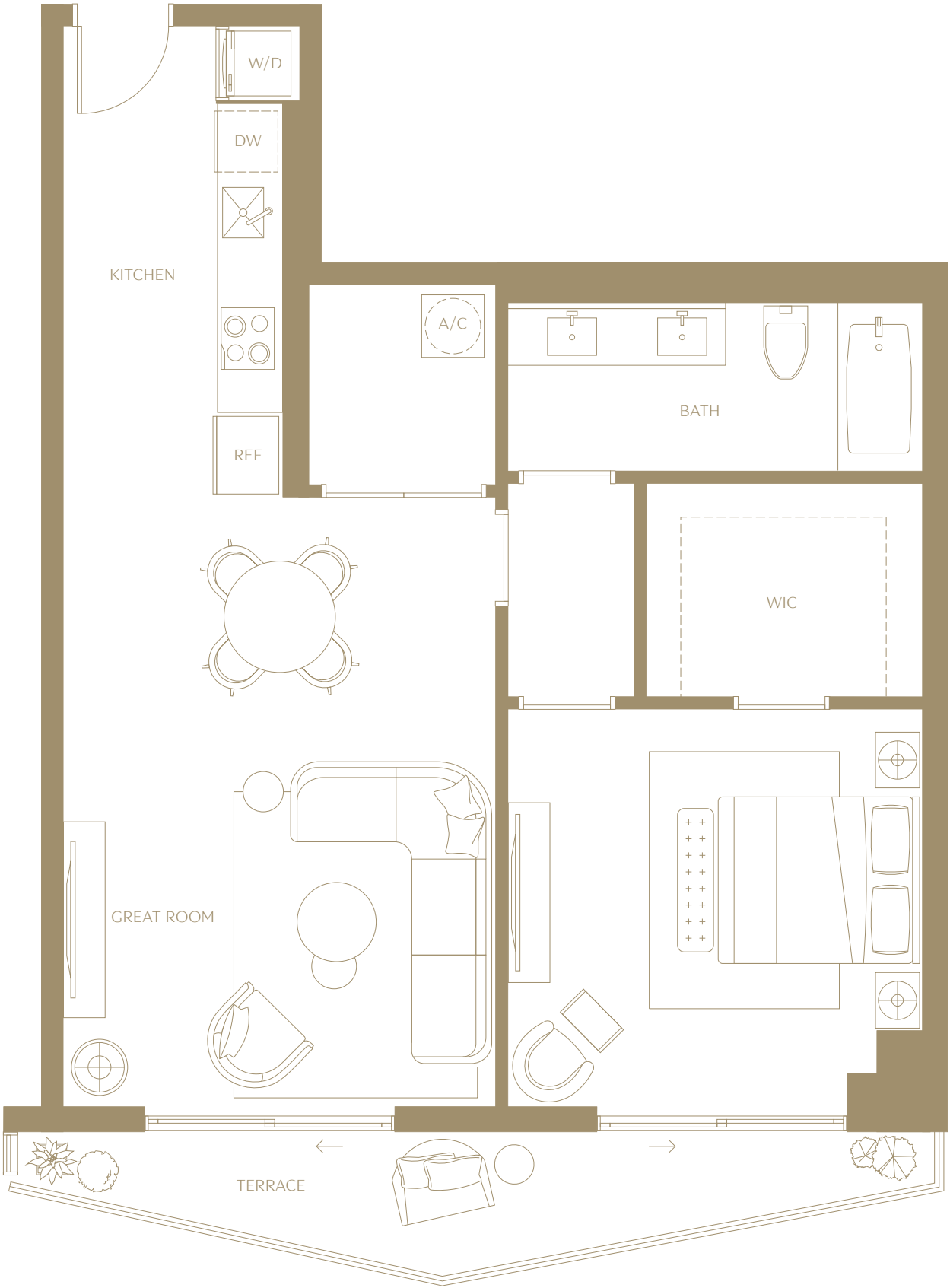
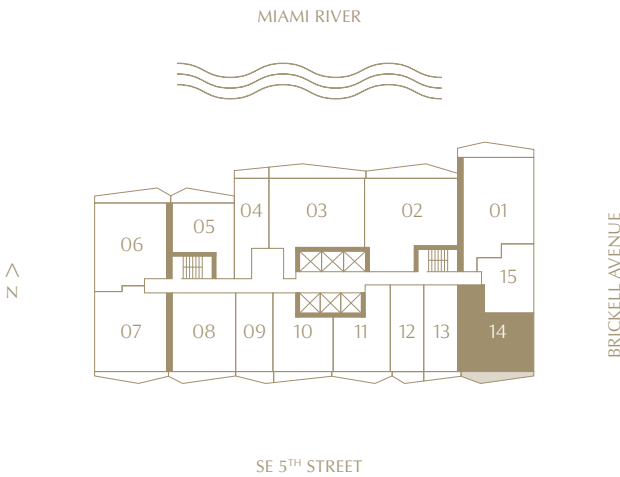
### Residence 14

1 BEDROOM | 1 BATHROOM  
LEVELS 15 TO 42  
SOUTHEAST EXPOSURE

INTERIOR  
833 SQ. FT. | 77.39 SQM

TERRACE  
102 SQ. FT. | 9.48 SQM

TOTAL  
935 SQ. FT. | 86.86 SQM





# VICEROY BRICKELL

## THE RESIDENCES

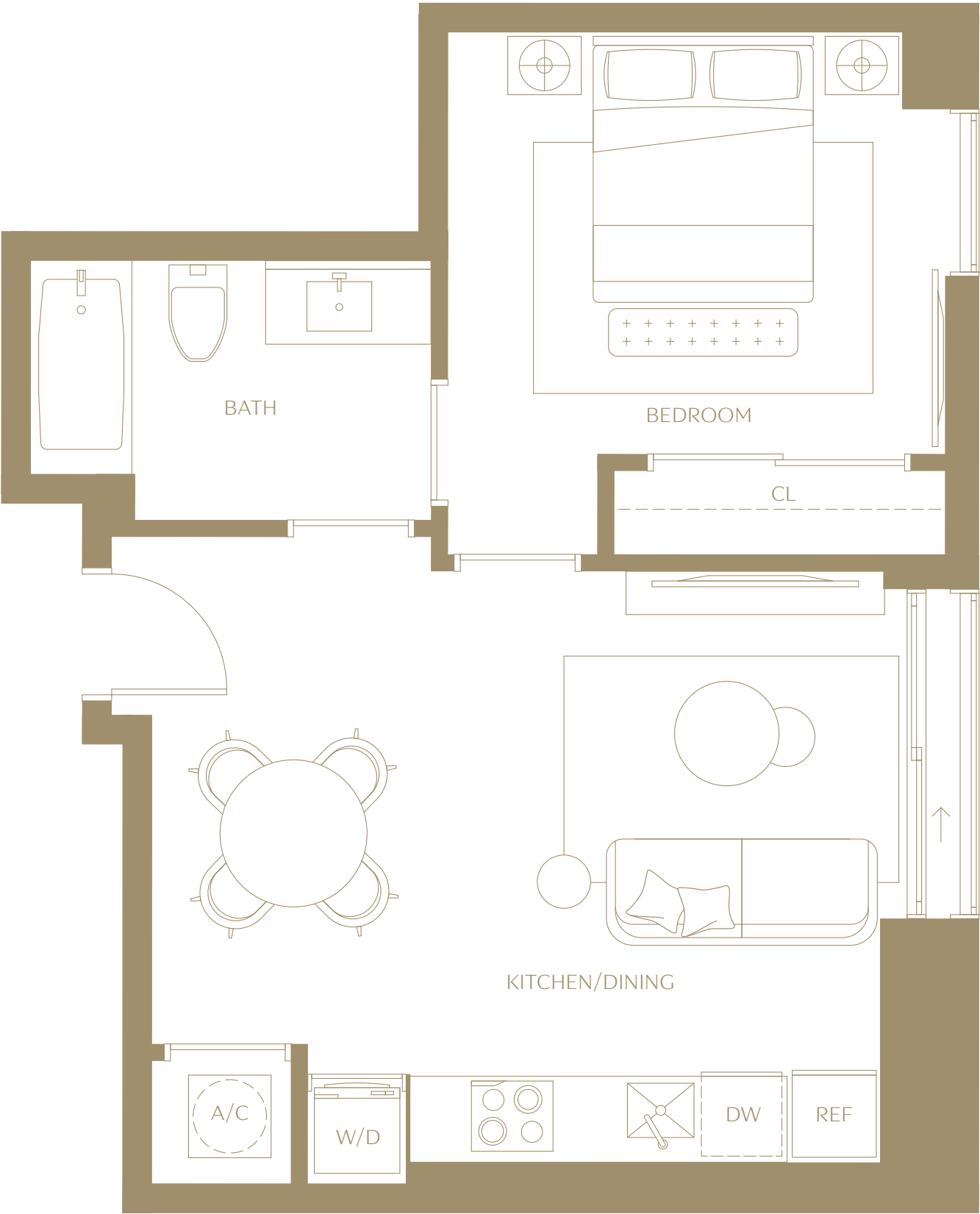
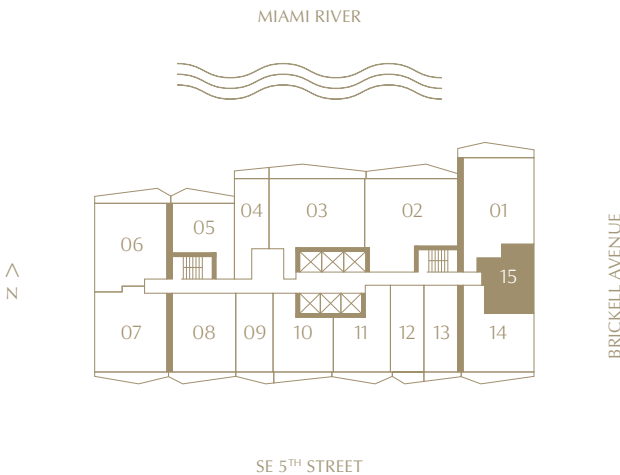
### Residence 15

1 BEDROOM | 1 BATHROOM  
LEVELS 15 TO 42  
EAST EXPOSURE

INTERIOR  
551 SQ. FT. | 51.19 SQM

TERRACE  
10 SQ. FT. | 0.92 SQM

TOTAL  
561 SQ. FT. | 52.11 SQM





# EAST VIEWS





# NORTH EAST VIEWS





# NORTH VIEWS





# NORTH WEST VIEWS





# SOUTH WEST VIEWS





# SOUTH VIEWS





# SOUTH EAST VIEWS





