



*The*  
**BERKELEY**  
*palm beach*

*A Collection of Luxury Waterfront  
Homes for Modern Living*

---

## *On A Clear Day, You Can See Forever*

---

At The Berkeley, residents enjoy a modern lifestyle combining urban sophistication with walkability to world-class arts, entertainment, shopping, and dining. This luxury waterfront condominium offers effortless access in and out of downtown West Palm Beach to enjoy the city's best.





---

## Unmatched *Amenities & Lifestyle*

---

Discover unparalleled luxury and convenience with concierge services and valet parking, a library, a board room & co-working spaces, and a spa. Stay fit at our state-of-the-art fitness center, and enjoy a lounge, kids center, and teen room. Outdoors, explore a family swimming pool, cabanas, game lawn, yoga lawn, bocce court, sport court, and dog run.

Ascend to our rooftop oasis with a sky lounge, bar, chef's kitchen, private dining room, and outdoor dining lounge, all with panoramic views of West Palm Beach's skyline. Experience The Berkeley's extensive amenities, designed for modern living.

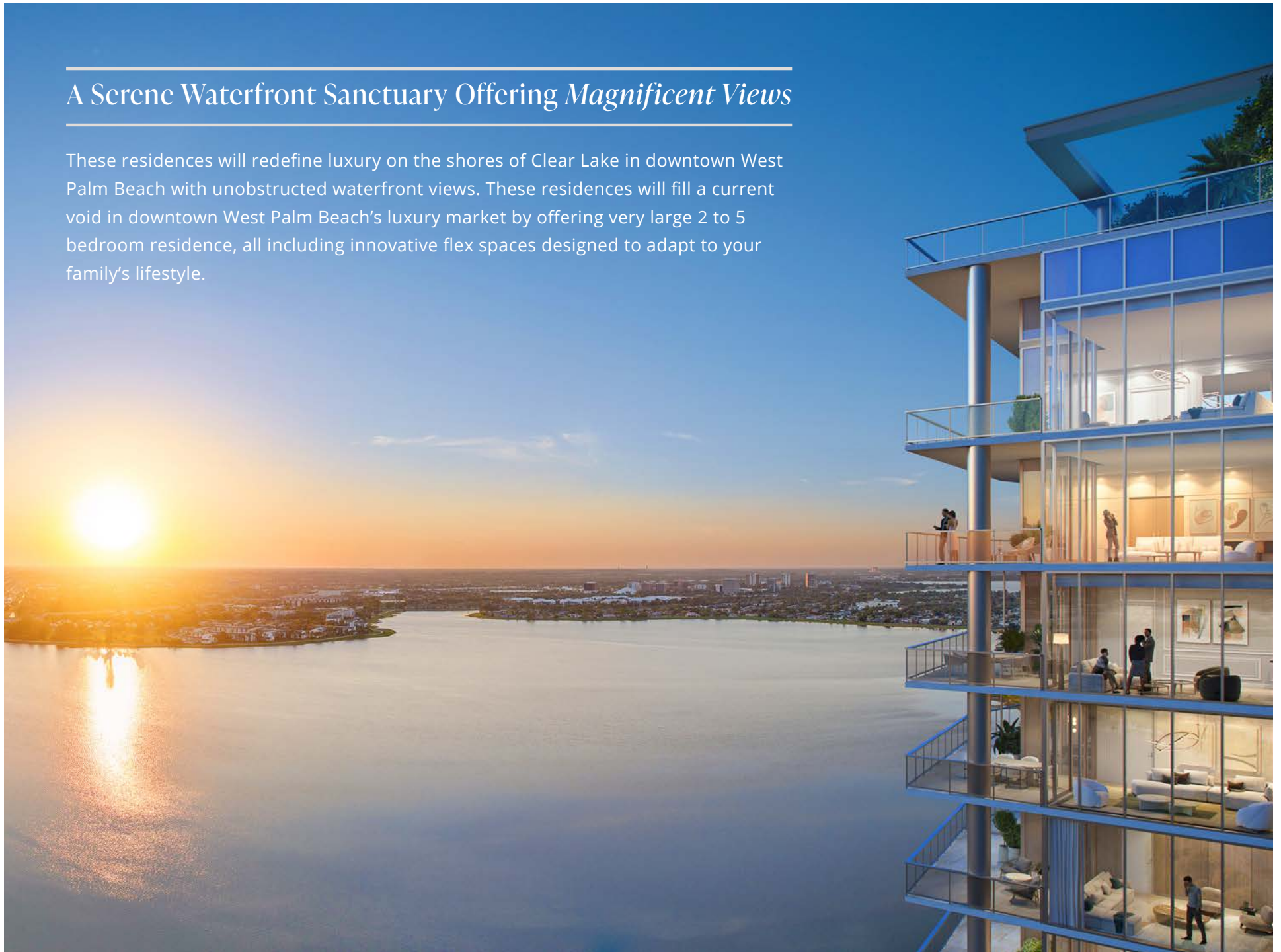


---

## A Serene Waterfront Sanctuary Offering *Magnificent Views*

---

These residences will redefine luxury on the shores of Clear Lake in downtown West Palm Beach with unobstructed waterfront views. These residences will fill a current void in downtown West Palm Beach's luxury market by offering very large 2 to 5 bedroom residence, all including innovative flex spaces designed to adapt to your family's lifestyle.



---

Not All Views Are *Created Equal.*

---





---

Direct Water Views From *Every Residence*.

---





---

## The Berkeley Is A Testament To *Architectural Innovation*

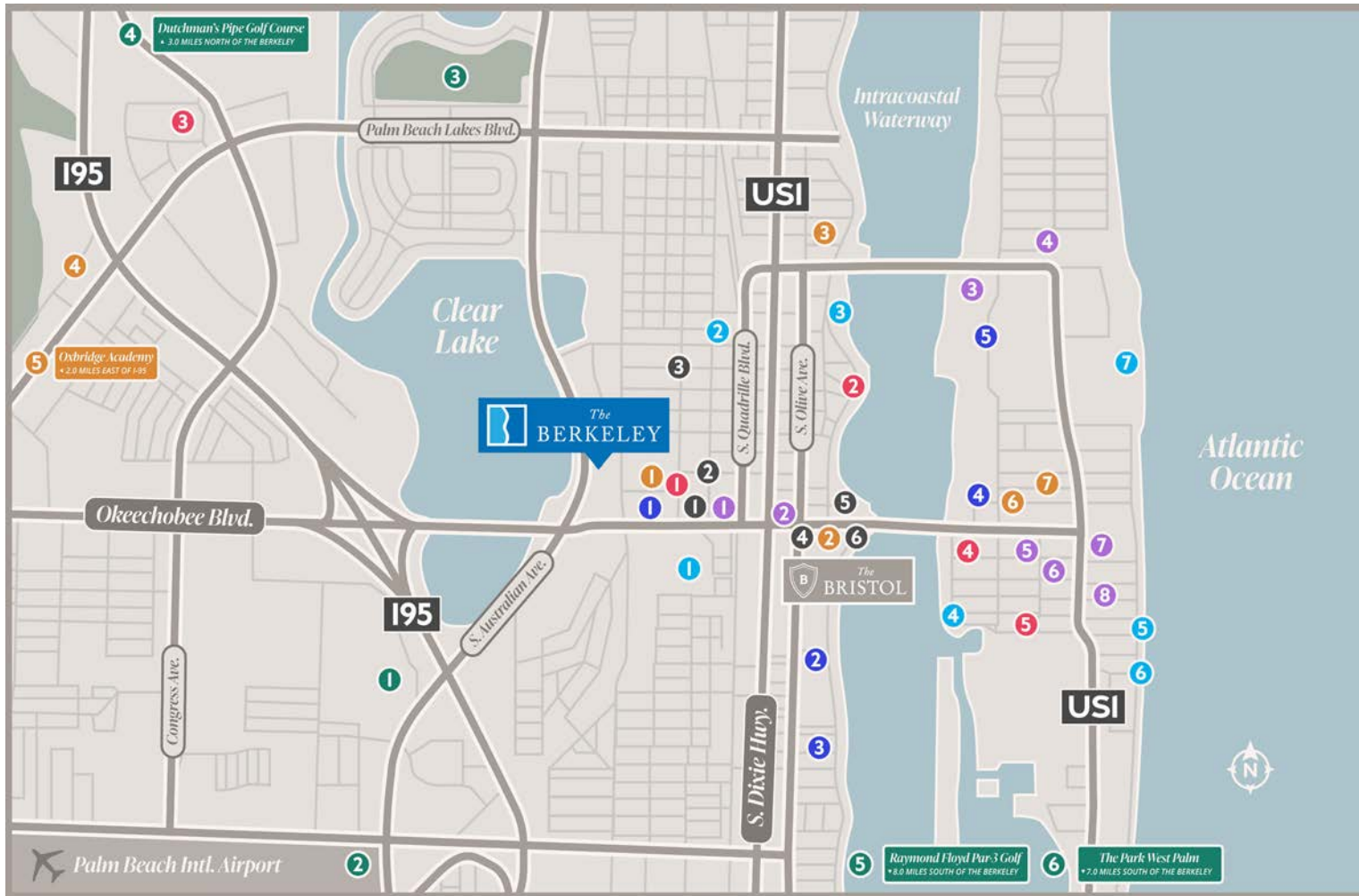
---

Every detail, from the flowing floor plans to the panoramic views, has been meticulously crafted to enhance the experience of living in this exceptional waterfront setting and the interior design is no different. With 9'-10' ceilings, floor-to-ceiling glass, and natural stone floors and countertops, The Berkeley blurs the boundary between home and nature, seamlessly integrating indoor and outdoor living.









## Dining

1. RH Rooftop
2. Estiatorio Milos
3. Palm Beach Grill
4. Trevini Ristorante
5. Cafe Boulud
6. Bucaan
7. Cafe L'Europe
8. BrickTop's

## Schools

1. Dreyfoos School of the Arts
2. Palm Beach Atlantic University
3. Rosarian Academy
4. Renaissance Charter School
5. Oxbridge Academy
6. Palm Beach Public Elementary School
7. Palm Beach Day Academy

## Points of Interest

1. PBC Convention Center
2. Brightline Station
3. Palm Harbor Marina
4. Town of Palm Beach Marina
5. Worth Ave Clock Tower
6. Municipal Beach
7. The Breakers Palm Beach

## Cultural Institutions

1. Kravis Center
2. Norton Museum
3. Ann Norton Sculpture Garden
4. The Society of the Four Arts
5. Flagler Museum

## Shopping

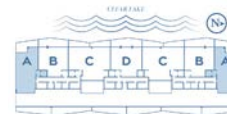
1. City Place
2. Green Market
3. Tanger Outlets
4. The Royal Poinciana Plaza
5. Worth Avenue

## Recreation

1. Palm Beach Ice Works
2. Drive Shack
3. Gaines Park
4. Dutchman's Pipe Golf Course
5. Raymond Floyd Par-3 Golf
6. The Park West Palm Beach

## Offices

1. City Place Tower
2. East & West Towers
3. 360 Rosemary
4. Esperante
5. Phillips Point
6. One Flagler



AVAILABLE ON FLOORS  
2-6



# Residence A

## EXCLUSIVE FEATURES

2 Bedroom + Flex Room

2.5 Bathrooms

1,874 A/C SF

377 Terrace SF

2,251 Total SF

- West & North/South Exposure
- Large Dine-In Terrace
- Unobstructed View Over Clear Lake
- Flex Room
- Vestibule with Private Elevator
- Premium Fixtures and Finishes
- Available on Floors 2-6



# Residence B

## EXCLUSIVE FEATURES

2 Bedroom + Flex Room

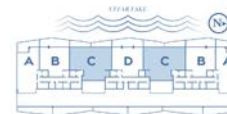
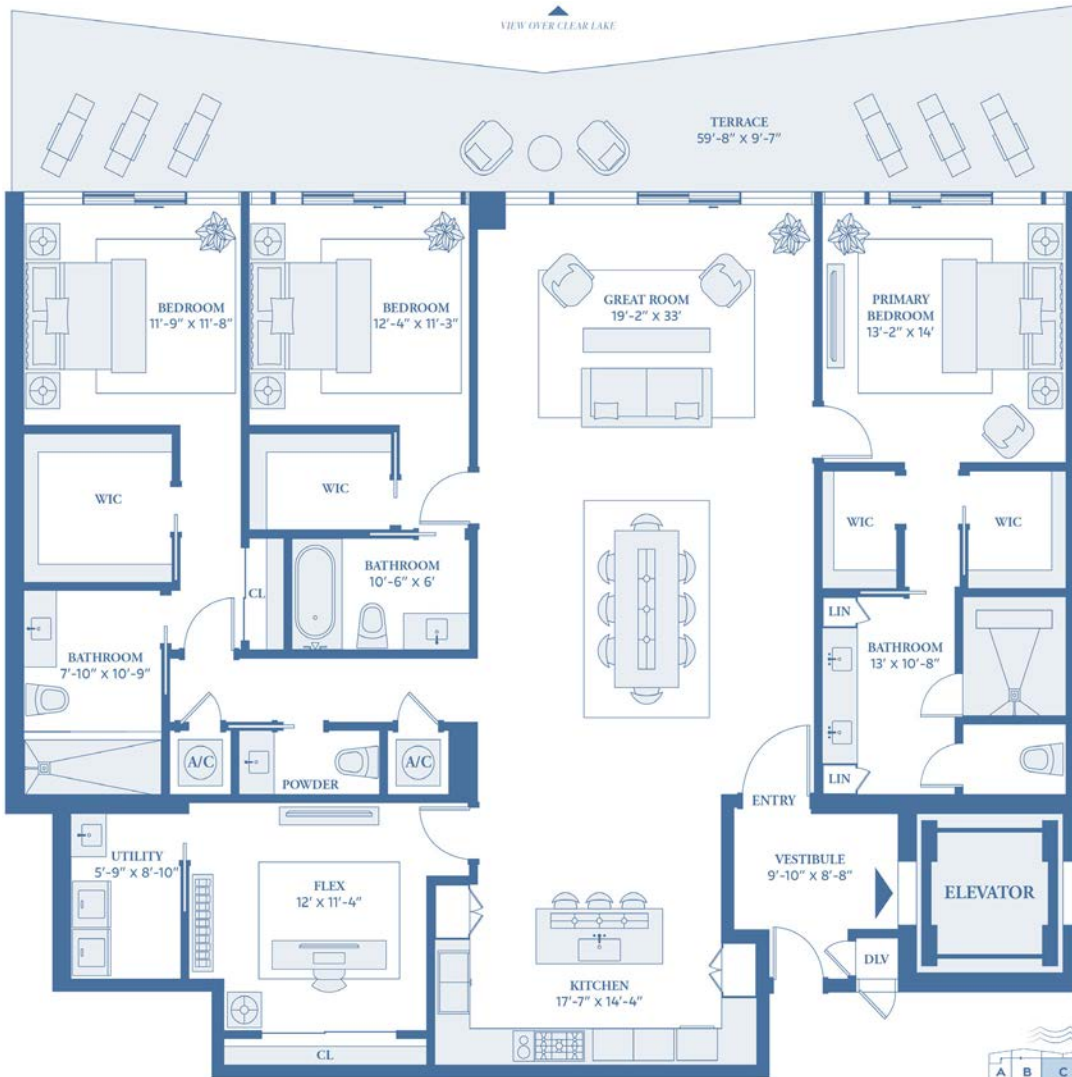
2.5 Bathrooms

1,699 A/C SF

361 Terrace SF

2,061 Total SF

- West Exposure
- Large Dine-In Terrace
- Unobstructed View over Clear Lake
- Flex Room
- Vestibule with Private Elevator
- Premium Fixtures and Finishes
- Available on Floors 2-24



AVAILABLE ON FLOORS  
2-6



# Residence C

## EXCLUSIVE FEATURES

3 Bedroom + Flex Room

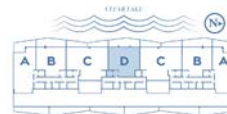
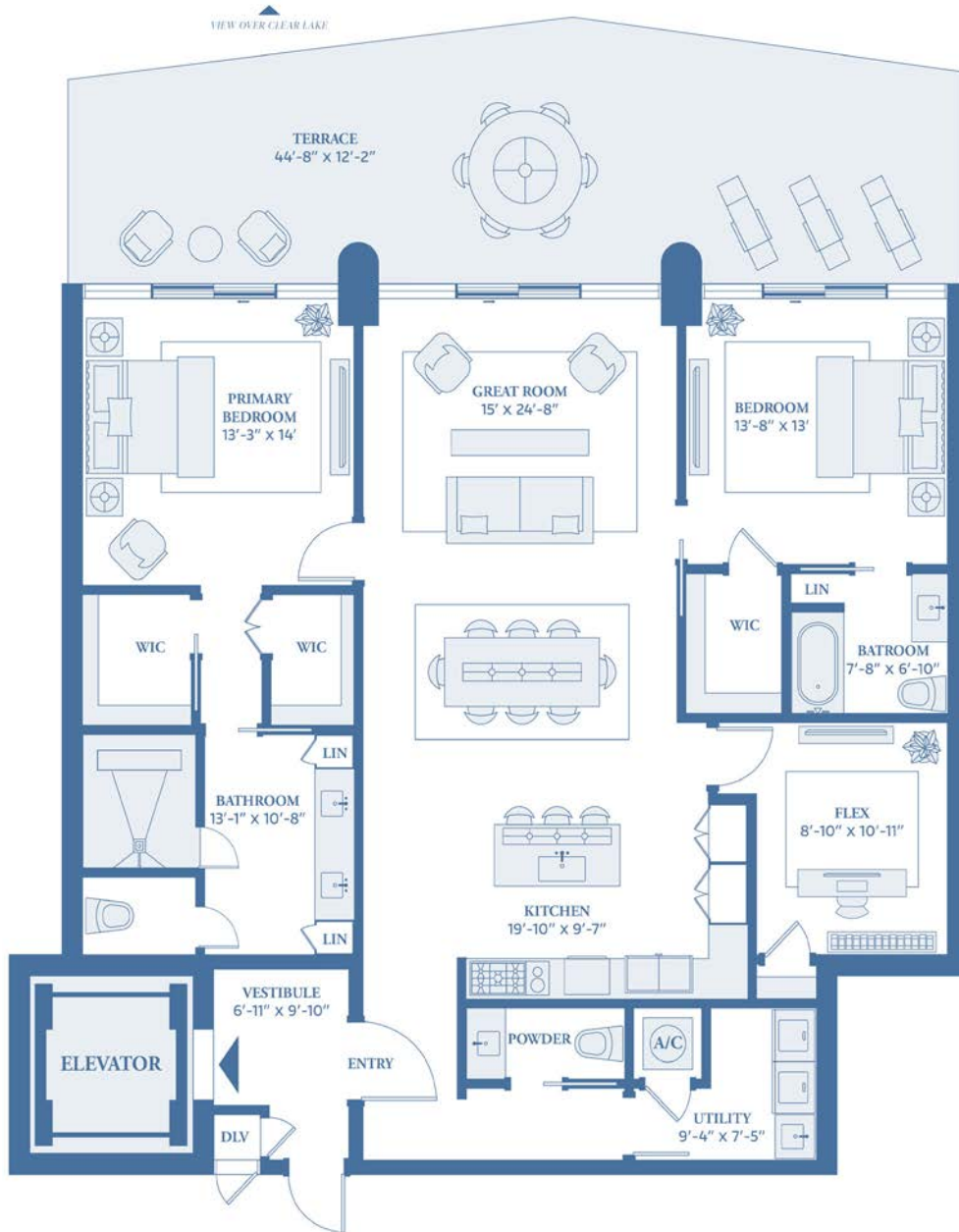
3.5 Bathrooms

2,571 A/C SF

389 Terrace SF

2,960 Total SF

- West Exposure
- Large Dine-In Terrace
- Unobstructed View over Clear Lake
- Flex Room
- Vestibule with Private Elevator
- Premium Fixtures and Finishes
- Available on Floors 2-6



AVAILABLE ON FLOORS  
2-26



# Residence D

## EXCLUSIVE FEATURES

2 Bedroom + Flex Room

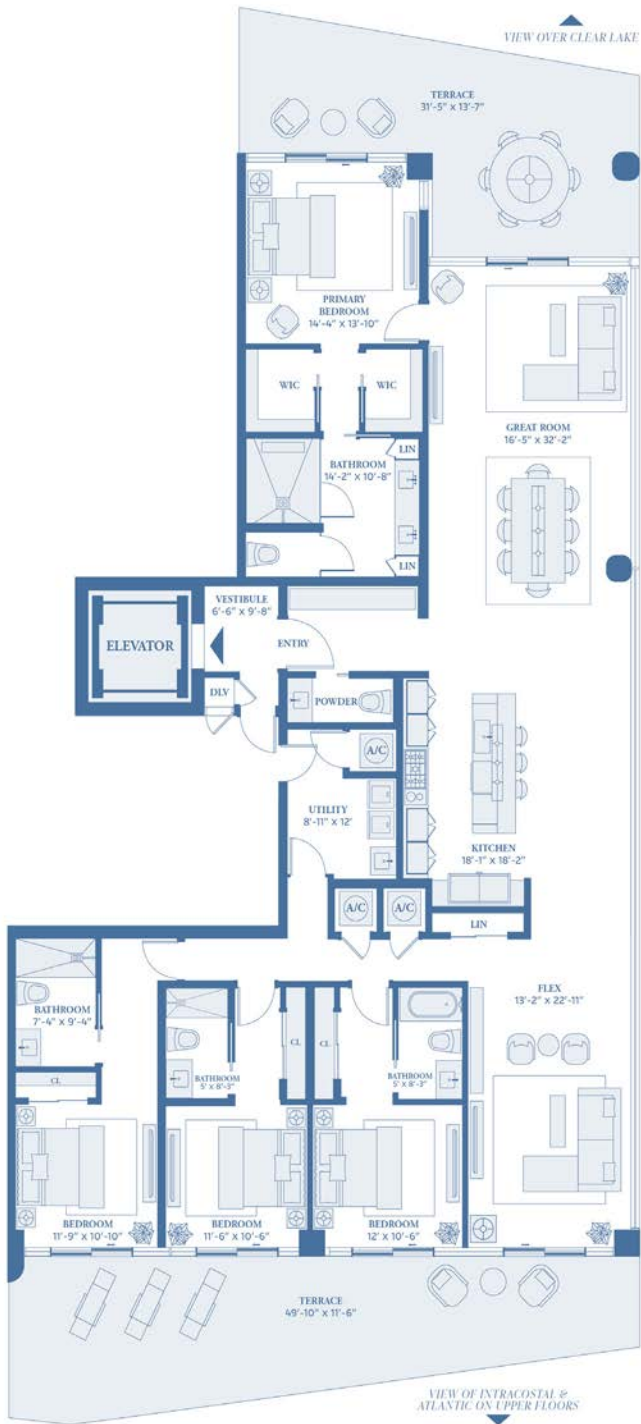
2.5 Bathrooms

1,780 A/C SF

370 Terrace SF

2,150 Total SF

- West Exposure
- Large Dine-In Terrace
- Unobstructed View over Clear Lake
- Flex Room
- Vestibule with Private Elevator
- Premium Fixtures and Finishes
- Available on Floors 2-26



# Residence E

## EXCLUSIVE FEATURES

4 Bedroom + Flex Room

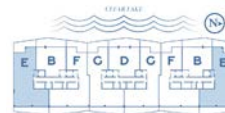
4.5 Bathrooms

2,943 A/C SF

765 Terrace SF

3,708 Total SF

- East, West, & North/South Exposure
- Flow-Through Residence
- Large Dine-In Terrace
- Unobstructed View over Clear Lake
- Expansive Flex Space with Terrace Access
- Vestibule with Private Elevator
- Premium Fixtures and Finishes
- Available on Floors 8-24



AVAILABLE ON FLOORS  
8-24





# Residence F

## EXCLUSIVE FEATURES

3 Bedroom + Flex Room

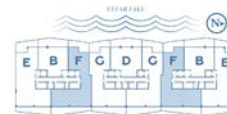
3.5 Bathrooms

2,670 A/C SF

774 Terrace SF

3,444 Total SF

- East & West Exposure
- Flow-Through Residence
- Large Dine-In Terrace
- Unobstructed View over Clear Lake
- Expansive Flex Space with Terrace Access
- Vestibule with Private Elevator
- Premium Fixtures and Finishes
- Available on Floors 8-26



AVAILABLE ON FLOORS  
8-26





# Residence G

## EXCLUSIVE FEATURES

3 Bedroom + Flex Room

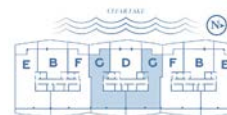
3.5 Bathrooms

2,583 A/C SF

679 Terrace SF

3,262 Total SF

- East & West Exposure
- Flow-Through Residence
- Large Dine-In Terrace
- Unobstructed View over Clear Lake
- Expansive Flex Space with Terrace Access
- Vestibule with Private Elevator
- Premium Fixtures and Finishes
- Available on Floors 8-26



AVAILABLE ON FLOORS  
8-26





# Residence PH

## EXCLUSIVE FEATURES

5 Bedroom + Flex Room

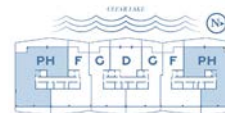
6.5 Bathrooms

4,742 A/C SF

1,092 Terrace SF

5,834 Total SF

- East, West, & North/South Exposure
- Flow-Through Residence
- Large Dine-In Terrace
- Unobstructed View over Clear Lake
- Flex Room
- Vestibule with Private Elevator
- Premium Fixtures and Finishes
- Available on Floors 25-26



AVAILABLE ON FLOORS  
25-26





*The*  
**BERKELEY**

**PROJECT TEAM**

- **DEVELOPER:** AL ADELSON
- **ARCHITECT:** BERNARDO FORT-BRESCIA OF ARQUITECTONICA
- **DESIGN & CONSTRUCTION SENIOR CONSULTANT:** TIM DESMOND
- **DEVELOPMENT DIRECTOR:** BOB ERNST
- **SALES & MARKETING DIRECTOR:** JOE CONWELL
- **INTERIOR DESIGN:** ARQUITECTONICA INTERIORS
- **LANDSCAPE ARCHITECTURE:** EDSA

**AUSTRALIAN PROPERTIES GROUP**

A JOINT VENTURE OF AL ADELSON,  
VISIONARY DEVELOPER OF THE BRISTOL,  
AND SYMPATICO REAL ESTATE

**ARQUITECTONICA**

