

# 1625C 21<sup>ST</sup> AVE, SEATTLE 98122



3 BEDS



1.75 BATHS



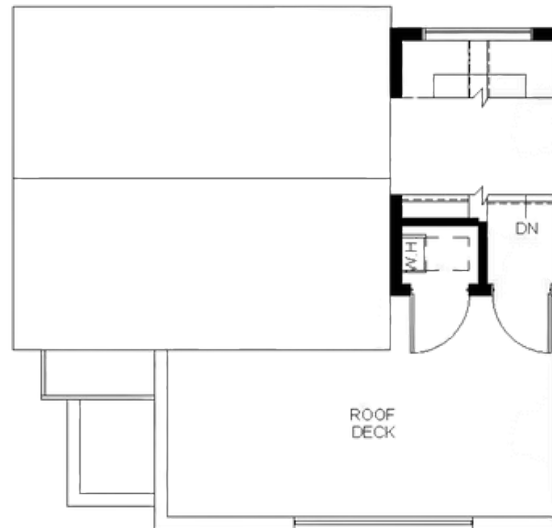
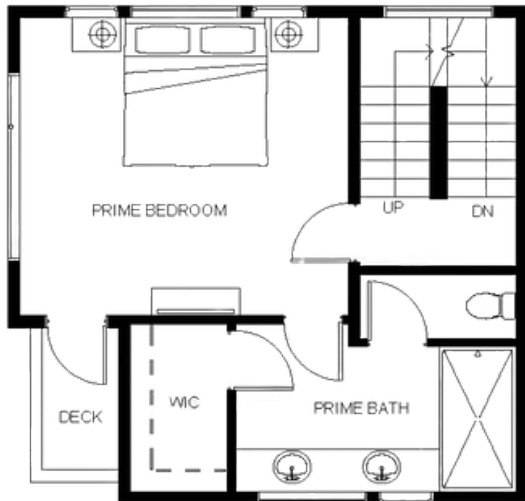
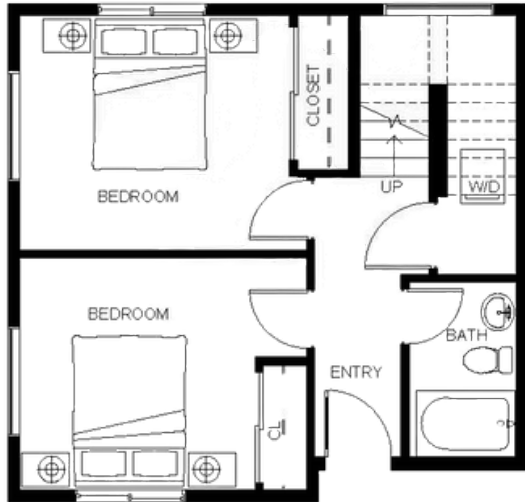
1,625 SQFT



Designated Parking



Scan To View All  
Community Plans



**VWPRE.COM | (206) 222-7723**

Floor plans are provided for illustrative and general informational purposes only. Buyer to verify all information to their own satisfaction.

# 1627A 21<sup>ST</sup> AVE, SEATTLE 98122



3 BEDS



1.75 BATHS



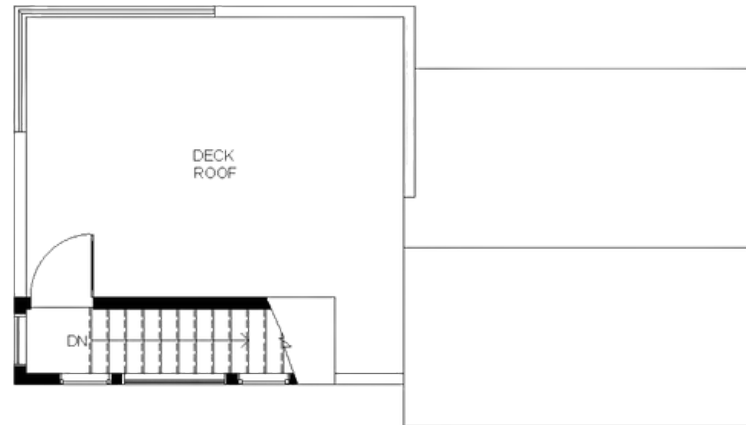
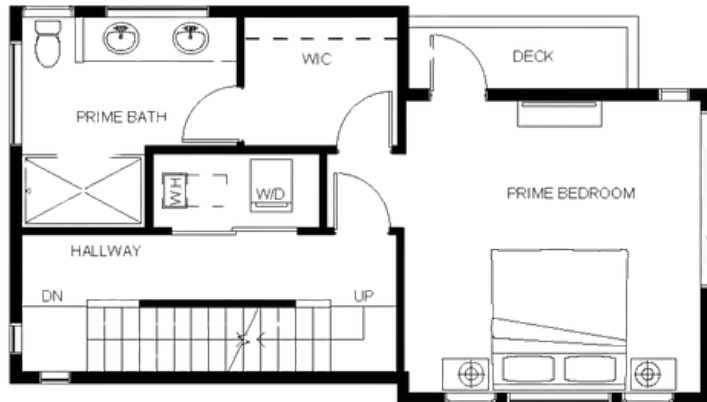
1,786 SQFT



Designated Parking



Scan To View All  
Community Plans



**VWPRE.COM | (206) 222-7723**

# 1627B 21<sup>ST</sup> AVE, SEATTLE 98122



3 BEDS



1.75 BATHS



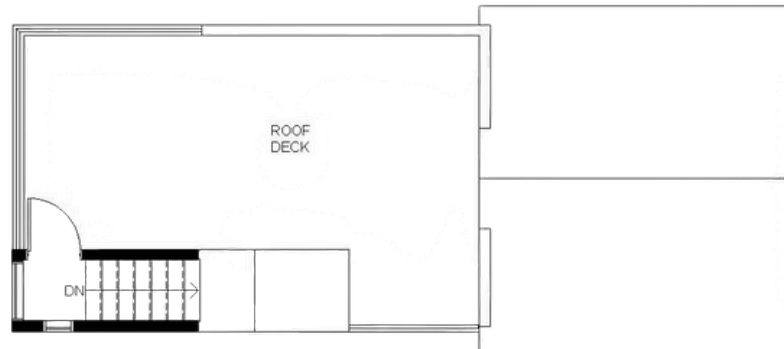
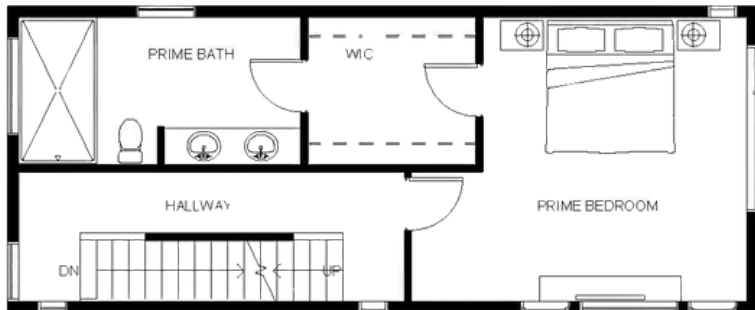
1,767 SQFT



Designated Parking



Scan To View All  
Community Plans



**VWPRE.COM | (206) 222-7723**

Floor plans are provided for illustrative and general informational purposes only. Buyer to verify all information to their own satisfaction.

# 1625A 21<sup>ST</sup> AVE, SEATTLE 98122



3 BEDS



1.75 BATHS



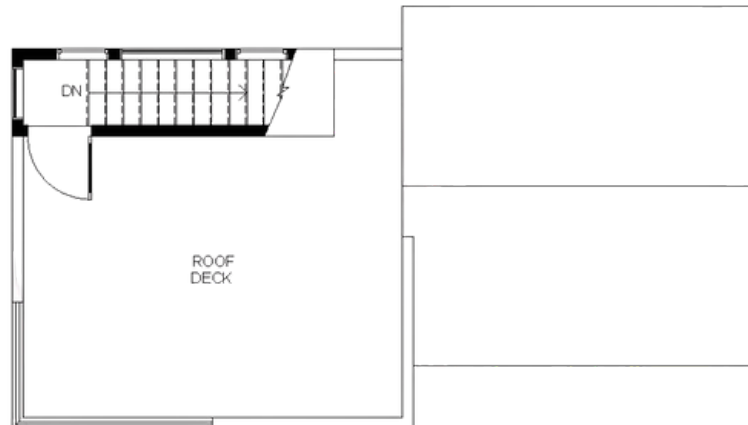
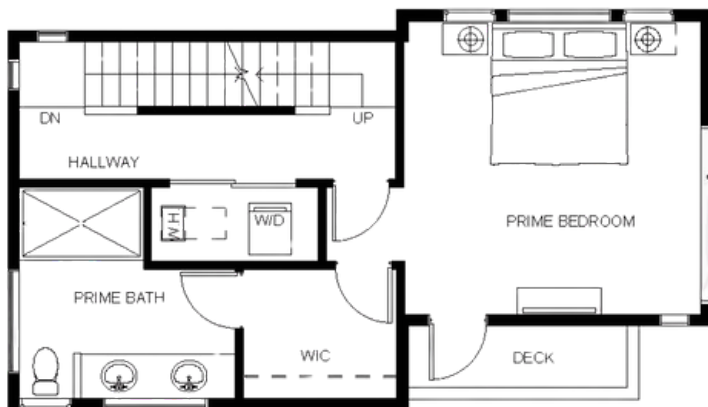
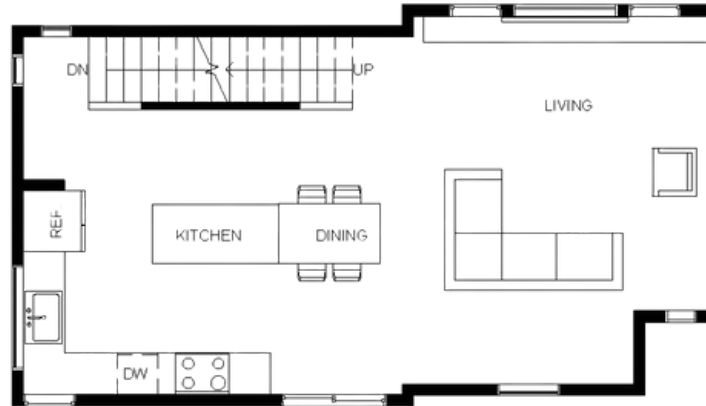
1,786 SQFT



Designated Parking



Scan To View All  
Community Plans



**VWPRE.COM | (206) 222-7723**

Floor plans are provided for illustrative and general informational purposes only. Buyer to verify all information to their own satisfaction.

# 1625B 21<sup>ST</sup> AVE, SEATTLE 98122



3 BEDS



1.75 BATHS



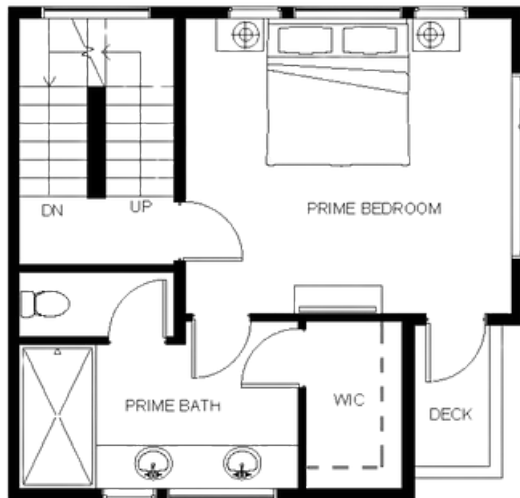
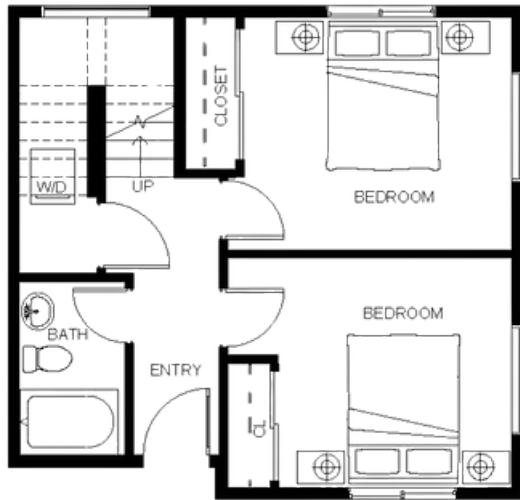
1,625 SQFT



Designated Parking



Scan To View All  
Community Plans



**VWPRE.COM | (206) 222-7723**

Floor plans are provided for illustrative and general informational purposes only. Buyer to verify all information to their own satisfaction.

# CAPITOL PINES SITE MAP

**VWPRE.COM | (206) 222-7723**

