

# THE RESIDENCES

SIX FISHER ISLAND

N 25° 45.8255  W 80° 8.4428

## Life on a Grand Scale

Given their stunning location, The Residences at Six Fisher Island maximize light and space, capture every part of the extraordinary views, and feature exacting details. They are gracious, classic, and modern at the same time.





Private Terrace

ARTIST'S CONCEPTUAL RENDERINGS. SEE DISCLAIMERS PAGE.



## The Residences

Curated by Tara Bernerd & Partners, every element of Six Fisher's interior design embodies the natural world. Traces of tropical greens, soft stones, and organic textures provide serenity and a deep sense of natural beauty, at every turn throughout one's day. Private 15-foot-deep terraces are designed to provide direct views of the Atlantic Ocean and Biscayne Bay from every residence.





Great Room 04C

ARTIST'S CONCEPTUAL RENDERINGS. SEE DISCLAIMERS PAGE.





Family Room 01

ARTIST'S CONCEPTUAL RENDERINGS. SEE DISCLAIMERS PAGE.





Great Room

ARTIST'S CONCEPTUAL RENDERINGS. SEE DISCLAIMERS PAGE.

Flooring Selections



01.



02.



03.

01. LIGHT WOOD 02. DARK WOOD  
03. TRAVERTINE FOR BALCONIES AND OPTIONAL FOR INTERIOR FLOORS





Kitchen Layout A

ARTIST'S CONCEPTUAL RENDERINGS. SEE DISCLAIMERS PAGE.





Kitchen Layout B

ARTIST'S CONCEPTUAL RENDERINGS. SEE DISCLAIMERS PAGE.



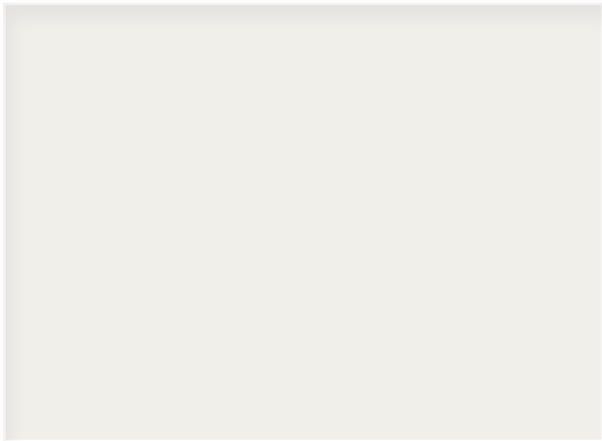
Kitchen Finishes—Scheme A



01.



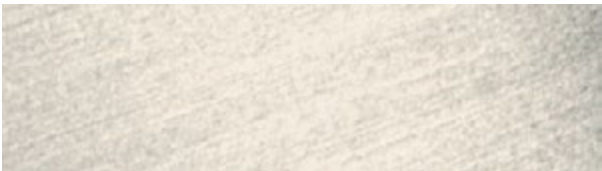
02.



03.



04.



05.

01. WARM WHITE OAK TIMBER FLOORING 02. BRECCIA CAPRAIA COUNTERTOP AND ISLAND STONE  
03. CLEAR GLASS TO HIGH CUPBOARD 04. DETAILS METAL FINISH 05. SANITARYWARE FINISH

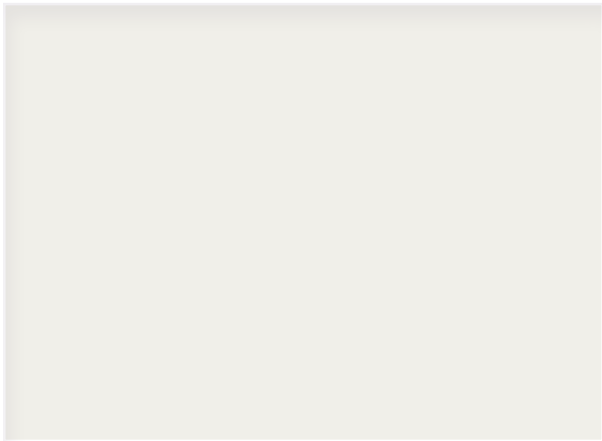
Kitchen Finishes—Scheme B



01.



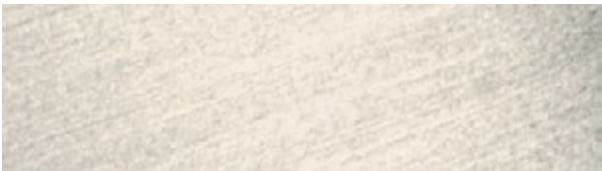
02.



03.



04.



05.

01. SMOKED OAK FLOORING 02. TARAHUMARA COUNTERTOP AND ISLAND STONE  
03. CLEAR GLASS TO HIGH CUPBOARD 04. DETAILS METAL FINISH 05. SANITARYWARE FINISH



Kitchen Furniture, Fixtures & Equipment



MILLWORK DETAIL CONCEPT



SUBZERO  
15" ICE MAKER



SUBZERO  
24" COVE DISHWASHER



SUBZERO  
36" DESIGNER COLUMN  
FREEZER



SUBZERO  
36" DESIGNER COLUMN  
REFRIGERATOR



SUBZERO  
30" WINE STORAGE



WOLF  
30" COFFEE SYSTEM



WOLF  
30" BLACK GLASS  
CONVECTION STEAM OVEN



WOLF  
30" DROP-DOWN DOOR  
MICROWAVE OVEN



48" LOW PROFILE WALL HOOD



WOLF  
48" DUAL FUEL RANGE



DORNBRACHT  
TARA CLASSIC HOT & COLD  
WATER DISPENSER



DORNBRACHT  
TARA ULTRA SINGLE LEVER  
MIXER WITH PULL-DOWN SPRAY



DORNBRACHT  
POT FILLER



KITCHEN SINK



CABINET PULL



DRAWER PULL



CONCEALED EQUIPMENT JOINERY PULL

FINISH



PLATINUM MATTE



## Bathrooms

Bathed in light and with panoramic views, your most private space is bright, yet secluded. Deep soaking tubs, rainfall and steam showers, a Toto Washlet, and a custom sink are surrounded by stone floors, walls, and counters, with exacting finishes throughout. The secondary bathroom offers a rainfall and hand shower, and marble counters. The powder room has quartzite counters. Both are available with the same finishes as the primary bathroom.





Primary Bathroom





Primary Bathroom



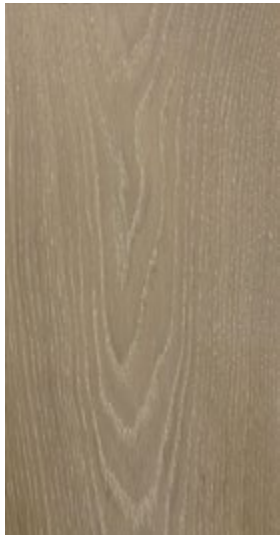
Primary Bathroom Finishes



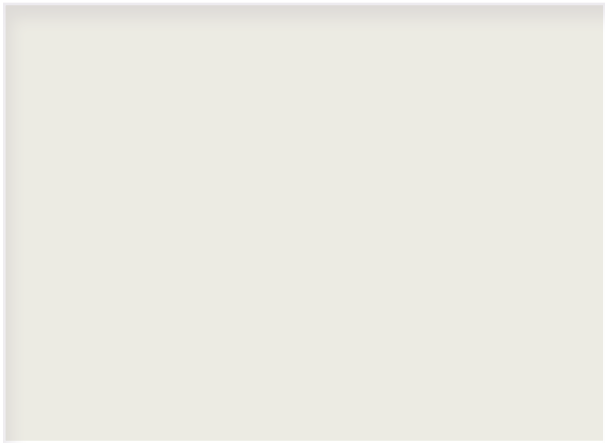
01.



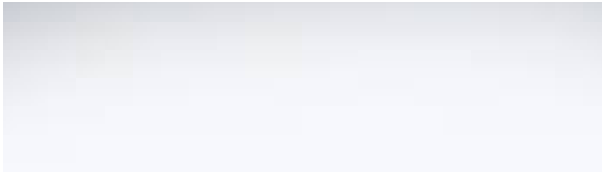
02A.



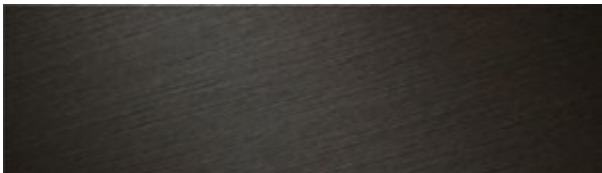
02B.



03.



04.



05.

01. TAJ MAJAL STONE AT FLOOR, WALLS AND VANITY TOP 02A & 02B. TIMBER AT VANITY OPTIONS  
03. SATIN OPAL GLASS AT WC DOOR 04. MIRROR 05. SANITARYWARE FINISH

Primary Bathroom Furniture, Fixtures & Equipment



DORNBRACHT  
TARA DECK MOUNTED FAUCET



DORNBRACHT  
RAIN PANEL



DORNBRACHT  
HAND SHOWER SET



DORNBRACHT  
THERMOSTAT MODULE



DORNBRACHT  
TARA ROBE HOOKS



DORNBRACHT  
TARA TOWEL BAR



TOTO  
WASHLET TOILET



SOAKING BATHTUB



DORNBRACHT  
TARA TOILET ROLL HOLDER



WALL SCONCE

FINISHES



DARK PLATINUM  
MATTE



CONCEPT IMAGE



STEAM SHOWER  
WITH WATER JETS



CUSTOM STONE SINK



Secondary Bathroom Finishes



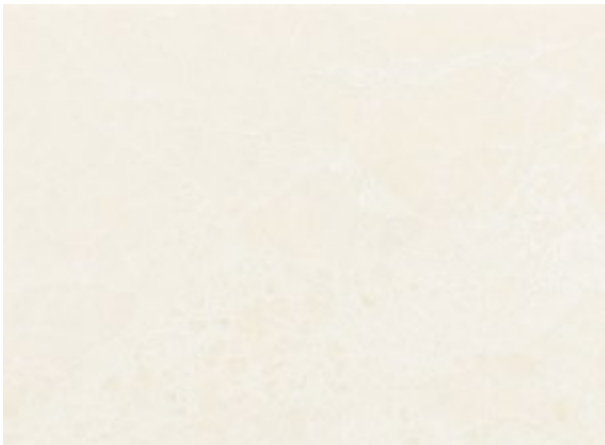
01A.



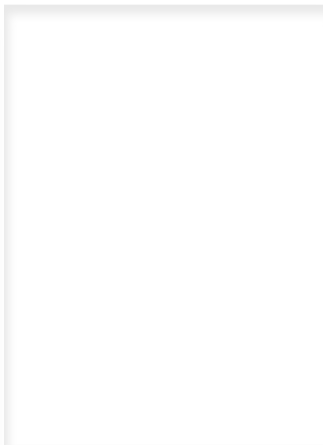
01B.



02.



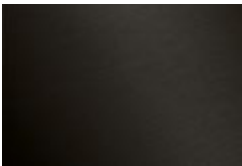
03.



04.



05.



06.

01A & 01B. TIMBER AT VANITY WALL OPTIONS 02. CALCATTA APUANO STONE AT VANITY TOP  
03. CORSICA CREAM STONE AT FLOOR AND WALLS 04. CLEAR GLASS TO SHOWER PARTITION  
05. MIRROR 06. SANITARYWARE FINISH

Secondary Bathroom Furniture, Fixtures & Equipment



DORNBRACHT  
RAIN SHOWER



DORNBRACHT  
TARA DECK MOUNTED FAUCET



DORNBRACHT  
HAND SHOWER SET



DORNBRACHT  
THERMOSTAT MODULE



DORNBRACHT  
TARA ROBE HOOKS



DORNBRACHT  
TARA TOWEL BAR



DORNBRACHT  
TARA TOILET ROLL HOLDER



DURAVIT  
UNDERMOUNT SINK



TOTO  
ONE-PIECE TOILET



WALL SCONCE

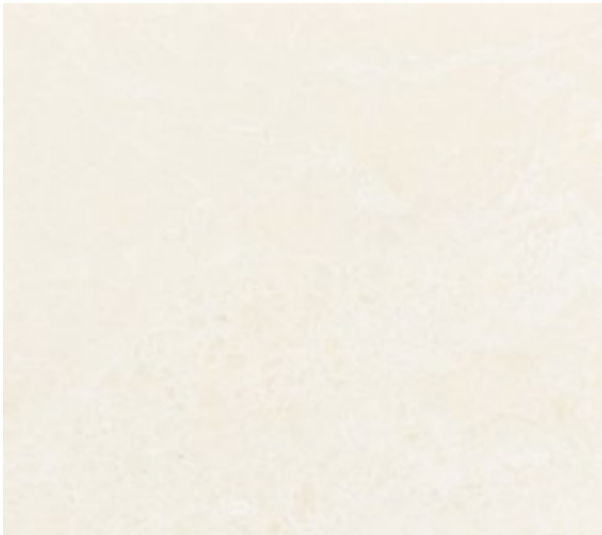
FINISHES



DARK PLATINUM  
MATTE



Powder Room Finishes



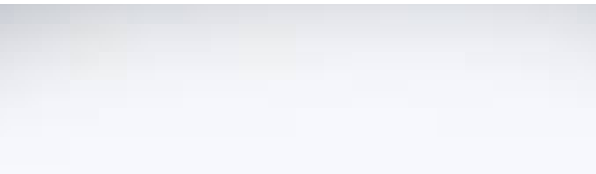
01.



02.



03.



04.



05.

01. CORSICA CREAM STONE FLOOR AND DADO HEIGHT WALL 02. CRISTALLO TROPICALE STONE VANITY  
03. WALL PAINT 04. MIRROR 05. SANITARYWARE FINISH

Powder Room Furniture, Fixtures & Equipment



DORNBRACHT  
TARA FAUCET



DORNBRACHT  
TARA ROBE HOOK



DORNBRACHT  
TARA TOILET ROLL HOLDER



DORNBRACHT  
TARA TOWEL BAR



TOTO  
ONE-PIECE TOILET



WALL LIGHT

FINISHES



DARK PLATINUM  
MATTE



## Primary Suite Wardrobe & Midnight Bar

The primary suites offer more than respite and a perfect night's sleep. They connect to two walk-in, custom-finished wardrobes and a full midnight bar.





Primary Bedroom 04C

ARTIST'S CONCEPTUAL RENDERINGS. SEE DISCLAIMERS PAGE.





Primary Bedroom 02

ARTIST'S CONCEPTUAL RENDERINGS. SEE DISCLAIMERS PAGE.



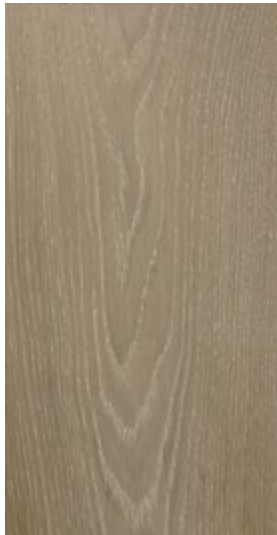
Wardrobe Finishes



01.



02A.



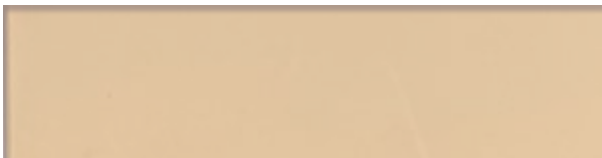
02B.



03.



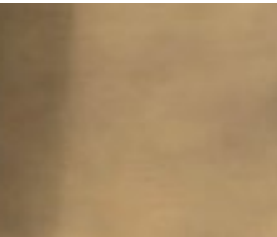
04.



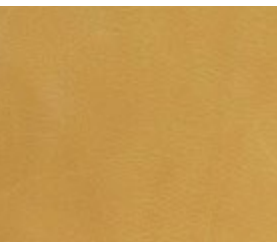
05.



06.



07.



08.

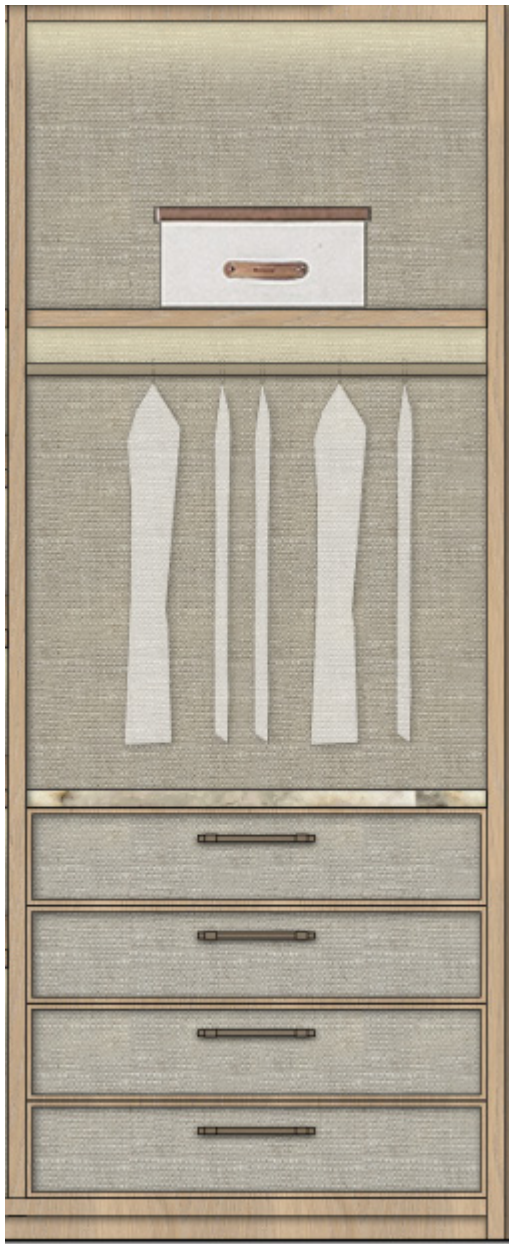
01. PAINT AT WALL AND CEILING 02A & 02B. TIMBER MILLWORK OPTIONS  
03. LINEAR TEXTURED GLASS TO ENTRY DOOR 04. LINEN PANELLING 05. TINTED DOOR GLASS  
06. DOLCE VITA STONE ACCENTS 07. METAL DETAILS 08. LEATHER DETAILS



Primary Wardrobe



Primary Wardrobe—Modular Types



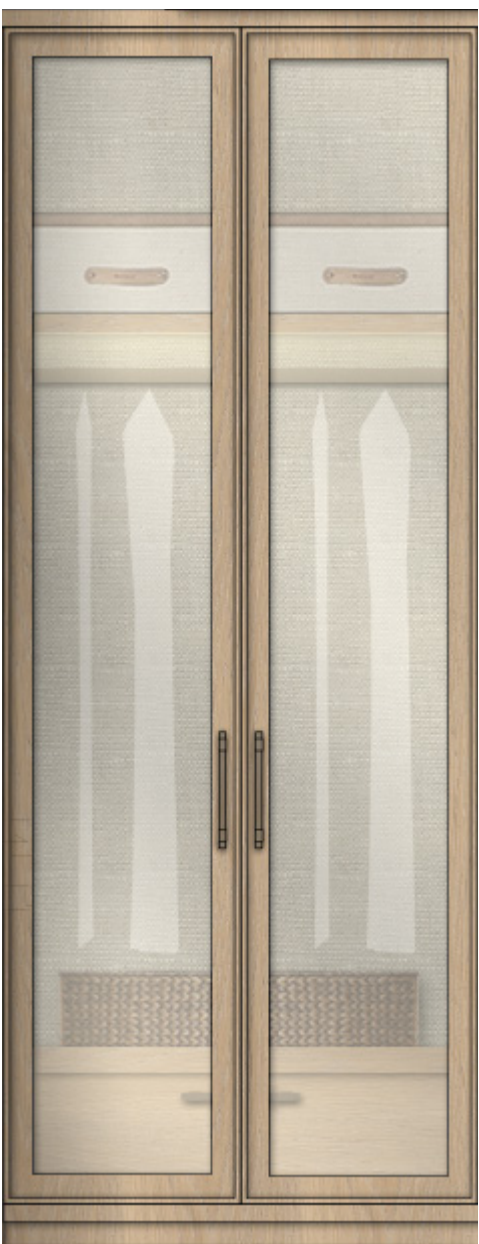
**SHORT HANG & DRESSER**  
TOP STORAGE  
SHORT HANGING  
DRAWERS X 4



**VANITY**  
TOP STORAGE  
DRY VANITY WITH  
JEWELLERY DRAWERS



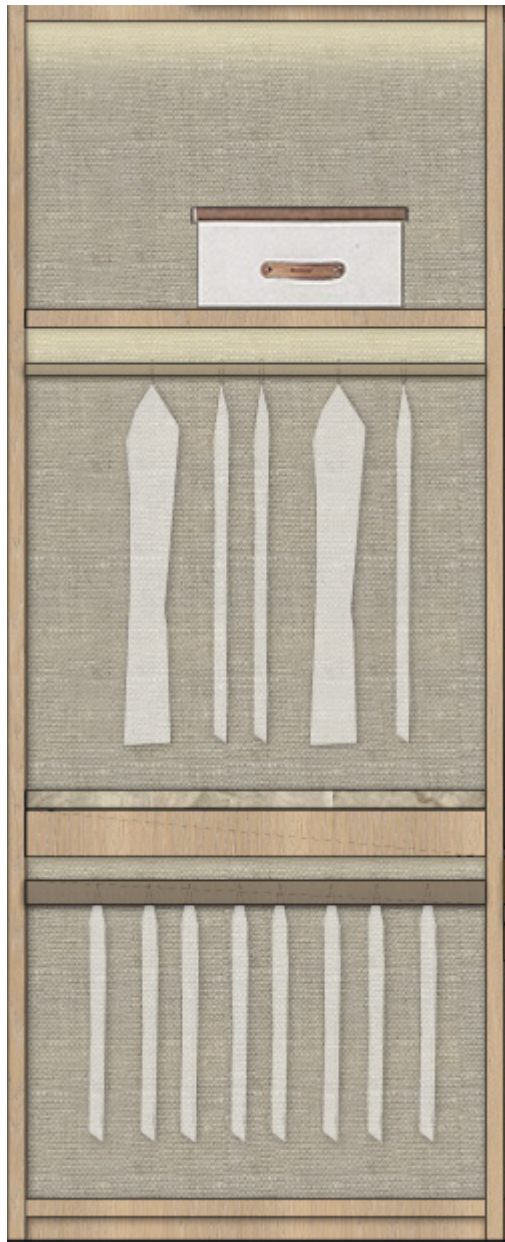
**ENCLOSED DISPLAY SHELVES**  
ENCLOSED DOOR  
TOP STORAGE  
HAND BAG DISPLAY  
ACCESSORIES DRAWERS  
BOTTOM DRAWER



**ENCLOSED LONG HANG**  
ENCLOSED DOOR  
TOP STORAGE  
LONG HANGING  
BOTTOM DRAWER



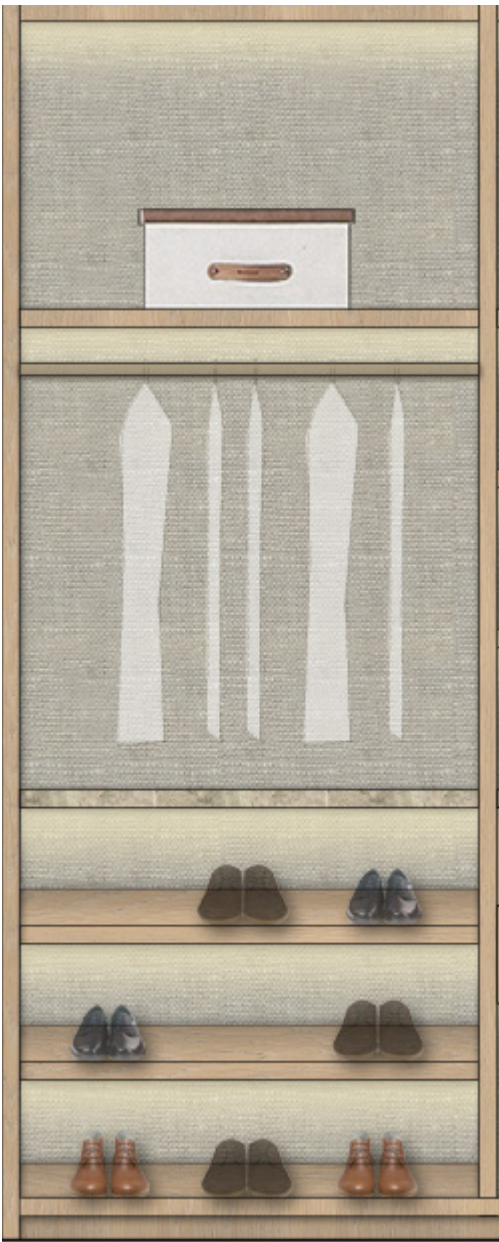
Primary Wardrobe—Modular Types



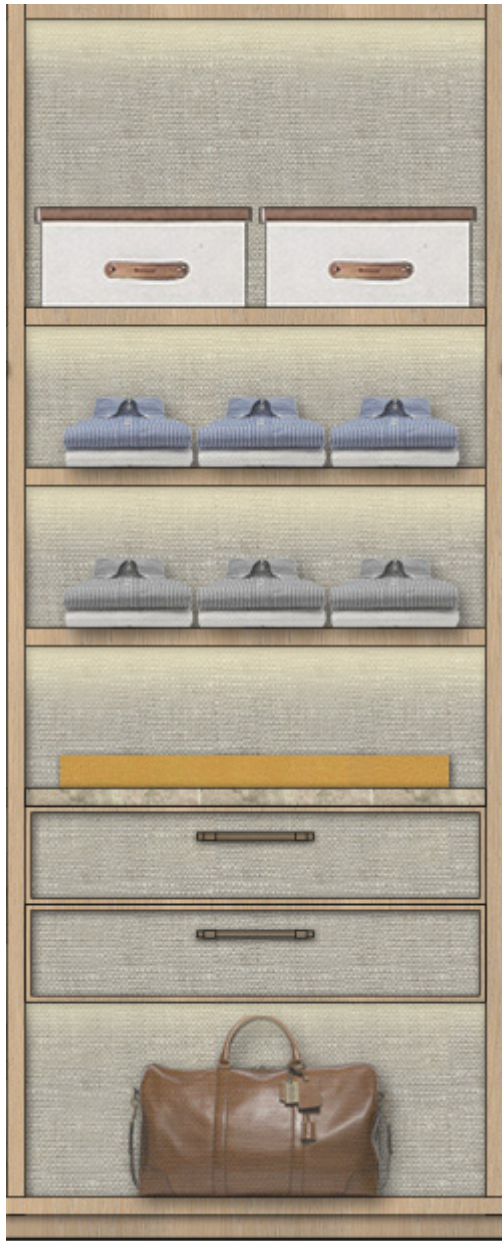
**DOUBLE SHORT HANG**  
TOP STORAGE  
SHORT HANGING  
ACCESSORIES DRAWER  
TROUSERS/SKIRT PULL OUT HANGER



**SHOE DISPLAY**  
TOP STORAGE  
SHOES RACK  
BOTTOM STORAGE



**SHOE DISPLAY & SHORT HANG**  
TOP STORAGE  
SHORT HANGING  
SHOES RACK



**OPEN SHELVES & DRESSER**  
CLOTHES SHELVES  
DRAWERS X 2  
BOTTOM STORAGE



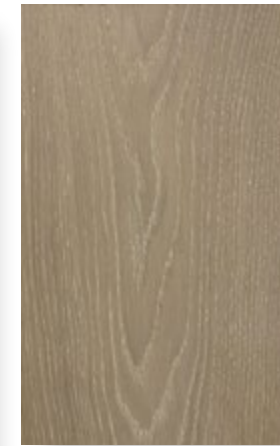


## Midnight Bar

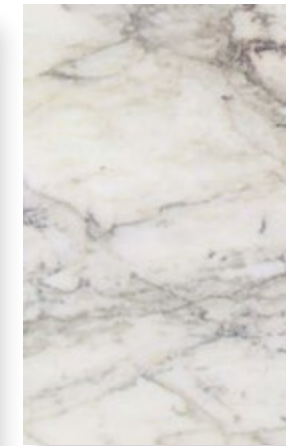
MIDNIGHT BAR MATERIALS  
WILL FOLLOW KITCHEN SELECTION



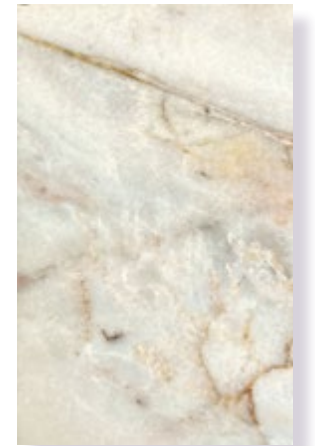
01A.



01B.



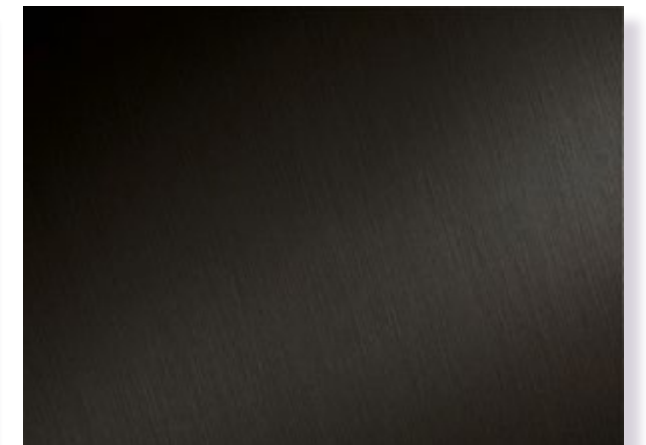
02A.



02B.



03.



04.



Ironmongery Selections



DOOR LEVER



DOOR PULL HANDLE



DOOR PULL HANDLE



PRIVACY TURN

CABINETRY HARDWARE



SOLID BRASS  
CABINET PULL

FINISHES



MID ANTIQUE BRASS  
WAXED

Midnight Bar Furniture, Fixtures & Equipment



DORNBRACHT  
TARA DECK MOUNTED KITCHEN FAUCET



FRIDGE DRAWER



BAR SINK



Stone Index



Stone Index



BRECCIA CAPRAIA  
KITCHEN



TARAHUMARA  
KITCHEN



CORSICA CREAM  
SECONDARY AND POWDER BATHROOM FLOORING



CRISTALLO TROPICALE  
POWDER ROOM VANITY



TAJ MAHAL  
PRIMARY BATHROOM



CALACATTA APUANO  
SECONDARY BATHROOM



DOLCE VITA  
WARDROBE



BRECCIA CAPRAIA  
MIDNIGHT BAR









**ORAL REPRESENTATIONS CANNOT BE RELIED UPON AS CORRECTLY STATING REPRESENTATIONS OF THE DEVELOPER. FOR CORRECT REPRESENTATIONS, MAKE REFERENCE TO THIS BROCHURE AND TO THE DOCUMENTS REQUIRED BY SECTION 718.503, FLORIDA STATUTES, TO BE FURNISHED BY A DEVELOPER TO A BUYER OR LESSEE.**

**New York Residents: THE COMPLETE OFFERING TERMS ARE FOUND IN A CPS-12 APPLICATION AVAILABLE FROM THE OFFEROR. FILE NO FILE NO. CP23-0006. WARNING: THE CALIFORNIA DEPARTMENT OF REAL ESTATE HAS NOT INSPECTED, EXAMINED, OR QUALIFIED THIS OFFERING. THIS CONDOMINIUM HAS ALSO BEEN REGISTERED WITH THE MASSACHUSETTS BOARD OF REGISTRATION OF REAL ESTATE BROKERS AND SALESPERSONS F-1279-01-01.**

Six Fisher Island Condominium (the "Condominium") is marketed as The Residences Six Fisher Island and is developed by PRH Parcel 7 Owner, LLC ("Developer" and or "Offeror"), which uses the marks of The Related Group, BH Group, and of Fisher Island under license agreements; however, neither The Related Group, BH Group, nor Fisher Island is the Developer. Tara Bernerd & Partners, Globe Invest, Douglas Elliman, and Kobi Karp provide contractual services to the Developer, and none are the Developer. All owners of a home in the Condominium approved to become lifetime members in the Fisher Island Club (the "Club") are granted a lifetime Club membership upon the closing of the Condominium home purchase subject to the owner meeting and maintaining all eligibility requirements. The Club determines eligibility for membership and the Developer has no control over the Club's eligibility requirements. The annual dues and or assessments required for Club membership shall be the member's cost and is not paid by Developer. The Club offers a nine-hole golf course, tennis facilities, spa, fitness center, dining, catering, event spaces, beach club, and marina. The Developer pays for the lifetime membership initiation fee only and does not pay annual dues or assessments of the Club, or any of the fees or charges for services, rental, dockage, slippage, food, beverages, spa services, gym services, catering, or any other costs or charges associated with a member's use of any of the Club's amenities or membership maintenance. The recreational, educational, dining, lodging, shopping, and medical facilities described are establishments on Fisher Island for the use and enjoyment of residents of Fisher Island at their own cost. The cost of use of such facilities is not included with purchase and not a part of the budget of the Condominium. The Condominium Association will own, operate, and manage a nonexclusive restaurant and an exclusive car and exclusive boat; however, the amenities owned and managed by the Association will only be available to Condominium homeowners for so long as the Association maintains the cost of owning, operating, and managing these services and amenities. Artist's conceptual renderings of exterior or site plan and depicting water, surrounding buildings, or landmarks are modified, and some surrounding buildings and landmarks are omitted. The completed Condominium, including common areas and amenities, are subject to change from what is illustrated and described. Images depicting the Condominium lifestyle are proposed only. The Condominium is developed on a site that is surrounded by water and transportation of persons and vehicles to and from Fisher Island is by a ferry service operated by The Fisher Island Transportation Department at an additional cost not paid by Developer. No bridge to Fisher Island exists. Although the Condominium site is waterfront on one side, no specific view depicted is guaranteed. This is not intended to be an offer to sell, or solicitation of an offer to buy, a condominium unit to residents of any other jurisdiction were prohibited by law. The floorplan designs, fixtures, furnishings, finishes, and décor depicted include fabrications, installations, and selections which may not be included with the purchase of a Unit. There may be finishes are available to purchase at an additional cost as an upgrade to your Unit. Consult the Prospectus for the Developer for information regarding the Unit designs and to learn what is included with your Unit purchase and what upgrades may be available at additional cost. Sketches, renderings, or photographs depicting lifestyle, amenities, food services, resort services, finishes, designs, materials, furnishings, plans, specifications, or art contained in this brochure are proposed only, and the Developer reserves the right to modify, revise, or withdraw any or all in Developer's sole discretion without notice. Dimensions and square footage are approximate and may vary depending on how measured and based upon actual construction. Also, locations and layouts of windows, doors, closets, plumbing fixtures, structural features, and architectural design elements may vary from concept to actual construction. All depictions of appliances, plumbing fixtures, counters, countertops, cabinets, soffits, floor coverings and other matters of design and décor detail are conceptual and are not necessarily included in each Unit and such drawings, images, and depictions shown should not be relied upon as representations, express or implied, of the final detail of the Condominium or any Unit. All improvements, designs and construction are subject to first obtaining the appropriate federal, state, and local permits and approvals for same which may require the Developer to alter any design, floor plan, or layout depicted. The prospectus and marketing of the Developer is not an offering of securities. No statements or representations made by Developer, or any of its agents, employees, or representatives with respect to any potential for future profit, future appreciation in value, investment opportunity potential, rental income potential, or other benefits to be derived from ownership of a Unit should be relied upon in your decision to purchase a Unit. The Developer, and its respective agents, employees, and representatives are also not tax advisors and statement(s) that may be or may have been made with respect to tax benefits of ownership should not be relied upon in your decision to purchase a Unit. Nearby services and attractions both on and off Fisher Island, including but not limited to shopping venues, hotels, restaurants, ferry services, Club amenities, medical, educational, and recreational services referenced or identified in this publication are not controlled by Developer and may not be available for use upon completion of the Condominium. There is no guarantee that the any proposed Condominium amenities, artwork, designers, contributing artists, interior designers, fitness facilities, or restaurants will be available as depicted or at all upon, or following, the completion of the Condominium. The art depicted or described may be exchanged for comparable art at the sole discretion of the Developer. Art shown or described may be loaned to, rather than owned by the Association; art installed at the time of completion of the Condominium may be removed prior to turnover to the Condominium Association and may or may not be replaced. No real estate broker or sales agent (whether engaged by Developer or not) is authorized to make any representations or other statements (verbal or written) regarding the Condominium and no deposits paid to, or other arrangements made with, any real estate broker or agents are binding on Developer. All prices are subject to change at any time and without notice, and do not include optional features, design packages, furniture packages, or premiums for upgraded Units. Consult the Prospectus of Developer to understand the amenities, proposed budget, terms, conditions, specifications, fees, Unit dimensions, site plans, and to learn what is included with purchase and by payment of regular assessments. The project graphics, renderings, photographs, and text provided herein are copyrighted works owned by the respective developer unless otherwise credited. 2023 © PRH Parcel 7 Owner, LLC, with all rights reserved.