



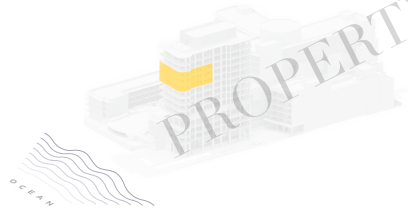
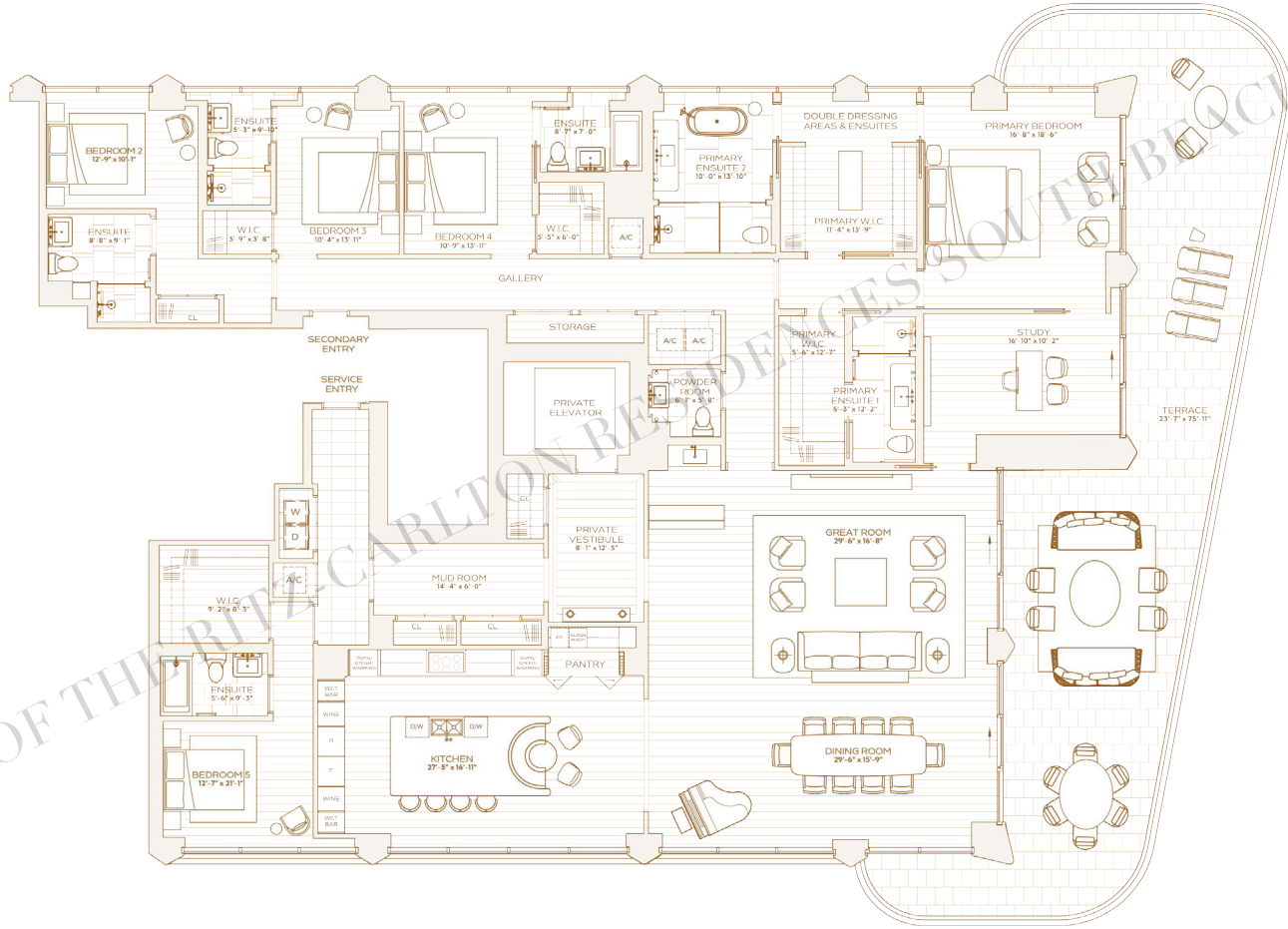
## RESIDENCE A LEVEL 14 - 16

FIVE BEDROOMS  
STUDY  
SIX BATHROOMS  
POWDER ROOM

**INTERIOR**  
4,520 SQ. FT. / 420 SQ. M

**EXTERIOR**  
1,040 SQ. FT. / 97 SQ. M

**TOTAL**  
5,560 SQ. FT. / 517 SQ. M



PROPERTY OF THE RITZ-CARLTON RESIDENCES SOUTH BEACH

OCEAN



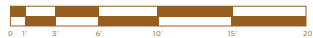
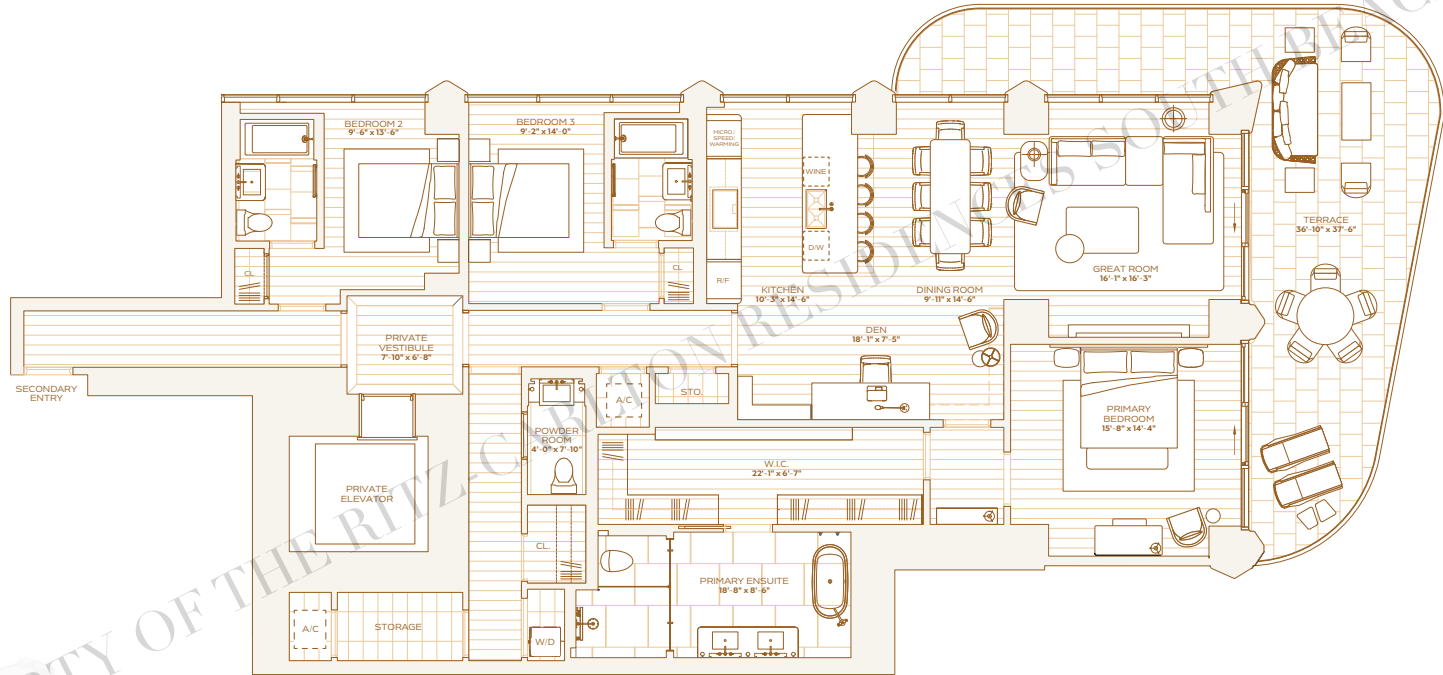
## RESIDENCE A LEVEL 5 & 6

THREE BEDROOMS  
THREE BATHROOMS  
POWDER ROOM

**INTERIOR**  
2,389 SQ. FT / 222 SQ. M

**EXTERIOR**  
602 SQ. FT / 56 SQ. M

**TOTAL**  
2,991 SQ. FT / 278 SQ. M



OCEAN



THE RITZ-CARLTON RESIDENCES SOUTH BEACH ARE NOT OWNED, DEVELOPED OR SOLD BY THE RITZ-CARLTON HOTEL COMPANY LLC OR ITS AFFILIATES ("RITZ-CARLTON"). SOME SKY DEVELOPMENT LLC IS THE RITZ-CARLTON MARKS LA CETERA LICENSEE FROM RITZ-CARLTON, WHO HAS NOT CONFIRMED THE ACCURACY OF ANY OF THE STATEMENTS OR REPRESENTATIONS MADE HEREIN. SQUARE FOOTAGE IS MEASURED TO THE EXTERIOR FACE OF EXTERIOR WALLS AND TO THE CENTERLINE OF INTERIOR DIVISION WALLS (SIC) TO THE EXTERIOR FACE OF WALLS ADJOINING CORRIDORS OR OTHER COMMON ELEMENTS OR SHARED FACILITIES WITHOUT EXCLUDING AREAS THAT MAY BE OCCUPIED BY COLUMNS OR OTHER STRUCTURAL COMPONENTS. THE METHOD OF MEASUREMENT TAKES FRESH AIR AS LARGER THAN THE DIMENSIONS THAT WOULD BE DETERMINED BY USING THE DESCRIPTION AND THE DEFINITION OF THE UNIT SET FORTH IN THE DECLARATION WHICH GENERALLY ONLY INCLUDES THE INTERIOR SURFACE BETWEEN THE INTERIOR WALLS AND EXCLUDES STRUCTURAL COMPONENTS FOR REFERENCE. THE AREA OF THE UNIT IS DETERMINED IN ACCORDANCE WITH THE UNIT BOUNDARIES SET FORTH IN THE DECLARATION AND MAY VARY WITH ACTUAL CONSTRUCTION. NOTE THAT MEASUREMENTS OF ROOMS SET FORTH ON THE FLOOR PLAN ARE GENERALLY TAKEN AT THE GREATEST POINTS OF EACH ROOM. ROOMS ARE NOT PERFECT RECTANGLES WITHOUT REGARD FOR ANY CURVED SURFACES OR PARTS. ACCORDINGLY, THE AREA OF THE ACTUAL ROOM WILL TYPICALLY BE SMALLER THAN THE PRODUCT OBTAINED BY MULTIPLYING THE STATED LENGTH TIMES WIDTH. ALL FLOOR PLAN AND DEVELOPMENT PLANS ARE SUBJECT TO CHANGE. THE DEVELOPER RESERVES THE RIGHT TO MAKE MODIFICATIONS, REVISIONS AND CHANGES TO THE PLAN AND ABSOLUTE DISCRETION. ALL DEPICTIONS OF FIXTURES, APPLIANCES, BUILT-IN COUNTERTOPS, SOFFITS, FLOORCOVERINGS, LIGHTING, LANDSCAPING AND OTHER MATTERS OF DETAIL, INCLUDING, WITHOUT LIMITATION, ITEMS OF FINISH AND DECORATION, ARE CONCEPTUAL ONLY AND ARE NOT NECESSARILY INCLUDED IN EACH UNIT. CONSULT YOUR PROSPECTUS AND PURCHASE AGREEMENT.



**THE RITZ-CARLTON RESIDENCES**  
SOUTH BEACH

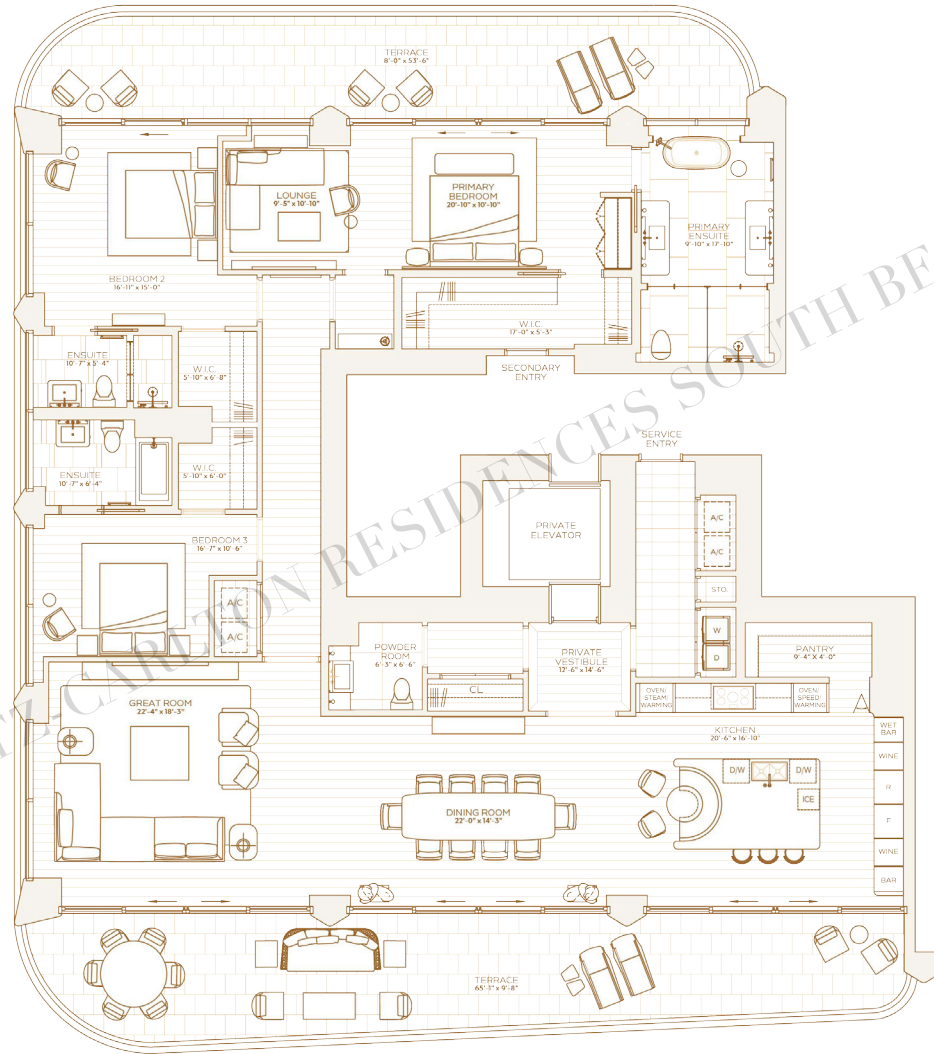
## RESIDENCE B LEVEL 11 & 12

THREE BEDROOMS  
THREE BATHROOMS  
POWDER ROOM

**INTERIOR**  
2,991 SQ. FT / 278 SQ. M

**EXTERIOR**  
912 SQ. FT / 85 SQ. M

**TOTAL**  
3,903 SQ. FT / 363 SQ. M



OCEAN



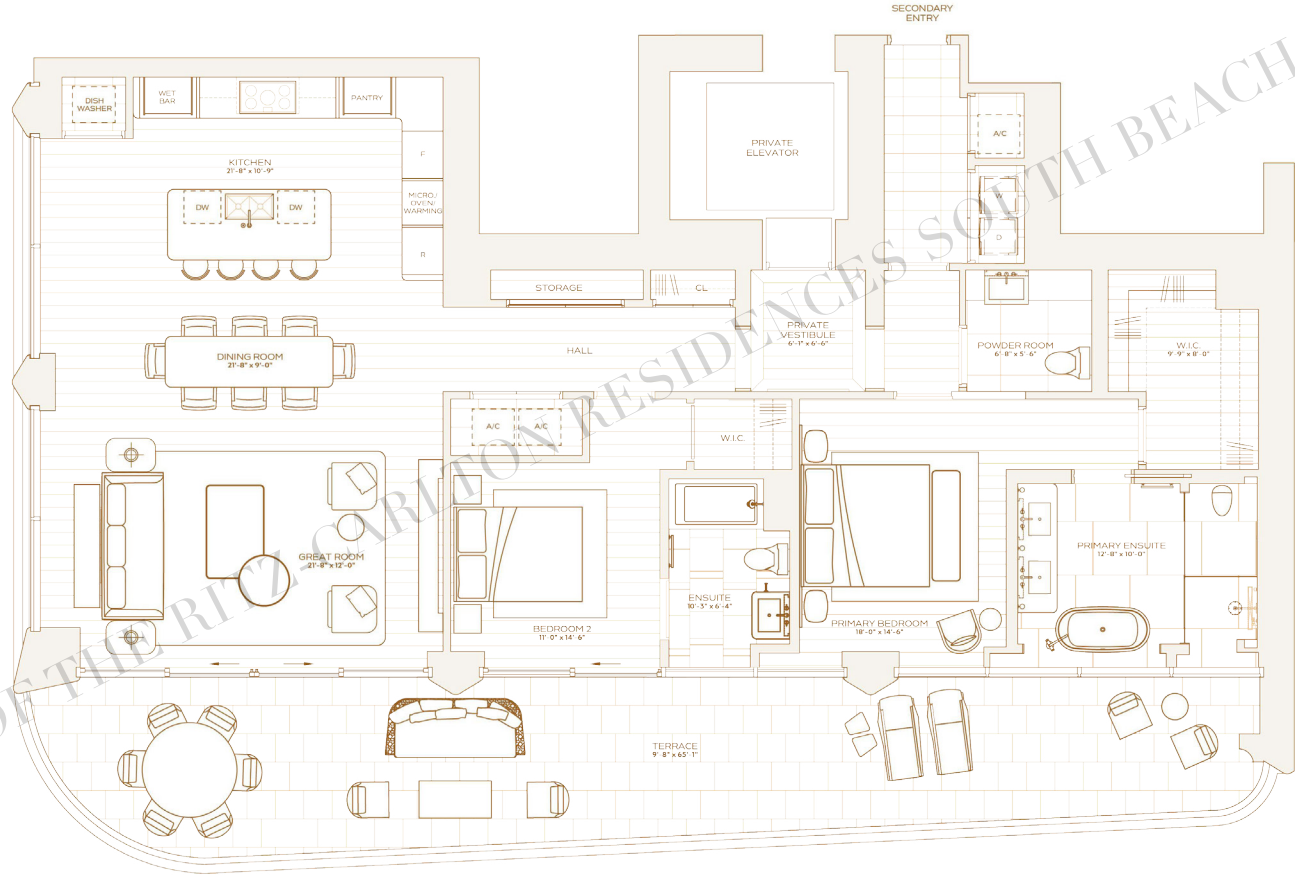
## RESIDENCE C LEVEL 9 & 10

TWO BEDROOMS  
TWO BATHROOMS  
POWDER ROOM

**INTERIOR**  
1,781 SQ. FT. / 165 SQ. M

**EXTERIOR**  
527 SQ. FT. / 49 SQ. M

**TOTAL**  
2,308 SQ. FT. / 214 SQ. M





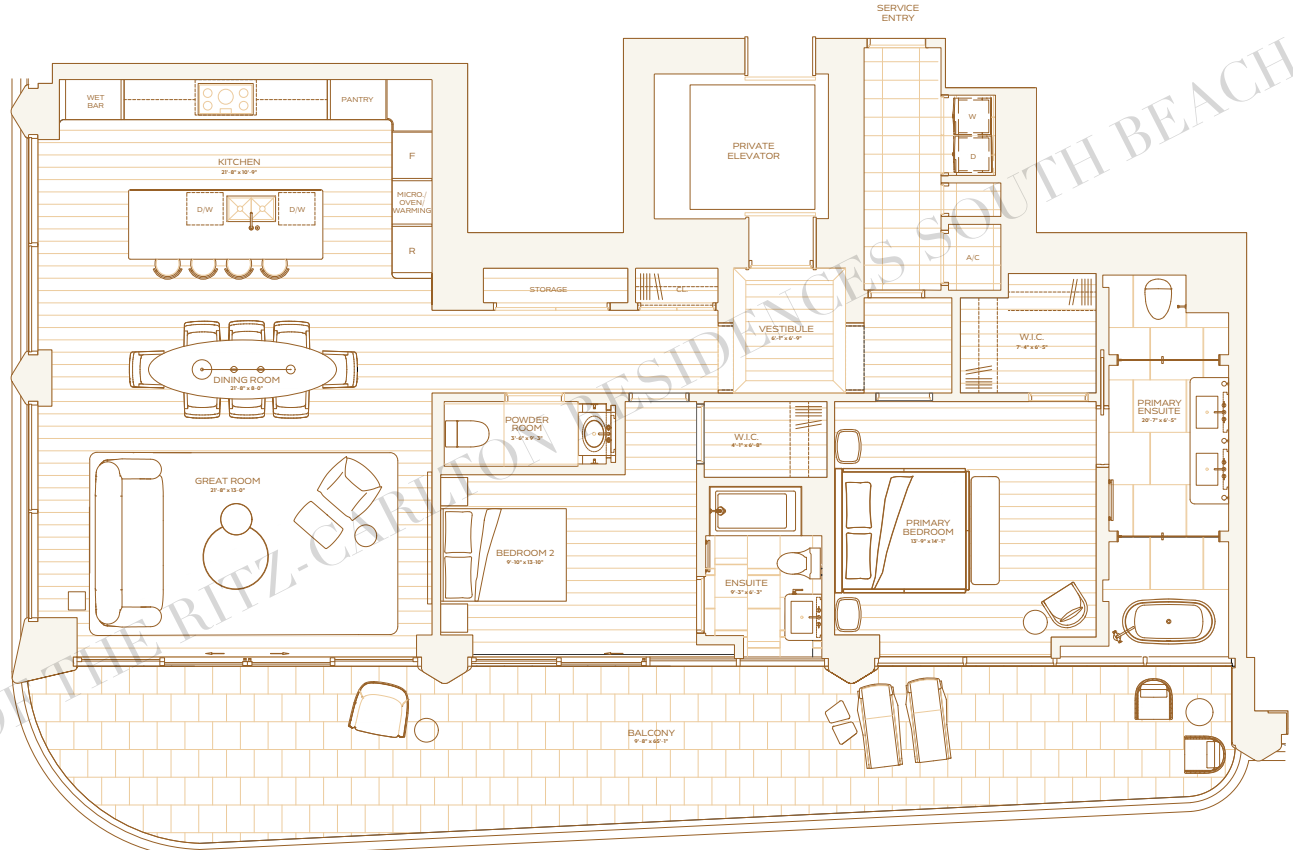
## RESIDENCE C LEVEL 9 & 10

TWO BEDROOMS  
TWO BATHROOMS  
POWDER ROOM

INTERIOR  
1,781 SQ. FT / 165 SQ. M

EXTERIOR  
527 SQ. FT / 49 SQ. M

TOTAL  
2,308 SQ. FT / 214 SQ. M



OCEAN



THE RITZ-CARLTON RESIDENCES SOUTH BEACH ARE NOT OWNED, DEVELOPED OR SOLD BY THE RITZ-CARLTON HOTEL COMPANY, LLC OR ITS AFFILIATES ("RITZ-CARLTON"). SOME SKY DEVELOPMENT, LLC IS THE RITZ-CARLTON MARKS LA CETERA LICENSEE FROM RITZ-CARLTON, WHO HAS NOT CONFIRMED THE ACCURACY OF ANY OF THE STATEMENTS OR REPRESENTATIONS MADE HEREIN. STATISTICAL INTERIOR SQUARE FOOTAGE IS MEASURED TO THE EXTERIOR FACE OF INTERIOR WALLS AND TO THE CENTERLINE OF INTERIOR DIVIDING WALLS (SIC) TO THE EXTERIOR FACE OF WALLS ADJOINING CORRIDORS OR OTHER COMMON ELEMENTS OR SHARED FACILITIES WITHOUT EXCLUDING AREAS THAT MAY BE OCCUPIED BY COLUMN OR OTHER STRUCTURAL COMPONENTS. THE METHOD OF MEASUREMENT (AREAS GREATER THAN THE DIMENSIONS THAT WOULD BE DETERMINED BY LONG) THE DESCRIPTION AND THE CENTERLINE OF THE UNIT SET FORTH IN THE DECLARATION, WHICH IS GENERALLY ONLY INCLUDES THE INTERIOR SURFACE BETWEEN THE INTERIOR WALL AND THE EXTERIOR WALL. THE AREA OF THE UNIT DETERMINED BY ACCORDANCE WITH THE UNIT BOUNDARIES SET FORTH IN THE DECLARATION IS SET FORTH IN EXHIBIT 5. TO THE DECLARATION. ALL DIMENSIONS ARE APPROXIMATE AND MAY VARY WITH ACTUAL CONSTRUCTION. NOTE THAT MEASUREMENTS OF ROOMS SET FORTH ON THE FLOOR PLAN ARE GENERALLY TAKEN AT THE GREATEST POINTS OF EACH ROOM. ROOMS ARE NOT NECESSARILY RECTANGULAR WITHOUT EXCEPTION FOR ANY CLOSET OR BUILT-IN PARTS. ACCORDINGLY, THE AREA OF THE ACTUAL ROOM WILL TYPICALLY BE SMALLER THAN THE PRODUCT OBTAINED BY MULTIPLYING THE STATED LENGTH TIMES WIDTH. ALL FLOOR PLAN AREAS ARE SUBJECT TO CHANGE. THE DEVELOPER PRESERVES THE RIGHT TO MAKE MODIFICATIONS, REVISIONS, AND CHANGES IN ITS SOLE AND ABSOLUTE DISCRETION. ALL DEPICTIONS OF FIXTURES, APPLIANCES, BUILT-IN, COUNTERTOPS, SOFFITS, FLOORCOVERINGS, LIGHTING, LANDSCAPING AND OTHER MATTERS OF DETAIL, INCLUDING, WITHOUT LIMITATION, ITEMS OF FINISH AND DECORATION, ARE CONCEPTUAL ONLY AND ARE NOT NECESSARILY INCLUDED IN EACH UNIT. CONSULT YOUR RESPECTIVE SALES REPRESENTATIVE FOR MORE INFORMATION.



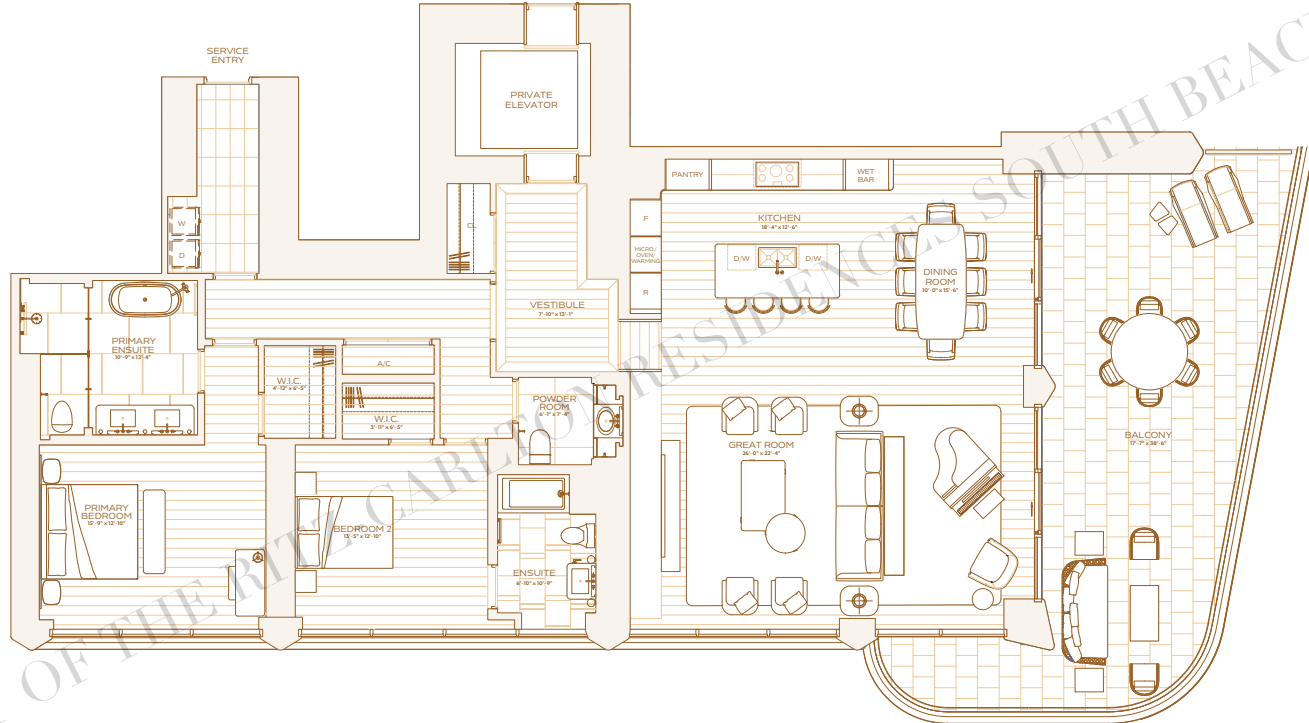
## RESIDENCE B LEVEL 8

TWO BEDROOMS  
TWO BATHROOMS  
POWDER ROOM

INTERIOR  
2,217 SQ. FT. / 206 SQ. M.

EXTERIOR  
591 SQ. FT. / 55 SQ. M.

TOTAL  
2,808 SQ. FT. / 261 SQ. M.



THE RITZ-CARLTON RESIDENCES SOUTH BEACH ARE NOT OWNED, DEVELOPED OR SOLD BY THE RITZ-CARLTON HOTEL COMPANY LLC OR ITS AFFILIATES ("RITZ-CARLTON"). SOME SKY DEVELOPMENT, LLC IS THE RITZ-CARLTON MARKETING LICENSEE FROM RITZ-CARLTON, WHO HAS NOT CONFIRMED THE ACCURACY OF ANY OF THE STATEMENTS OR REPRESENTATIONS MADE HEREIN. STATED INTERIOR SQUARE FOOTAGE IS MEASURED TO THE EXTERIOR FACE OF EXTERIOR WALLS AND TO THE CENTERLINE OF INTERIOR DIVIDING WALLS OR TO THE EXTERIOR FACE OF WALLS ADJOINING CORRIDORS OR OTHER COMMON ELEMENTS OR SHARED FACILITIES WITHOUT EXCLUDING AREAS THAT MAY BE OCCUPIED BY COLUMNS OR OTHER STRUCTURAL COMPONENTS. THE METHOD OF MEASUREMENT VARIES FROM AND IS LARGER THAN THE DIMENSIONS THAT WOULD BE DETERMINED BY USING THE DESCRIPTION AND THE CENTERLINE OF THE UNIT SET FORTH IN THE DECLARATION, WHICH GENERALLY ONLY INCLUDES THE INTERIOR SURFACE BETWEEN INTERIOR WALLS AND EXTERIOR STRUCTURAL COMPONENTS FOR REFERENCE. THE AREA OF THE UNIT DETERMINED IN ACCORDANCE WITH THE UNIT SQUARE FEET SET FORTH IN THE DECLARATION IS APPROXIMATE AND MAY VARY WITH ACTUAL CONSTRUCTION. NOTE THAT MEASUREMENTS OF ROOMS SET FORTH ON THE FLOOR PLAN ARE GENERALLY TAKEN AT THE GREATEST POINTS OF EACH ROOM. ROOMS ARE SHOWN AS PERFECT RECTANGLES WITHOUT REGARD FOR ANY CLOSET OR BUILT-IN PARTS. ACCORDINGLY, THE AREA OF THE ACTUAL ROOM WILL TYPICALLY BE SMALLER THAN THE PRODUCT OBTAINED BY MULTIPLYING THE STATED LENGTH TIMES THE STATED WIDTH. FLOOR PLAN DEVELOPERS AND ARCHITECTS ARE SUBJECT TO CHANGE. THE DELEGATED PROFESSIONAL DESIGNER HAS THE RIGHT TO MAKE MODIFICATIONS, REVISIONS, AND CHANGES IN DEPTH, DISCREETION, AND ABSOLUTE DISCRETION. ALL DEPICTIONS OF FIXTURES, FINISHES, APPLIANCES, BUILT-IN COUNTERS, SOFFITS, FLOORCOVERINGS, LIGHTING, LANDSCAPING AND OTHER MATTERS OF DETAIL, INCLUDING, WITHOUT LIMITATION, ITEMS OF FINISH AND DECORATION, ARE CONCEPTUAL ONLY AND ARE NOT NECESSARILY INCLUDED IN EACH UNIT. CONSULT YOUR PROSPECTUS AND PURCHASE AGREEMENT.



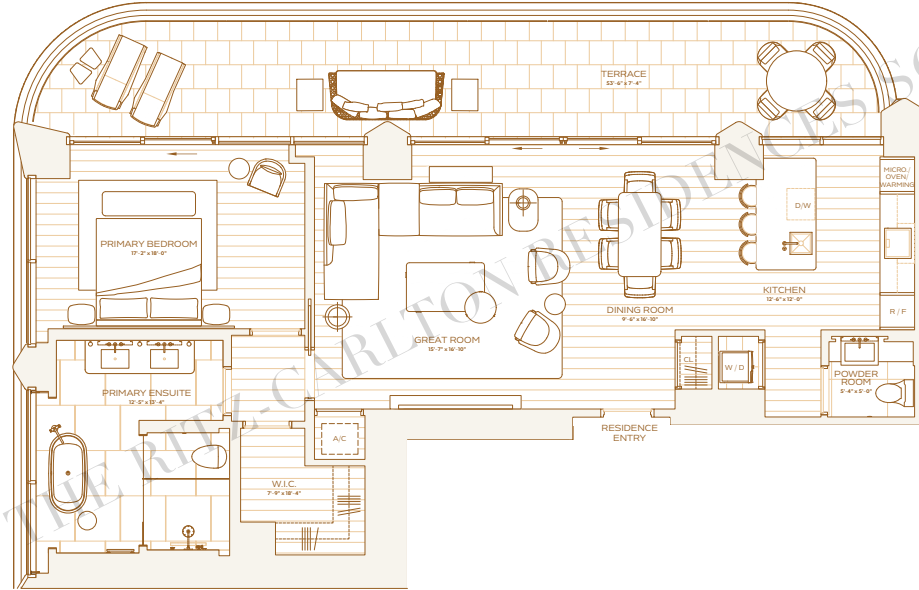
## RESIDENCE D LEVEL 8

ONE BEDROOM  
ONE BATHROOM  
POWDER ROOM

**INTERIOR**  
1,197 SQ. FT. / 111 SQ. M

**EXTERIOR**  
385 SQ. FT. / 36 SQ. M

**TOTAL**  
1,582 SQ. FT. / 147 SQ. M



OCEAN

