



South Tower—Collection I

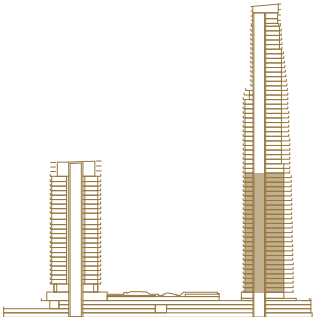
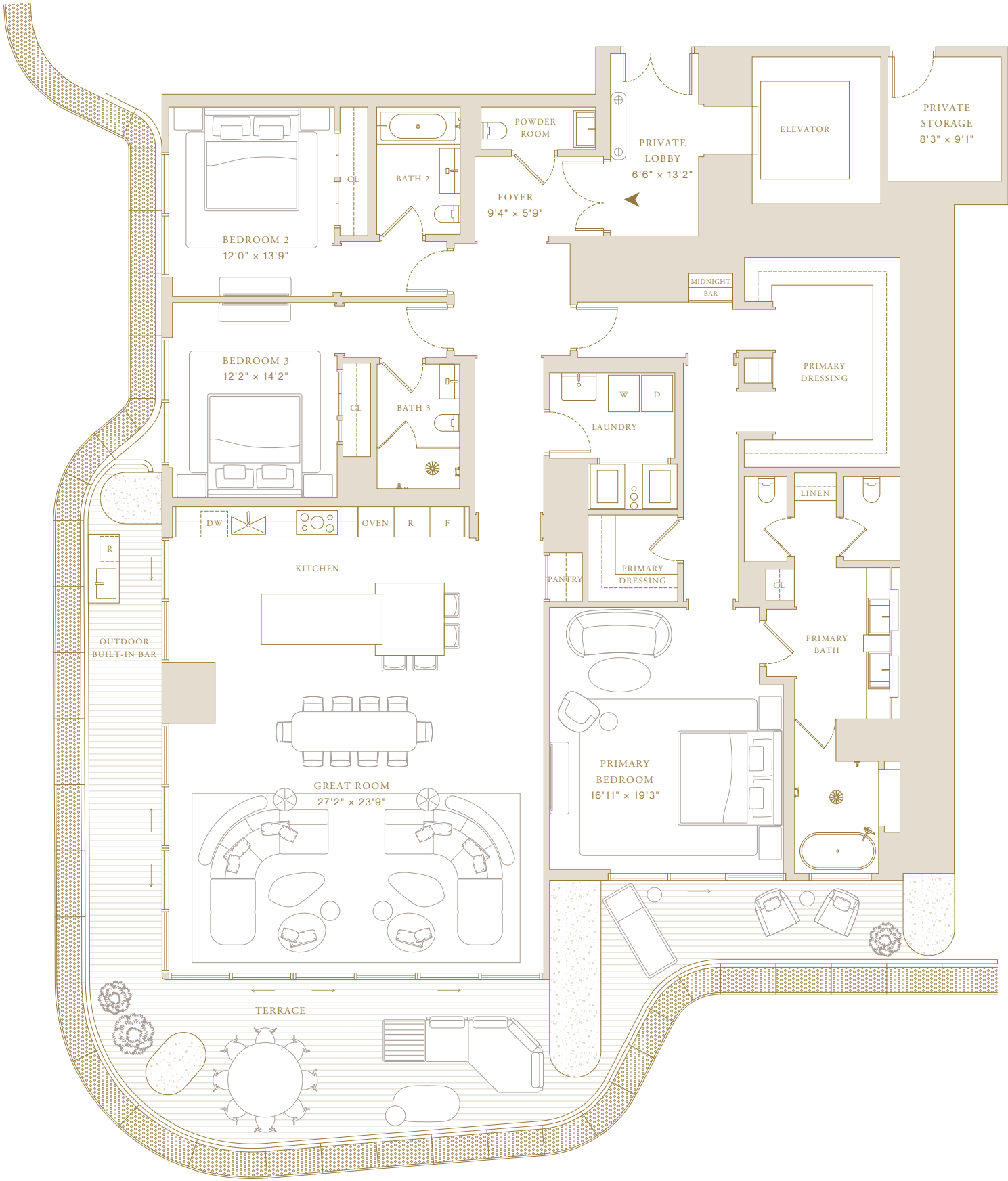
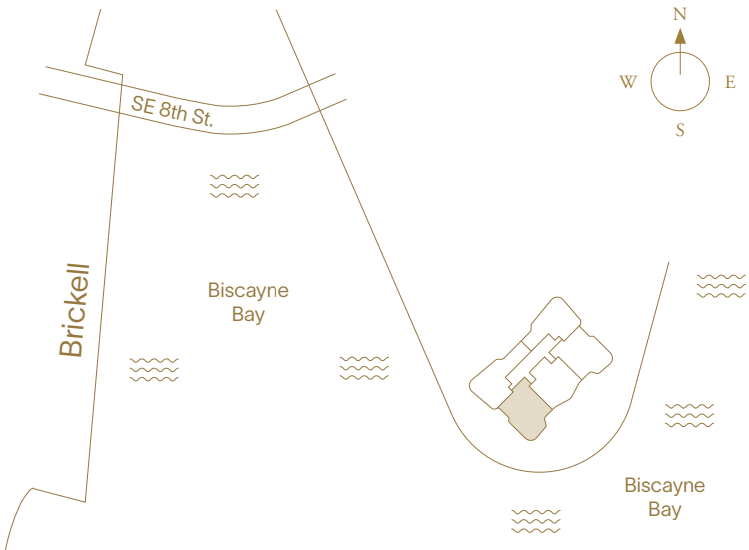
# Residence 01

Levels 5–31

- 3 Bedrooms
- 3 Bathrooms
- Powder Room

Indoor Area  
3,268 SF (304 SM)

- Features
- Private Elevator and Entry Foyer
  - Double Door Entry
  - Molteni Kitchens with Gaggenau Appliances
  - Primary Closets Designed by Tristan Auer
  - Midnight Bar
  - Laundry Room
  - Private Storage Adjacent to Residence
  - Expansive Terrace
  - Outdoor Built-in Bar



SWIRE PROPERTIES



This project is being developed by affiliates of 50A Developer LLC, a Delaware limited liability company ("Developer"), which has a limited right to use the trademarked names and logos of Swire Properties and Mandarin Oriental Hotel Group. The Residences at Mandarin Oriental, Miami ("The Residences") are not developed, sponsored, owned, offered or sold by Mandarin Oriental Hotel Group or any affiliate thereof (MOHG), and MOHG makes no representation, warranty or guaranty of any kind regarding The Residences. Developer and owners of The Residences use the Mandarin Oriental name and trademarks subject to the terms of revocable licenses from MOHG which may expire or be terminated. ORAL REPRESENTATIONS CANNOT BE RELIED UPON AS CORRECTLY STATING THE REPRESENTATIONS OF THE DEVELOPER. FOR CORRECT REPRESENTATIONS, MAKE REFERENCE TO THIS WEBSITE AND TO THE DOCUMENTS REQUIRED BY SECTION 718.503, FLORIDA STATUTES, TO BE FURNISHED BY A DEVELOPER TO A BUYER OR LESSEE. Stated square footages and dimensions are measured to the exterior boundaries of the exterior walls and the centerline of interior demising walls and in fact vary from the square footage and dimensions that would be determined by using the description and definition of the "Unit" set forth in the Declaration (which generally only includes the interior airspace between the perimeter walls and excludes all interior structural components and other common elements). This method is generally used in sales materials and is provided to allow a prospective buyer to compare the Units with units in other condominium projects that utilize the same method. Measurements of rooms set forth on this floor plan are generally taken at the farthest points of each given room (as if the room were a perfect rectangle), without regard for any cutouts or variations. Accordingly, the area of the actual room will typically be smaller than the product obtained by multiplying the stated length and width. All dimensions are estimates which will vary with actual construction, and all floor plans, specifications and other development plans are subject to change and will not necessarily accurately reflect the final plans and specifications for The Residences. Prices, features, amenities and other descriptions are preliminary and are subject to change without notice, as provided in your purchase agreement. The project graphics, renderings and text provided herein are copyrighted works owned by the Developer. All rights reserved. Unauthorized reproduction, display or other dissemination of such materials is strictly prohibited and constitutes copyright infringement.



South Tower—Collection I

# Residence 02

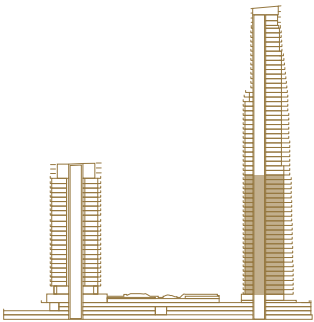
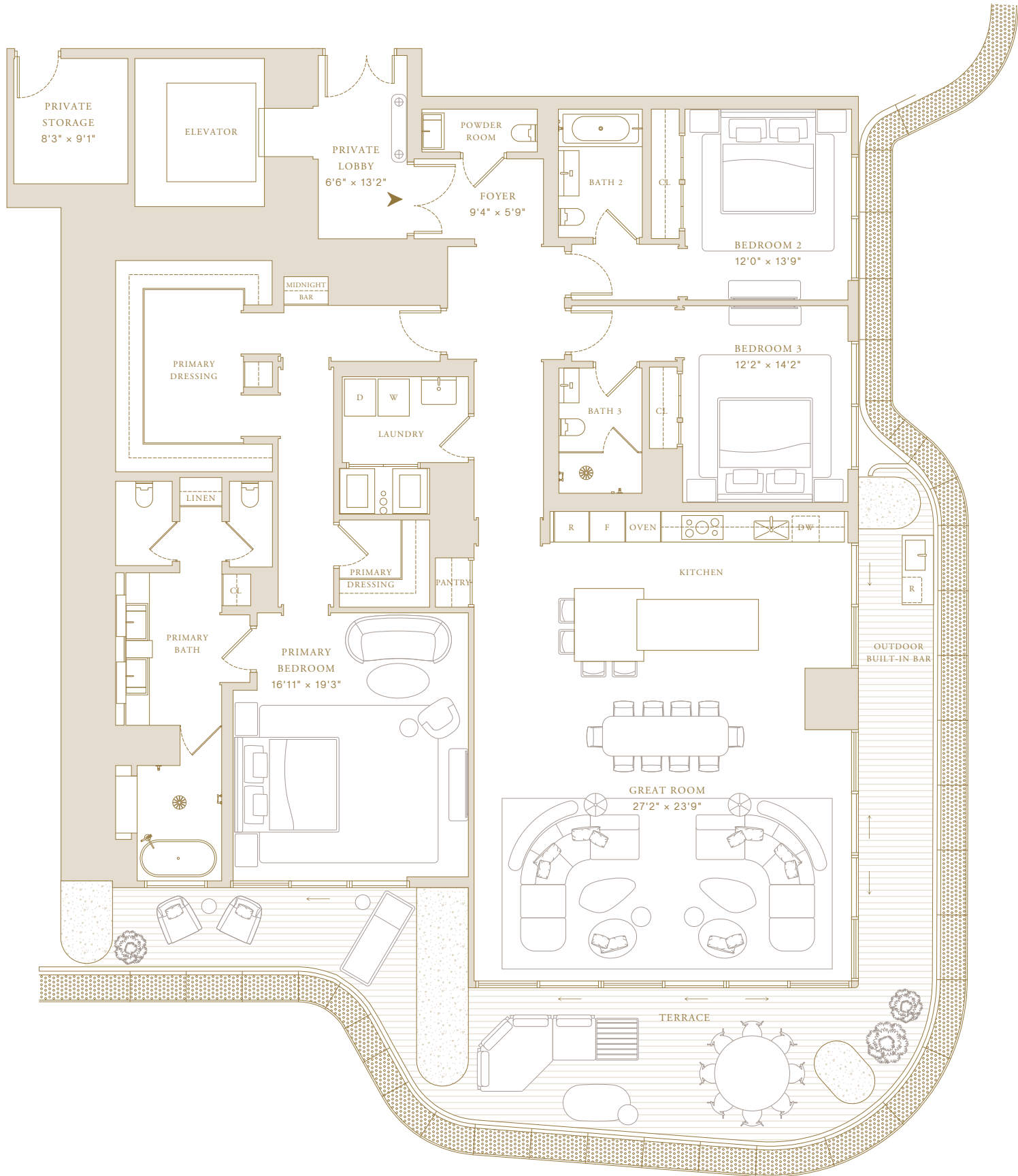
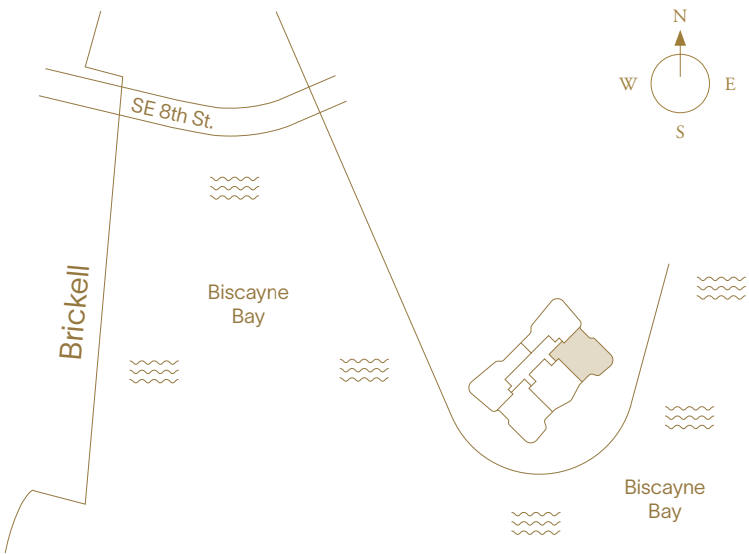
Levels 5–31

3 Bedrooms  
3 Bathrooms  
Powder Room

Indoor Area  
3,268 SF (304 SM)

### Features

- Private Elevator & Entry Foyer
- Double-door Entry
- Molteni Kitchen with Gaggenau Appliances
- Primary Closets Designed by Tristan Auer
- Midnight Bar
- Laundry Room
- Private Storage
- Expansive Terrace
- Outdoor Built-In Bar



This project is being developed by affiliates of 50A Developer LLC, a Delaware limited liability company ("Developer"), which has a limited right to use the trademarked names and logos of Swire Properties and Mandarin Oriental Hotel Group. The Residences at Mandarin Oriental, Miami ("The Residences") are not developed, sponsored, owned, offered or sold by Mandarin Oriental Hotel Group or any affiliate thereof (MOHG), and MOHG makes no representation, warranty or guaranty of any kind regarding The Residences. Developer and owners of The Residences use the Mandarin Oriental name and trademarks subject to the terms of revocable licenses from MOHG which may expire or be terminated. ORAL REPRESENTATIONS CANNOT BE RELIED UPON AS CORRECTLY STATING THE REPRESENTATIONS OF THE DEVELOPER. FOR CORRECT REPRESENTATIONS, MAKE REFERENCE TO THIS WEBSITE AND TO THE DOCUMENTS REQUIRED BY SECTION 718.503, FLORIDA STATUTES, TO BE FURNISHED BY A DEVELOPER TO A BUYER OR LESSEE. Stated square footages and dimensions are measured to the exterior boundaries of the exterior walls and the centerline of interior demising walls and in fact vary from the square footage and dimensions that would be determined by using the description and definition of the "Unit" set forth in the Declaration (which generally only includes the interior airspace between the perimeter walls and excludes all interior structural components and other common elements). This method is generally used in sales materials and is provided to allow a prospective buyer to compare the Units with units in other condominium projects that utilize the same method. Measurements of rooms set forth on this floor plan are generally taken at the farthest points of each given room (as if the room were a perfect rectangle), without regard for any cutouts or variations. Accordingly, the area of the actual room will typically be smaller than the product obtained by multiplying the stated length and width. All dimensions are estimates which will vary with actual construction, and all floor plans, specifications and other development plans are subject to change and will not necessarily accurately reflect the final plans and specifications for The Residences. Prices, features, amenities and other descriptions are preliminary and are subject to change without notice, as provided in your purchase agreement. The project graphics, renderings and text provided herein are copyrighted works owned by the Developer. All rights reserved. Unauthorized reproduction, display or other dissemination of such materials is strictly prohibited and constitutes copyright infringement.



South Tower—Collection I

# Residence 03

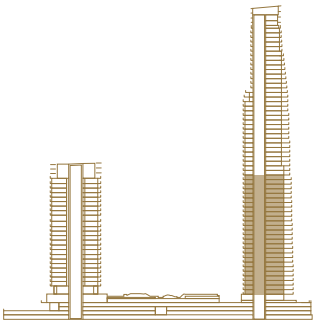
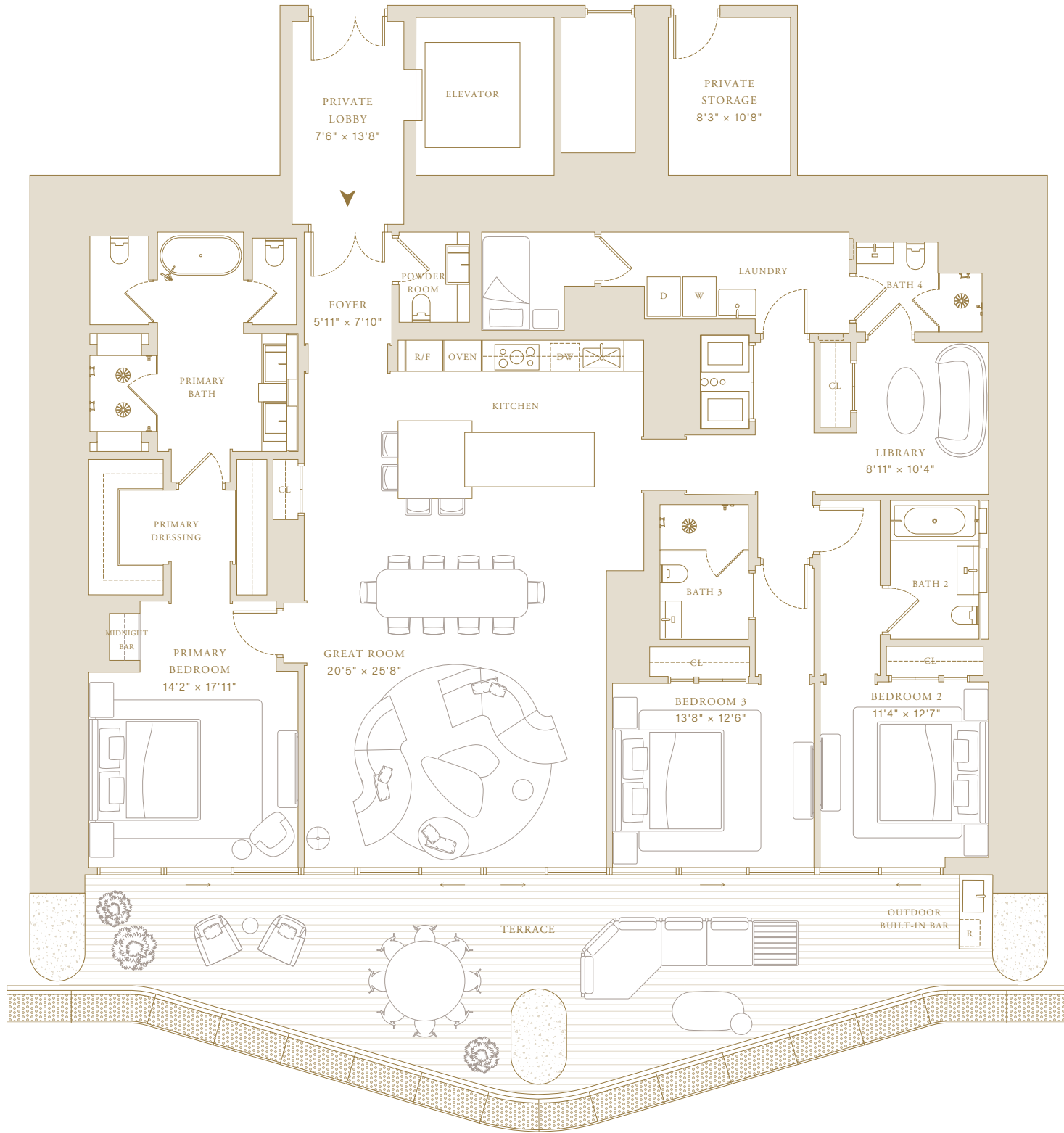
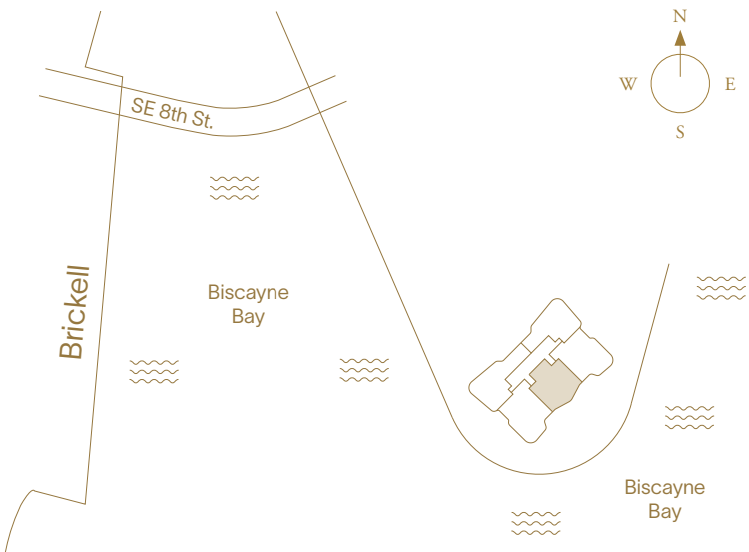
Levels 5–31

3 Bedrooms + Library  
4 Bathrooms  
Powder Room

Indoor Area  
3,064 SF (285 SM)

### Features

- Private Elevator and Entry Foyer
- Double Door Entry
- Molteni Kitchens with Gaggenau Appliances
- Primary Closets Designed by Tristan Auer
- Midnight Bar
- Library
- Laundry Room
- En-suite Staff Quarters
- Private Storage Adjacent to Residence
- Expansive Terrace
- Outdoor Built-in Bar



 **SWIRE PROPERTIES**



This project is being developed by affiliates of 50A Developer LLC, a Delaware limited liability company ("Developer"), which has a limited right to use the trademarked names and logos of Swire Properties and Mandarin Oriental Hotel Group. The Residences at Mandarin Oriental, Miami ("The Residences") are not developed, sponsored, owned, offered or sold by Mandarin Oriental Hotel Group or any affiliate thereof (MOHG), and MOHG makes no representation, warranty or guaranty of any kind regarding The Residences. Developer and owners of The Residences use the Mandarin Oriental name and trademarks subject to the terms of revocable licenses from MOHG which may expire or be terminated. ORAL REPRESENTATIONS CANNOT BE RELIED UPON AS CORRECTLY STATING THE REPRESENTATIONS OF THE DEVELOPER. FOR CORRECT REPRESENTATIONS, MAKE REFERENCE TO THIS WEBSITE AND TO THE DOCUMENTS REQUIRED BY SECTION 718.503, FLORIDA STATUTES, TO BE FURNISHED BY A DEVELOPER TO A BUYER OR LESSEE. Stated square footages and dimensions are measured to the exterior boundaries of the exterior walls and the centerline of interior demising walls and in fact vary from the square footage and dimensions that would be determined by using the description and definition of the "Unit" set forth in the Declaration (which generally only includes the interior airspace between the perimeter walls and excludes all interior structural components and other common elements). This method is generally used in sales materials and is provided to allow a prospective buyer to compare the Units with units in other condominium projects that utilize the same method. Measurements of rooms set forth on this floor plan are generally taken at the farthest points of each given room (as if the room were a perfect rectangle), without regard for any cutouts or variations. Accordingly, the area of the actual room will typically be smaller than the product obtained by multiplying the stated length and width. All dimensions are estimates which will vary with actual construction, and all floor plans, specifications and other development plans are subject to change and will not necessarily accurately reflect the final plans and specifications for The Residences. Prices, features, amenities and other descriptions are preliminary and are subject to change without notice, as provided in your purchase agreement. The project graphics, renderings and text provided herein are copyrighted works owned by the Developer. All rights reserved. Unauthorized reproduction, display or other dissemination of such materials is strictly prohibited and constitutes copyright infringement.



South Tower—Collection I

# Residence 04

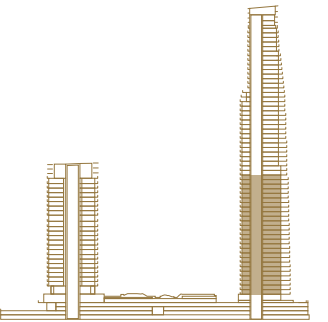
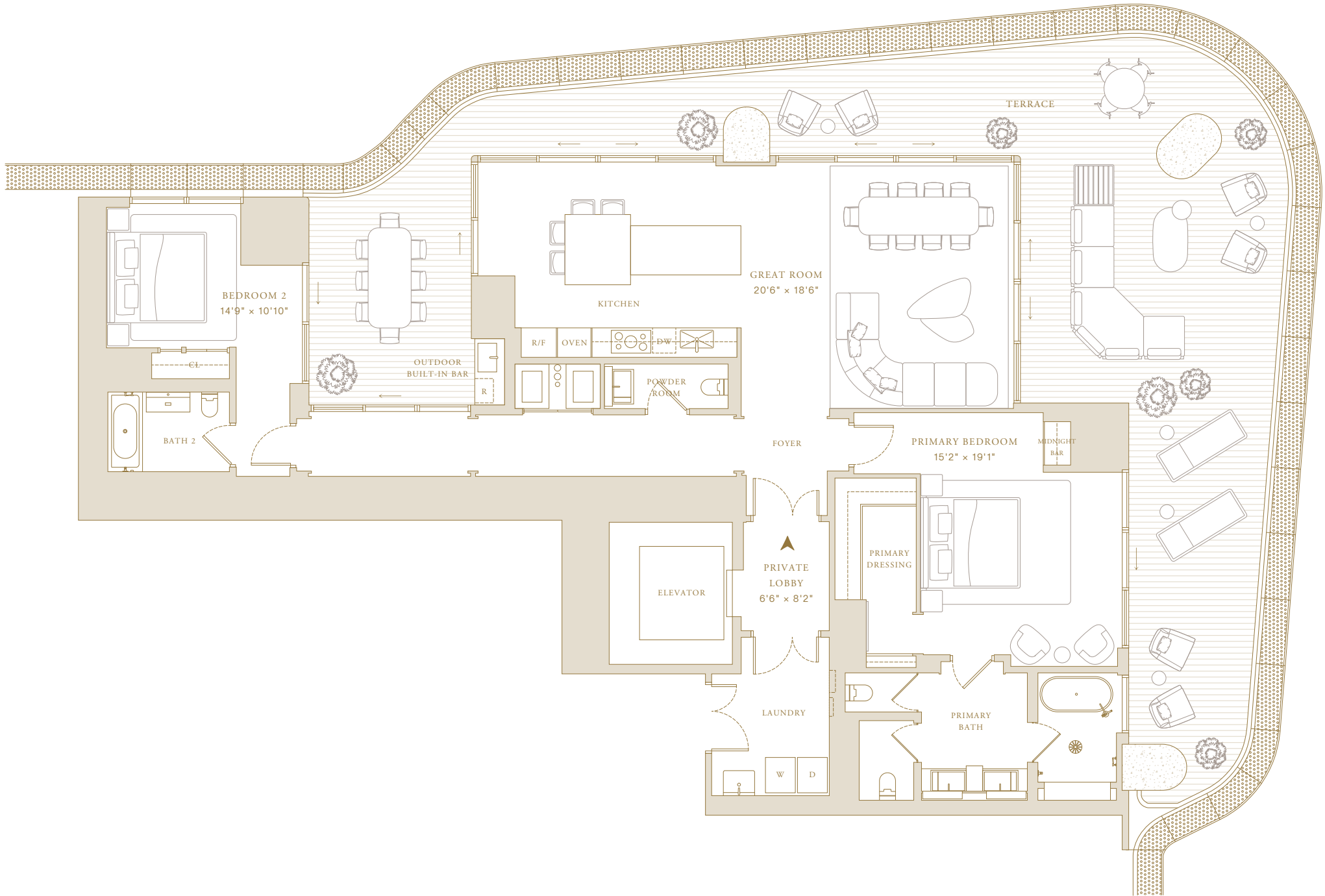
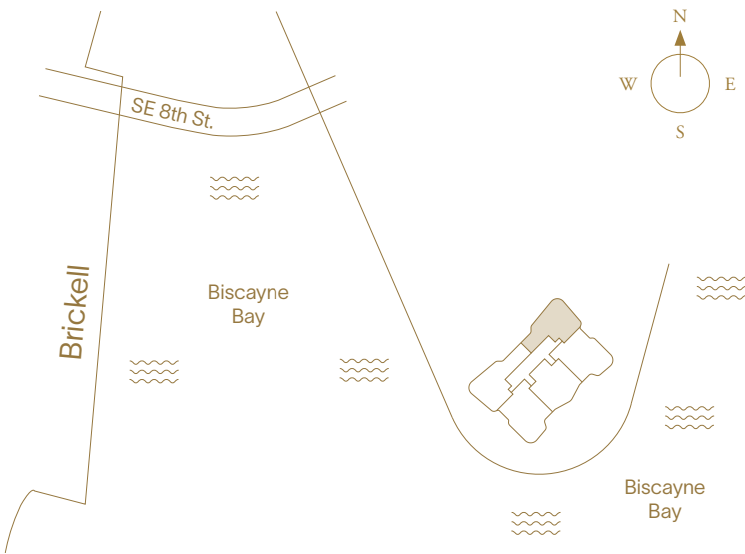
Levels 5–31

2 Bedrooms  
2 Bathrooms  
Powder Room

Indoor Area  
2,333 SF (217 SM)

Features

- Private Elevator and Entry Foyer
- Double Door Entry
- Molteni Kitchens with Gaggenau Appliances
- Primary Closets Designed by Tristan Auer
- Midnight Bar
- Laundry Room
- Private Storage on Level 47
- Expansive Terrace
- Outdoor Built-in Bar
- Courtyard Entertainment



 SWIRE PROPERTIES



This project is being developed by affiliates of 50A Developer LLC, a Delaware limited liability company ("Developer"), which has a limited right to use the trademarked names and logos of Swire Properties and Mandarin Oriental Hotel Group. The Residences at Mandarin Oriental, Miami ("The Residences") are not developed, sponsored, owned, offered or sold by Mandarin Oriental Hotel Group or any affiliate thereof (MOHG), and MOHG makes no representation, warranty or guaranty of any kind regarding The Residences. Developer and owners of The Residences use the Mandarin Oriental name and trademarks subject to the terms of revocable licenses from MOHG which may expire or be terminated. ORAL REPRESENTATIONS CANNOT BE RELIED UPON AS CORRECTLY STATING THE REPRESENTATIONS OF THE DEVELOPER. FOR CORRECT REPRESENTATIONS, MAKE REFERENCE TO THIS WEBSITE AND TO THE DOCUMENTS REQUIRED BY SECTION 718.503, FLORIDA STATUTES, TO BE FURNISHED BY A DEVELOPER TO A BUYER OR LESSEE. Stated square footages and dimensions are measured to the exterior boundaries of the exterior walls and the centerline of interior demising walls and in fact vary from the square footage and dimensions that would be determined by using the description and definition of the "Unit" set forth in the Declaration (which generally only includes the interior airspace between the perimeter walls and excludes all interior structural components and other common elements). This method is generally used in sales materials and is provided to allow a prospective buyer to compare the Units with units in other condominium projects that utilize the same method. Measurements of rooms set forth on this floor plan are generally taken at the farthest points of each given room (as if the room were a perfect rectangle), without regard for any cutouts or variations. Accordingly, the area of the actual room will typically be smaller than the product obtained by multiplying the stated length and width. All dimensions are estimates which will vary with actual construction, and all floor plans, specifications and other development plans are subject to change and will not necessarily accurately reflect the final plans and specifications for The Residences. Prices, features, amenities and other descriptions are preliminary and are subject to change without notice, as provided in your purchase agreement. The project graphics, renderings and text provided herein are copyrighted works owned by the Developer. All rights reserved. Unauthorized reproduction, display or other dissemination of such materials is strictly prohibited and constitutes copyright infringement.



South Tower—Collection I

# Residence 05

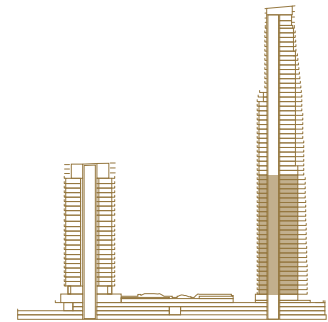
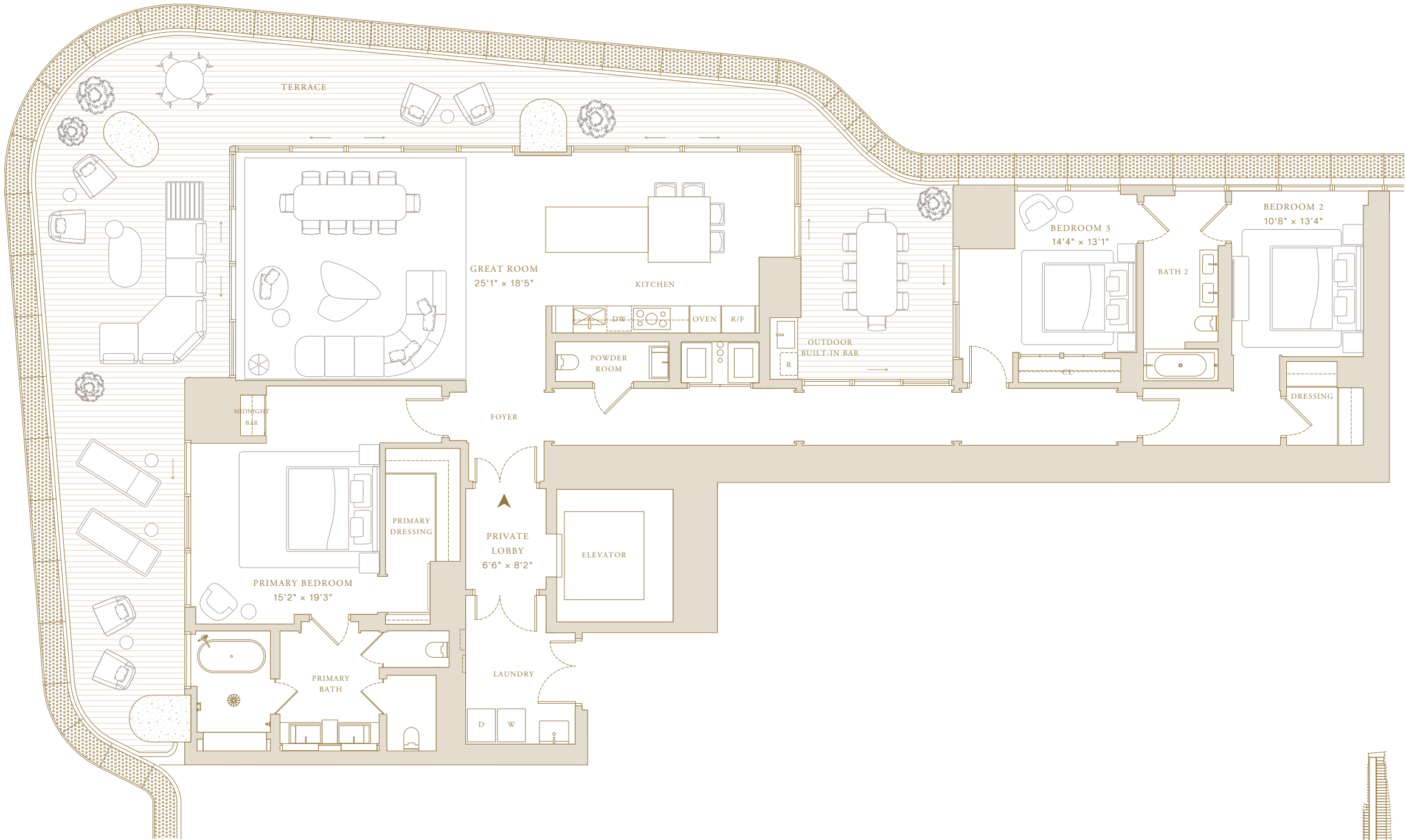
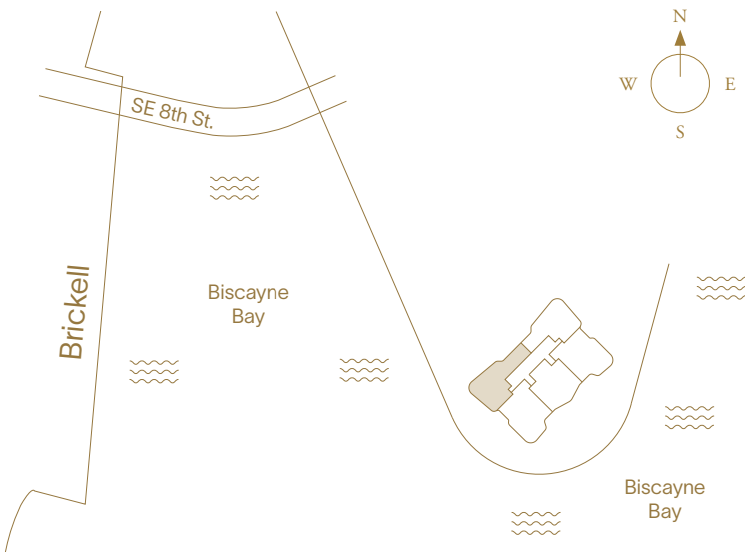
Levels 5–31

3 Bedrooms  
2 Bathrooms  
Powder Room

Indoor Area  
2,826 SF (263 SM)

### Features

- Private Elevator and Entry Foyer
- Double Door Entry
- Molteni Kitchens with Gaggenau appliances
- Primary Closets Designed by Tristan Auer
- Midnight Bar
- Laundry Room
- Private Storage on Level 47
- Expansive Terrace
- Outdoor Built-in Bar
- Courtyard Entertainment



 **SWIRE PROPERTIES**



This project is being developed by affiliates of 50A Developer LLC, a Delaware limited liability company ("Developer"), which has a limited right to use the trademarked names and logos of Swire Properties and Mandarin Oriental Hotel Group. The Residences at Mandarin Oriental, Miami ("The Residences") are not developed, sponsored, owned, offered or sold by Mandarin Oriental Hotel Group or any affiliate thereof (MOHG), and MOHG makes no representation, warranty or guaranty of any kind regarding The Residences. Developer and owners of The Residences use the Mandarin Oriental name and trademarks subject to the terms of revocable licenses from MOHG which may expire or be terminated. ORAL REPRESENTATIONS CANNOT BE RELIED UPON AS CORRECTLY STATING THE REPRESENTATIONS OF THE DEVELOPER. FOR CORRECT REPRESENTATIONS, MAKE REFERENCE TO THIS WEBSITE AND TO THE DOCUMENTS REQUIRED BY SECTION 718.503, FLORIDA STATUTES, TO BE FURNISHED BY A DEVELOPER TO A BUYER OR LESSEE. Stated square footages and dimensions are measured to the exterior boundaries of the exterior walls and the centerline of interior demising walls and in fact vary from the square footage and dimensions that would be determined by using the description and definition of the "Unit" set forth in the Declaration (which generally only includes the interior airspace between the perimeter walls and excludes all interior structural components and other common elements). This method is generally used in sales materials and is provided to allow a prospective buyer to compare the Units with units in other condominium projects that utilize the same method. Measurements of rooms set forth on this floor plan are generally taken at the farthest points of each given room (as if the room were a perfect rectangle), without regard for any cutouts or variations. Accordingly, the area of the actual room will typically be smaller than the product obtained by multiplying the stated length and width. All dimensions are estimates which will vary with actual construction, and all floor plans, specifications and other development plans are subject to change and will not necessarily accurately reflect the final plans and specifications for The Residences. Prices, features, amenities and other descriptions are preliminary and are subject to change without notice, as provided in your purchase agreement. The project graphics, renderings and text provided herein are copyrighted works owned by the Developer. All rights reserved. Unauthorized reproduction, display or other dissemination of such materials is strictly prohibited and constitutes copyright infringement.





South Tower—Collection II

# Residence 01

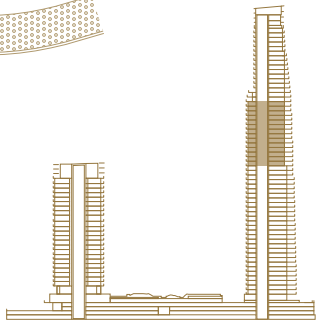
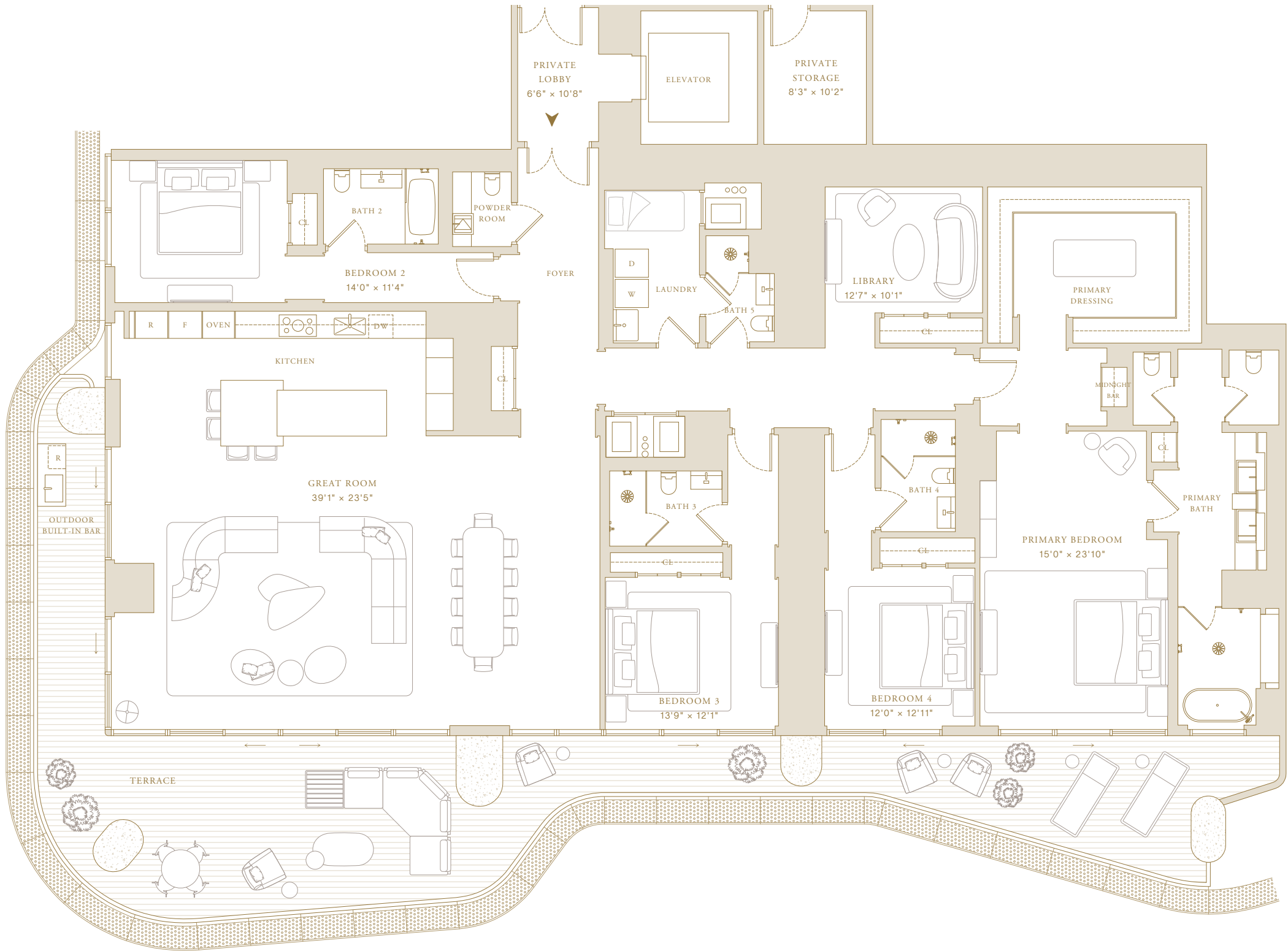
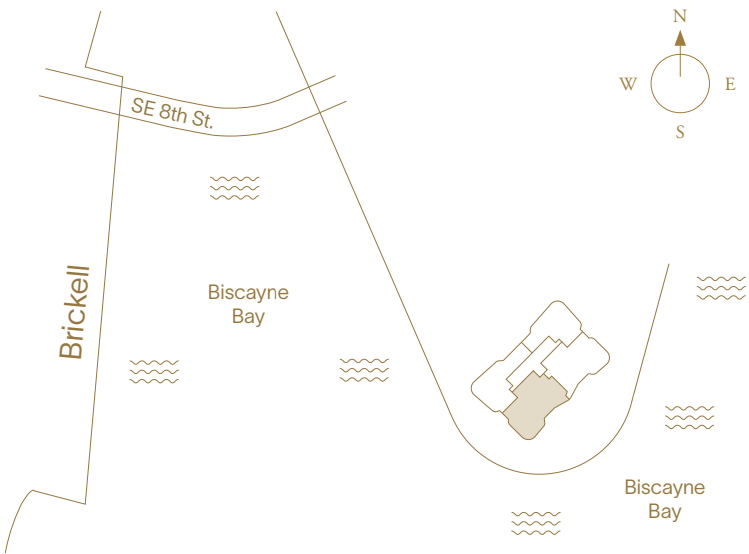
Levels 33–46

4 Bedrooms + Library  
5 Bathrooms  
Powder Room

Indoor Area  
4,352 SF (404 SM)

### Features

- Private Elevator and Entry Foyer
- Double Door Entry
- Molteni Kitchens with Gaggenau appliances
- Primary Closets Designed by Tristan Auer
- Midnight Bar
- Library
- Laundry Room
- En-suite Staff Quarters
- Private Storage Adjacent to Residence
- Expansive Terrace
- Outdoor Built-in Bar



SWIRE PROPERTIES



This project is being developed by affiliates of 50A Developer LLC, a Delaware limited liability company ("Developer"), which has a limited right to use the trademarked names and logos of Swire Properties and Mandarin Oriental Hotel Group. The Residences at Mandarin Oriental, Miami ("The Residences") are not developed, sponsored, owned, offered or sold by Mandarin Oriental Hotel Group or any affiliate thereof (MOHG), and MOHG makes no representation, warranty or guaranty of any kind regarding The Residences. Developer and owners of The Residences use the Mandarin Oriental name and trademarks subject to the terms of revocable licenses from MOHG which may expire or be terminated. ORAL REPRESENTATIONS CANNOT BE RELIED UPON AS CORRECTLY STATING THE REPRESENTATIONS OF THE DEVELOPER. FOR CORRECT REPRESENTATIONS, MAKE REFERENCE TO THIS WEBSITE AND TO THE DOCUMENTS REQUIRED BY SECTION 718.503, FLORIDA STATUTES, TO BE FURNISHED BY A DEVELOPER TO A BUYER OR LESSEE. Stated square footages and dimensions are measured to the exterior boundaries of the exterior walls and the centerline of interior demising walls and in fact vary from the square footage and dimensions that would be determined by using the description and definition of the "Unit" set forth in the Declaration (which generally only includes the interior airspace between the perimeter walls and excludes all interior structural components and other common elements). This method is generally used in sales materials and is provided to allow a prospective buyer to compare the Units with units in other condominium projects that utilize the same method. Measurements of rooms set forth on this floor plan are generally taken at the farthest points of each given room (as if the room were a perfect rectangle), without regard for any cutouts or variations. Accordingly, the area of the actual room will typically be smaller than the product obtained by multiplying the stated length and width. All dimensions are estimates which will vary with actual construction, and all floor plans, specifications and other development plans are subject to change and will not necessarily accurately reflect the final plans and specifications for The Residences. Prices, features, amenities and other descriptions are preliminary and are subject to change without notice, as provided in your purchase agreement. The project graphics, renderings and text provided herein are copyrighted works owned by the Developer. All rights reserved. Unauthorized reproduction, display or other dissemination of such materials is strictly prohibited and constitutes copyright infringement.



South Tower—Collection II

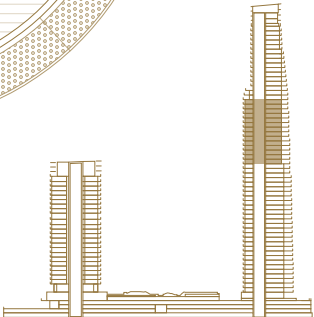
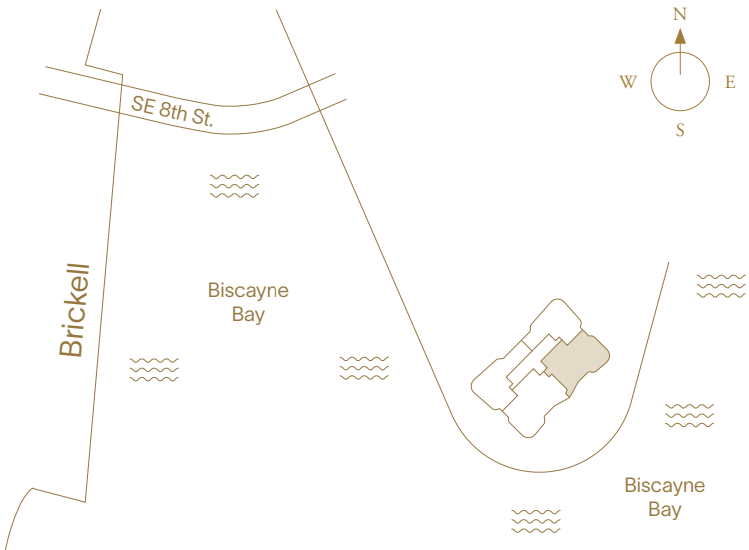
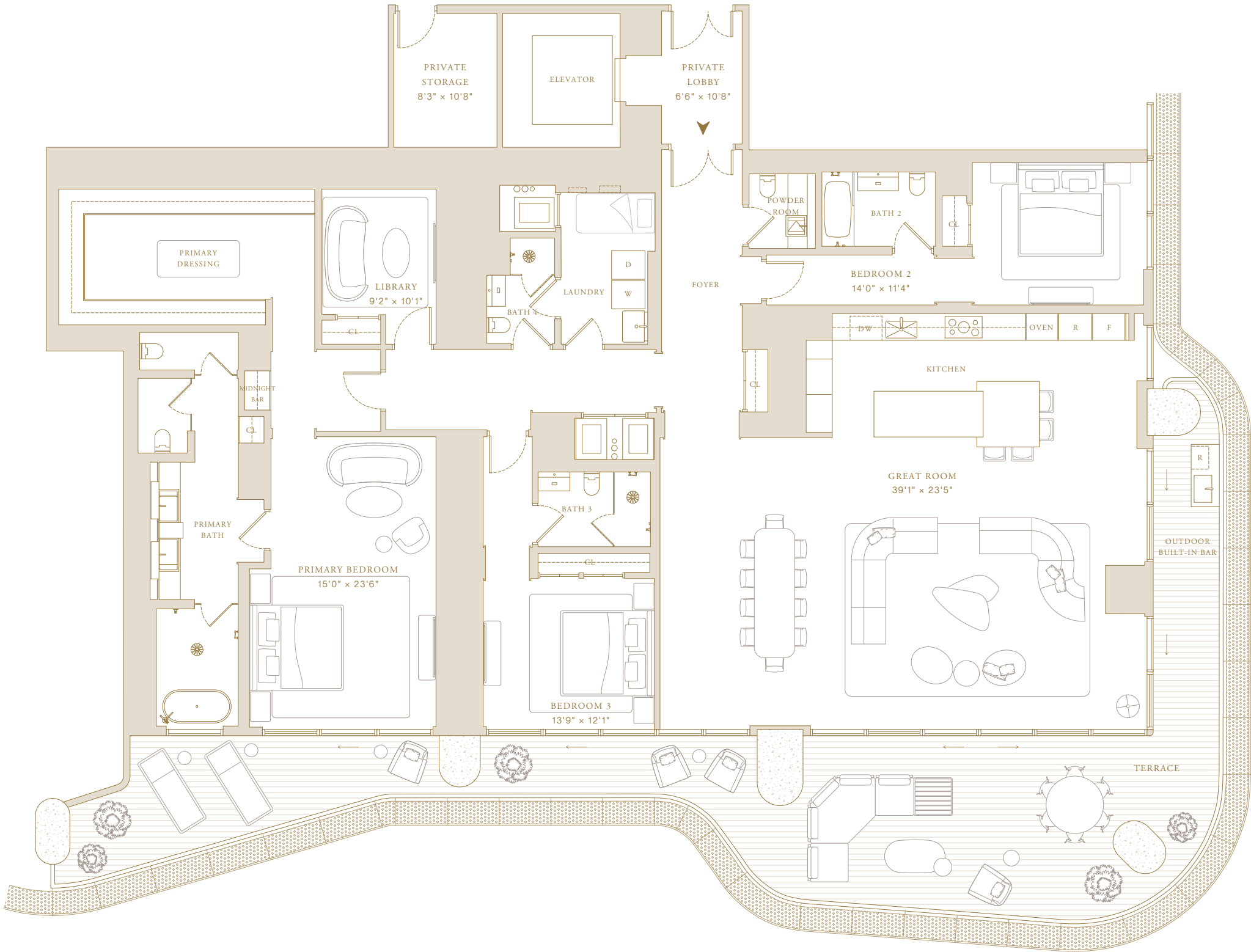
# Residence 02

Levels 33–46

3 Bedrooms + Library  
4 Bathrooms  
Powder Room

Indoor Area  
3,959 SF (368 SM)

- Features
- Private Elevator and Entry Foyer
  - Double Door Entry
  - Molteni Kitchens with Gaggenau appliances
  - Primary Closets Designed by Tristan Auer
  - Midnight Bar
  - Library
  - Laundry Room
  - En-suite Staff Quarters
  - Private Storage Adjacent to Residence
  - Expansive Terrace
  - Outdoor Built-in Bar



This project is being developed by affiliates of 50A Developer LLC, a Delaware limited liability company ("Developer"), which has a limited right to use the trademarked names and logos of Swire Properties and Mandarin Oriental Hotel Group. The Residences at Mandarin Oriental, Miami ("The Residences") are not developed, sponsored, owned, offered or sold by Mandarin Oriental Hotel Group or any affiliate thereof (MOHG), and MOHG makes no representation, warranty or guaranty of any kind regarding The Residences. Developer and owners of The Residences use the Mandarin Oriental name and trademarks subject to the terms of revocable licenses from MOHG which may expire or be terminated. ORAL REPRESENTATIONS CANNOT BE RELIED UPON AS CORRECTLY STATING THE REPRESENTATIONS OF THE DEVELOPER. FOR CORRECT REPRESENTATIONS, MAKE REFERENCE TO THIS WEBSITE AND TO THE DOCUMENTS REQUIRED BY SECTION 718.503, FLORIDA STATUTES, TO BE FURNISHED BY A DEVELOPER TO A BUYER OR LESSEE. Stated square footages and dimensions are measured to the exterior boundaries of the exterior walls and the centerline of interior demising walls and in fact vary from the square footage and dimensions that would be determined by using the description and definition of the "Unit" set forth in the Declaration (which generally only includes the interior airspace between the perimeter walls and excludes all interior structural components and other common elements). This method is generally used in sales materials and is provided to allow a prospective buyer to compare the Units with units in other condominium projects that utilize the same method. Measurements of rooms set forth on this floor plan are generally taken at the farthest points of each given room (as if the room were a perfect rectangle), without regard for any cutouts or variations. Accordingly, the area of the actual room will typically be smaller than the product obtained by multiplying the stated length and width. All dimensions are estimates which will vary with actual construction, and all floor plans, specifications and other development plans are subject to change and will not necessarily accurately reflect the final plans and specifications for The Residences. Prices, features, amenities and other descriptions are preliminary and are subject to change without notice, as provided in your purchase agreement. The project graphics, renderings and text provided herein are copyrighted works owned by the Developer. All rights reserved. Unauthorized reproduction, display or other dissemination of such materials is strictly prohibited and constitutes copyright infringement.





South Tower—Collection II

# Residence 03

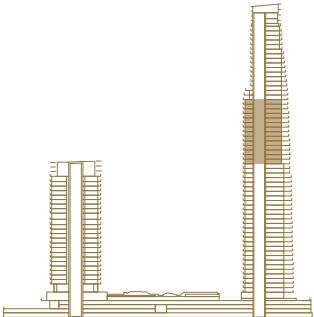
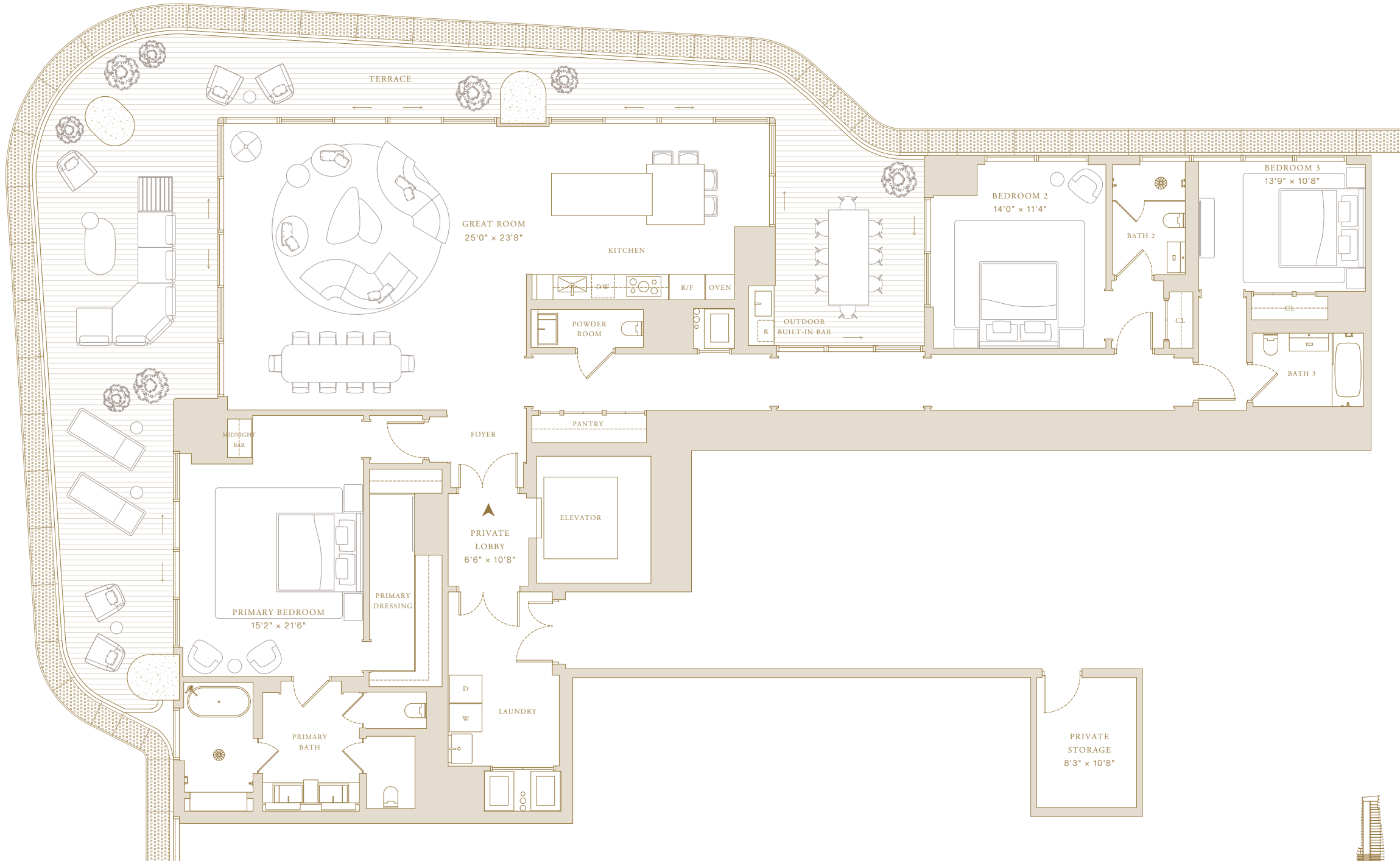
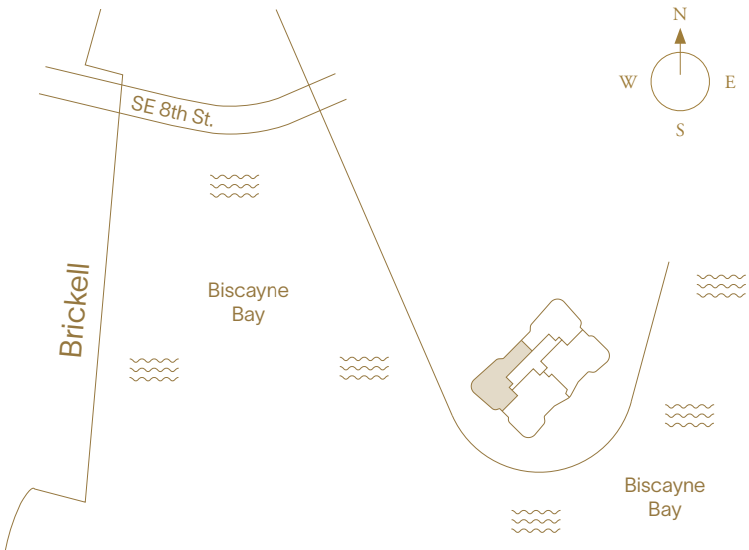
Levels 33–46

3 Bedrooms  
3 Bathrooms  
Powder Room

Indoor Area  
3,122 SF (290 SM)

### Features

- Private Elevator and Entry Foyer
- Double Door Entry
- Molteni Kitchens with Gaggenau appliances
- Primary Closets Designed by Tristan Auer
- Midnight Bar
- Private Storage
- Laundry Room
- Expansive Terrace
- Outdoor Built-in Bar
- Courtyard Entertainment



This project is being developed by affiliates of 50A Developer LLC, a Delaware limited liability company ("Developer"), which has a limited right to use the trademarked names and logos of Swire Properties and Mandarin Oriental Hotel Group. The Residences at Mandarin Oriental, Miami ("The Residences") are not developed, sponsored, owned, offered or sold by Mandarin Oriental Hotel Group or any affiliate thereof (MOHG), and MOHG makes no representation, warranty or guaranty of any kind regarding The Residences. Developer and owners of The Residences use the Mandarin Oriental name and trademarks subject to the terms of revocable licenses from MOHG which may expire or be terminated. ORAL REPRESENTATIONS CANNOT BE RELIED UPON AS CORRECTLY STATING THE REPRESENTATIONS OF THE DEVELOPER. FOR CORRECT REPRESENTATIONS, MAKE REFERENCE TO THIS WEBSITE AND TO THE DOCUMENTS REQUIRED BY SECTION 718.503, FLORIDA STATUTES, TO BE FURNISHED BY A DEVELOPER TO A BUYER OR LESSEE. Stated square footages and dimensions are measured to the exterior boundaries of the exterior walls and the centerline of interior demising walls and in fact vary from the square footage and dimensions that would be determined by using the description and definition of the "Unit" set forth in the Declaration (which generally only includes the interior airspace between the perimeter walls and excludes all interior structural components and other common elements). This method is generally used in sales materials and is provided to allow a prospective buyer to compare the Units with units in other condominium projects that utilize the same method. Measurements of rooms set forth on this floor plan are generally taken at the farthest points of each given room (as if the room were a perfect rectangle), without regard for any cutouts or variations. Accordingly, the area of the actual room will typically be smaller than the product obtained by multiplying the stated length and width. All dimensions are estimates which will vary with actual construction, and all floor plans, specifications and other development plans are subject to change and will not necessarily accurately reflect the final plans and specifications for The Residences. Prices, features, amenities and other descriptions are preliminary and are subject to change without notice, as provided in your purchase agreement. The project graphics, renderings and text provided herein are copyrighted works owned by the Developer. All rights reserved. Unauthorized reproduction, display or other dissemination of such materials is strictly prohibited and constitutes copyright infringement.







South Tower—Collection II

# Residence 04

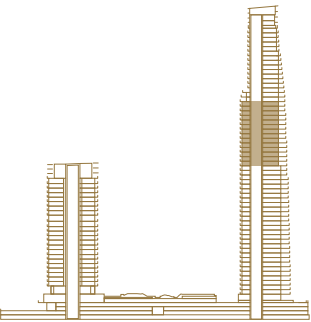
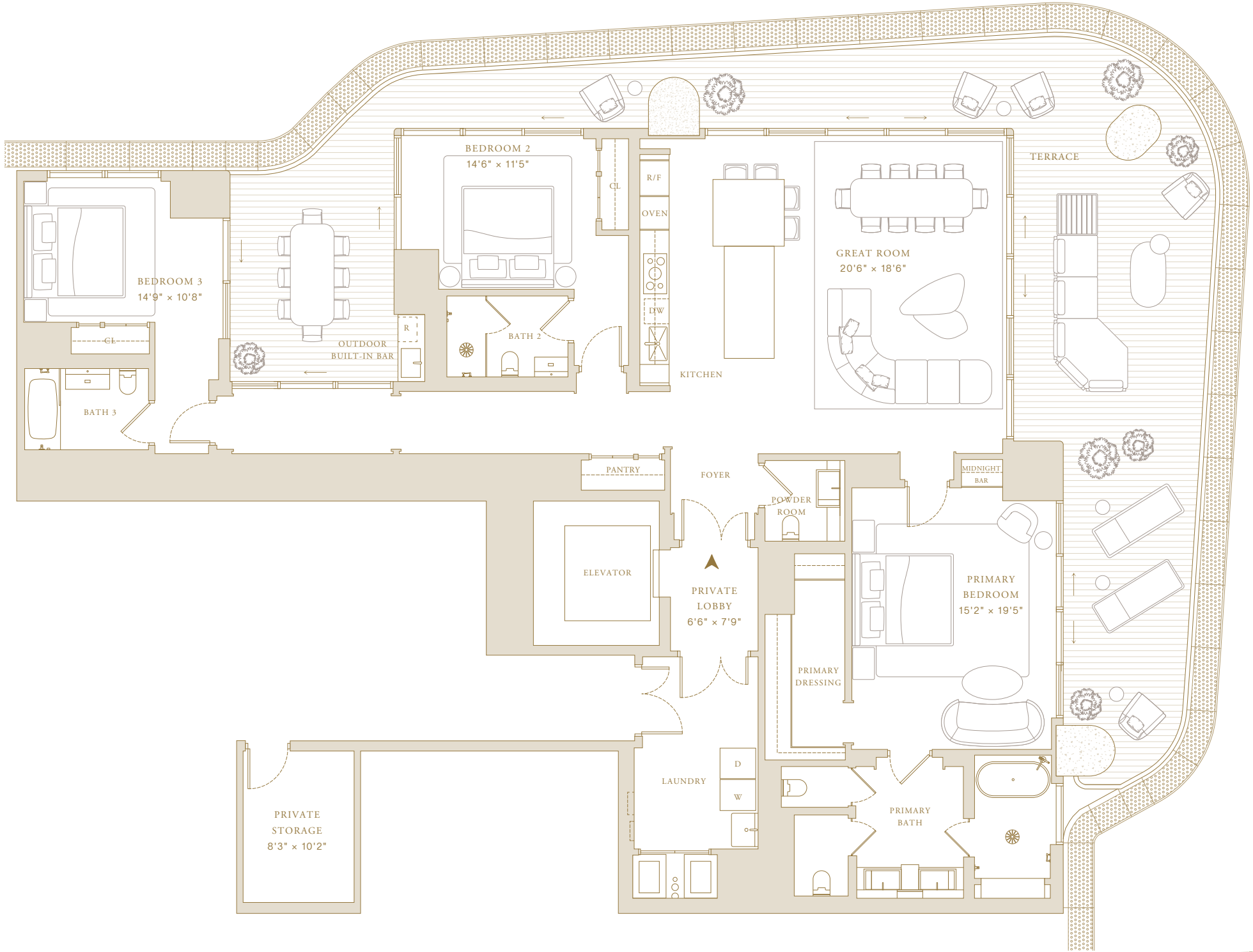
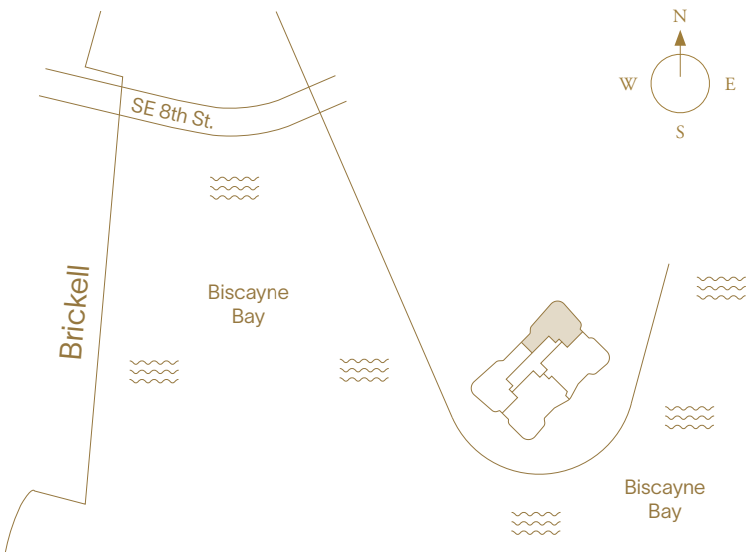
Levels 33–46

3 Bedrooms  
3 Bathrooms  
Powder Room

Indoor Area  
2,642 SF (245 SM)

Features

- Private Elevator and Entry Foyer
- Double Door Entry
- Molteni Kitchens with Gaggenau appliances
- Primary Closets Designed by Tristan Auer
- Midnight Bar
- Private Storage
- Laundry Room
- Expansive Terrace
- Outdoor Built-in Bar
- Courtyard Entertainment



This project is being developed by affiliates of 50A Developer LLC, a Delaware limited liability company ("Developer"), which has a limited right to use the trademarked names and logos of Swire Properties and Mandarin Oriental Hotel Group. The Residences at Mandarin Oriental, Miami ("The Residences") are not developed, sponsored, owned, offered or sold by Mandarin Oriental Hotel Group or any affiliate thereof (MOHG), and MOHG makes no representation, warranty or guaranty of any kind regarding The Residences. Developer and owners of The Residences use the Mandarin Oriental name and trademarks subject to the terms of revocable licenses from MOHG which may expire or be terminated. ORAL REPRESENTATIONS CANNOT BE RELIED UPON AS CORRECTLY STATING THE REPRESENTATIONS OF THE DEVELOPER. FOR CORRECT REPRESENTATIONS, MAKE REFERENCE TO THIS WEBSITE AND TO THE DOCUMENTS REQUIRED BY SECTION 718.503, FLORIDA STATUTES, TO BE FURNISHED BY A DEVELOPER TO A BUYER OR LESSEE. Stated square footages and dimensions are measured to the exterior boundaries of the exterior walls and the centerline of interior demising walls and in fact vary from the square footage and dimensions that would be determined by using the description and definition of the "Unit" set forth in the Declaration (which generally only includes the interior airspace between the perimeter walls and excludes all interior structural components and other common elements). This method is generally used in sales materials and is provided to allow a prospective buyer to compare the Units with units in other condominium projects that utilize the same method. Measurements of rooms set forth on this floor plan are generally taken at the farthest points of each given room (as if the room were a perfect rectangle), without regard for any cutouts or variations. Accordingly, the area of the actual room will typically be smaller than the product obtained by multiplying the stated length and width. All dimensions are estimates which will vary with actual construction, and all floor plans, specifications and other development plans are subject to change and will not necessarily accurately reflect the final plans and specifications for The Residences. Prices, features, amenities and other descriptions are preliminary and are subject to change without notice, as provided in your purchase agreement. The project graphics, renderings and text provided herein are copyrighted works owned by the Developer. All rights reserved. Unauthorized reproduction, display or other dissemination of such materials is strictly prohibited and constitutes copyright infringement.



South Tower—Collection III

# Residence 01

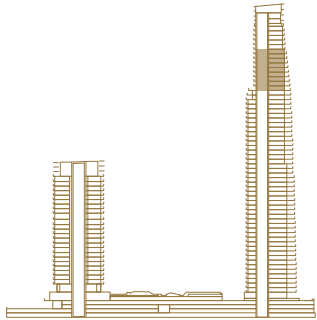
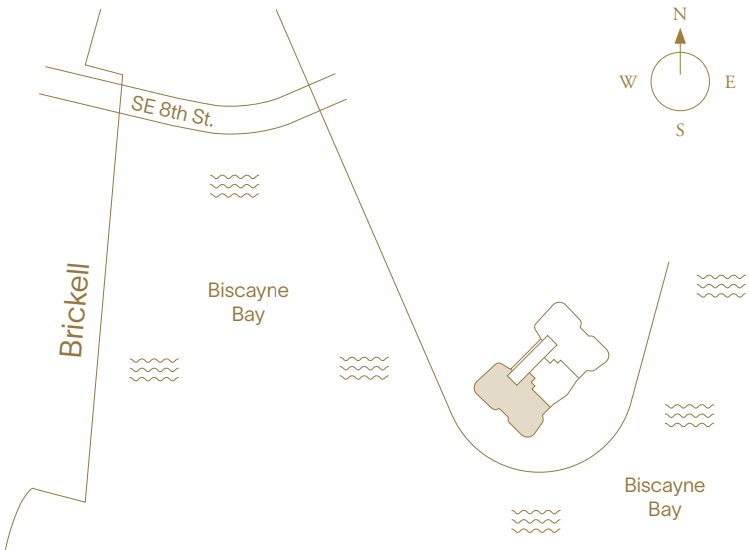
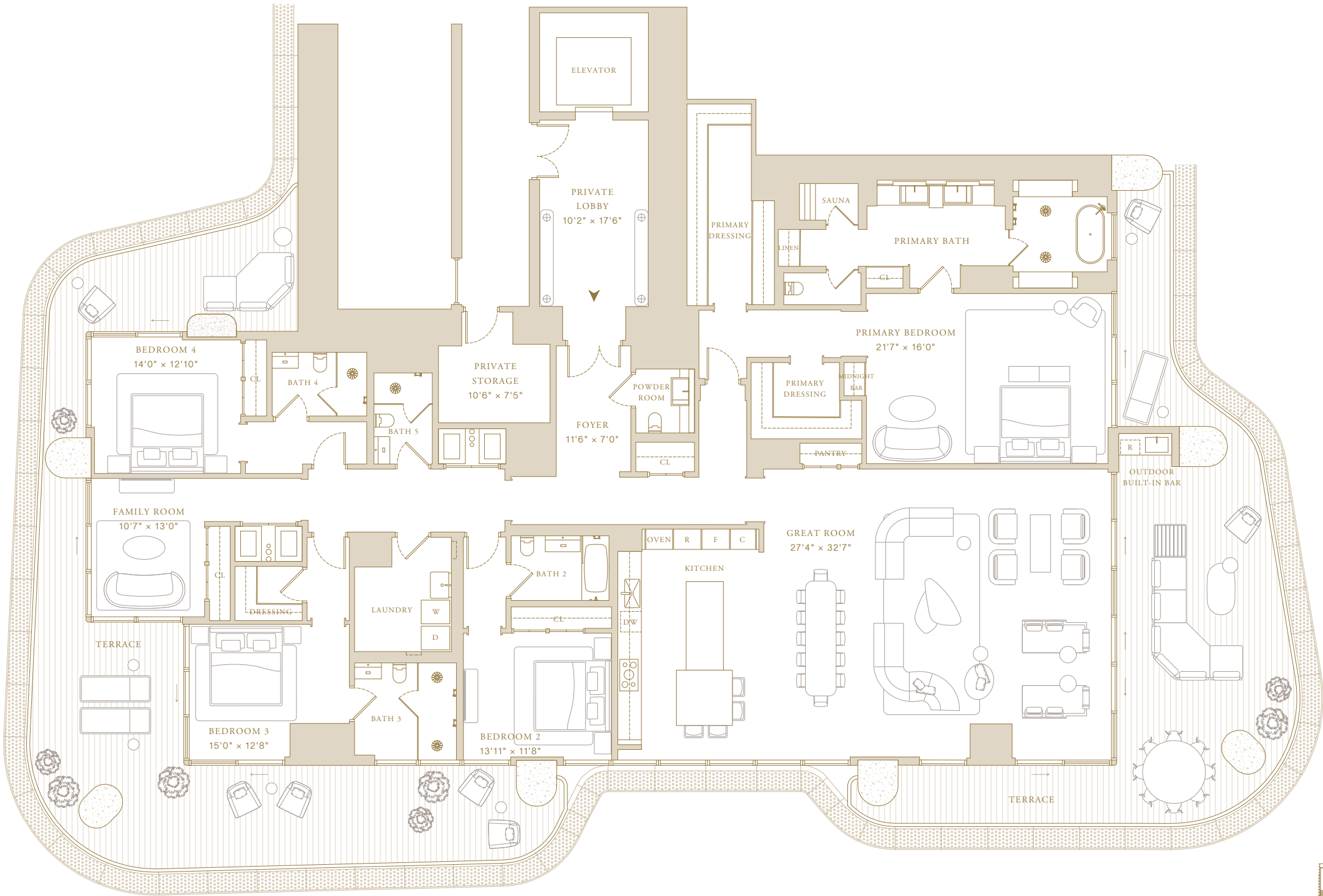
Levels 49–57

4 Bedrooms + Family Room  
5 Bathrooms  
Powder Room

Indoor Area  
4,646 SF (432 SM)

### Features

- Private Elevator and Entry Foyer
- Double Door Entry
- Molteni Kitchens with Gaggenau Appliances
- Primary Closets Designed by Tristan Auer
- Private Storage Adjacent to Storage
- Sauna
- Midnight Bar
- Pantry
- Laundry Room
- Expansive Terraces
- Outdoor Built-in Bar



 **SWIRE PROPERTIES**



This project is being developed by affiliates of 50A Developer LLC, a Delaware limited liability company ("Developer"), which has a limited right to use the trademarked names and logos of Swire Properties and Mandarin Oriental Hotel Group. The Residences at Mandarin Oriental, Miami ("The Residences") are not developed, sponsored, owned, offered or sold by Mandarin Oriental Hotel Group or any affiliate thereof (MOHG), and MOHG makes no representation, warranty or guaranty of any kind regarding The Residences. Developer and owners of The Residences use the Mandarin Oriental name and trademarks subject to the terms of revocable licenses from MOHG which may expire or be terminated. ORAL REPRESENTATIONS CANNOT BE RELIED UPON AS CORRECTLY STATING THE REPRESENTATIONS OF THE DEVELOPER. FOR CORRECT REPRESENTATIONS, MAKE REFERENCE TO THIS WEBSITE AND TO THE DOCUMENTS REQUIRED BY SECTION 718.503, FLORIDA STATUTES, TO BE FURNISHED BY A DEVELOPER TO A BUYER OR LESSEE. Stated square footages and dimensions are measured to the exterior boundaries of the exterior walls and the centerline of interior demising walls and in fact vary from the square footage and dimensions that would be determined by using the description and definition of the "Unit" set forth in the Declaration (which generally only includes the interior airspace between the perimeter walls and excludes all interior structural components and other common elements). This method is generally used in sales materials and is provided to allow a prospective buyer to compare the Units with units in other condominium projects that utilize the same method. Measurements of rooms set forth on this floor plan are generally taken at the farthest points of each given room (as if the room were a perfect rectangle), without regard for any cutouts or variations. Accordingly, the area of the actual room will typically be smaller than the product obtained by multiplying the stated length and width. All dimensions are estimates which will vary with actual construction, and all floor plans, specifications and other development plans are subject to change and will not necessarily accurately reflect the final plans and specifications for The Residences. Prices, features, amenities and other descriptions are preliminary and are subject to change without notice, as provided in your purchase agreement. The project graphics, renderings and text provided herein are copyrighted works owned by the Developer. All rights reserved. Unauthorized reproduction, display or other dissemination of such materials is strictly prohibited and constitutes copyright infringement.



South Tower—Collection III

# Residence 02

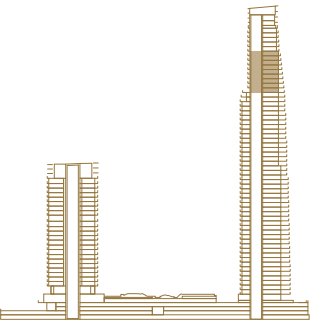
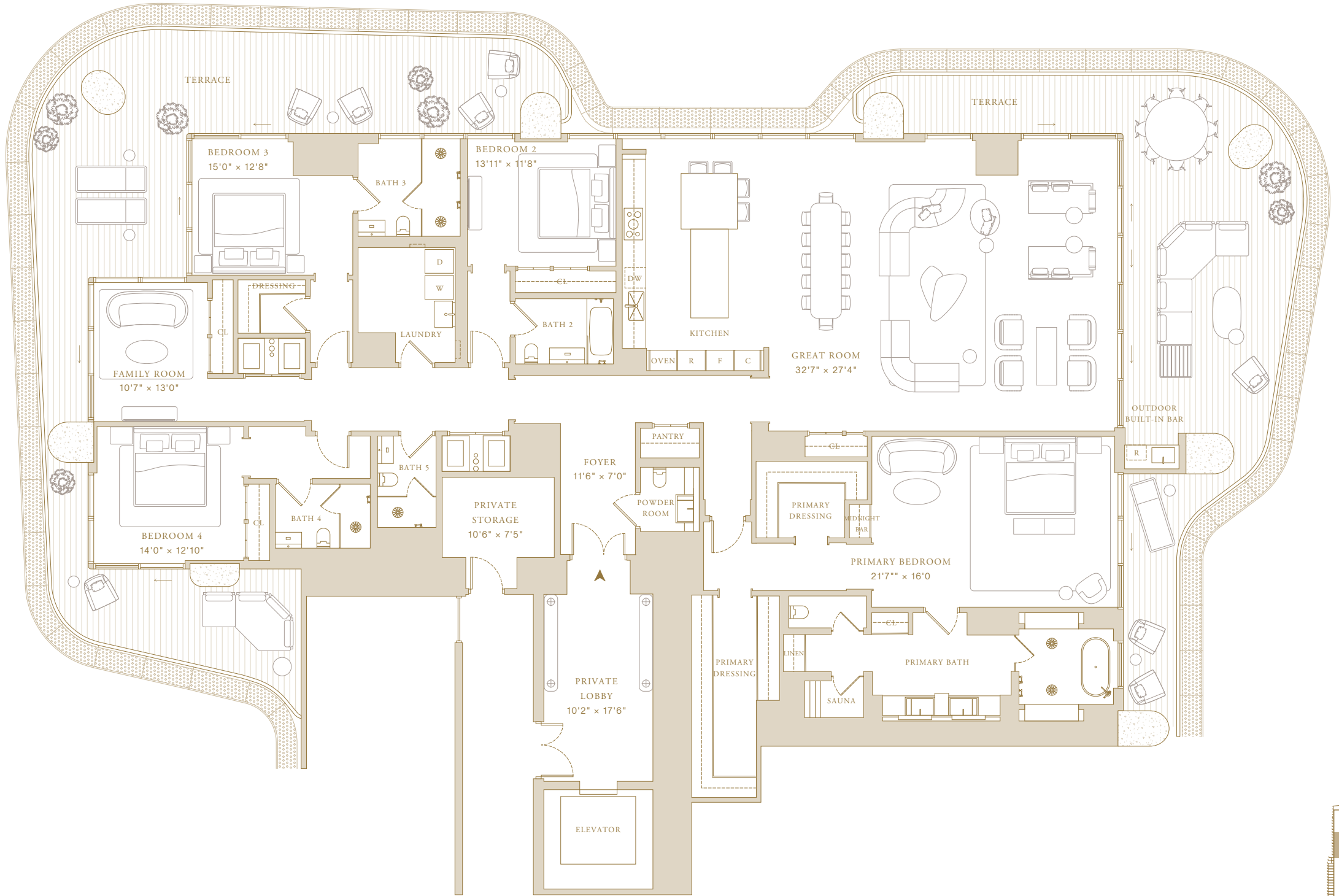
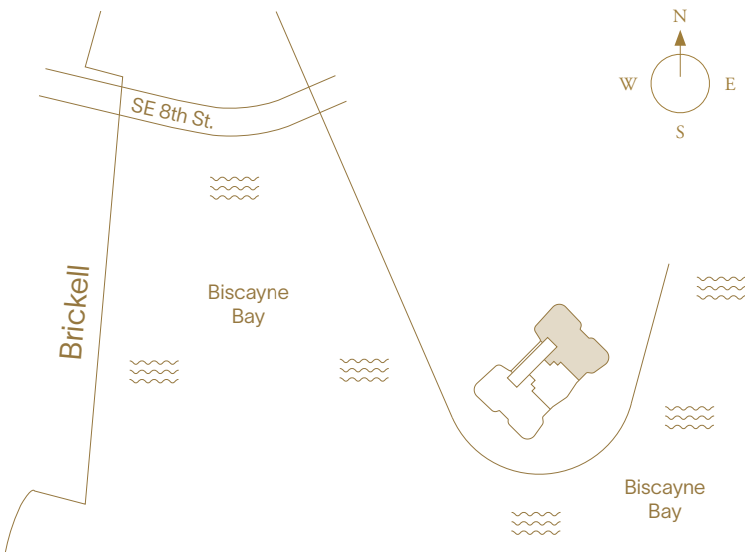
Levels 49–57

4 Bedrooms + Family Room  
5 Bathrooms  
Powder Room

Indoor Area  
4,646 SF (432 SM)

Features

- Private Elevator and Entry Foyer
- Double Door Entry
- Molteni Kitchens with Gaggenau Appliances
- Primary Closets Designed by Tristan Auer
- Private Storage Adjacent to Storage
- Sauna
- Midnight Bar
- Pantry
- Laundry Room
- Expansive Terraces
- Outdoor Built-in Bar



This project is being developed by affiliates of 50A Developer LLC, a Delaware limited liability company ("Developer"), which has a limited right to use the trademarked names and logos of Swire Properties and Mandarin Oriental Hotel Group. The Residences at Mandarin Oriental, Miami ("The Residences") are not developed, sponsored, owned, offered or sold by Mandarin Oriental Hotel Group or any affiliate thereof (MOHG), and MOHG makes no representation, warranty or guaranty of any kind regarding The Residences. Developer and owners of The Residences use the Mandarin Oriental name and trademarks subject to the terms of revocable licenses from MOHG which may expire or be terminated. ORAL REPRESENTATIONS CANNOT BE RELIED UPON AS CORRECTLY STATING THE REPRESENTATIONS OF THE DEVELOPER. FOR CORRECT REPRESENTATIONS, MAKE REFERENCE TO THIS WEBSITE AND TO THE DOCUMENTS REQUIRED BY SECTION 718.503, FLORIDA STATUTES, TO BE FURNISHED BY A DEVELOPER TO A BUYER OR LESSEE. Stated square footages and dimensions are measured to the exterior boundaries of the exterior walls and the centerline of interior demising walls and in fact vary from the square footage and dimensions that would be determined by using the description and definition of the "Unit" set forth in the Declaration (which generally only includes the interior airspace between the perimeter walls and excludes all interior structural components and other common elements). This method is generally used in sales materials and is provided to allow a prospective buyer to compare the Units with units in other condominium projects that utilize the same method. Measurements of rooms set forth on this floor plan are generally taken at the farthest points of each given room (as if the room were a perfect rectangle), without regard for any cutouts or variations. Accordingly, the area of the actual room will typically be smaller than the product obtained by multiplying the stated length and width. All dimensions are estimates which will vary with actual construction, and all floor plans, specifications and other development plans are subject to change and will not necessarily accurately reflect the final plans and specifications for The Residences. Prices, features, amenities and other descriptions are preliminary and are subject to change without notice, as provided in your purchase agreement. The project graphics, renderings and text provided herein are copyrighted works owned by the Developer. All rights reserved. Unauthorized reproduction, display or other dissemination of such materials is strictly prohibited and constitutes copyright infringement.



South Tower—Collection III

# Residence 03

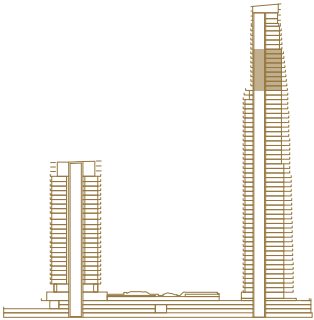
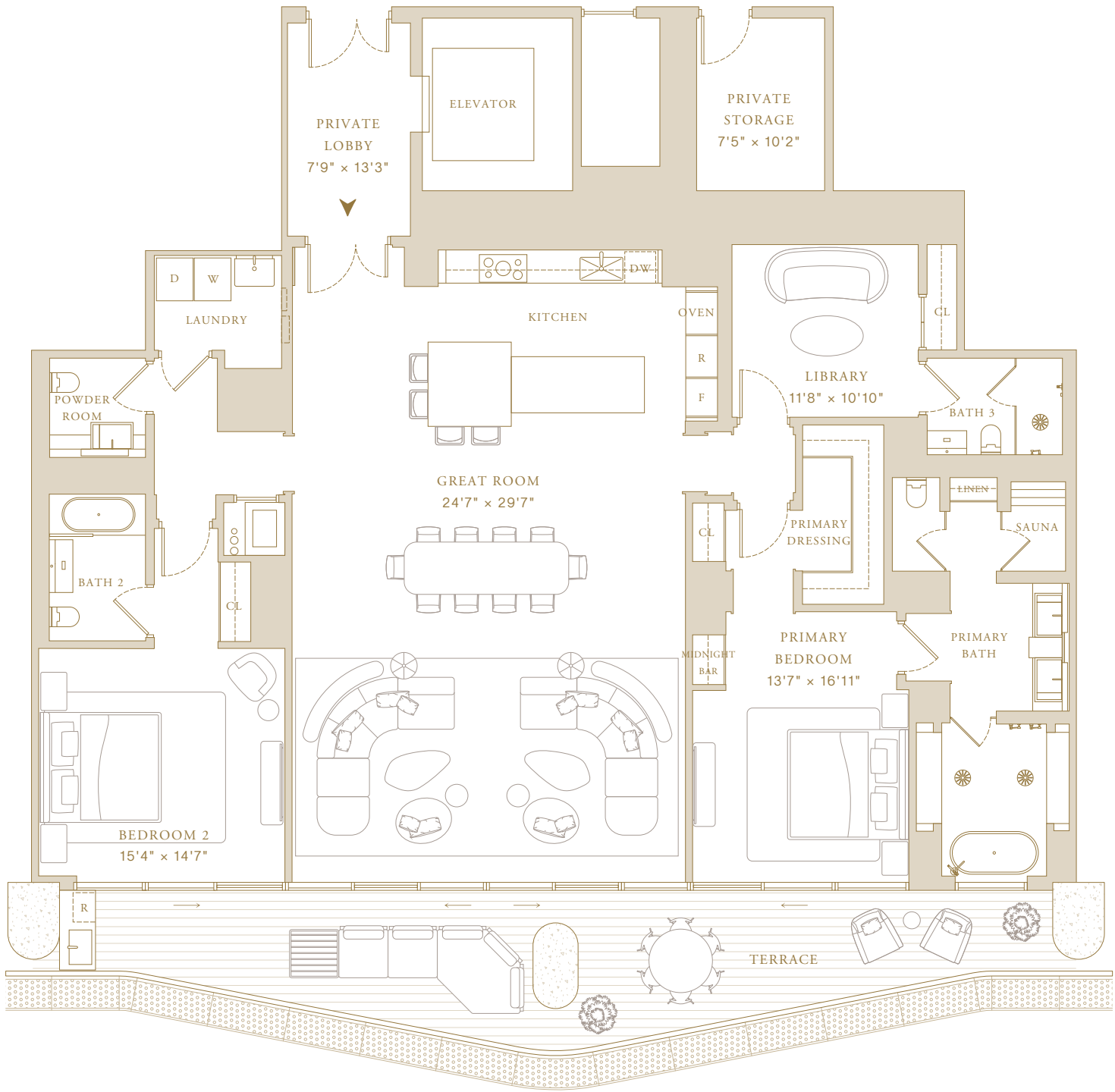
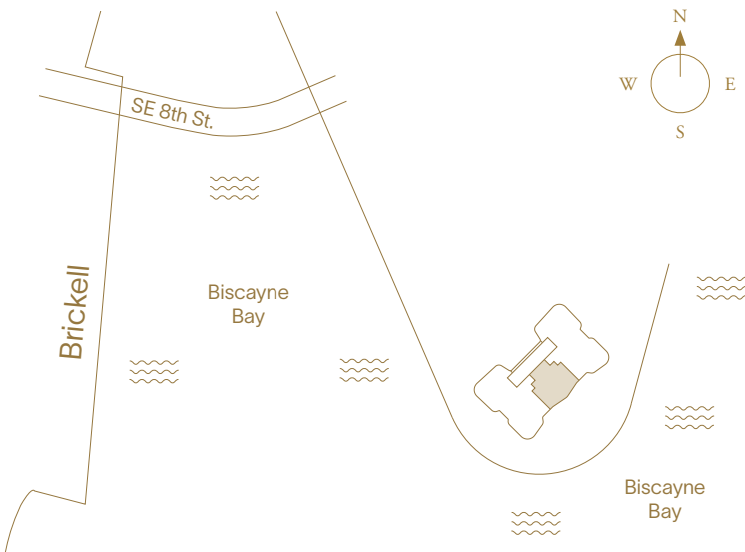
Levels 48–57

2 Bedrooms + Library  
3 Bathrooms  
Powder Room

Indoor Area  
2,738 SF (254 SM)

Features

- Private Elevator and Entry Foyer
- Double Door Entry
- Molteni Kitchens with Gaggenau Appliances
- Primary Closets Designed by Tristan Auer
- Private Storage Adjacent to Storage
- Sauna
- Midnight Bar
- Pantry
- Laundry Room
- Expansive Terraces
- Outdoor Built-in Bar



This project is being developed by affiliates of 50A Developer LLC, a Delaware limited liability company ("Developer"), which has a limited right to use the trademarked names and logos of Swire Properties and Mandarin Oriental Hotel Group. The Residences at Mandarin Oriental, Miami ("The Residences") are not developed, sponsored, owned, offered or sold by Mandarin Oriental Hotel Group or any affiliate thereof (MOHG), and MOHG makes no representation, warranty or guaranty of any kind regarding The Residences. Developer and owners of The Residences use the Mandarin Oriental name and trademarks subject to the terms of revocable licenses from MOHG which may expire or be terminated. ORAL REPRESENTATIONS CANNOT BE RELIED UPON AS CORRECTLY STATING THE REPRESENTATIONS OF THE DEVELOPER. FOR CORRECT REPRESENTATIONS, MAKE REFERENCE TO THIS WEBSITE AND TO THE DOCUMENTS REQUIRED BY SECTION 718.503, FLORIDA STATUTES, TO BE FURNISHED BY A DEVELOPER TO A BUYER OR LESSEE. Stated square footages and dimensions are measured to the exterior boundaries of the exterior walls and the centerline of interior demising walls and in fact vary from the square footage and dimensions that would be determined by using the description and definition of the "Unit" set forth in the Declaration (which generally only includes the interior airspace between the perimeter walls and excludes all interior structural components and other common elements). This method is generally used in sales materials and is provided to allow a prospective buyer to compare the Units with units in other condominium projects that utilize the same method. Measurements of rooms set forth on this floor plan are generally taken at the farthest points of each given room (as if the room were a perfect rectangle), without regard for any cutouts or variations. Accordingly, the area of the actual room will typically be smaller than the product obtained by multiplying the stated length and width. All dimensions are estimates which will vary with actual construction, and all floor plans, specifications and other development plans are subject to change and will not necessarily accurately reflect the final plans and specifications for The Residences. Prices, features, amenities and other descriptions are preliminary and are subject to change without notice, as provided in your purchase agreement. The project graphics, renderings and text provided herein are copyrighted works owned by the Developer. All rights reserved. Unauthorized reproduction, display or other dissemination of such materials is strictly prohibited and constitutes copyright infringement.





South Tower—Collection IV

# Residence 01

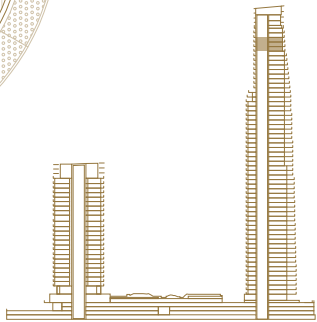
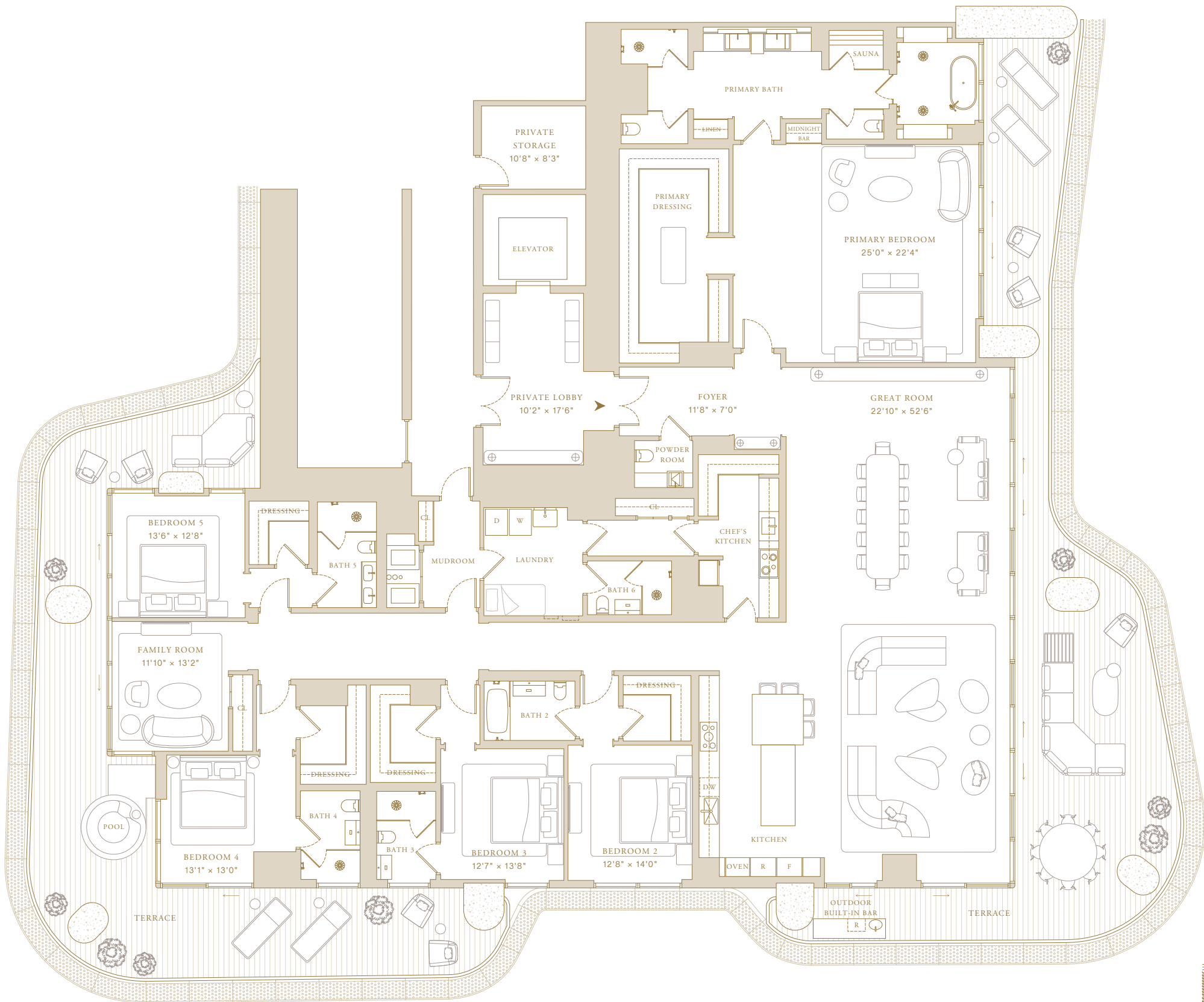
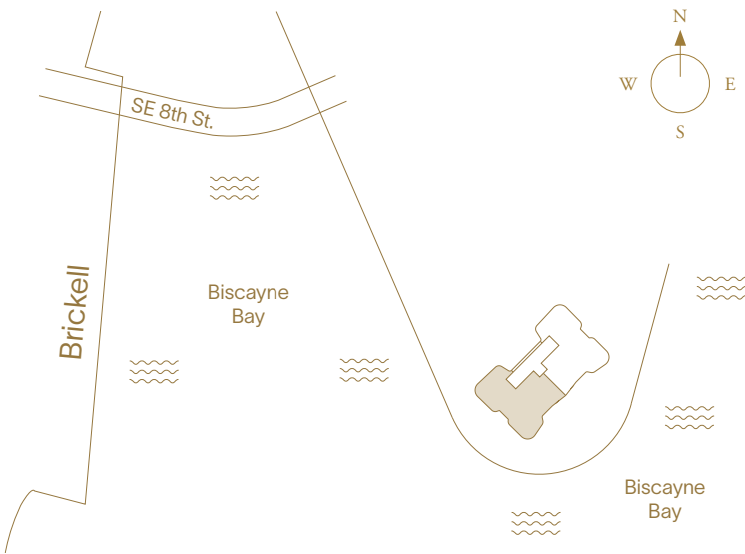
Levels 58–60

5 Bedrooms + Family Room  
6 Bathrooms  
Powder Room

Indoor Area  
5,840 SF (543 SM)

### Features

- Private Elevator and Entry Foyer
- Double Door Entry
- Molteni Kitchens with Gaggenau Appliances
- Chef’s Kitchen
- Primary Closets Designed by Tristan Auer
- Sauna
- Midnight Bar
- Laundry Room
- En-suite Staff Quarters
- Private Storage Adjacent to Residence
- Expansive Terraces
- Outdoor Built-in Bar
- Private Plunge Pool



This project is being developed by affiliates of 50A Developer LLC, a Delaware limited liability company ("Developer"), which has a limited right to use the trademarked names and logos of Swire Properties and Mandarin Oriental Hotel Group. The Residences at Mandarin Oriental, Miami ("The Residences") are not developed, sponsored, owned, offered or sold by Mandarin Oriental Hotel Group or any affiliate thereof (MOHG), and MOHG makes no representation, warranty or guaranty of any kind regarding The Residences. Developer and owners of The Residences use the Mandarin Oriental name and trademarks subject to the terms of revocable licenses from MOHG which may expire or be terminated. ORAL REPRESENTATIONS CANNOT BE RELIED UPON AS CORRECTLY STATING THE REPRESENTATIONS OF THE DEVELOPER. FOR CORRECT REPRESENTATIONS, MAKE REFERENCE TO THIS WEBSITE AND TO THE DOCUMENTS REQUIRED BY SECTION 718.503, FLORIDA STATUTES, TO BE FURNISHED BY A DEVELOPER TO A BUYER OR LESSEE. Stated square footages and dimensions are measured to the exterior boundaries of the exterior walls and the centerline of interior demising walls and in fact vary from the square footage and dimensions that would be determined by using the description and definition of the "Unit" set forth in the Declaration (which generally only includes the interior airspace between the perimeter walls and excludes all interior structural components and other common elements). This method is generally used in sales materials and is provided to allow a prospective buyer to compare the Units with units in other condominium projects that utilize the same method. Measurements of rooms set forth on this floor plan are generally taken at the farthest points of each given room (as if the room were a perfect rectangle), without regard for any cutouts or variations. Accordingly, the area of the actual room will typically be smaller than the product obtained by multiplying the stated length and width. All dimensions are estimates which will vary with actual construction, and all floor plans, specifications and other development plans are subject to change and will not necessarily accurately reflect the final plans and specifications for The Residences. Prices, features, amenities and other descriptions are preliminary and are subject to change without notice, as provided in your purchase agreement. The project graphics, renderings and text provided herein are copyrighted works owned by the Developer. All rights reserved. Unauthorized reproduction, display or other dissemination of such materials is strictly prohibited and constitutes copyright infringement.





South Tower—Collection IV

# Residence 01

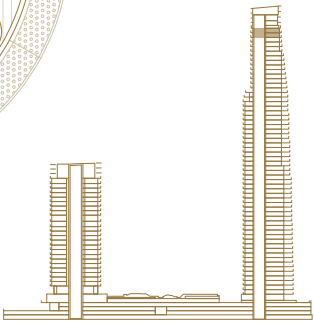
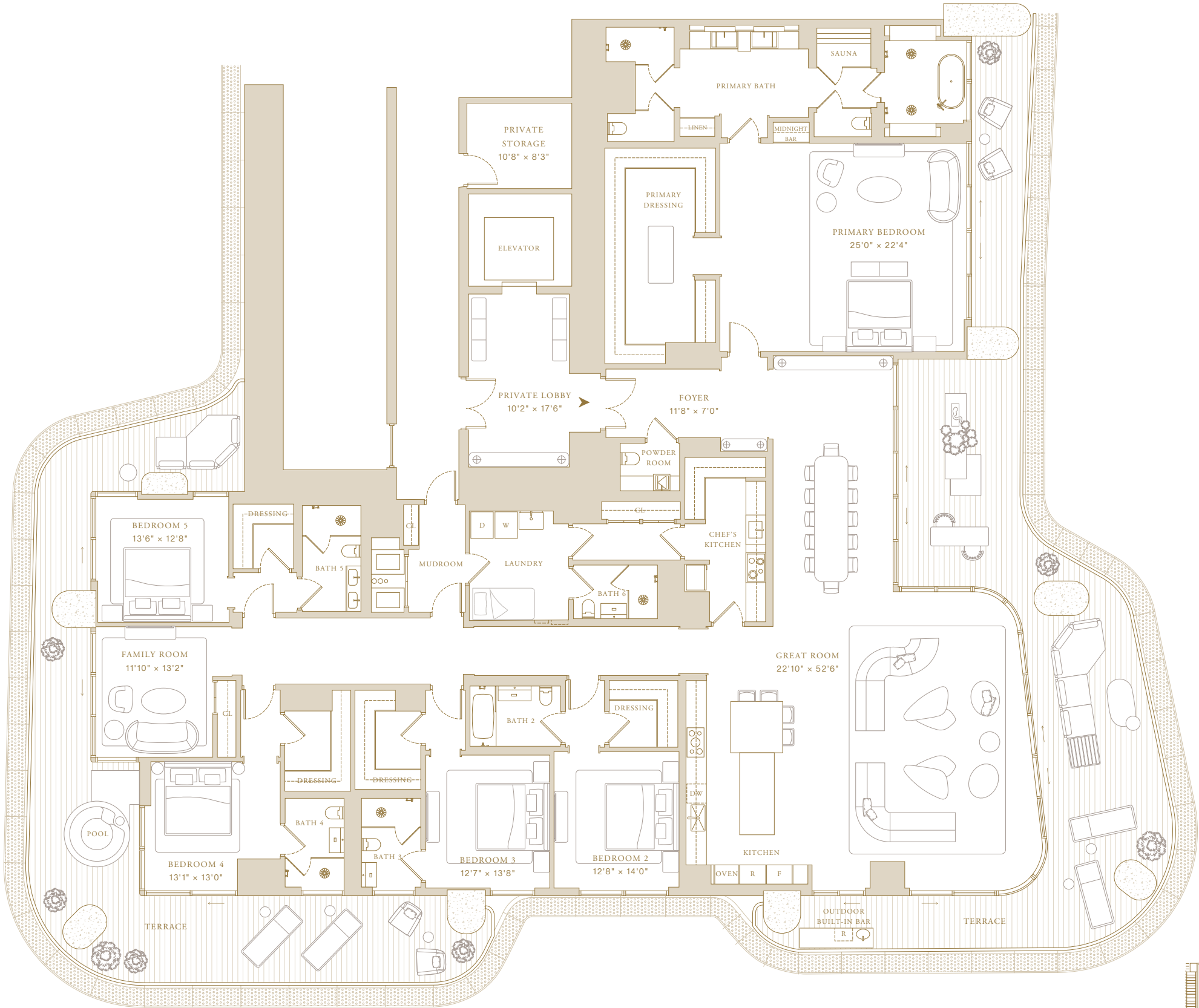
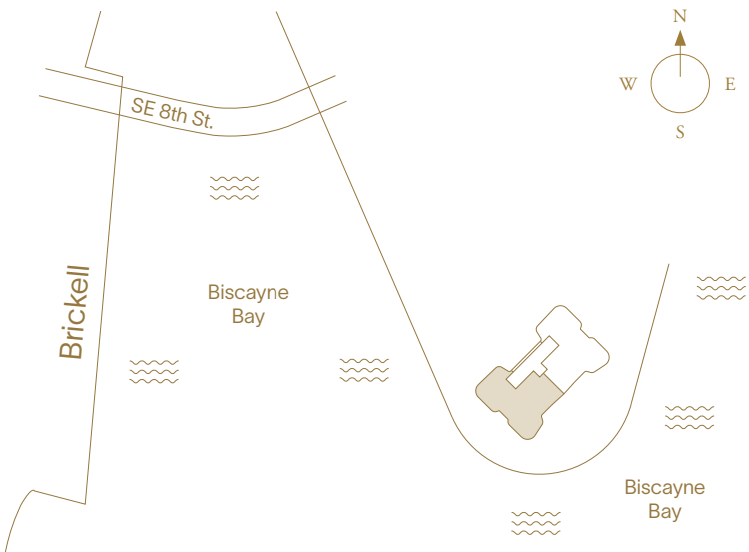
Levels 61–62

5 Bedrooms + Family Room  
6 Bathrooms  
Powder Room

Indoor Area  
5,681 SF (528 SM)

### Features

- Private Elevator and Entry Foyer
- Double Door Entry
- Molteni Kitchens with Gaggenau Appliances
- Chef’s Kitchen
- Primary Closets Designed by Tristan Auer
- Sauna
- Midnight Bar
- Laundry Room
- En-suite Staff Quarters
- Private Storage Adjacent to Residence
- Expansive Terraces
- Outdoor Built-in Bar
- Private Plunge Pool



This project is being developed by affiliates of 50A Developer LLC, a Delaware limited liability company ("Developer"), which has a limited right to use the trademarked names and logos of Swire Properties and Mandarin Oriental Hotel Group. The Residences at Mandarin Oriental, Miami ("The Residences") are not developed, sponsored, owned, offered or sold by Mandarin Oriental Hotel Group or any affiliate thereof (MOHG), and MOHG makes no representation, warranty or guaranty of any kind regarding The Residences. Developer and owners of The Residences use the Mandarin Oriental name and trademarks subject to the terms of revocable licenses from MOHG which may expire or be terminated. ORAL REPRESENTATIONS CANNOT BE RELIED UPON AS CORRECTLY STATING THE REPRESENTATIONS OF THE DEVELOPER. FOR CORRECT REPRESENTATIONS, MAKE REFERENCE TO THIS WEBSITE AND TO THE DOCUMENTS REQUIRED BY SECTION 718.503, FLORIDA STATUTES, TO BE FURNISHED BY A DEVELOPER TO A BUYER OR LESSEE. Stated square footages and dimensions are measured to the exterior boundaries of the exterior walls and the centerline of interior demising walls and in fact vary from the square footage and dimensions that would be determined by using the description and definition of the "Unit" set forth in the Declaration (which generally only includes the interior airspace between the perimeter walls and excludes all interior structural components and other common elements). This method is generally used in sales materials and is provided to allow a prospective buyer to compare the Units with units in other condominium projects that utilize the same method. Measurements of rooms set forth on this floor plan are generally taken at the farthest points of each given room (as if the room were a perfect rectangle), without regard for any cutouts or variations. Accordingly, the area of the actual room will typically be smaller than the product obtained by multiplying the stated length and width. All dimensions are estimates which will vary with actual construction, and all floor plans, specifications and other development plans are subject to change and will not necessarily accurately reflect the final plans and specifications for The Residences. Prices, features, amenities and other descriptions are preliminary and are subject to change without notice, as provided in your purchase agreement. The project graphics, renderings and text provided herein are copyrighted works owned by the Developer. All rights reserved. Unauthorized reproduction, display or other dissemination of such materials is strictly prohibited and constitutes copyright infringement.



South Tower—Collection IV

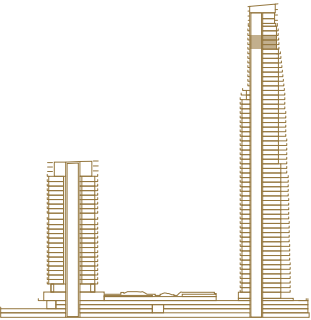
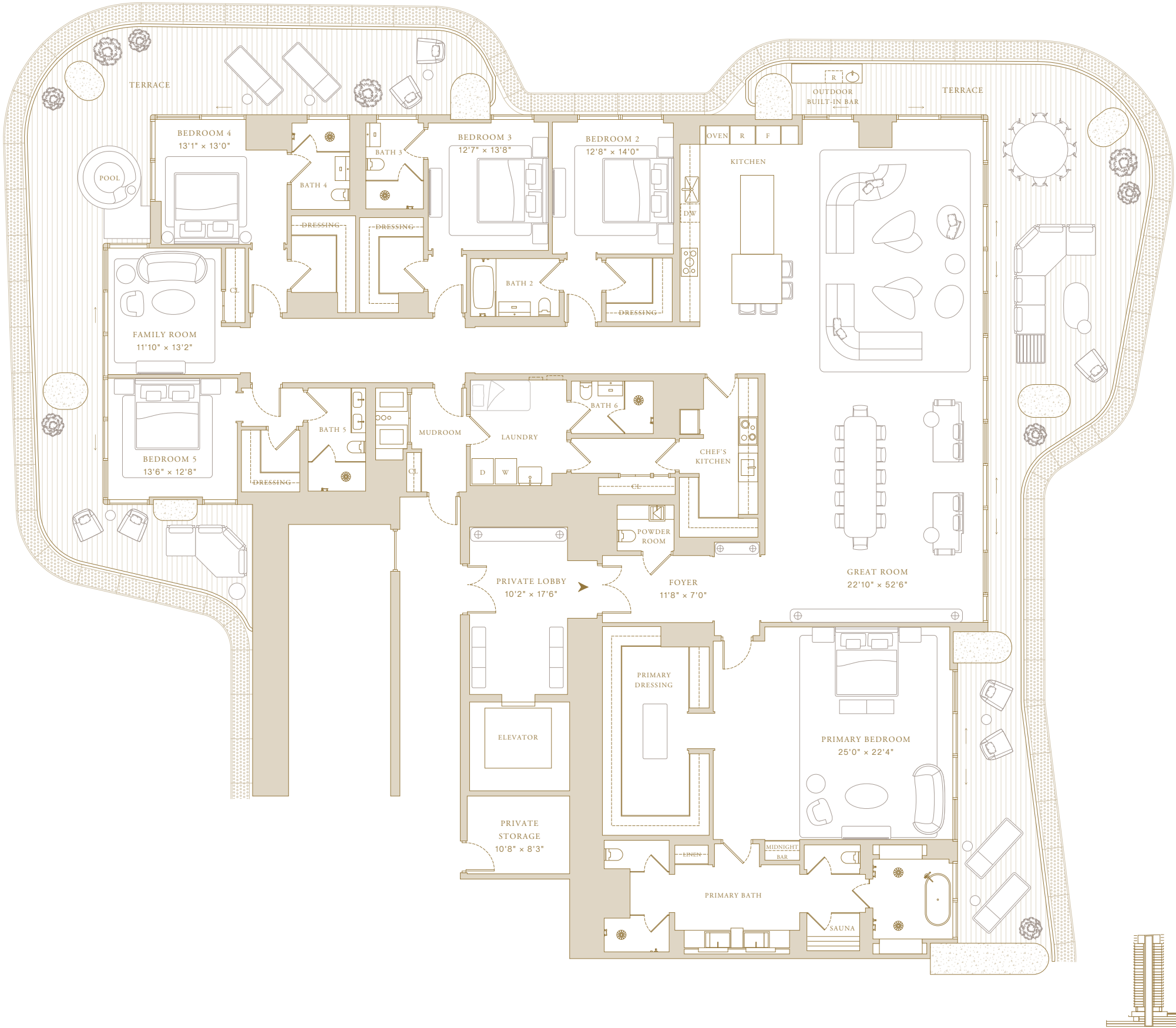
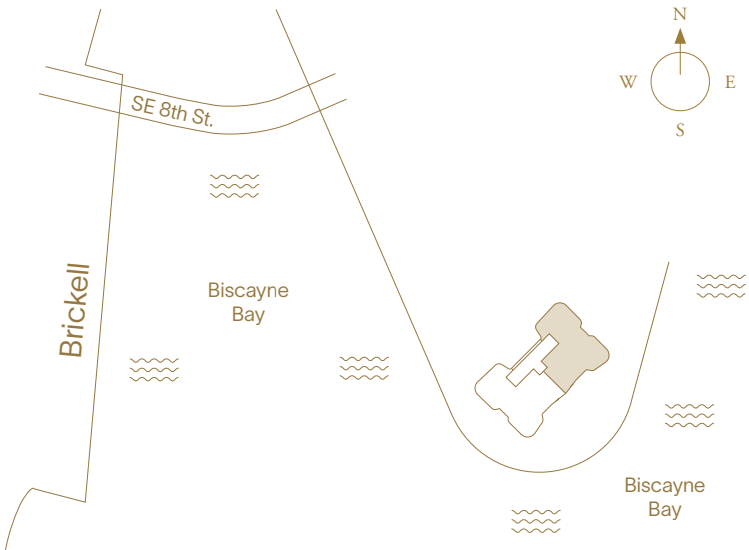
# Residence 02

Levels 58–60

5 Bedrooms + Family Room  
6 Bathrooms  
Powder Room

Indoor Area  
5,840 SF (543 SM)

- Features
- Private Elevator and Entry Foyer
  - Double Door Entry
  - Molteni Kitchens with Gaggenau Appliances
  - Chef’s Kitchen
  - Primary Closets Designed by Tristan Auer
  - Sauna
  - Midnight Bar
  - Laundry Room
  - En-suite Staff Quarters
  - Private Storage Adjacent to Residence
  - Expansive Terraces
  - Outdoor Built-in Bar
  - Private Plunge Pool



SWIRE PROPERTIES



This project is being developed by affiliates of 50A Developer LLC, a Delaware limited liability company ("Developer"), which has a limited right to use the trademarked names and logos of Swire Properties and Mandarin Oriental Hotel Group. The Residences at Mandarin Oriental, Miami ("The Residences") are not developed, sponsored, owned, offered or sold by Mandarin Oriental Hotel Group or any affiliate thereof (MOHG), and MOHG makes no representation, warranty or guaranty of any kind regarding The Residences. Developer and owners of The Residences use the Mandarin Oriental name and trademarks subject to the terms of revocable licenses from MOHG which may expire or be terminated. ORAL REPRESENTATIONS CANNOT BE RELIED UPON AS CORRECTLY STATING THE REPRESENTATIONS OF THE DEVELOPER. FOR CORRECT REPRESENTATIONS, MAKE REFERENCE TO THIS WEBSITE AND TO THE DOCUMENTS REQUIRED BY SECTION 718.503, FLORIDA STATUTES, TO BE FURNISHED BY A DEVELOPER TO A BUYER OR LESSEE. Stated square footages and dimensions are measured to the exterior boundaries of the exterior walls and the centerline of interior demising walls and in fact vary from the square footage and dimensions that would be determined by using the description and definition of the "Unit" set forth in the Declaration (which generally only includes the interior airspace between the perimeter walls and excludes all interior structural components and other common elements). This method is generally used in sales materials and is provided to allow a prospective buyer to compare the Units with units in other condominium projects that utilize the same method. Measurements of rooms set forth on this floor plan are generally taken at the farthest points of each given room (as if the room were a perfect rectangle), without regard for any cutouts or variations. Accordingly, the area of the actual room will typically be smaller than the product obtained by multiplying the stated length and width. All dimensions are estimates which will vary with actual construction, and all floor plans, specifications and other development plans are subject to change and will not necessarily accurately reflect the final plans and specifications for The Residences. Prices, features, amenities and other descriptions are preliminary and are subject to change without notice, as provided in your purchase agreement. The project graphics, renderings and text provided herein are copyrighted works owned by the Developer. All rights reserved. Unauthorized reproduction, display or other dissemination of such materials is strictly prohibited and constitutes copyright infringement.



South Tower—Collection IV

# Residence 02

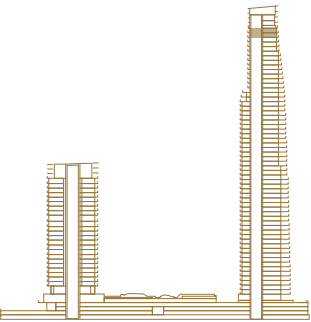
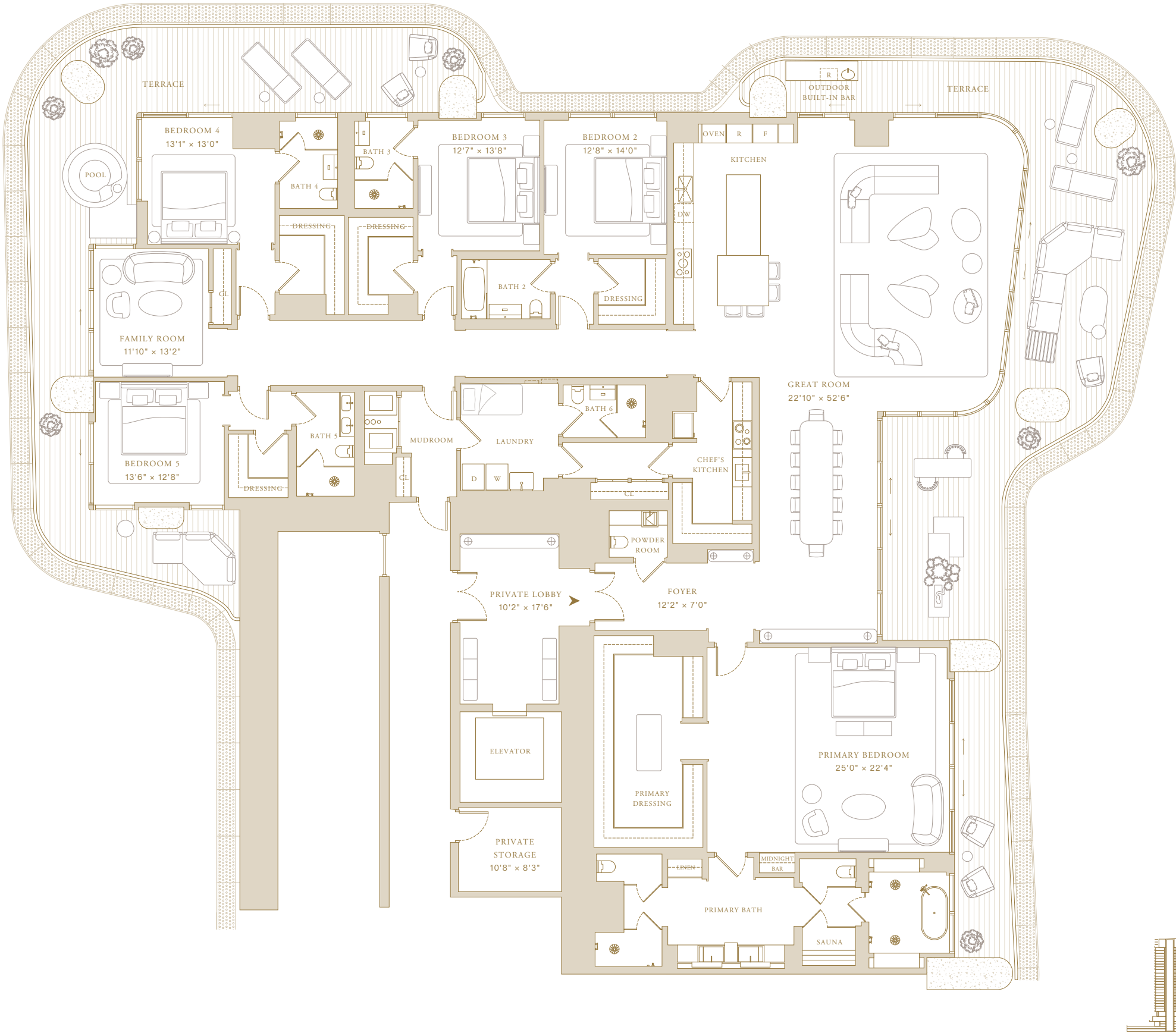
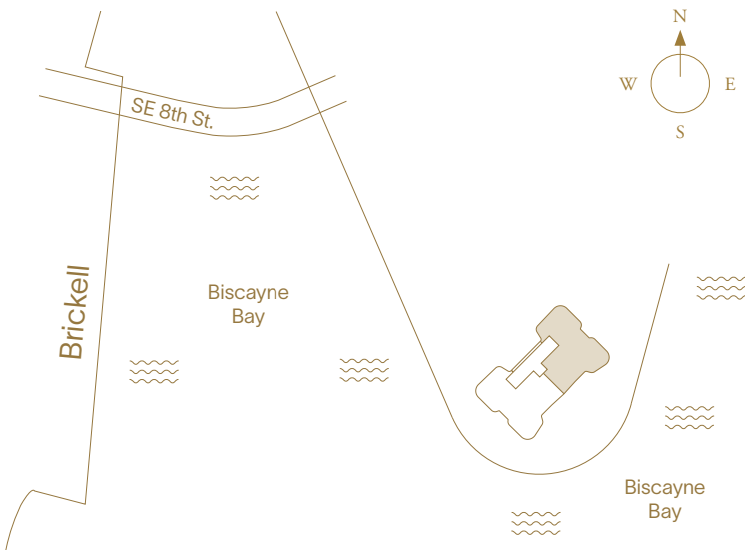
Levels 61–62

5 Bedrooms + Family Room  
6 Bathrooms  
Powder Room

Indoor Area  
5,681 SF (528 SM)

### Features

- Private Elevator and Entry Foyer
- Double Door Entry
- Molteni Kitchens with Gaggenau Appliances
- Chef’s Kitchen
- Primary Closets Designed by Tristan Auer
- Sauna
- Midnight Bar
- Laundry Room
- En-suite Staff Quarters
- Private Storage Adjacent to Residence
- Expansive Terraces
- Outdoor Built-in Bar
- Private Plunge Pool



This project is being developed by affiliates of 50A Developer LLC, a Delaware limited liability company ("Developer"), which has a limited right to use the trademarked names and logos of Swire Properties and Mandarin Oriental Hotel Group. The Residences at Mandarin Oriental, Miami ("The Residences") are not developed, sponsored, owned, offered or sold by Mandarin Oriental Hotel Group or any affiliate thereof (MOHG), and MOHG makes no representation, warranty or guaranty of any kind regarding The Residences. Developer and owners of The Residences use the Mandarin Oriental name and trademarks subject to the terms of revocable licenses from MOHG which may expire or be terminated. ORAL REPRESENTATIONS CANNOT BE RELIED UPON AS CORRECTLY STATING THE REPRESENTATIONS OF THE DEVELOPER. FOR CORRECT REPRESENTATIONS, MAKE REFERENCE TO THIS WEBSITE AND TO THE DOCUMENTS REQUIRED BY SECTION 718.503, FLORIDA STATUTES, TO BE FURNISHED BY A DEVELOPER TO A BUYER OR LESSEE. Stated square footages and dimensions are measured to the exterior boundaries of the exterior walls and the centerline of interior demising walls and in fact vary from the square footage and dimensions that would be determined by using the description and definition of the "Unit" set forth in the Declaration (which generally only includes the interior airspace between the perimeter walls and excludes all interior structural components and other common elements). This method is generally used in sales materials and is provided to allow a prospective buyer to compare the Units with units in other condominium projects that utilize the same method. Measurements of rooms set forth on this floor plan are generally taken at the farthest points of each given room (as if the room were a perfect rectangle), without regard for any cutouts or variations. Accordingly, the area of the actual room will typically be smaller than the product obtained by multiplying the stated length and width. All dimensions are estimates which will vary with actual construction, and all floor plans, specifications and other development plans are subject to change and will not necessarily accurately reflect the final plans and specifications for The Residences. Prices, features, amenities and other descriptions are preliminary and are subject to change without notice, as provided in your purchase agreement. The project graphics, renderings and text provided herein are copyrighted works owned by the Developer. All rights reserved. Unauthorized reproduction, display or other dissemination of such materials is strictly prohibited and constitutes copyright infringement.