



THE RITZ-CARLTON RESIDENCES

HAMMOCK DUNES, PALM COAST

Unit 01

4 Bedrooms | 4.5 Bathrooms | Family Room

Total Interior 3,400 SF | 315.9 m²

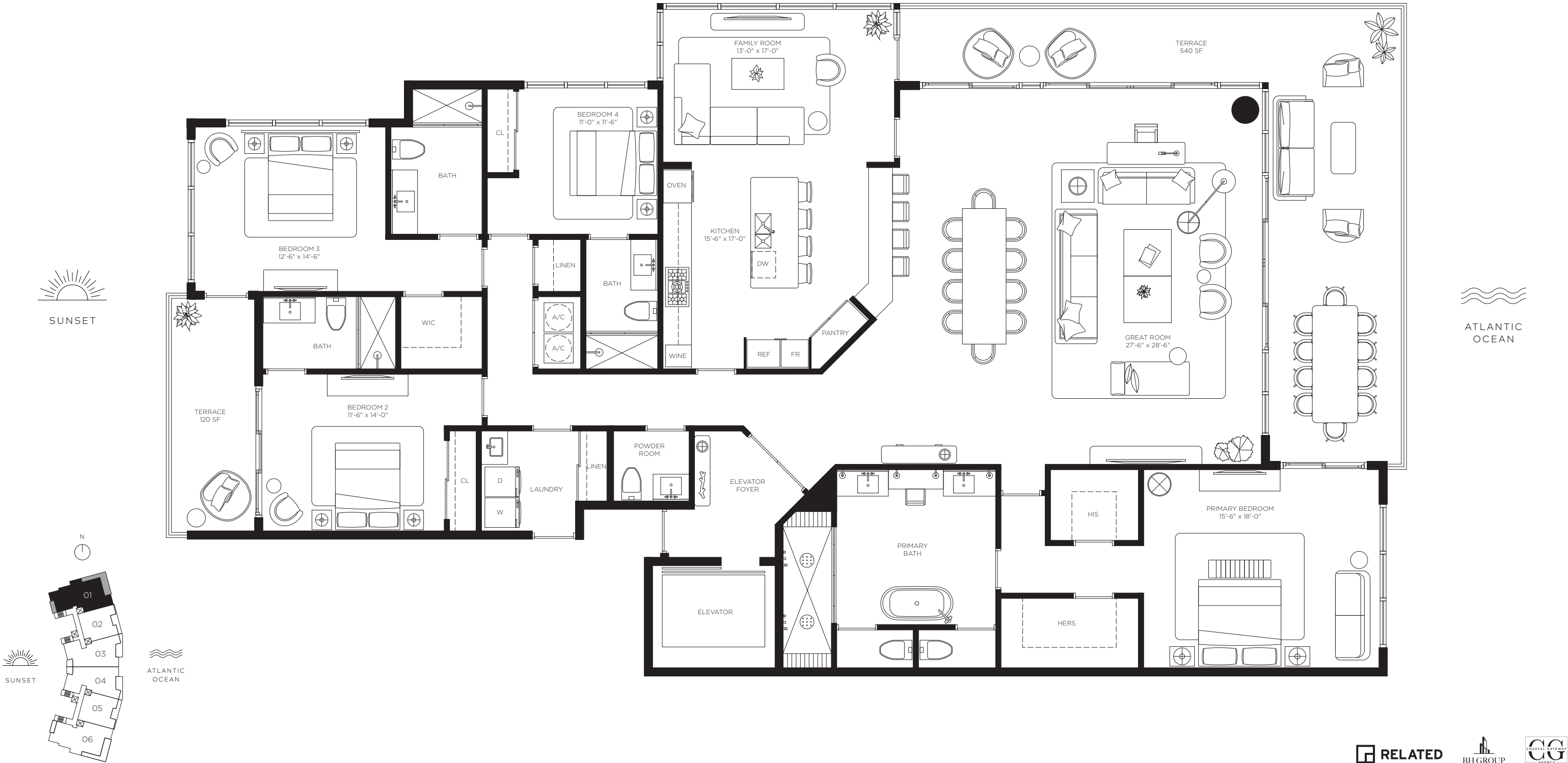
Unit 01


4 Bedrooms | 4.5 Bathrooms | Family Room
Interior 3,400 SF | 315.9 m²
Exterior 660 SF | 61.3 m²
Total 4,060 SF | 377.2 m²



THE RITZ-CARLTON
RESIDENCES

HAMMOCK DUNES, PALM COAST



 The dimensions stated for any depicted unit floor plan are approximate because there are various recognized methods for calculating the square footage of a unit. The square footage stated herein is calculated from the exterior boundaries of the exterior walls to the centerline of interior demising walls without deductions for cutouts, curves, or architectural features. This method results in quoted dimensions greater than the dimensions that would be determined by using other accepted methods. The definition of "Unit" and the calculation method to be relied upon is set forth by the Developer in Developer's prospectus. The method set forth in the Developer's prospectus is another commonly accepted method of calculation, but it will result in a square footage calculation less than the method used here. The illustrated layout, locations of windows, doors, closets, plumbing fixtures, mechanical equipment, appliances, structural elements, architectural elements, and the uses, configurations, and entries to rooms are conceptual and may change based on final approved plans, permitting, and completed construction. The illustrated furniture and the uses of space are suggested uses only and are not intended to represent or guaranty any specific use of space or accommodation of specific furnishings. Furnishings, design features, fixtures, and décor illustrated are not included with a unit purchase. Consult the Developer's prospectus to understand what is offered with purchase and the calculation of the Unit square footage and dimensions to be relied upon. 2024 © by BH Palm Coast 2626 LLC with all rights reserved.



THE RITZ-CARLTON RESIDENCES

HAMMOCK DUNES, PALM COAST

Unit 02

3 Bedrooms | 3.5 Bathrooms | Den
Total Interior 2,390 SF | 222 m²

Unit 02

3 Bedrooms | 3.5 Bathrooms | Den

Interior 2,390 SF | 222 m²

Exterior 250 SF | 23.2 m²

Total 2,640 SF | 245.3 m²



THE RITZ-CARLTON
RESIDENCES

HAMMOCK DUNES, PALM COAST



ATLANTIC
OCEAN

RELATED

BH GROUP

CG
COASTAL GATEWAY
AGENCY

⚠ The dimensions stated for any depicted unit floor plan are approximate because there are various recognized methods for calculating the square footage of a unit. The square footage stated herein is calculated from the exterior boundaries of the exterior walls to the centerline of interior demising walls without deductions for cutouts, curves, or architectural features. This method results in quoted dimensions greater than the dimensions that would be determined by using other accepted methods. The definition of "Unit" and the calculation method to be relied upon is set forth by the Developer in Developer's prospectus. The method set forth in the Developer's prospectus is another commonly accepted method of calculation, but it will result in a square footage calculation less than the method used here. The illustrated layout, locations of windows, doors, closets, plumbing fixtures, mechanical equipment, appliances, structural elements, architectural elements, and the uses, configurations, and entries to rooms are conceptual and may change based on final approved plans, permitting, and completed construction. The illustrated furniture and the uses of space are suggested uses only and are not intended to represent or guaranty any specific use of space or accommodation of specific furnishings. Furnishings, design features, fixtures, and décor illustrated are not included with a unit purchase. Consult the Developer's prospectus to understand what is offered with purchase and the calculation of the Unit square footage and dimensions to be relied upon. 2024 © by BH Palm Coast 2626 LLC with all rights reserved.



THE RITZ-CARLTON RESIDENCES

HAMMOCK DUNES, PALM COAST

Unit 03

4 Bedrooms | 4.5 Bathrooms | Family Room

Total Interior 3,040 SF | 282.4 m²

Unit 03

4 Bedrooms | 4.5 Bathrooms | Family Room
Interior 3,040 SF | 282.4 m²
Exterior 375 SF | 34.8 m²
Total 3,415 SF | 317.3 m²



THE RITZ-CARLTON
RESIDENCES

HAMMOCK DUNES, PALM COAST



⚠ The dimensions stated for any depicted unit floor plan are approximate because there are various recognized methods for calculating the square footage of a unit. The square footage stated herein is calculated from the exterior boundaries of the exterior walls to the centerline of interior demising walls without deductions for cutouts, curves, or architectural features. This method results in quoted dimensions greater than the dimensions that would be determined by using other accepted methods. The definition of "Unit" and the calculation method to be relied upon is set forth by the Developer in Developer's prospectus. The method set forth in the Developer's prospectus is another commonly accepted method of calculation, but it will result in a square footage calculation less than the method used here. The illustrated layout, locations of windows, doors, closets, plumbing fixtures, mechanical equipment, appliances, structural elements, architectural elements, and the uses, configurations, and entries to rooms are conceptual and may change based on final approved plans, permitting, and completed construction. The illustrated furniture and the uses of space are suggested uses only and are not intended to represent or guaranty any specific use of space or accommodation of specific furnishings. Furnishings, design features, fixtures, and décor illustrated are not included with a unit purchase. Consult the Developer's prospectus to understand what is offered with purchase and the calculation of the Unit square footage and dimensions to be relied upon. 2024 © by BH Palm Coast 2626 LLC with all rights reserved.





THE RITZ-CARLTON RESIDENCES

HAMMOCK DUNES, PALM COAST

Unit 04

4 Bedrooms | 4.5 Bathrooms | Family Room

Total Interior 3,040 SF | 282.4 m²

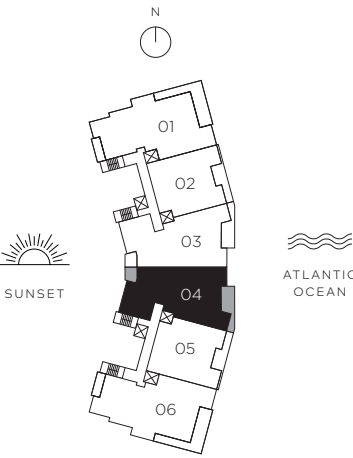
Unit 04

4 Bedrooms | 4.5 Bathrooms | Family Room
Interior 3,040 SF | 282.4 m²
Exterior 375 SF | 34.8 m²
Total 3,415 SF | 317.3 m²



THE RITZ-CARLTON
RESIDENCES

HAMMOCK DUNES, PALM COAST



⚠ The dimensions stated for any depicted unit floor plan are approximate because there are various recognized methods for calculating the square footage of a unit. The square footage stated herein is calculated from the exterior boundaries of the exterior walls to the centerline of interior demising walls without deductions for cutouts, curves, or architectural features. This method results in quoted dimensions greater than the dimensions that would be determined by using other accepted methods. The definition of "Unit" and the calculation method to be relied upon is set forth by the Developer in Developer's prospectus. The method set forth in the Developer's prospectus is another commonly accepted method of calculation, but it will result in a square footage calculation less than the method used here. The illustrated layout, locations of windows, doors, closets, plumbing fixtures, mechanical equipment, appliances, structural elements, architectural elements, and the uses, configurations, and entries to rooms are conceptual and may change based on final approved plans, permitting, and completed construction. The illustrated furniture and the uses of space are suggested uses only and are not intended to represent or guaranty any specific use of space or accommodation of specific furnishings. Furnishings, design features, fixtures, and décor illustrated are not included with a unit purchase. Consult the Developer's prospectus to understand what is offered with purchase and the calculation of the Unit square footage and dimensions to be relied upon. 2024 © by BH Palm Coast 2626 LLC with all rights reserved.



THE RITZ-CARLTON RESIDENCES

HAMMOCK DUNES, PALM COAST

Unit 05

3 Bedrooms | 3.5 Bathrooms | Den
Total Interior 2,390 SF | 222 m²

Unit 05

3 Bedrooms | 3.5 Bathrooms | Den

Interior 2,390 SF | 222 m²

Exterior 250 SF | 23.2 m²

Total 2,640 SF | 245.3 m²



THE RITZ-CARLTON RESIDENCES

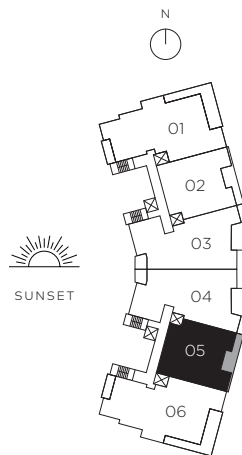
HAMMOCK DUNES, PALM COAST



SUNSET



ATLANTIC
OCEAN



SUNSET



ATLANTIC
OCEAN

The dimensions stated for any depicted unit floor plan are approximate because there are various recognized methods for calculating the square footage of a unit. The square footage stated herein is calculated from the exterior boundaries of the exterior walls to the centerline of interior demising walls without deductions for cutouts, curves, or architectural features. This method results in quoted dimensions greater than the dimensions that would be determined by using other accepted methods. The definition of "Unit" and the calculation method to be relied upon is set forth by the Developer in Developer's prospectus. The method set forth in the Developer's prospectus is another commonly accepted method of calculation, but it will result in a square footage calculation less than the method used here. The illustrated layout, locations of windows, doors, closets, plumbing fixtures, mechanical equipment, appliances, structural elements, architectural elements, and the uses, configurations, and entries to rooms are conceptual and may change based on final approved plans, permitting, and completed construction. The illustrated furniture and the uses of space are suggested uses only and are not intended to represent or guaranty any specific use of space or accommodation of specific furnishings. Furnishings, design features, fixtures, and décor illustrated are not included with a unit purchase. Consult the Developer's prospectus to understand what is offered with purchase and the calculation of the Unit square footage and dimensions to be relied upon. 2024 © by BH Palm Coast 2626 LLC with all rights reserved.





THE RITZ-CARLTON RESIDENCES

HAMMOCK DUNES, PALM COAST

Unit 06

4 Bedrooms | 4.5 Bathrooms | Family Room

Total Interior 3,400 SF | 315.9 m²

Unit 06

4 Bedrooms | 4.5 Bathrooms | Family Room

Interior 3,400 SF | 315.9 m²

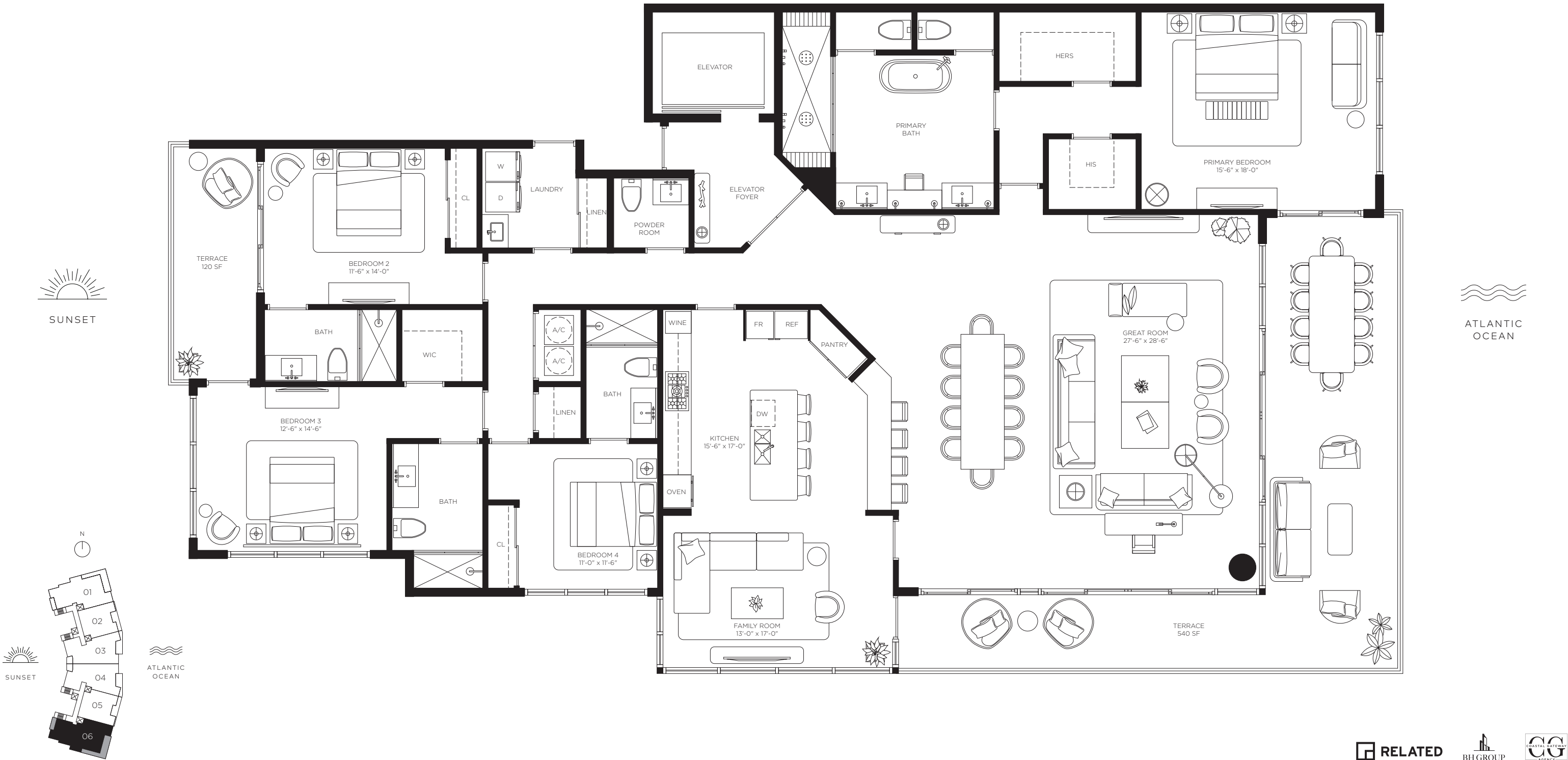
Exterior 660 SF | 61.3 m²

Total 4,060 SF | 377.2 m²



THE RITZ-CARLTON
RESIDENCES

HAMMOCK DUNES, PALM COAST



⚠ The dimensions stated for any depicted unit floor plan are approximate because there are various recognized methods for calculating the square footage of a unit. The square footage stated herein is calculated from the exterior boundaries of the exterior walls to the centerline of interior demising walls without deductions for cutouts, curves, or architectural features. This method results in quoted dimensions greater than the dimensions that would be determined by using other accepted methods. The definition of "Unit" and the calculation method to be relied upon is set forth by the Developer in Developer's prospectus. The method set forth in the Developer's prospectus is another commonly accepted method of calculation, but it will result in a square footage calculation less than the method used here. The illustrated layout, locations of windows, doors, closets, plumbing fixtures, mechanical equipment, appliances, structural elements, architectural elements, and the uses, configurations, and entries to rooms are conceptual and may change based on final approved plans, permitting, and completed construction. The illustrated furniture and the uses of space are suggested uses only and are not intended to represent or guaranty any specific use of space or accommodation of specific furnishings. Furnishings, design features, fixtures, and décor illustrated are not included with a unit purchase. Consult the Developer's prospectus to understand what is offered with purchase and the calculation of the Unit square footage and dimensions to be relied upon. 2024 © by BH Palm Coast 2626 LLC with all rights reserved.