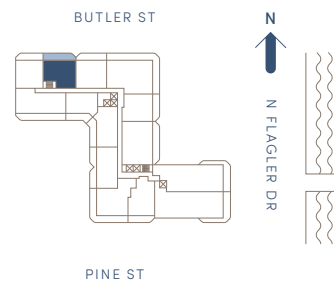
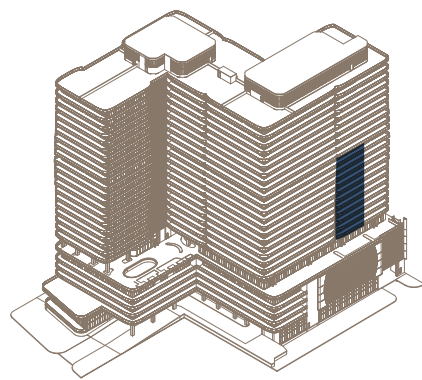
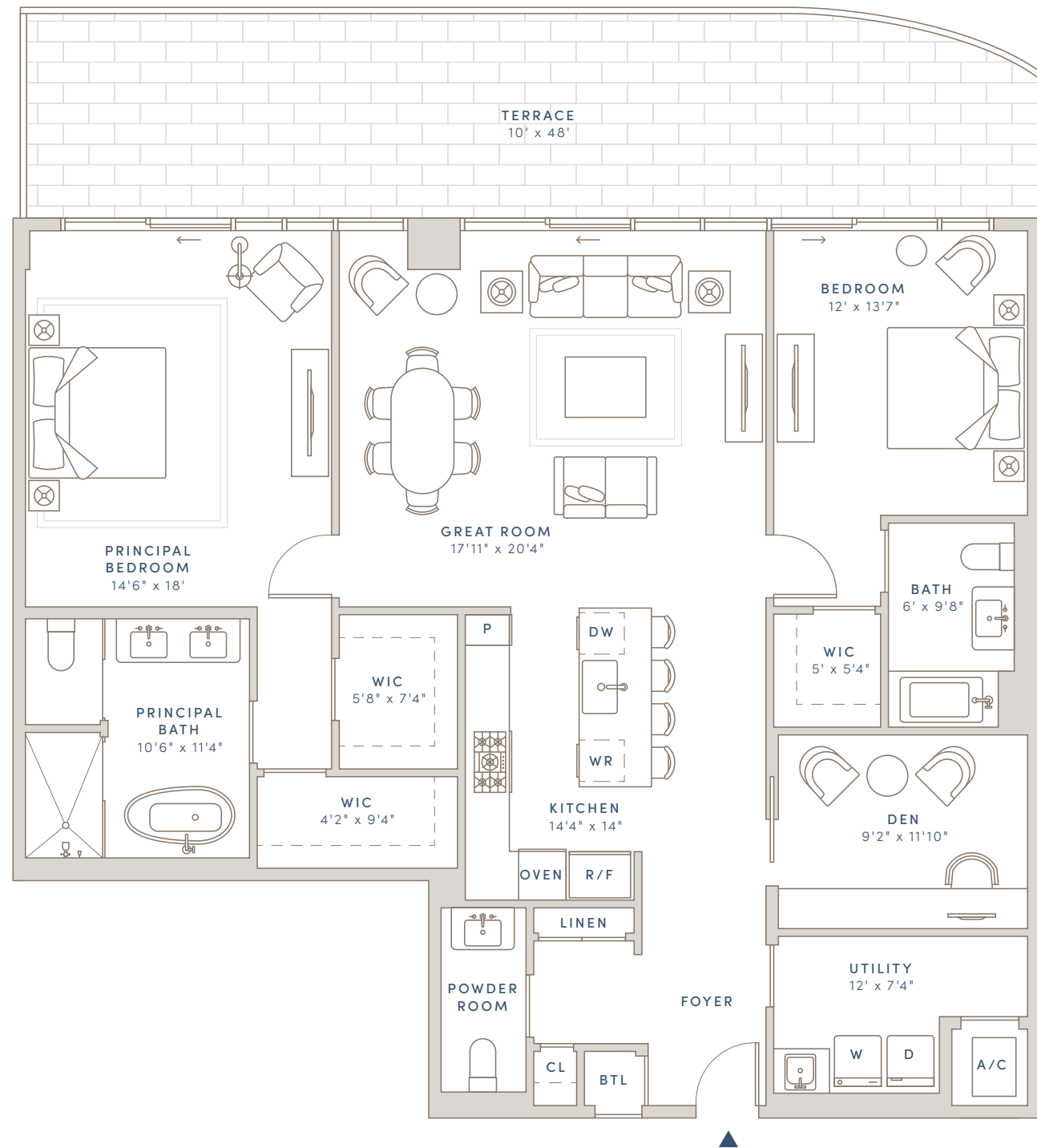


# RESIDENCE A

## FLOORS 7-18

2 BEDROOMS + DEN  
2 BATHS  
1 POWDER ROOM

INTERIOR: 1,857 SQ FT  
EXTERIOR: 466 SQ FT  
TOTAL: 2,323 SQ FT



DEVELOPER  
SAVANNA

ARCHITECT  
ARQUITECTONICA

INTERIOR DESIGN  
GABELLINI SHEPPARD

LANDSCAPE ARCHITECT  
EDSA

CONSTRUCTION TEAM  
SAVCON AND GILBANE

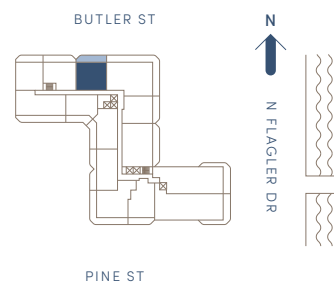
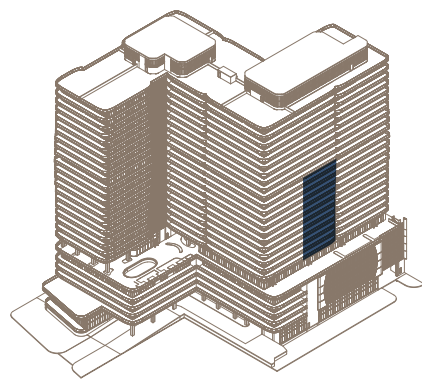
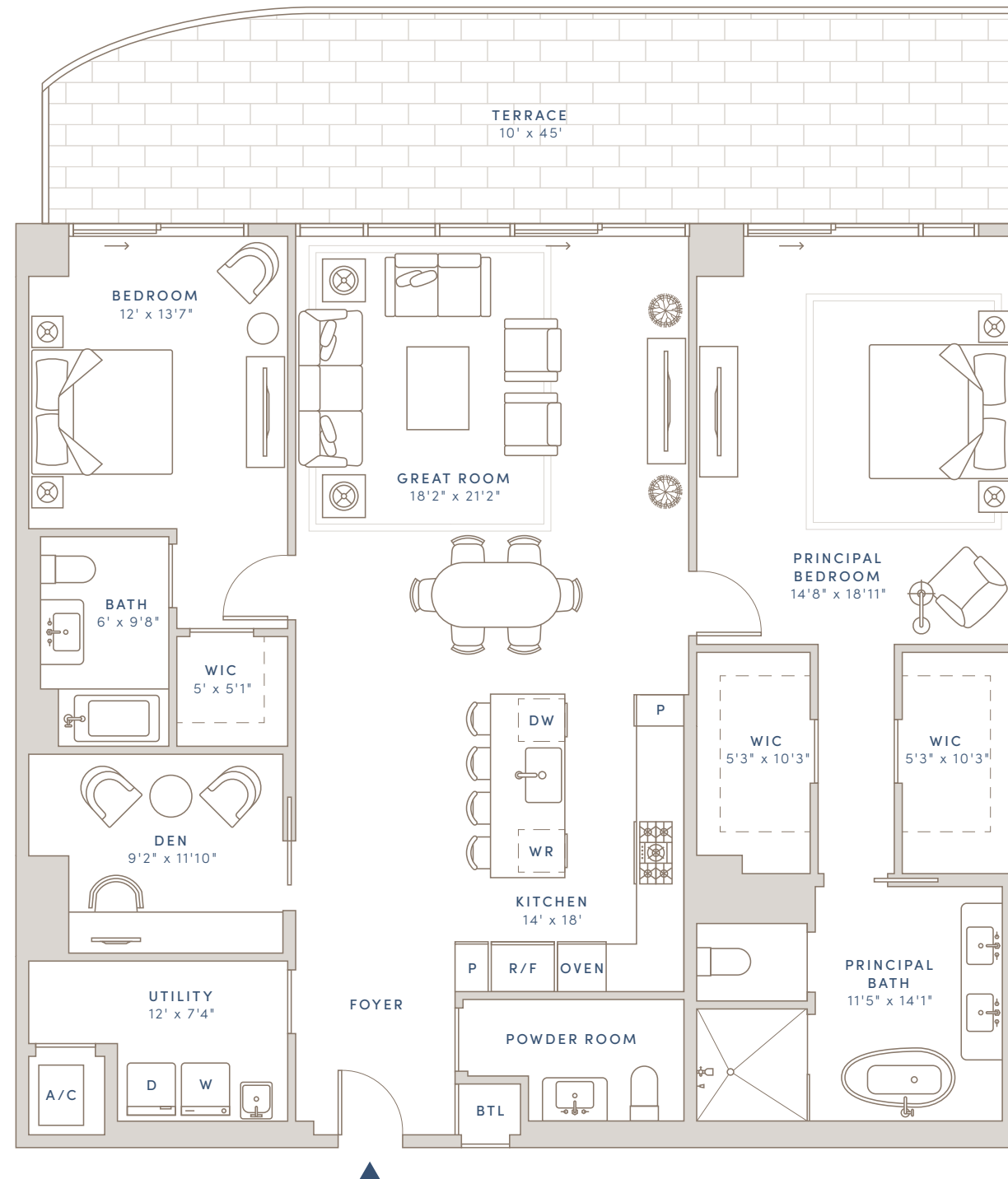
EXCLUSIVE SALES AND MARKETING  
COMPASS DEVELOPMENT  
MARKETING GROUP

# RESIDENCE B

## FLOORS 7-18

2 BEDROOMS + DEN  
2 BATHS  
1 POWDER ROOM

INTERIOR: 1,983 SQ FT  
EXTERIOR: 431 SQ FT  
TOTAL: 2,414 SQ FT



DEVELOPER  
SAVANNA

ARCHITECT  
ARQUITECTONICA

INTERIOR DESIGN  
GABELLINI SHEPPARD

LANDSCAPE ARCHITECT  
EDSA

CONSTRUCTION TEAM  
SAVCON AND GILBANE

EXCLUSIVE SALES AND MARKETING  
COMPASS DEVELOPMENT  
MARKETING GROUP

Sales Gallery at 300 Butler Street, West Palm Beach, FL 33407

1919 N Flagler Drive · West Palm Beach, FL 33407 · 561-448-3015 · OlaraWestPalmBeach.com

Floorplans and dimensions are approximate, may vary, and are subject to change without notice. Floorplans are conceptual and not to scale. ORAL REPRESENTATIONS CANNOT BE RELIED UPON AS CORRECTLY STATING THE REPRESENTATIONS OF THE DEVELOPER. FOR CORRECT REPRESENTATIONS, MAKE REFERENCE TO THE DOCUMENTS REQUIRED BY SECTION 718.503, FLORIDA STATUTES, TO BE FURNISHED BY A DEVELOPER TO A BUYER OR LESSEE. THE COMPLETE OFFERING TERMS ARE IN A FLORIDA PROSPECTUS AVAILABLE FROM THE DEVELOPER. New York: The Offering Plan for Olara Condominium has been filed with the New York State Department of Law, File No. CP22-0089. The Offering Plan is available from the Sponsor, New Jersey. This advertisement is a solicitation for the sale of units in Olara Condominium: N.J. Reg. No. 22-04-0012. Massachusetts: This Condominium has been registered with the Massachusetts Board of Registration of Real Estate Brokers and Salespersons: F-1277-01-01. California: WARNING: THE CALIFORNIA DEPARTMENT OF REAL ESTATE HAS NOT INSPECTED, EXAMINED, OR QUALIFIED THIS OFFERING. Equal Housing Opportunity

# RESIDENCE C

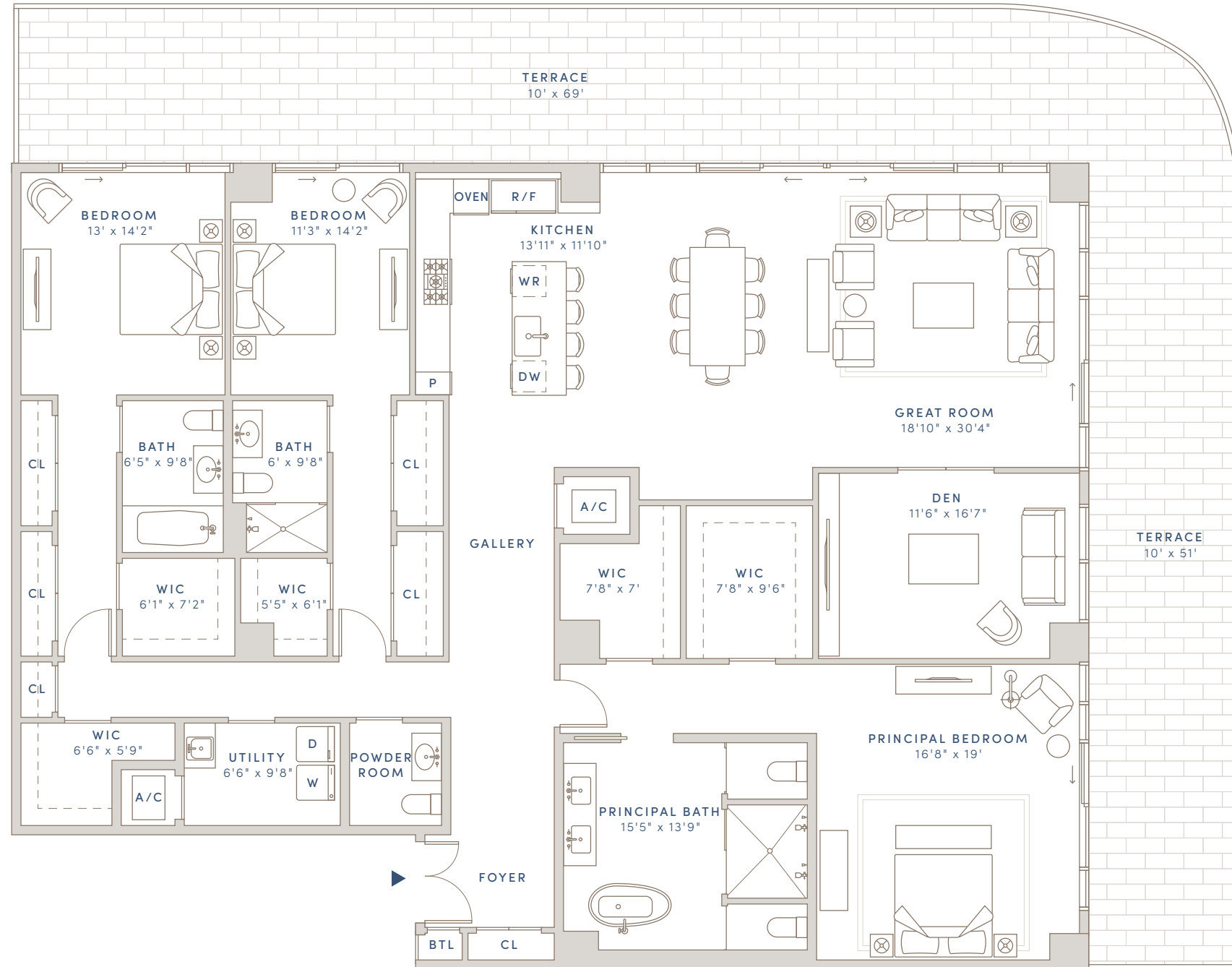
## FLOORS 7-26

3 BEDROOMS + DEN  
3 BATHS  
1 POWDER ROOM

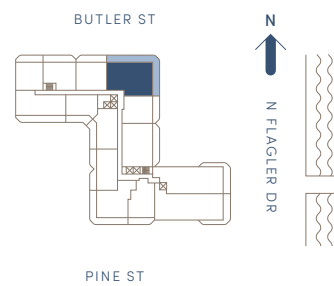
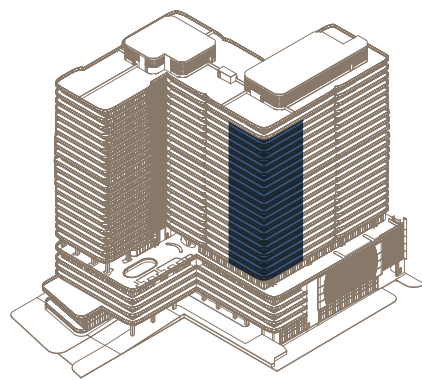
INTERIOR: 3,286 SQ FT  
EXTERIOR: 1,225 SQ FT  
TOTAL: 4,511 SQ FT

# OLARA

WHERE LIFE FLOWS



INTRACOASTAL



DEVELOPER  
SAVANNA

ARCHITECT  
ARQUITECTONICA

INTERIOR DESIGN  
GABELLINI SHEPPARD

LANDSCAPE ARCHITECT  
EDSA

CONSTRUCTION TEAM  
SAVCON AND GILBANE

EXCLUSIVE SALES AND MARKETING  
COMPASS DEVELOPMENT  
MARKETING GROUP

Sales Gallery at 300 Butler Street, West Palm Beach, FL 33407

1919 N Flagler Drive · West Palm Beach, FL 33407 · 561-448-3015 · OlaraWestPalmBeach.com

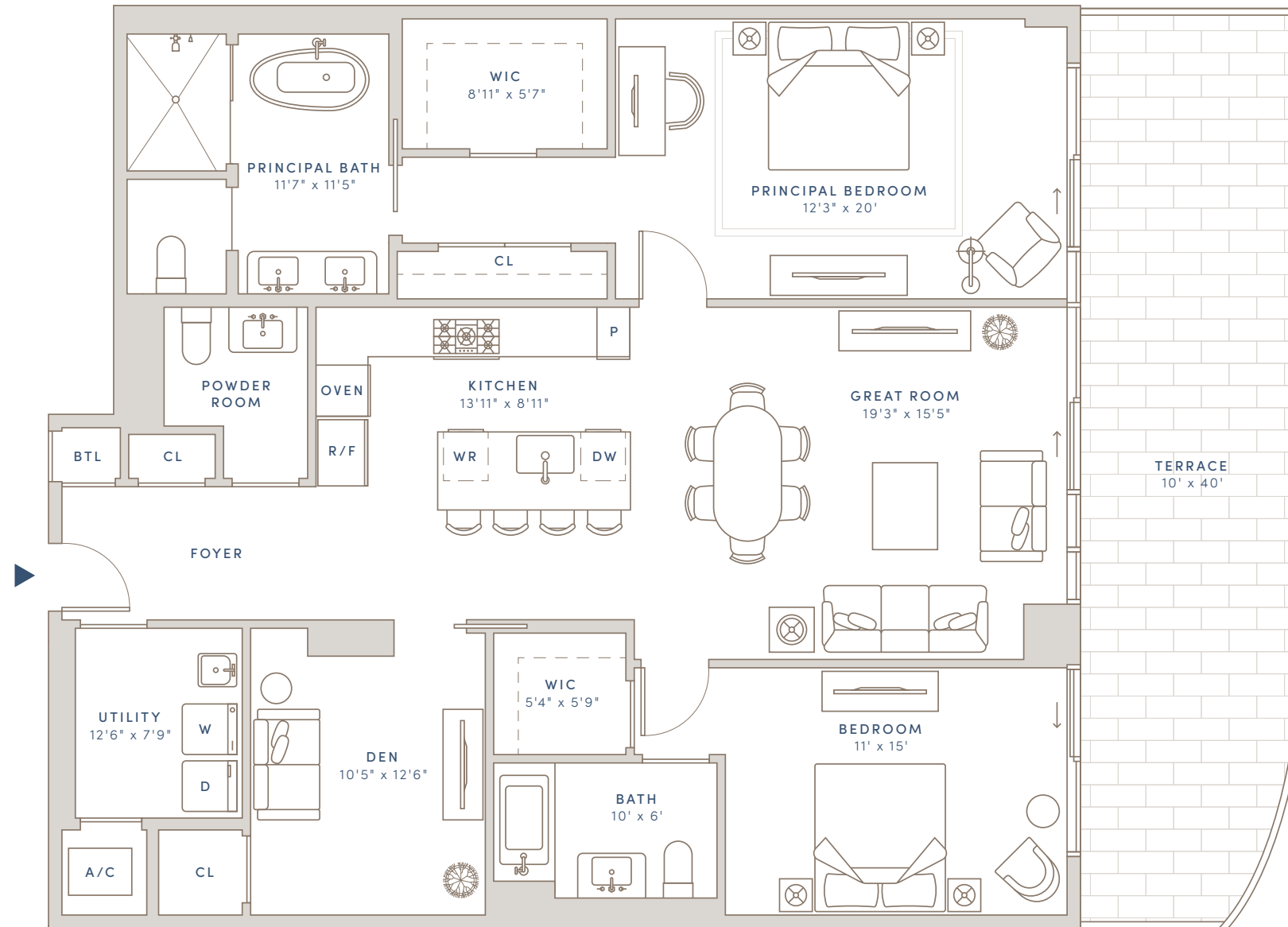
Floorplans and dimensions are approximate, may vary, and are subject to change without notice. Floorplans are conceptual and not to scale. ORAL REPRESENTATIONS CANNOT BE RELIED UPON AS CORRECTLY STATING THE REPRESENTATIONS OF THE DEVELOPER. FOR CORRECT REPRESENTATIONS, MAKE REFERENCE TO THE DOCUMENTS REQUIRED BY SECTION 718.503, FLORIDA STATUTES, TO BE FURNISHED BY A DEVELOPER TO A BUYER OR LESSEE. THE COMPLETE OFFERING TERMS ARE IN A FLORIDA PROSPECTUS AVAILABLE FROM THE DEVELOPER. New York: The Offering Plan for Olara Condominium has been filed with the New York State Department of Law, File No. CP22-0089. The Offering Plan is available from the Sponsor, New Jersey: This advertisement is a solicitation for the sale of units in Olara Condominium: N.J. Reg. No. 22-04-0012. Massachusetts: This Condominium has been registered with the Massachusetts Board of Registration of Real Estate Brokers and Salespersons: F-1277-01-01. California: WARNING: THE CALIFORNIA DEPARTMENT OF REAL ESTATE HAS NOT INSPECTED, EXAMINED, OR QUALIFIED THIS OFFERING. Equal Housing Opportunity

# RESIDENCE D

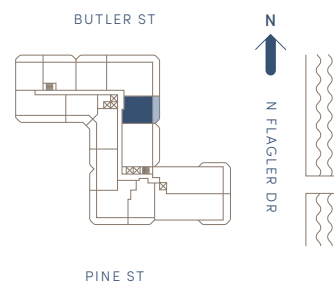
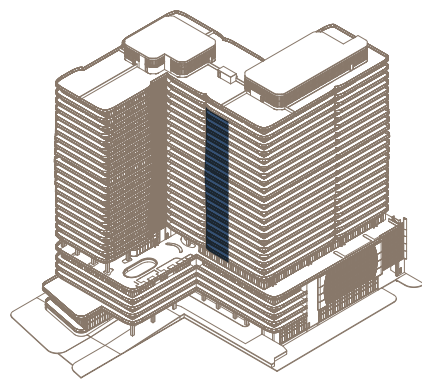
## FLOORS 7-26

2 BEDROOMS + DEN  
2 BATHS  
1 POWDER ROOM

INTERIOR: 1,774 SQ FT  
EXTERIOR: 381 SQ FT  
TOTAL: 2,155 SQ FT



INTRACOASTAL  
~~~~~



DEVELOPER  
SAVANNA  
  
ARCHITECT  
ARQUITECTONICA

INTERIOR DESIGN  
GABELLINI SHEPPARD  
  
LANDSCAPE ARCHITECT  
EDSA

CONSTRUCTION TEAM  
SAVCON AND GILBANE

EXCLUSIVE SALES AND MARKETING  
COMPASS DEVELOPMENT  
MARKETING GROUP

Sales Gallery at 300 Butler Street, West Palm Beach, FL 33407

1919 N Flagler Drive · West Palm Beach, FL 33407 · 561-448-3015 · OlaraWestPalmBeach.com

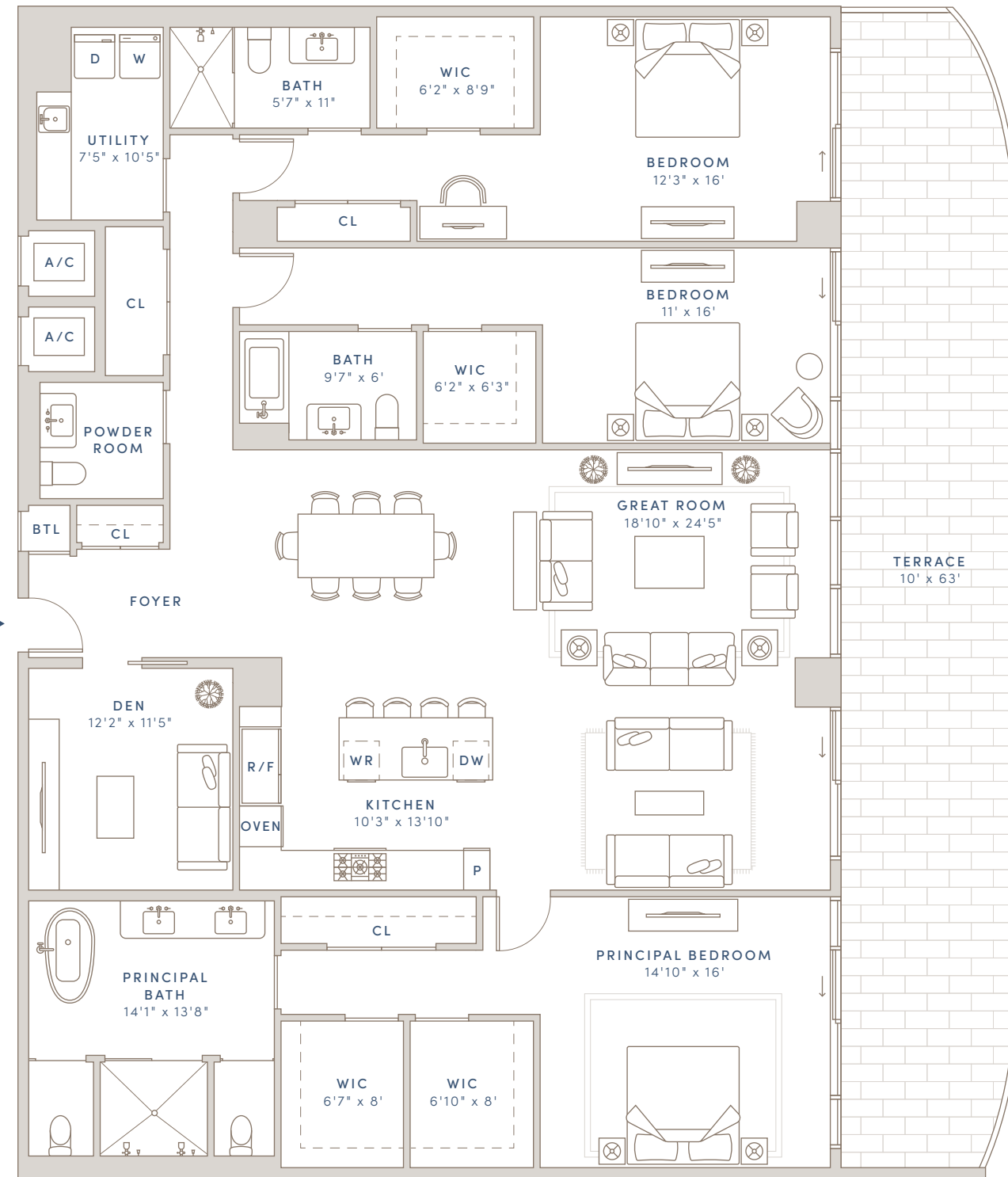
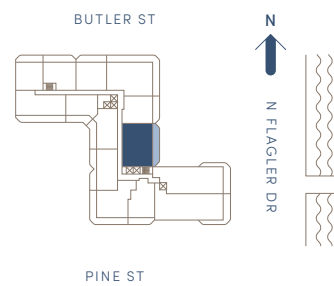
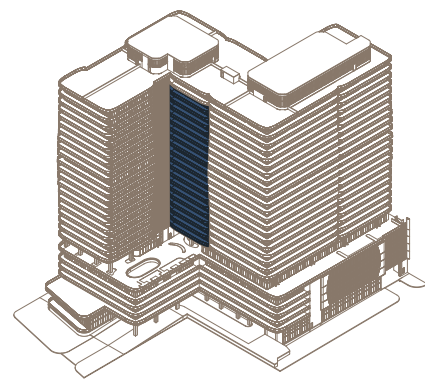
Floorplans and dimensions are approximate, may vary, and are subject to change without notice. Floorplans are conceptual and not to scale. ORAL REPRESENTATIONS CANNOT BE RELIED UPON AS CORRECTLY STATING THE REPRESENTATIONS OF THE DEVELOPER. FOR CORRECT REPRESENTATIONS, MAKE REFERENCE TO THE DOCUMENTS REQUIRED BY SECTION 718.503, FLORIDA STATUTES, TO BE FURNISHED BY A DEVELOPER TO A BUYER OR LESSEE. THE COMPLETE OFFERING TERMS ARE IN A FLORIDA PROSPECTUS AVAILABLE FROM THE DEVELOPER. New York: The Offering Plan for Olara Condominium has been filed with the New York State Department of Law, File No. CP22-0089. The Offering Plan is available from the Sponsor, New Jersey: This advertisement is a solicitation for the sale of units in Olara Condominium, N.J. Reg. No. 22-04-0012. Massachusetts: This Condominium has been registered with the Massachusetts Board of Registration of Real Estate Brokers and Salespersons: F-1277-01-01. California: WARNING: THE CALIFORNIA DEPARTMENT OF REAL ESTATE HAS NOT INSPECTED, EXAMINED, OR QUALIFIED THIS OFFERING. Equal Housing Opportunity

# RESIDENCE E

## FLOORS 7-26

3 BEDROOMS + DEN  
3 BATHS  
1 POWDER ROOM

INTERIOR: 2,963 SQ FT  
EXTERIOR: 605 SQ FT  
TOTAL: 3,568 SQ FT



DEVELOPER  
SAVANNA

ARCHITECT  
ARQUITECTONICA

INTERIOR DESIGN  
GABELLINI SHEPPARD

LANDSCAPE ARCHITECT  
EDSA

CONSTRUCTION TEAM  
SAVCON AND GILBANE

EXCLUSIVE SALES AND MARKETING  
COMPASS DEVELOPMENT  
MARKETING GROUP

# RESIDENCE F

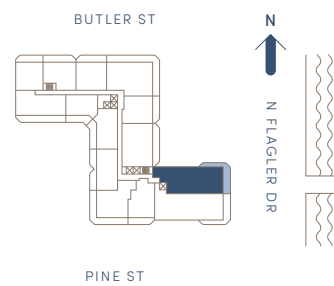
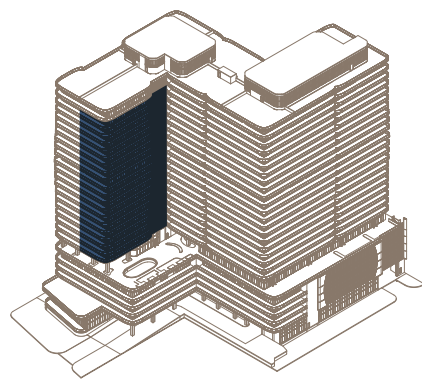
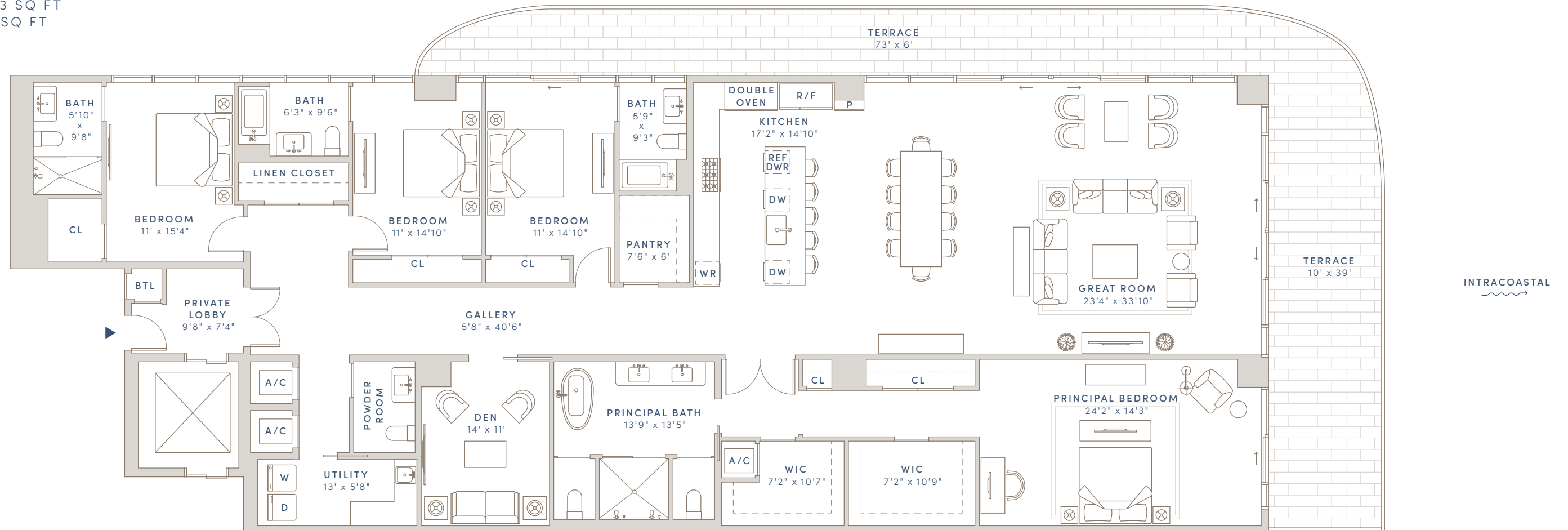
# OLARA

WHERE LIFE FLOWS

## FLOORS 7-26

4 BEDROOMS + DEN  
4 BATHS  
1 POWDER ROOM

INTERIOR: 3,805 SQ FT  
EXTERIOR: 793 SQ FT  
TOTAL: 4,598 SQ FT



DEVELOPER  
SAVANNA

ARCHITECT  
ARQUITECTONICA

INTERIOR DESIGN  
GABELLINI SHEPPARD

LANDSCAPE ARCHITECT  
EDSA

CONSTRUCTION TEAM  
SAVCON AND GILBANE

EXCLUSIVE SALES AND MARKETING  
COMPASS DEVELOPMENT  
MARKETING GROUP

Sales Gallery at 300 Butler Street, West Palm Beach, FL 33407

1919 N Flagler Drive · West Palm Beach, FL 33407 · 561-448-3015 · OlaraWestPalmBeach.com

Floorplans and dimensions are approximate, may vary, and are subject to change without notice. Floorplans are conceptual and not to scale. ORAL REPRESENTATIONS CANNOT BE RELIED UPON AS CORRECTLY STATING THE REPRESENTATIONS OF THE DEVELOPER. FOR CORRECT REPRESENTATIONS, MAKE REFERENCE TO THE DOCUMENTS REQUIRED BY SECTION 718.503, FLORIDA STATUTES, TO BE FURNISHED BY A DEVELOPER TO A BUYER OR LESSEE. THE COMPLETE OFFERING TERMS ARE IN A FLORIDA PROSPECTUS AVAILABLE FROM THE DEVELOPER. New York: The Offering Plan for Olara Condominium has been filed with the New York State Department of Law, File No. CP22-0089. The Offering Plan is available from the Sponsor, New Jersey: This advertisement is a solicitation for the sale of units in Olara Condominium: N.J. Reg. No. 22-04-0012. Massachusetts: This Condominium has been registered with the Massachusetts Board of Registration of Real Estate Brokers and Salespersons: F-1277-01-01. California: WARNING: THE CALIFORNIA DEPARTMENT OF REAL ESTATE HAS NOT INSPECTED, EXAMINED, OR QUALIFIED THIS OFFERING. Equal Housing Opportunity

# RESIDENCE G

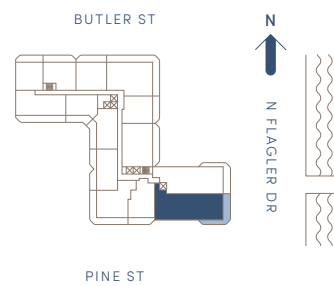
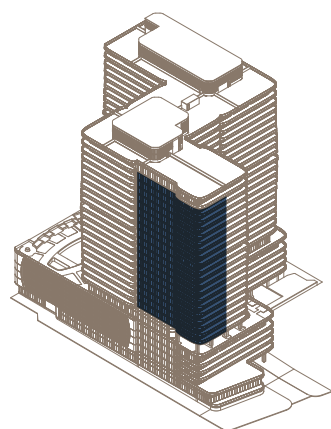
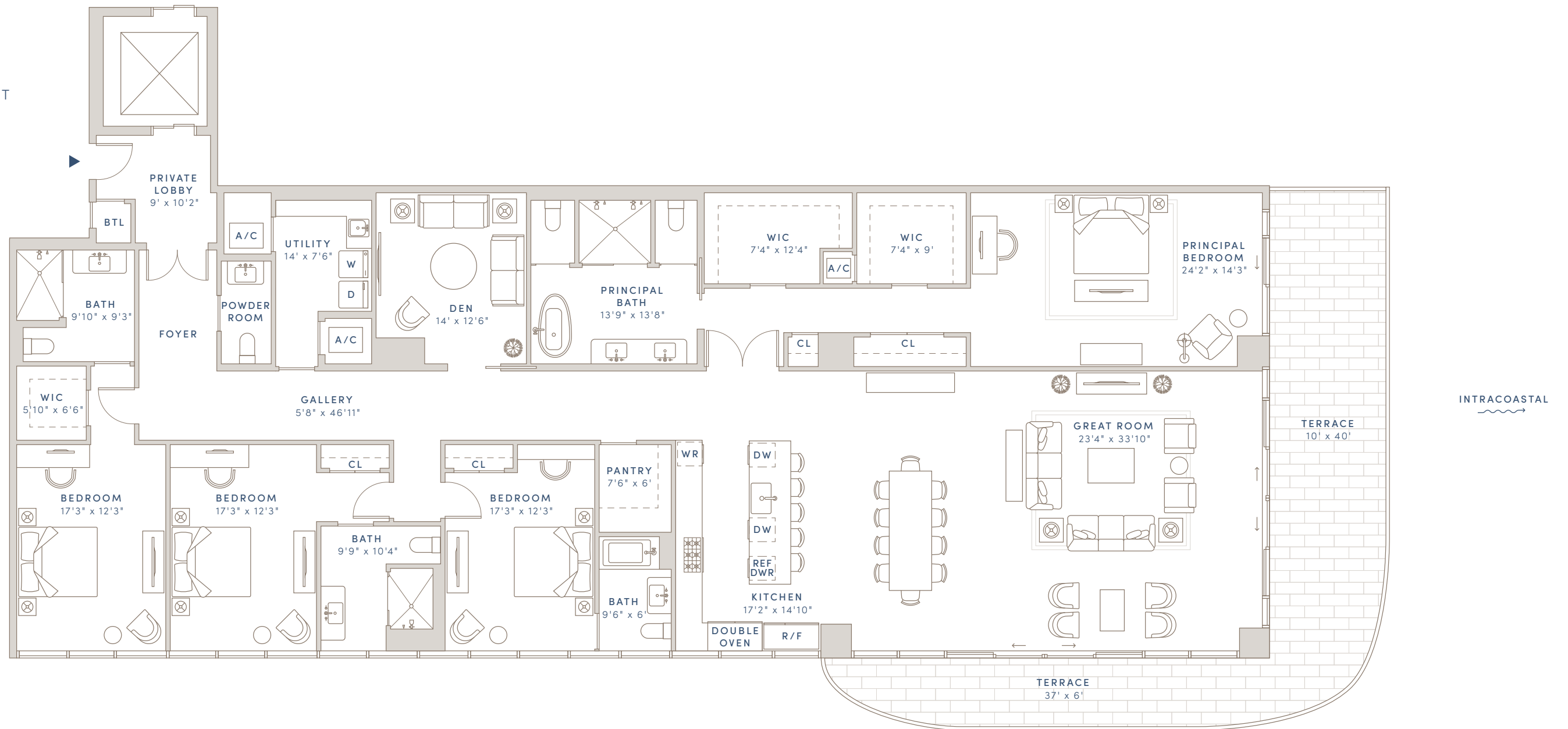
# OLARA

WHERE LIFE FLOWS

## FLOORS 7-26

4 BEDROOMS + DEN  
4 BATHS  
1 POWDER ROOM

INTERIOR: 4,110 SQ FT  
EXTERIOR: 599 SQ FT  
TOTAL: 4,709 SQ FT



DEVELOPER  
SAVANNA

ARCHITECT  
ARQUITECTONICA

INTERIOR DESIGN  
GABELLINI SHEPPARD

LANDSCAPE ARCHITECT  
EDSA

CONSTRUCTION TEAM  
SAVCON AND GILBANE

EXCLUSIVE SALES AND MARKETING  
COMPASS DEVELOPMENT  
MARKETING GROUP

Sales Gallery at 300 Butler Street, West Palm Beach, FL 33407

1919 N Flagler Drive · West Palm Beach, FL 33407 · 561-448-3015 · OlaraWestPalmBeach.com

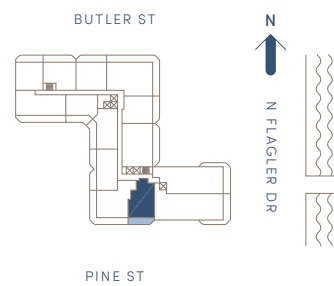
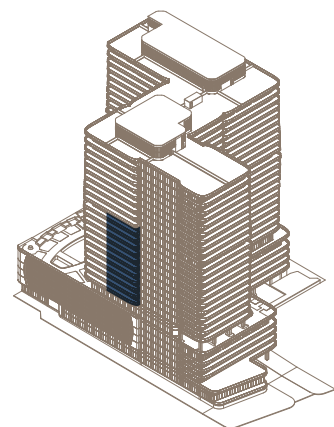
Floorplans and dimensions are approximate, may vary, and are subject to change without notice. Floorplans are conceptual and not to scale. ORAL REPRESENTATIONS CANNOT BE RELIED UPON AS CORRECTLY STATING THE REPRESENTATIONS OF THE DEVELOPER. FOR CORRECT REPRESENTATIONS, MAKE REFERENCE TO THE DOCUMENTS REQUIRED BY SECTION 718.503, FLORIDA STATUTES, TO BE FURNISHED BY A DEVELOPER TO A BUYER OR LESSEE. THE COMPLETE OFFERING TERMS ARE IN A FLORIDA PROSPECTUS AVAILABLE FROM THE DEVELOPER. New York: The Offering Plan for Olara Condominium has been filed with the New York State Department of Law, File No. CP22-0089. The Offering Plan is available from the Sponsor, New Jersey: This advertisement is a solicitation for the sale of units in Olara Condominium: N.J. Reg. No. 22-04-0012. Massachusetts: This Condominium has been registered with the Massachusetts Board of Registration of Real Estate Brokers and Salespersons: F-1277-01-01. California: WARNING: THE CALIFORNIA DEPARTMENT OF REAL ESTATE HAS NOT INSPECTED, EXAMINED, OR QUALIFIED THIS OFFERING. Equal Housing Opportunity

# RESIDENCE H

## FLOORS 7-18

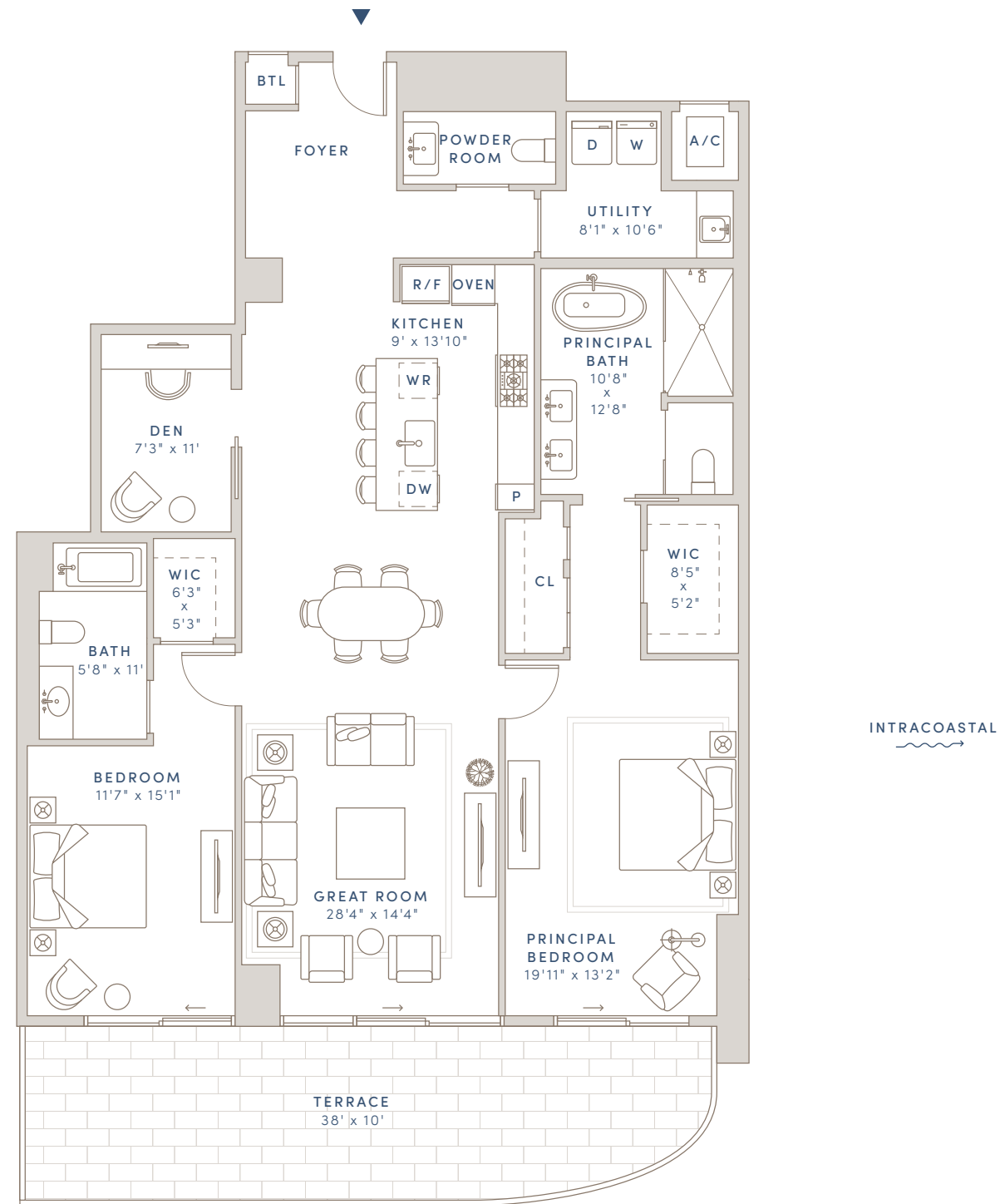
2 BEDROOMS + DEN  
2 BATHS  
1 POWDER ROOM

INTERIOR: 1,914 SQ FT  
EXTERIOR: 362 SQ FT  
TOTAL: 2,276 SQ FT



# OLARA

WHERE LIFE FLOWS



DEVELOPER  
SAVANNA

ARCHITECT  
ARQUITECTONICA

INTERIOR DESIGN  
GABELLINI SHEPPARD

LANDSCAPE ARCHITECT  
EDSA

CONSTRUCTION TEAM  
SAVCON AND GILBANE

EXCLUSIVE SALES AND MARKETING  
COMPASS DEVELOPMENT  
MARKETING GROUP

Sales Gallery at 300 Butler Street, West Palm Beach, FL 33407

1919 N Flagler Drive · West Palm Beach, FL 33407 · 561-448-3015 · OlaraWestPalmBeach.com

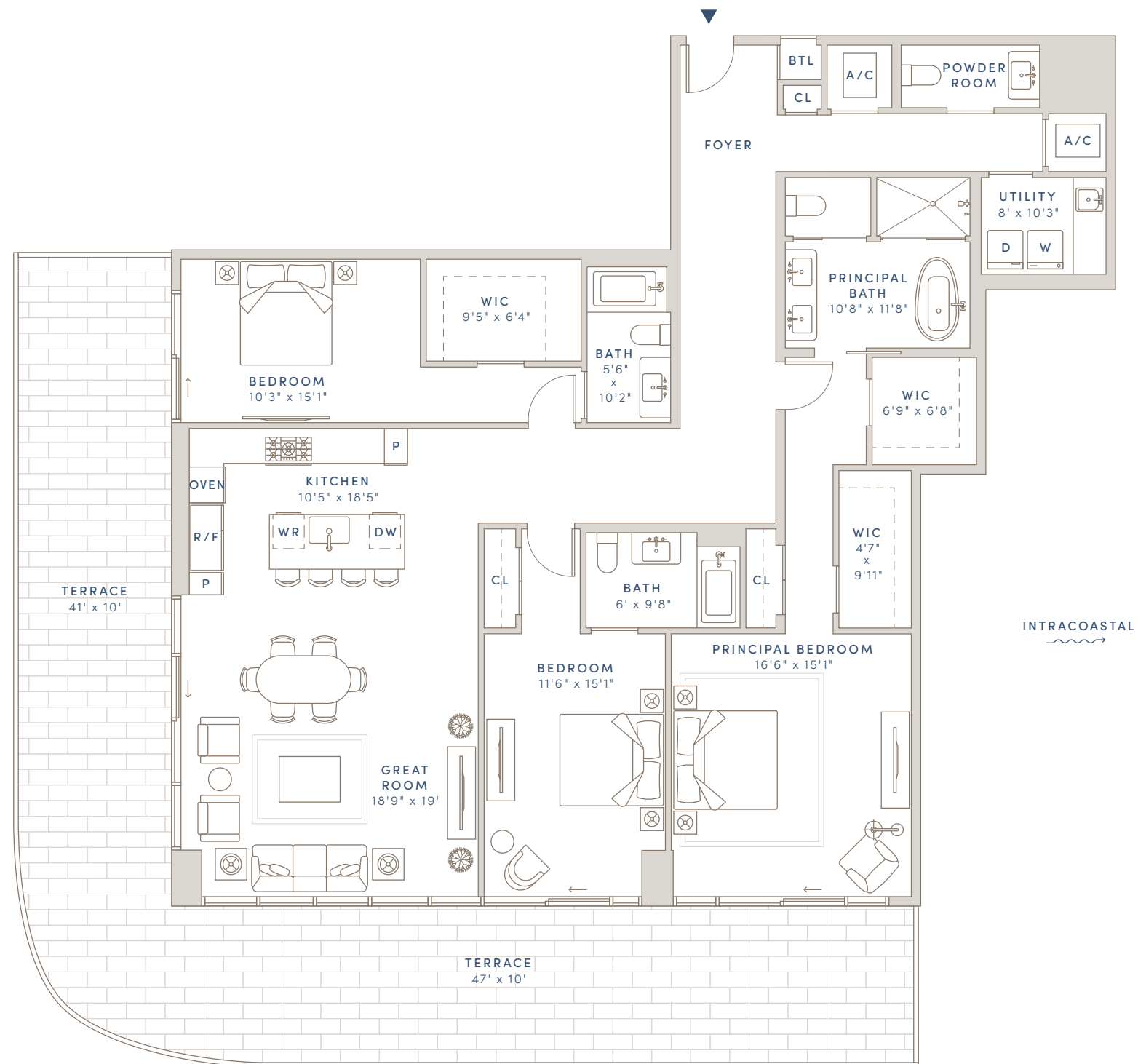
Floorplans and dimensions are approximate, may vary, and are subject to change without notice. Floorplans are conceptual and not to scale. ORAL REPRESENTATIONS CANNOT BE RELIED UPON AS CORRECTLY STATING THE REPRESENTATIONS OF THE DEVELOPER. FOR CORRECT REPRESENTATIONS, MAKE REFERENCE TO THE DOCUMENTS REQUIRED BY SECTION 718.503, FLORIDA STATUTES, TO BE FURNISHED BY A DEVELOPER TO A BUYER OR LESSEE. THE COMPLETE OFFERING TERMS ARE IN A FLORIDA PROSPECTUS AVAILABLE FROM THE DEVELOPER. New York: The Offering Plan for Olara Condominium has been filed with the New York State Department of Law, File No. CP22-0089. The Offering Plan is available from the Sponsor, New Jersey: This advertisement is a solicitation for the sale of units in Olara Condominium: N.J. Reg. No. 22-04-0012. Massachusetts: This Condominium has been registered with the Massachusetts Board of Registration of Real Estate Brokers and Salespersons: F-1277-01-01. California: WARNING: THE CALIFORNIA DEPARTMENT OF REAL ESTATE HAS NOT INSPECTED, EXAMINED, OR QUALIFIED THIS OFFERING. Equal Housing Opportunity

# RESIDENCE I

## FLOORS 7-18

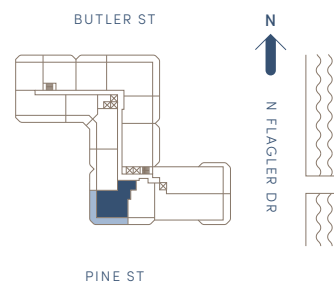
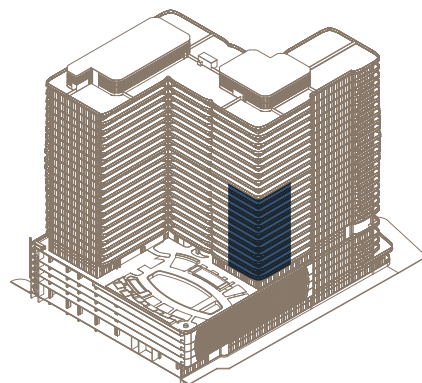
3 BEDROOMS  
3 BATHS  
1 POWDER ROOM

INTERIOR: 2,358 SQ FT  
EXTERIOR: 922 SQ FT  
TOTAL: 3,280 SQ FT



# OLARA

WHERE LIFE FLOWS



DEVELOPER  
SAVANNA

ARCHITECT  
ARQUITECTONICA

INTERIOR DESIGN  
GABELLINI SHEPPARD

LANDSCAPE ARCHITECT  
EDSA

CONSTRUCTION TEAM  
SAVCON AND GILBANE

EXCLUSIVE SALES AND MARKETING  
COMPASS DEVELOPMENT  
MARKETING GROUP

Sales Gallery at 300 Butler Street, West Palm Beach, FL 33407

1919 N Flagler Drive · West Palm Beach, FL 33407 · 561-448-3015 · OlaraWestPalmBeach.com

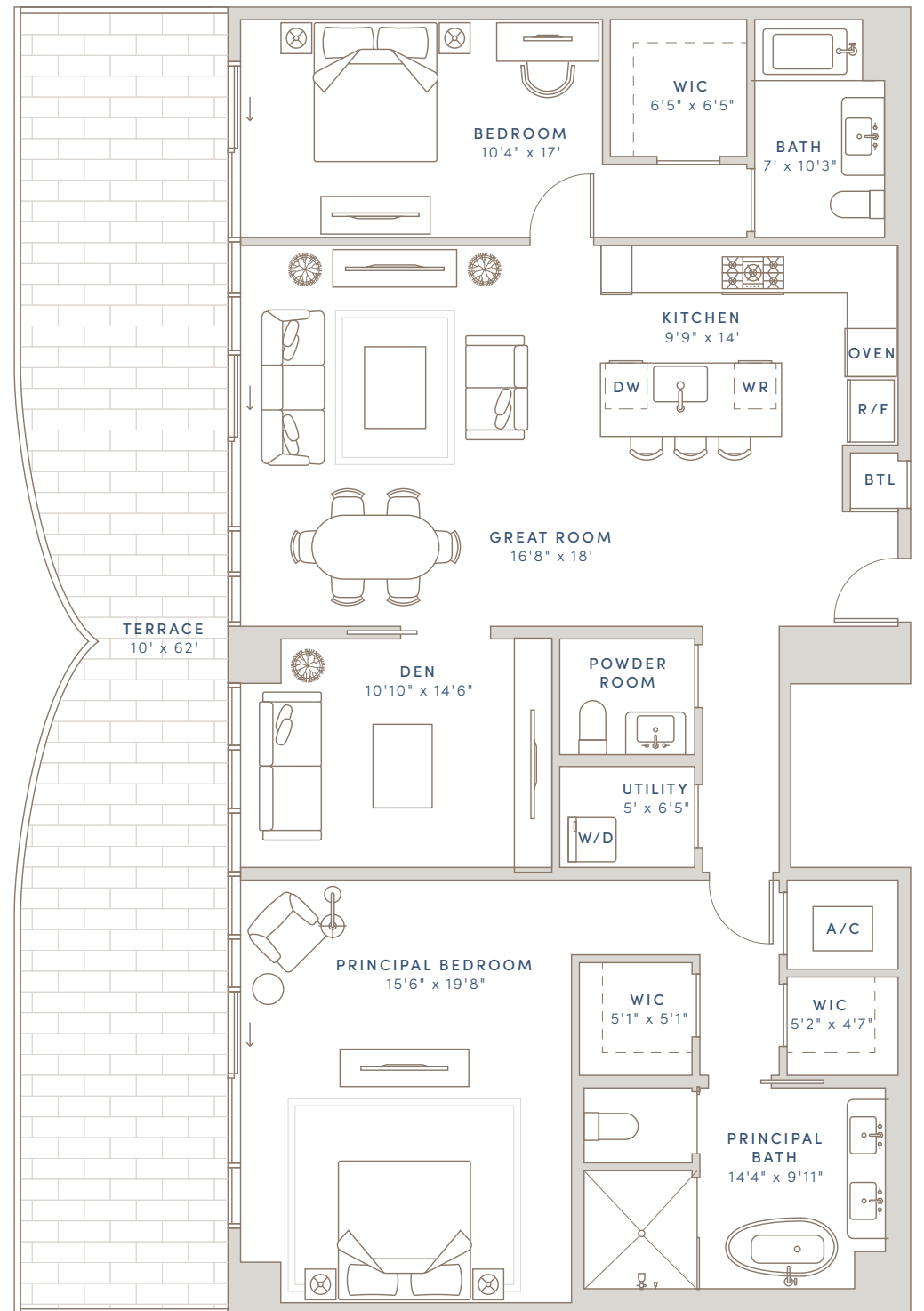
Floorplans and dimensions are approximate, may vary, and are subject to change without notice. Floorplans are conceptual and not to scale. ORAL REPRESENTATIONS CANNOT BE RELIED UPON AS CORRECTLY STATING THE REPRESENTATIONS OF THE DEVELOPER. FOR CORRECT REPRESENTATIONS, MAKE REFERENCE TO THE DOCUMENTS REQUIRED BY SECTION 718.503, FLORIDA STATUTES, TO BE FURNISHED BY A DEVELOPER TO A BUYER OR LESSEE. THE COMPLETE OFFERING TERMS ARE IN A FLORIDA PROSPECTUS AVAILABLE FROM THE DEVELOPER. New York: The Offering Plan for Olara Condominium has been filed with the New York State Department of Law, File No. CP22-0089. The Offering Plan is available from the Sponsor, New Jersey: This advertisement is a solicitation for the sale of units in Olara Condominium: N.J. Reg. No. 22-04-0012. Massachusetts: This Condominium has been registered with the Massachusetts Board of Registration of Real Estate Brokers and Salespersons: F-1277-01-01. California: WARNING: THE CALIFORNIA DEPARTMENT OF REAL ESTATE HAS NOT INSPECTED, EXAMINED, OR QUALIFIED THIS OFFERING. Equal Housing Opportunity

# RESIDENCE J

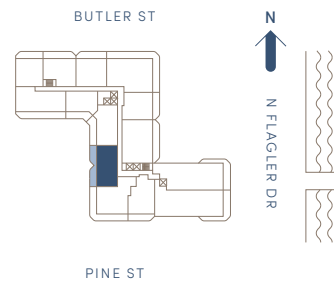
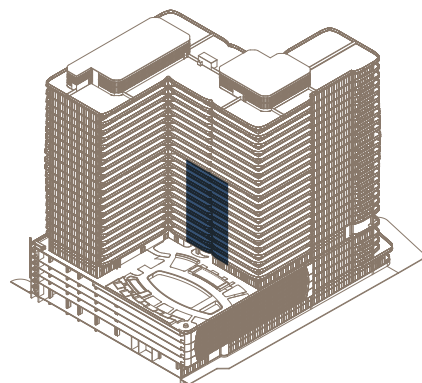
## FLOORS 7-18

2 BEDROOMS + DEN  
2 BATHS  
1 POWDER ROOM

INTERIOR: 1,887 SQ FT  
EXTERIOR: 576 SQ FT  
TOTAL: 2,463 SQ FT



AMENITY DECK



DEVELOPER  
SAVANNA

ARCHITECT  
ARQUITECTONICA

INTERIOR DESIGN  
GABELLINI SHEPPARD

LANDSCAPE ARCHITECT  
EDSA

CONSTRUCTION TEAM  
SAVCON AND GILBANE

EXCLUSIVE SALES AND MARKETING  
COMPASS DEVELOPMENT  
MARKETING GROUP

# OLARA

WHERE LIFE FLOWS

Sales Gallery at 300 Butler Street, West Palm Beach, FL 33407

1919 N Flagler Drive · West Palm Beach, FL 33407 · 561-448-3015 · OlaraWestPalmBeach.com

Floorplans and dimensions are approximate, may vary, and are subject to change without notice. Floorplans are conceptual and not to scale. ORAL REPRESENTATIONS CANNOT BE RELIED UPON AS CORRECTLY STATING THE REPRESENTATIONS OF THE DEVELOPER. FOR CORRECT REPRESENTATIONS, MAKE REFERENCE TO THE DOCUMENTS REQUIRED BY SECTION 718.503, FLORIDA STATUTES, TO BE FURNISHED BY A DEVELOPER TO A BUYER OR LESSEE. THE COMPLETE OFFERING TERMS ARE IN A FLORIDA PROSPECTUS AVAILABLE FROM THE DEVELOPER. New York: The Offering Plan for Olara Condominium has been filed with the New York State Department of Law, File No. CP22-0089. The Offering Plan is available from the Sponsor, New Jersey. This advertisement is a solicitation for the sale of units in Olara Condominium: N.J. Reg. No. 22-04-0012. Massachusetts: This Condominium has been registered with the Massachusetts Board of Registration of Real Estate Brokers and Salespersons: F-1277-01-01. California: WARNING: THE CALIFORNIA DEPARTMENT OF REAL ESTATE HAS NOT INSPECTED, EXAMINED, OR QUALIFIED THIS OFFERING. Equal Housing Opportunity

# RESIDENCE K

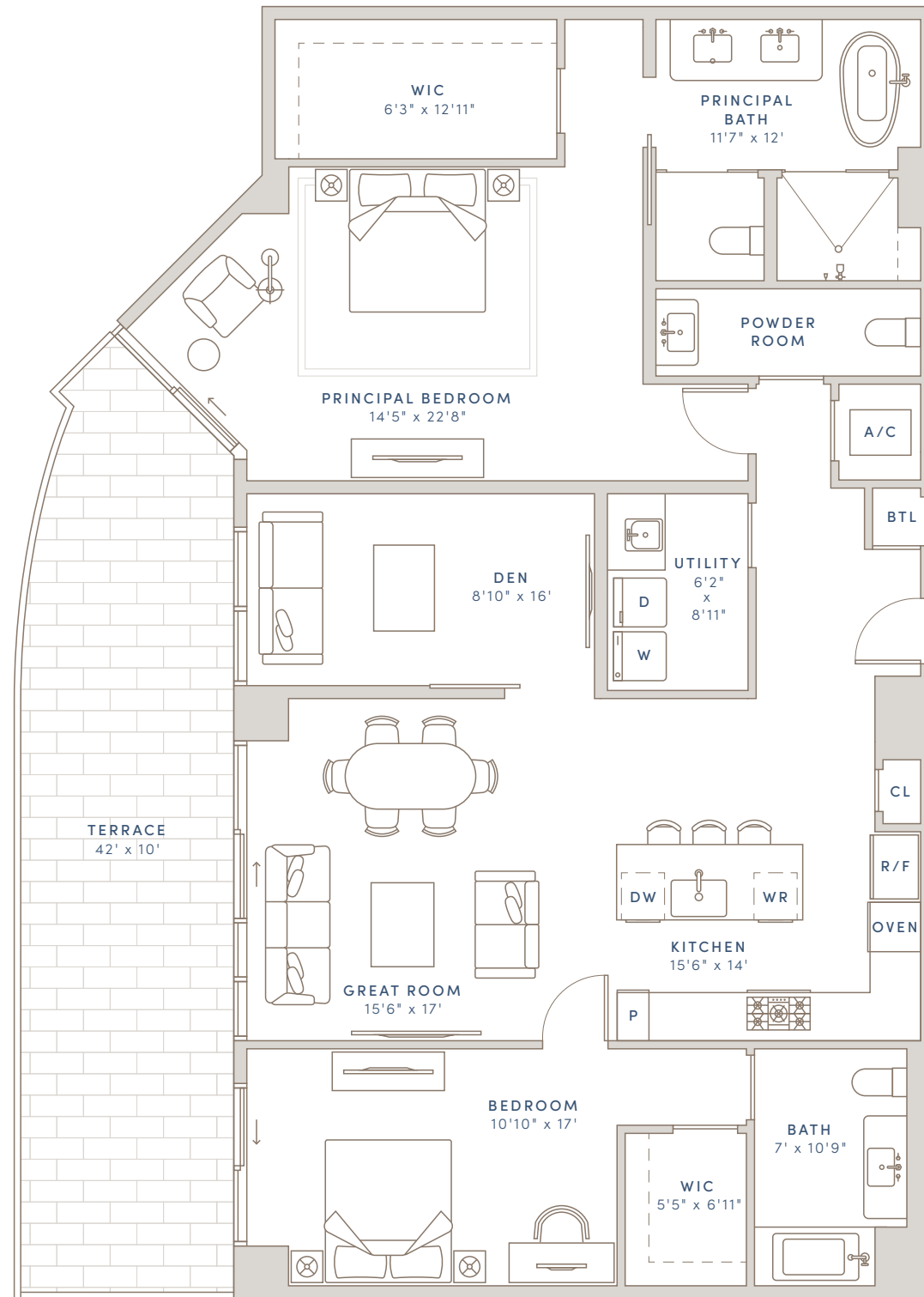
## FLOORS 7-18

2 BEDROOMS + DEN  
2 BATHS  
1 POWDER ROOM

INTERIOR: 1,908 SQ FT  
EXTERIOR: 376 SQ FT  
TOTAL: 2,284 SQ FT

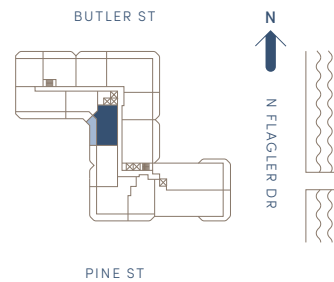
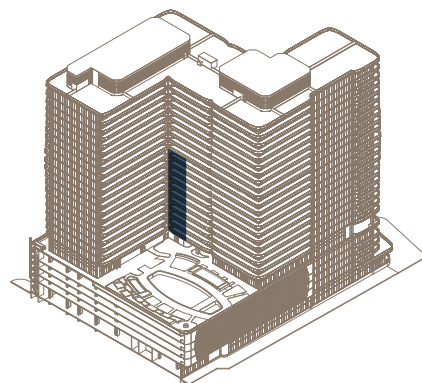
# OLARA

WHERE LIFE FLOWS



AMENITY DECK

TERRACE  
42' x 10'



DEVELOPER  
SAVANNA

ARCHITECT  
ARQUITECTONICA

INTERIOR DESIGN  
GABELLINI SHEPPARD

LANDSCAPE ARCHITECT  
EDSA

CONSTRUCTION TEAM  
SAVCON AND GILBANE

EXCLUSIVE SALES AND MARKETING  
COMPASS DEVELOPMENT  
MARKETING GROUP

Sales Gallery at 300 Butler Street, West Palm Beach, FL 33407

1919 N Flagler Drive · West Palm Beach, FL 33407 · 561-448-3015 · OlaraWestPalmBeach.com

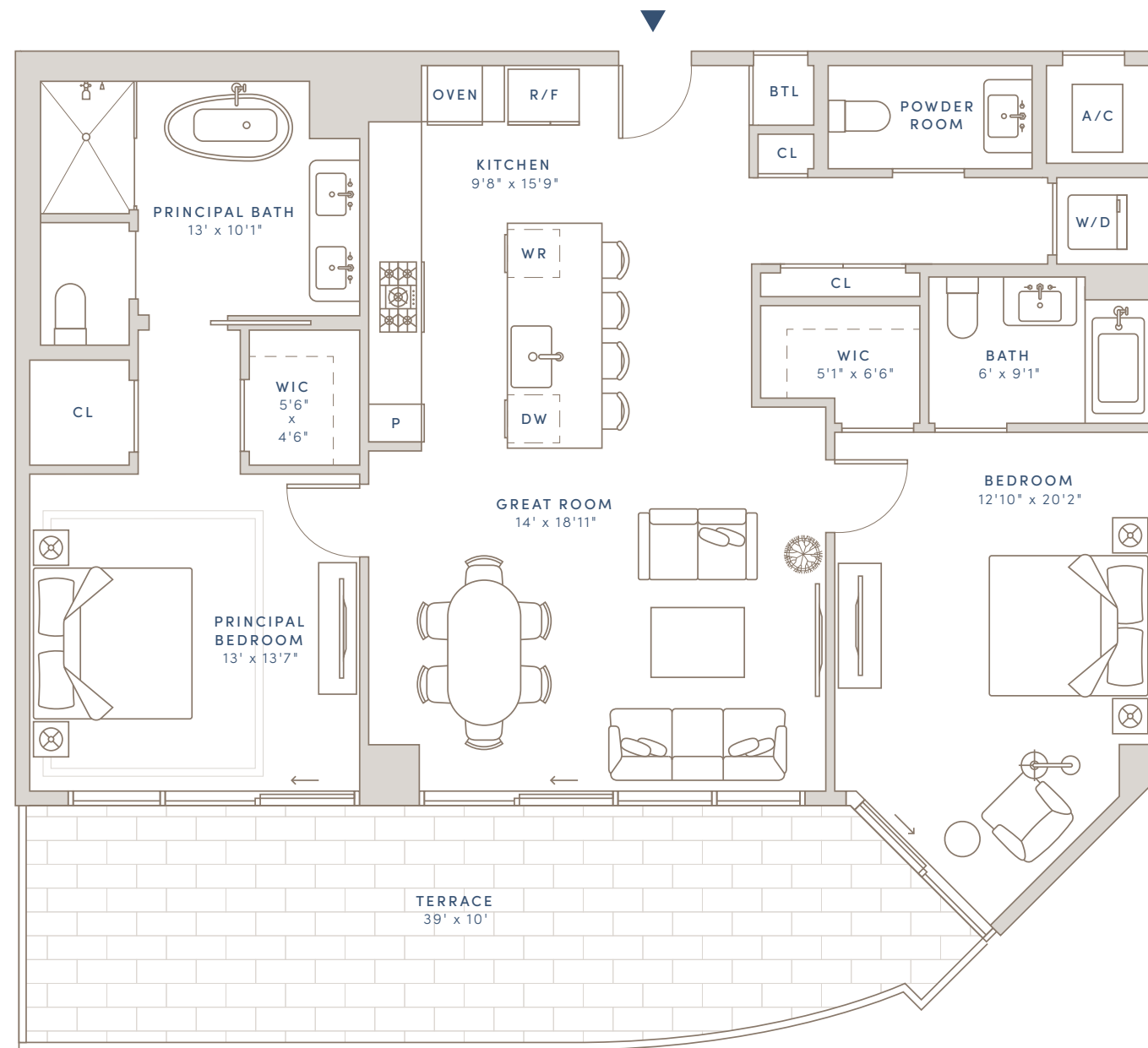
Floorplans and dimensions are approximate, may vary, and are subject to change without notice. Floorplans are conceptual and not to scale. ORAL REPRESENTATIONS CANNOT BE RELIED UPON AS CORRECTLY STATING THE REPRESENTATIONS OF THE DEVELOPER. FOR CORRECT REPRESENTATIONS, MAKE REFERENCE TO THE DOCUMENTS REQUIRED BY SECTION 718.503, FLORIDA STATUTES, TO BE FURNISHED BY A DEVELOPER TO A BUYER OR LESSEE. THE COMPLETE OFFERING TERMS ARE IN A FLORIDA PROSPECTUS AVAILABLE FROM THE DEVELOPER. New York: The Offering Plan for Olara Condominium has been filed with the New York State Department of Law, File No. CP22-0089. The Offering Plan is available from the Sponsor, New Jersey. This advertisement is a solicitation for the sale of units in Olara Condominium. N.J. Reg. No. 22-04-0012. Massachusetts: This Condominium has been registered with the Massachusetts Board of Registration of Real Estate Brokers and Salespersons: F-1277-01-01. California: WARNING: THE CALIFORNIA DEPARTMENT OF REAL ESTATE HAS NOT INSPECTED, EXAMINED, OR QUALIFIED THIS OFFERING. Equal Housing Opportunity

# RESIDENCE L

## FLOORS 7-26

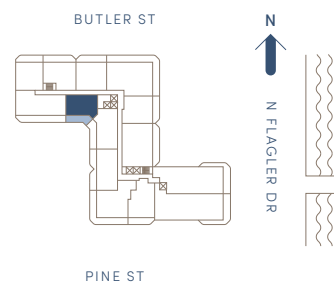
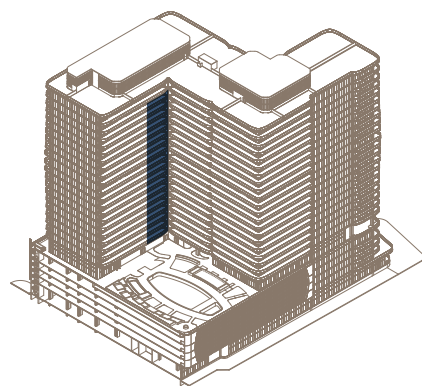
2 BEDROOMS  
2 BATHS  
1 POWDER ROOM

INTERIOR: 1,483 SQ FT  
EXTERIOR: 354 SQ FT  
TOTAL: 1,837 SQ FT



# OLARA

WHERE LIFE FLOWS



AMENITY DECK

DEVELOPER  
SAVANNA  
  
ARCHITECT  
ARQUITECTONICA

INTERIOR DESIGN  
GABELLINI SHEPPARD  
  
LANDSCAPE ARCHITECT  
EDSA

CONSTRUCTION TEAM  
SAVCON AND GILBANE

EXCLUSIVE SALES AND MARKETING  
COMPASS DEVELOPMENT  
MARKETING GROUP

Sales Gallery at 300 Butler Street, West Palm Beach, FL 33407

1919 N Flagler Drive · West Palm Beach, FL 33407 · 561-448-3015 · OlaraWestPalmBeach.com

Floorplans and dimensions are approximate, may vary, and are subject to change without notice. Floorplans are conceptual and not to scale. ORAL REPRESENTATIONS CANNOT BE RELIED UPON AS CORRECTLY STATING THE REPRESENTATIONS OF THE DEVELOPER. FOR CORRECT REPRESENTATIONS, MAKE REFERENCE TO THE DOCUMENTS REQUIRED BY SECTION 718.503, FLORIDA STATUTES, TO BE FURNISHED BY A DEVELOPER TO A BUYER OR LESSEE. THE COMPLETE OFFERING TERMS ARE IN A FLORIDA PROSPECTUS AVAILABLE FROM THE DEVELOPER. New York: The Offering Plan for Olara Condominium has been filed with the New York State Department of Law, File No. CP22-0089. The Offering Plan is available from the Sponsor, New Jersey: This advertisement is a solicitation for the sale of units in Olara Condominium: N.J. Reg. No. 22-04-0012. Massachusetts: This Condominium has been registered with the Massachusetts Board of Registration of Real Estate Brokers and Salespersons: F-1277-01-01. California: WARNING: THE CALIFORNIA DEPARTMENT OF REAL ESTATE HAS NOT INSPECTED, EXAMINED, OR QUALIFIED THIS OFFERING. Equal Housing Opportunity

# RESIDENCE M

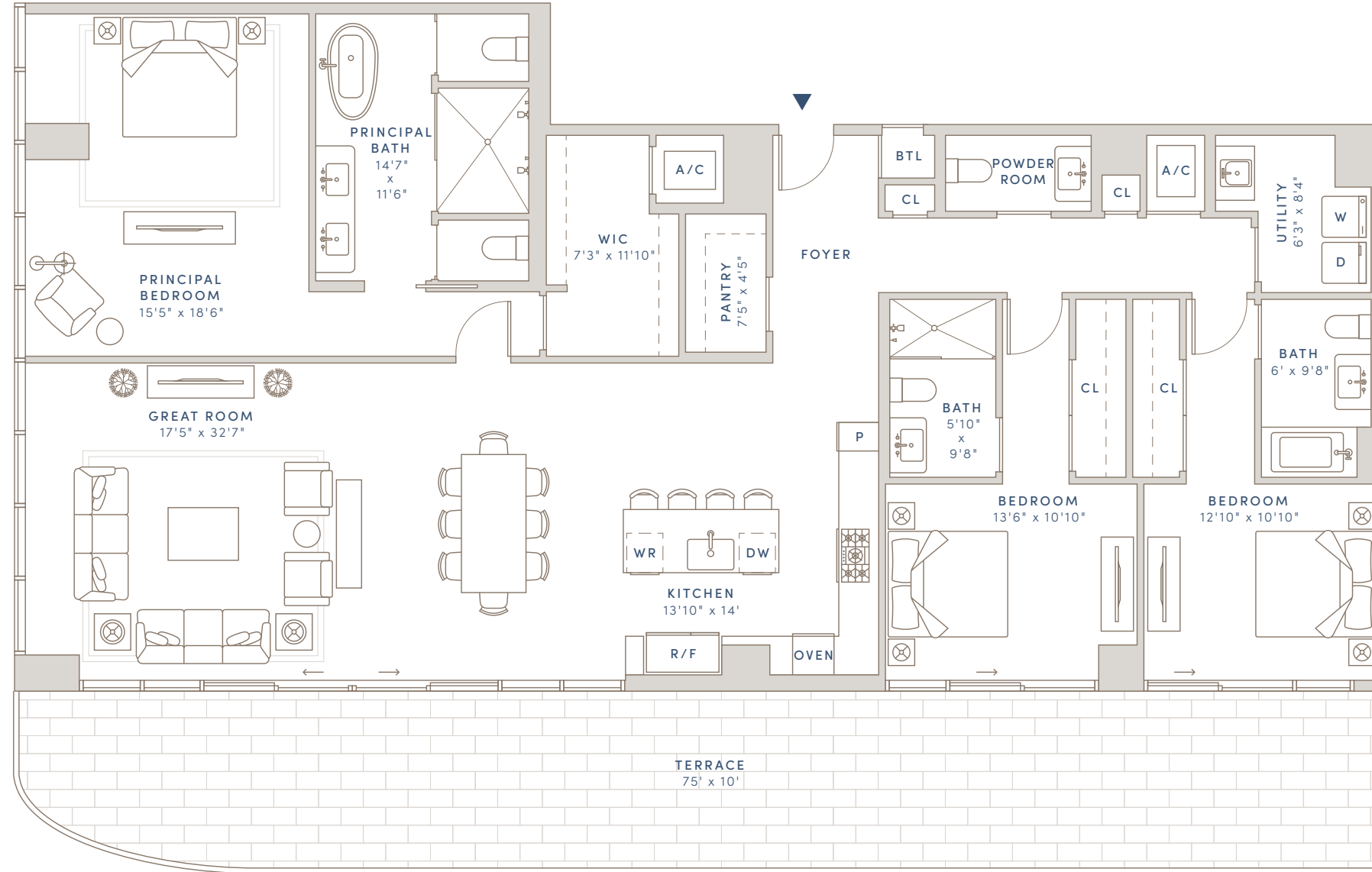
## FLOORS 7-26

3 BEDROOMS  
3 BATHS  
1 POWDER ROOM

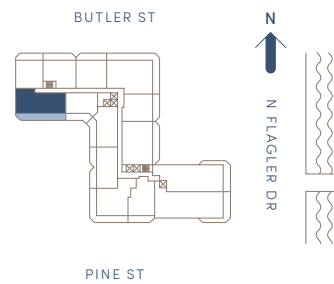
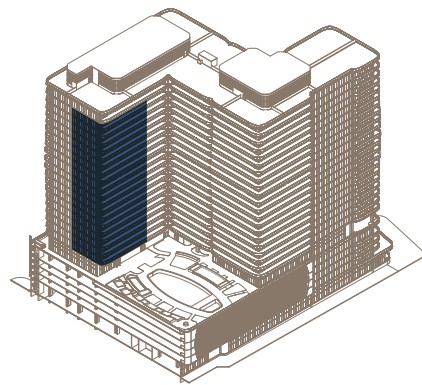
INTERIOR: 2,489 SQ FT  
EXTERIOR: 750 SQ FT  
TOTAL: 3,239 SQ FT

# OLARA

WHERE LIFE FLOWS



AMENITY DECK



DEVELOPER  
SAVANNA

ARCHITECT  
ARQUITECTONICA

INTERIOR DESIGN  
GABELLINI SHEPPARD

LANDSCAPE ARCHITECT  
EDSA

CONSTRUCTION TEAM  
SAVCON AND GILBANE

EXCLUSIVE SALES AND MARKETING  
COMPASS DEVELOPMENT  
MARKETING GROUP

Sales Gallery at 300 Butler Street, West Palm Beach, FL 33407

1919 N Flagler Drive · West Palm Beach, FL 33407 · 561-448-3015 · OlaraWestPalmBeach.com

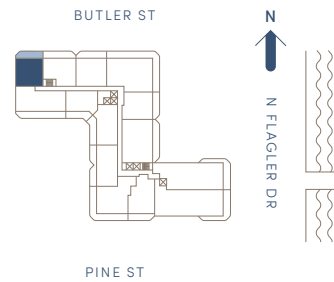
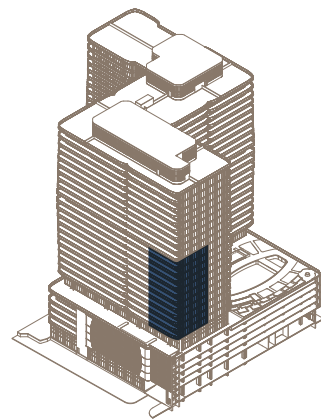
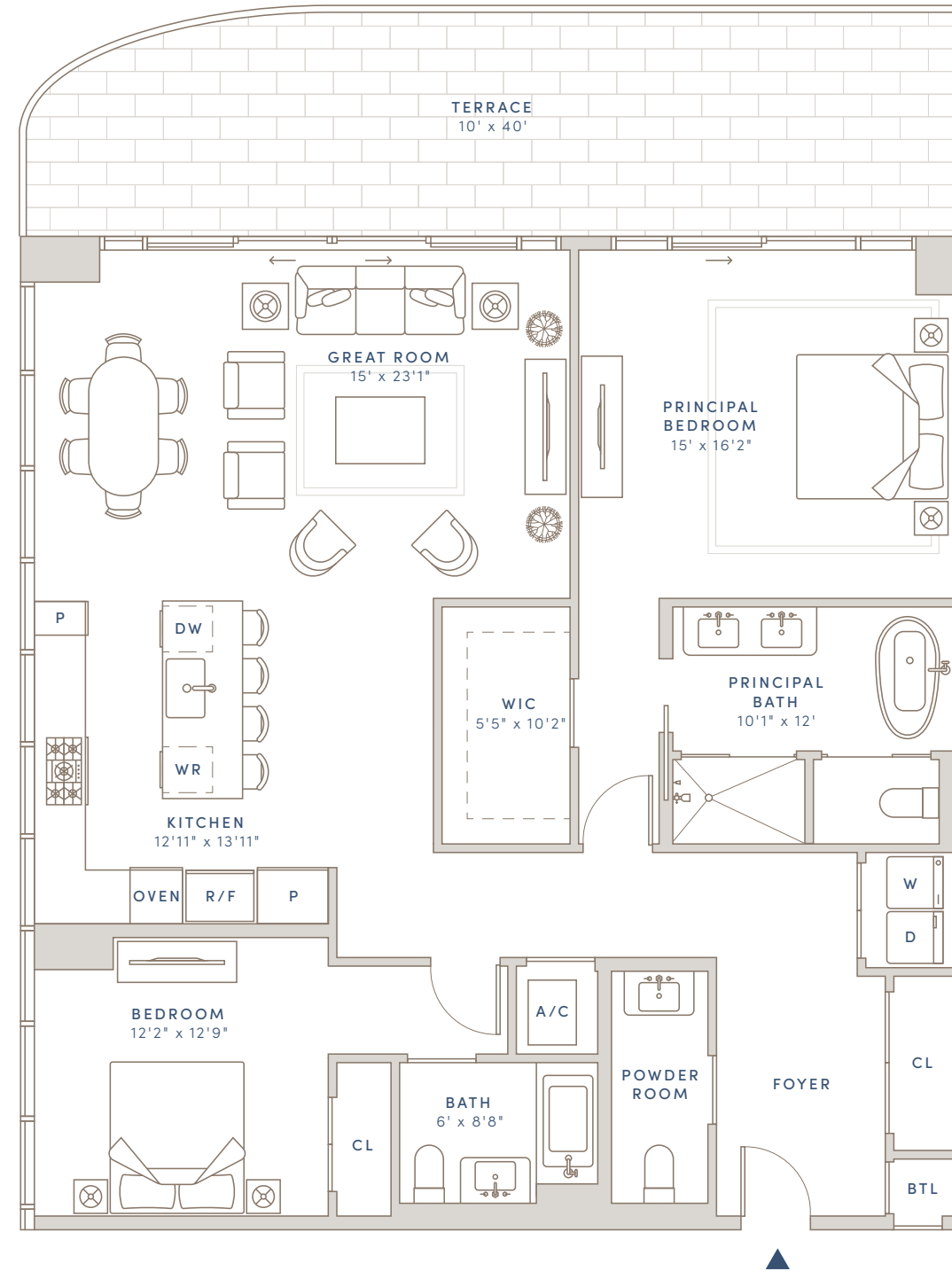
Floorplans and dimensions are approximate, may vary, and are subject to change without notice. Floorplans are conceptual and not to scale. ORAL REPRESENTATIONS CANNOT BE RELIED UPON AS CORRECTLY STATING THE REPRESENTATIONS OF THE DEVELOPER. FOR CORRECT REPRESENTATIONS, MAKE REFERENCE TO THE DOCUMENTS REQUIRED BY SECTION 718.503, FLORIDA STATUTES, TO BE FURNISHED BY A DEVELOPER TO A BUYER OR LESSEE. THE COMPLETE OFFERING TERMS ARE IN A FLORIDA PROSPECTUS AVAILABLE FROM THE DEVELOPER. New York: The Offering Plan for Olara Condominium has been filed with the New York State Department of Law, File No. CP22-0089. The Offering Plan is available from the Sponsor, New Jersey: This advertisement is a solicitation for the sale of units in Olara Condominium: N.J. Reg. No. 22-04-0012. Massachusetts: This Condominium has been registered with the Massachusetts Board of Registration of Real Estate Brokers and Salespersons: F-1277-01-01. California: WARNING: THE CALIFORNIA DEPARTMENT OF REAL ESTATE HAS NOT INSPECTED, EXAMINED, OR QUALIFIED THIS OFFERING. Equal Housing Opportunity

# RESIDENCE N

## FLOORS 7-18

2 BEDROOMS  
2 BATHS  
1 POWDER ROOM

INTERIOR: 1,741 SQ FT  
EXTERIOR: 381 SQ FT  
TOTAL: 2,122 SQ FT



DEVELOPER  
SAVANNA

ARCHITECT  
ARQUITECTONICA

INTERIOR DESIGN  
GABELLINI SHEPPARD

LANDSCAPE ARCHITECT  
EDSA

CONSTRUCTION TEAM  
SAVCON AND GILBANE

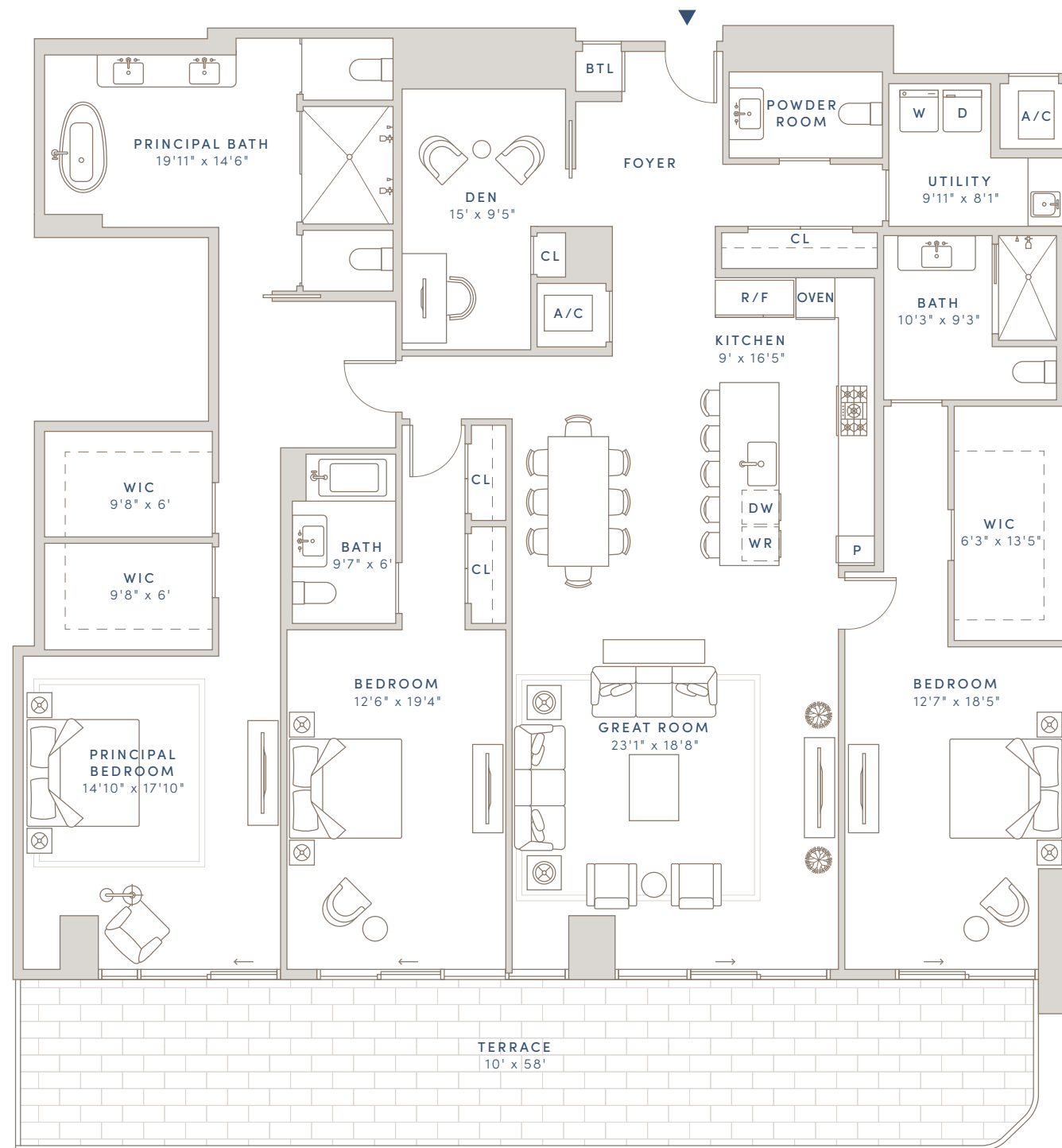
EXCLUSIVE SALES AND MARKETING  
COMPASS DEVELOPMENT  
MARKETING GROUP

# RESIDENCE 0

## FLOORS 19-26

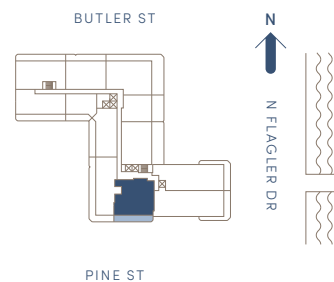
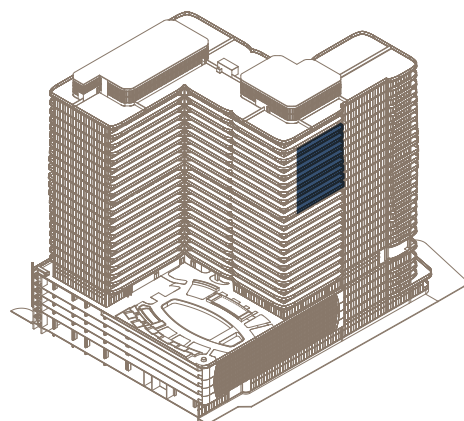
3 BEDROOMS + DEN  
3 BATHS  
1 POWDER ROOM

INTERIOR: 3,034 SQ FT  
EXTERIOR: 565 SQ FT  
TOTAL: 3,599 SQ FT



# OLARA

WHERE LIFE FLOWS



DEVELOPER  
SAVANNA

ARCHITECT  
ARQUITECTONICA

INTERIOR DESIGN  
GABELLINI SHEPPARD

LANDSCAPE ARCHITECT  
EDSA

CONSTRUCTION TEAM  
SAVCON AND GILBANE

EXCLUSIVE SALES AND MARKETING  
COMPASS DEVELOPMENT  
MARKETING GROUP

Sales Gallery at 300 Butler Street, West Palm Beach, FL 33407

1919 N Flagler Drive · West Palm Beach, FL 33407 · 561-448-3015 · OlaraWestPalmBeach.com

Floorplans and dimensions are approximate, may vary, and are subject to change without notice. Floorplans are conceptual and not to scale. ORAL REPRESENTATIONS CANNOT BE RELIED UPON AS CORRECTLY STATING THE REPRESENTATIONS OF THE DEVELOPER. FOR CORRECT REPRESENTATIONS, MAKE REFERENCE TO THE DOCUMENTS REQUIRED BY SECTION 718.503, FLORIDA STATUTES, TO BE FURNISHED BY A DEVELOPER TO A BUYER OR LESSEE. THE COMPLETE OFFERING TERMS ARE IN A FLORIDA PROSPECTUS AVAILABLE FROM THE DEVELOPER. New York: The Offering Plan for Olara Condominium has been filed with the New York State Department of Law, File No. CP22-0089. The Offering Plan is available from the Sponsor. New Jersey: This advertisement is a solicitation for the sale of units in Olara Condominium. N.J. Reg. No. 22-04-0012. Massachusetts: This Condominium has been registered with the Massachusetts Board of Registration of Real Estate Brokers and Salespersons: F-1277-01-01. California: WARNING: THE CALIFORNIA DEPARTMENT OF REAL ESTATE HAS NOT INSPECTED, EXAMINED, OR QUALIFIED THIS OFFERING. Equal Housing Opportunity

# RESIDENCE P

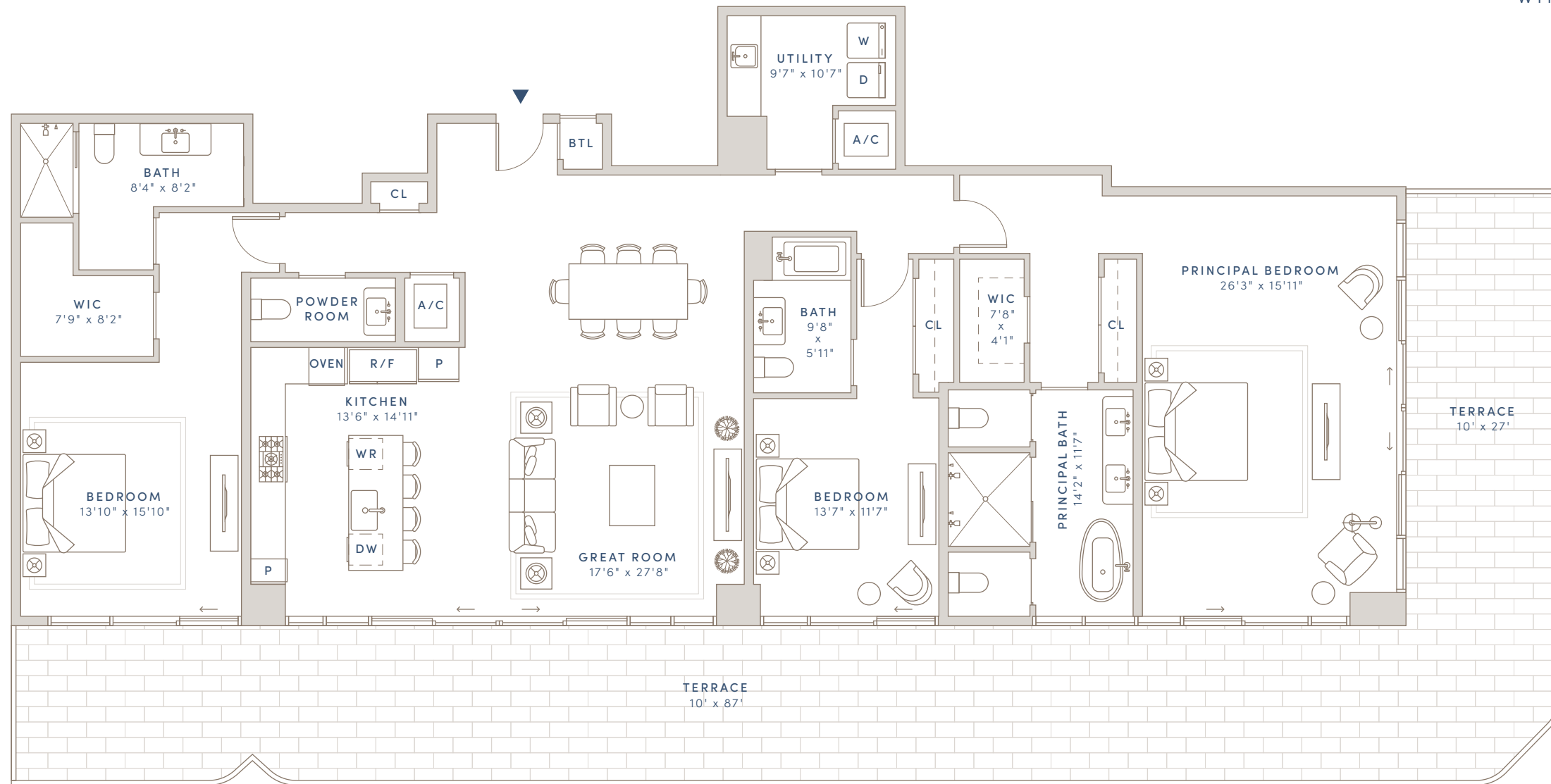
# OLARA

WHERE LIFE FLOWS

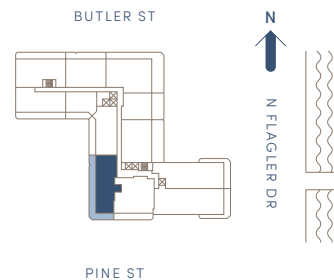
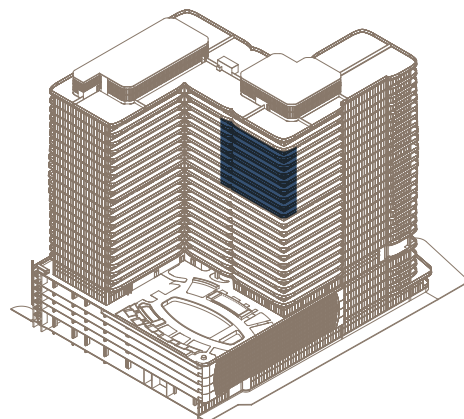
## FLOORS 19-26

3 BEDROOMS  
3 BATHS  
1 POWDER ROOM

INTERIOR: 2,656 SQ FT  
EXTERIOR: 1,196 SQ FT  
TOTAL: 3,852 SQ FT



AMENITY DECK



DEVELOPER  
SAVANNA

ARCHITECT  
ARQUITECTONICA

INTERIOR DESIGN  
GABELLINI SHEPPARD

LANDSCAPE ARCHITECT  
EDSA

CONSTRUCTION TEAM  
SAVCON AND GILBANE

EXCLUSIVE SALES AND MARKETING  
COMPASS DEVELOPMENT  
MARKETING GROUP

Sales Gallery at 300 Butler Street, West Palm Beach, FL 33407

1919 N Flagler Drive · West Palm Beach, FL 33407 · 561-448-3015 · OlaraWestPalmBeach.com

Floorplans and dimensions are approximate, may vary, and are subject to change without notice. Floorplans are conceptual and not to scale. ORAL REPRESENTATIONS CANNOT BE RELIED UPON AS CORRECTLY STATING THE REPRESENTATIONS OF THE DEVELOPER. FOR CORRECT REPRESENTATIONS, MAKE REFERENCE TO THE DOCUMENTS REQUIRED BY SECTION 718.503, FLORIDA STATUTES, TO BE FURNISHED BY A DEVELOPER TO A BUYER OR LESSEE. THE COMPLETE OFFERING TERMS ARE IN A FLORIDA PROSPECTUS AVAILABLE FROM THE DEVELOPER. New York: The Offering Plan for Olara Condominium has been filed with the New York State Department of Law, File No. CP22-0089. The Offering Plan is available from the Sponsor, New Jersey. This advertisement is a solicitation for the sale of units in Olara Condominium: N.J. Reg. No. 22-04-0012. Massachusetts: This Condominium has been registered with the Massachusetts Board of Registration of Real Estate Brokers and Salespersons: F-1277-01-01. California: WARNING: THE CALIFORNIA DEPARTMENT OF REAL ESTATE HAS NOT INSPECTED, EXAMINED, OR QUALIFIED THIS OFFERING. Equal Housing Opportunity

# RESIDENCE Q

## FLOORS 19-26

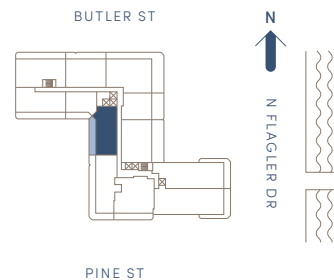
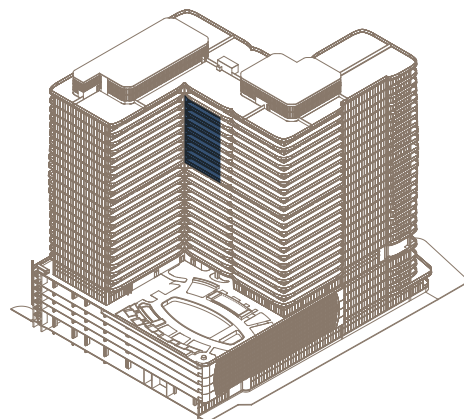
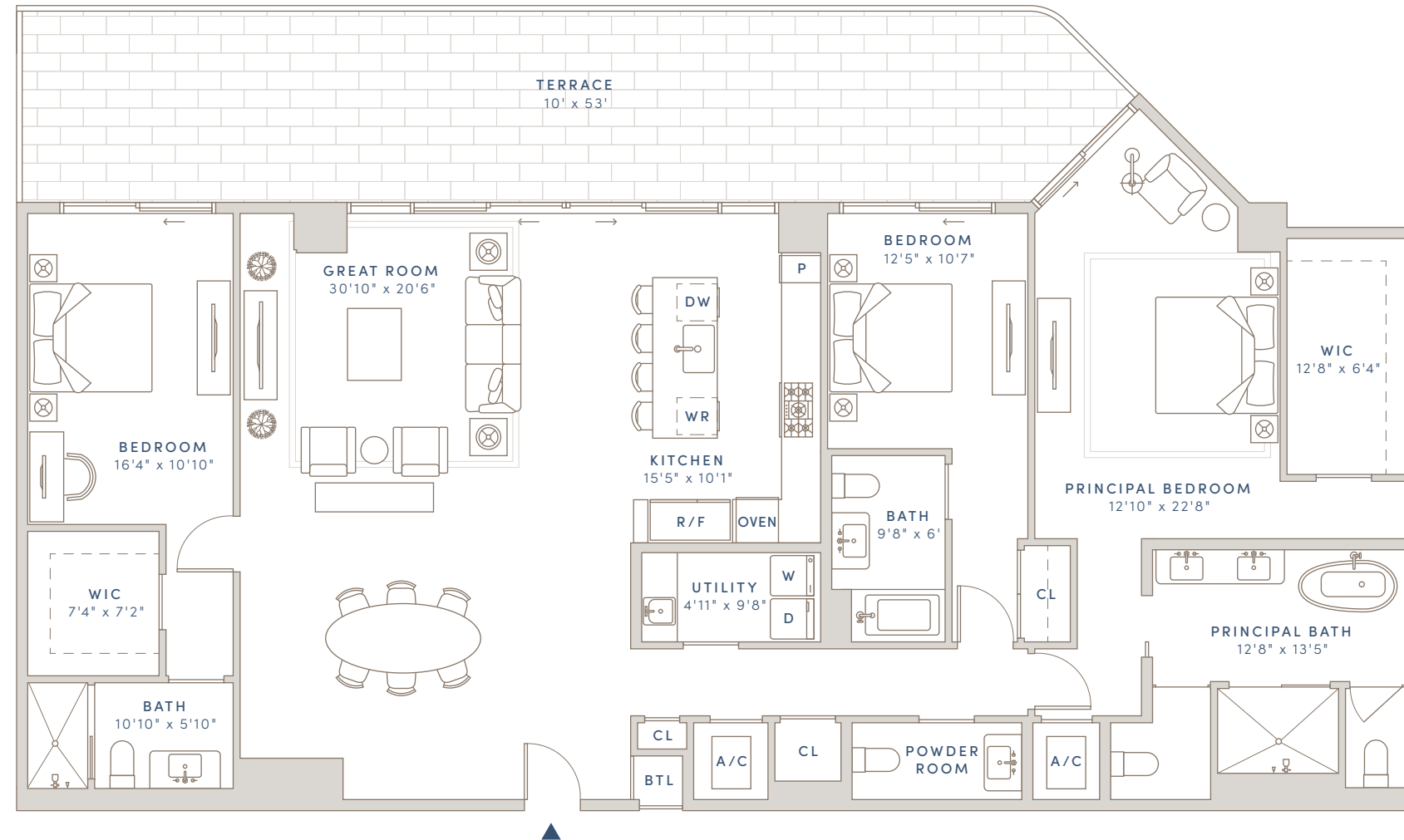
3 BEDROOMS  
3 BATHS  
1 POWDER ROOM

INTERIOR: 2,378 SQ FT  
EXTERIOR: 546 SQ FT  
TOTAL: 2,924 SQ FT

# OLARA

WHERE LIFE FLOWS

AMENITY DECK



DEVELOPER  
SAVANNA

ARCHITECT  
ARQUITECTONICA

INTERIOR DESIGN  
GABELLINI SHEPPARD

LANDSCAPE ARCHITECT  
EDSA

CONSTRUCTION TEAM  
SAVCON AND GILBANE

EXCLUSIVE SALES AND MARKETING  
COMPASS DEVELOPMENT  
MARKETING GROUP

Sales Gallery at 300 Butler Street, West Palm Beach, FL 33407

1919 N Flagler Drive · West Palm Beach, FL 33407 · 561-448-3015 · OlaraWestPalmBeach.com

Floorplans and dimensions are approximate, may vary, and are subject to change without notice. Floorplans are conceptual and not to scale. ORAL REPRESENTATIONS CANNOT BE RELIED UPON AS CORRECTLY STATING THE REPRESENTATIONS OF THE DEVELOPER. FOR CORRECT REPRESENTATIONS, MAKE REFERENCE TO THE DOCUMENTS REQUIRED BY SECTION 718.503, FLORIDA STATUTES, TO BE FURNISHED BY A DEVELOPER TO A BUYER OR LESSEE. THE COMPLETE OFFERING TERMS ARE IN A FLORIDA PROSPECTUS AVAILABLE FROM THE DEVELOPER. New York: The Offering Plan for Olara Condominium has been filed with the New York State Department of Law, File No. CP22-0089. The Offering Plan is available from the Sponsor, New Jersey: This advertisement is a solicitation for the sale of units in Olara Condominium: N.J. Reg. No. 22-04-0012. Massachusetts: This Condominium has been registered with the Massachusetts Board of Registration of Real Estate Brokers and Salespersons: F-1277-01-01. California: WARNING: THE CALIFORNIA DEPARTMENT OF REAL ESTATE HAS NOT INSPECTED, EXAMINED, OR QUALIFIED THIS OFFERING. Equal Housing Opportunity

# RESIDENCE T

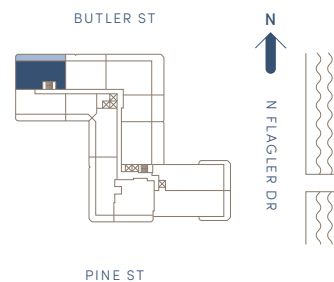
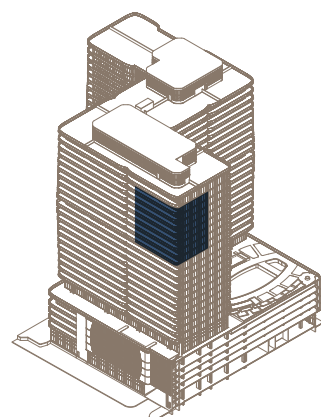
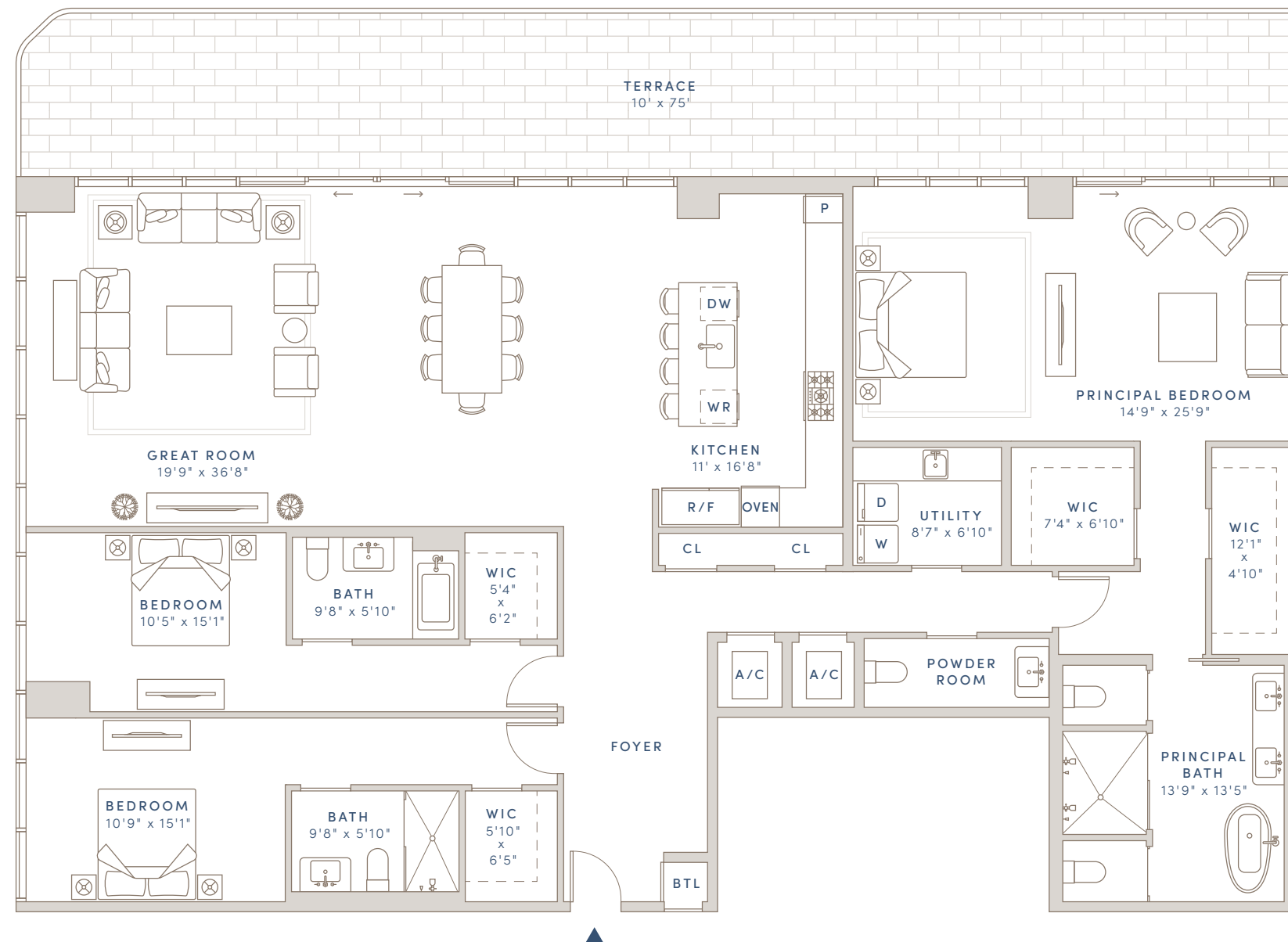
## FLOORS 19-26

3 BEDROOMS  
3 BATHS  
1 POWDER ROOM

INTERIOR: 2,999 SQ FT  
EXTERIOR: 723 SQ FT  
TOTAL: 3,722 SQ FT

# OLARA

WHERE LIFE FLOWS



DEVELOPER  
SAVANNA

ARCHITECT  
ARQUITECTONICA

INTERIOR DESIGN  
GABELLINI SHEPPARD

LANDSCAPE ARCHITECT  
EDSA

CONSTRUCTION TEAM  
SAVCON AND GILBANE

EXCLUSIVE SALES AND MARKETING  
COMPASS DEVELOPMENT  
MARKETING GROUP

Sales Gallery at 300 Butler Street, West Palm Beach, FL 33407

1919 N Flagler Drive · West Palm Beach, FL 33407 · 561-448-3015 · OlaraWestPalmBeach.com

Floorplans and dimensions are approximate, may vary, and are subject to change without notice. Floorplans are conceptual and not to scale. ORAL REPRESENTATIONS CANNOT BE RELIED UPON AS CORRECTLY STATING THE REPRESENTATIONS OF THE DEVELOPER. FOR CORRECT REPRESENTATIONS, MAKE REFERENCE TO THE DOCUMENTS REQUIRED BY SECTION 718.503, FLORIDA STATUTES, TO BE FURNISHED BY A DEVELOPER TO A BUYER OR LESSEE. THE COMPLETE OFFERING TERMS ARE IN A FLORIDA PROSPECTUS AVAILABLE FROM THE DEVELOPER. New York: The Offering Plan for Olara Condominium has been filed with the New York State Department of Law, File No. CP22-0089. The Offering Plan is available from the Sponsor, New Jersey: This advertisement is a solicitation for the sale of units in Olara Condominium: N.J. Reg. No. 22-04-0012. Massachusetts: This Condominium has been registered with the Massachusetts Board of Registration of Real Estate Brokers and Salespersons: F-1277-01-01. California: WARNING: THE CALIFORNIA DEPARTMENT OF REAL ESTATE HAS NOT INSPECTED, EXAMINED, OR QUALIFIED THIS OFFERING. Equal Housing Opportunity

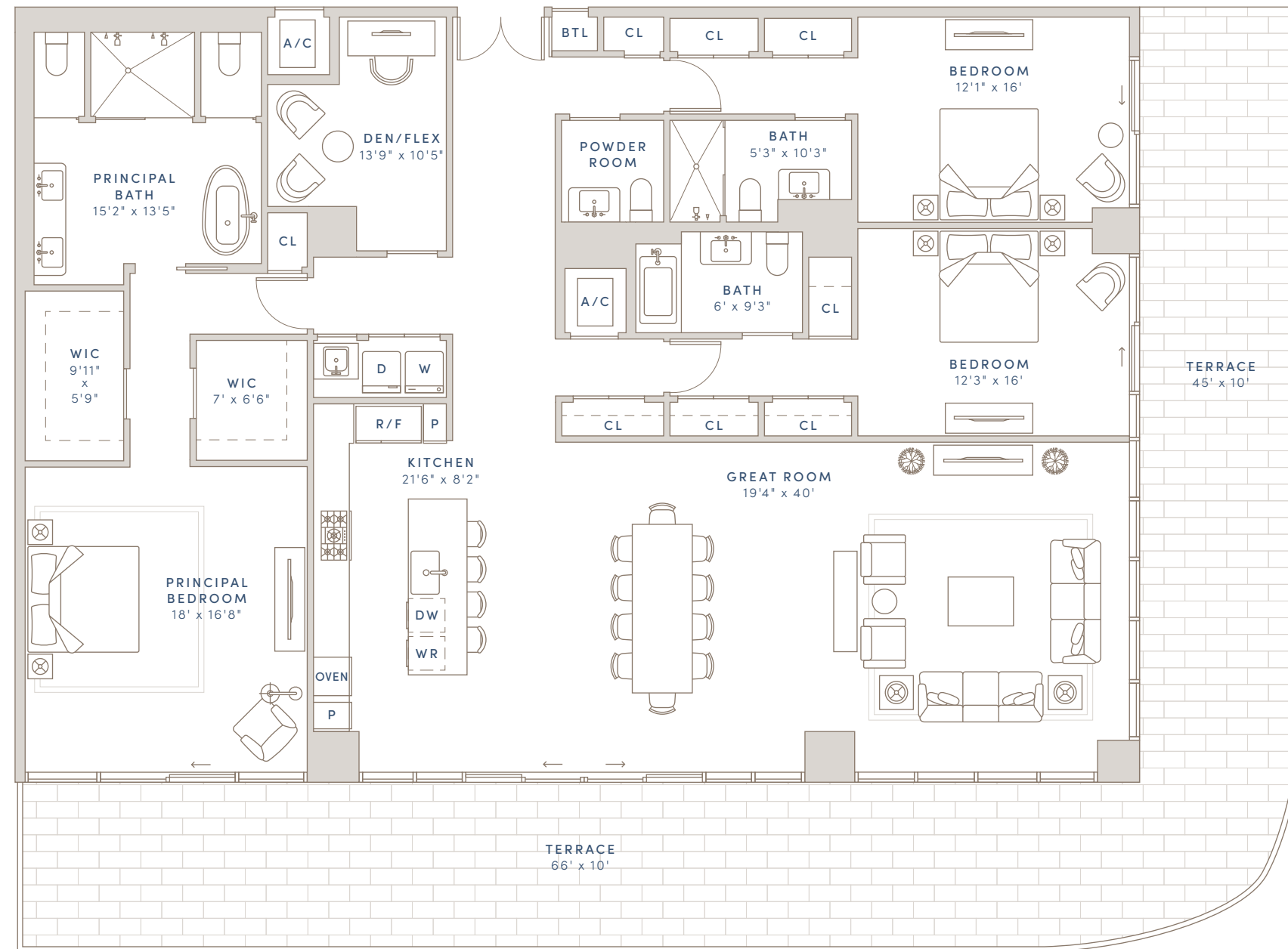


# RESIDENCE V

## FLOORS 4-5

3 BEDROOMS + DEN  
3 BATHS  
1 POWDER ROOM

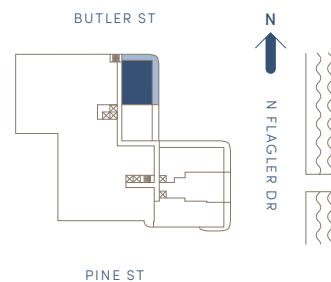
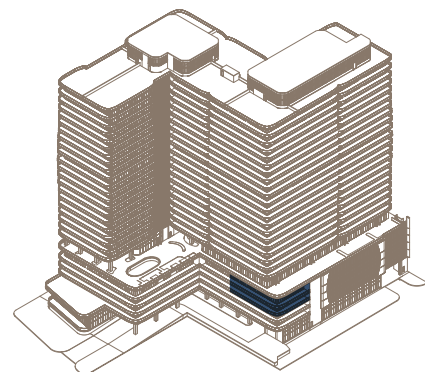
INTERIOR: 3,008 SQ FT  
EXTERIOR: 1,110 SQ FT  
TOTAL: 4,118 SQ FT



# OLARA

WHERE LIFE FLOWS

INTRACOASTAL



DEVELOPER  
SAVANNA

ARCHITECT  
ARQUITECTONICA

INTERIOR DESIGN  
GABELLINI SHEPPARD

LANDSCAPE ARCHITECT  
EDSA

CONSTRUCTION TEAM  
SAVCON AND GILBANE

EXCLUSIVE SALES AND MARKETING  
COMPASS DEVELOPMENT  
MARKETING GROUP

Sales Gallery at 300 Butler Street, West Palm Beach, FL 33407

1919 N Flagler Drive · West Palm Beach, FL 33407 · 561-448-3015 · OlaraWestPalmBeach.com

Floorplans and dimensions are approximate, may vary, and are subject to change without notice. Floorplans are conceptual and not to scale. ORAL REPRESENTATIONS CANNOT BE RELIED UPON AS CORRECTLY STATING THE REPRESENTATIONS OF THE DEVELOPER. FOR CORRECT REPRESENTATIONS, MAKE REFERENCE TO THE DOCUMENTS REQUIRED BY SECTION 718.503, FLORIDA STATUTES, TO BE FURNISHED BY A DEVELOPER TO A BUYER OR LESSEE. THE COMPLETE OFFERING TERMS ARE IN A FLORIDA PROSPECTUS AVAILABLE FROM THE DEVELOPER. New York: The Offering Plan for Olara Condominium has been filed with the New York State Department of Law, File No. CP22-0089. The Offering Plan is available from the Sponsor, New Jersey: This advertisement is a solicitation for the sale of units in Olara Condominium: N.J. Reg. No. 22-04-0012. Massachusetts: This Condominium has been registered with the Massachusetts Board of Registration of Real Estate Brokers and Salespersons: F-1277-01-01. California: WARNING: THE CALIFORNIA DEPARTMENT OF REAL ESTATE HAS NOT INSPECTED, EXAMINED, OR QUALIFIED THIS OFFERING. Equal Housing Opportunity

# RESIDENCE W

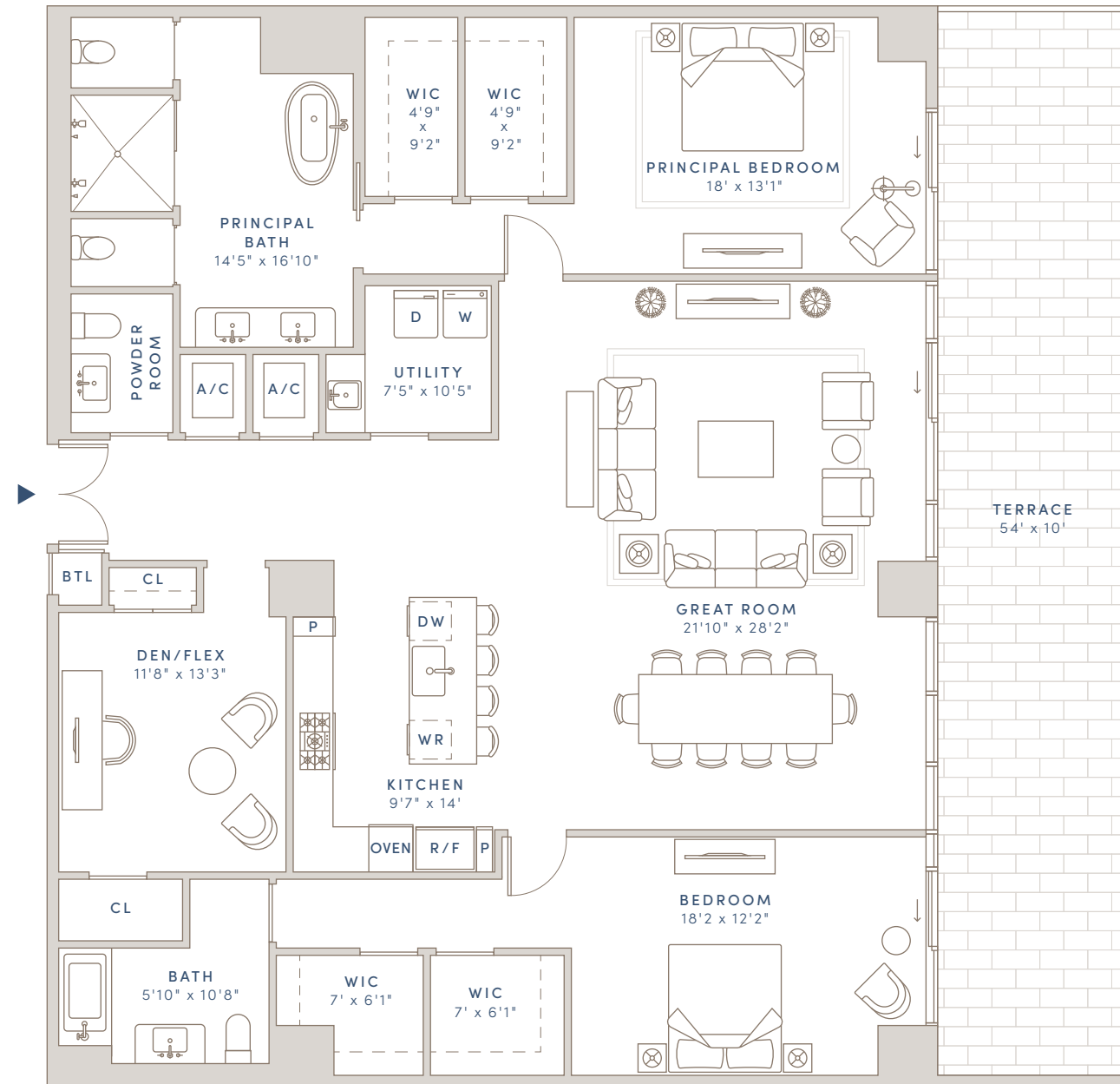
## FLOORS 4-5

2 BEDROOMS + DEN  
2 BATHS  
1 POWDER ROOM

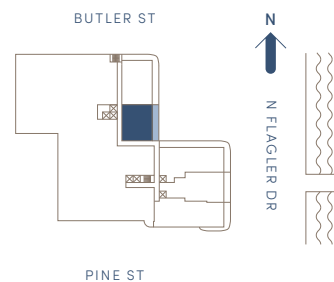
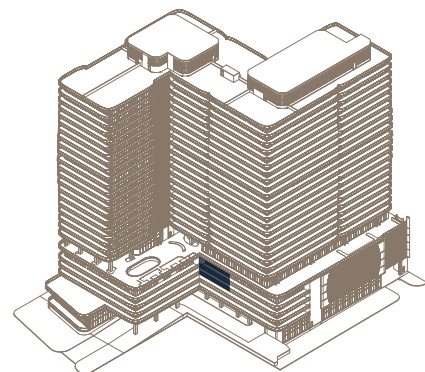
INTERIOR: 2,498 SQ FT  
EXTERIOR: 540 SQ FT  
TOTAL: 3,038 SQ FT

# OLARA

WHERE LIFE FLOWS



INTRACOASTAL  
~~~~~>



DEVELOPER  
SAVANNA

ARCHITECT  
ARQUITECTONICA

INTERIOR DESIGN  
GABELLINI SHEPPARD

LANDSCAPE ARCHITECT  
EDSA

CONSTRUCTION TEAM  
SAVCON AND GILBANE

EXCLUSIVE SALES AND MARKETING  
COMPASS DEVELOPMENT  
MARKETING GROUP

Sales Gallery at 300 Butler Street, West Palm Beach, FL 33407

1919 N Flagler Drive · West Palm Beach, FL 33407 · 561-448-3015 · OlaraWestPalmBeach.com

Floorplans and dimensions are approximate, may vary, and are subject to change without notice. Floorplans are conceptual and not to scale. ORAL REPRESENTATIONS CANNOT BE RELIED UPON AS CORRECTLY STATING THE REPRESENTATIONS OF THE DEVELOPER. FOR CORRECT REPRESENTATIONS, MAKE REFERENCE TO THE DOCUMENTS REQUIRED BY SECTION 718.503, FLORIDA STATUTES, TO BE FURNISHED BY A DEVELOPER TO A BUYER OR LESSEE. THE COMPLETE OFFERING TERMS ARE IN A FLORIDA PROSPECTUS AVAILABLE FROM THE DEVELOPER. New York: The Offering Plan for Olara Condominium has been filed with the New York State Department of Law, File No. CP22-0089. The Offering Plan is available from the Sponsor, New Jersey: This advertisement is a solicitation for the sale of units in Olara Condominium: N.J. Reg. No. 22-04-0012. Massachusetts: This Condominium has been registered with the Massachusetts Board of Registration of Real Estate Brokers and Salespersons: F-1277-01-01. California: WARNING: THE CALIFORNIA DEPARTMENT OF REAL ESTATE HAS NOT INSPECTED, EXAMINED, OR QUALIFIED THIS OFFERING. Equal Housing Opportunity

# RESIDENCE 207, 307, 403, 503

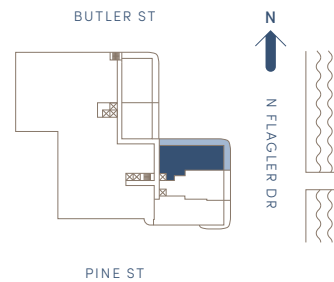
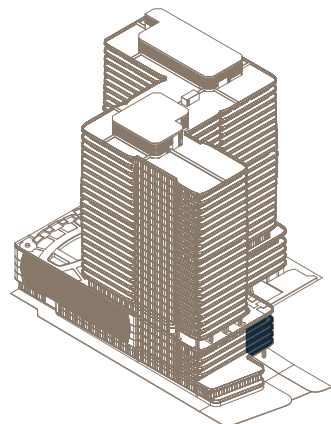
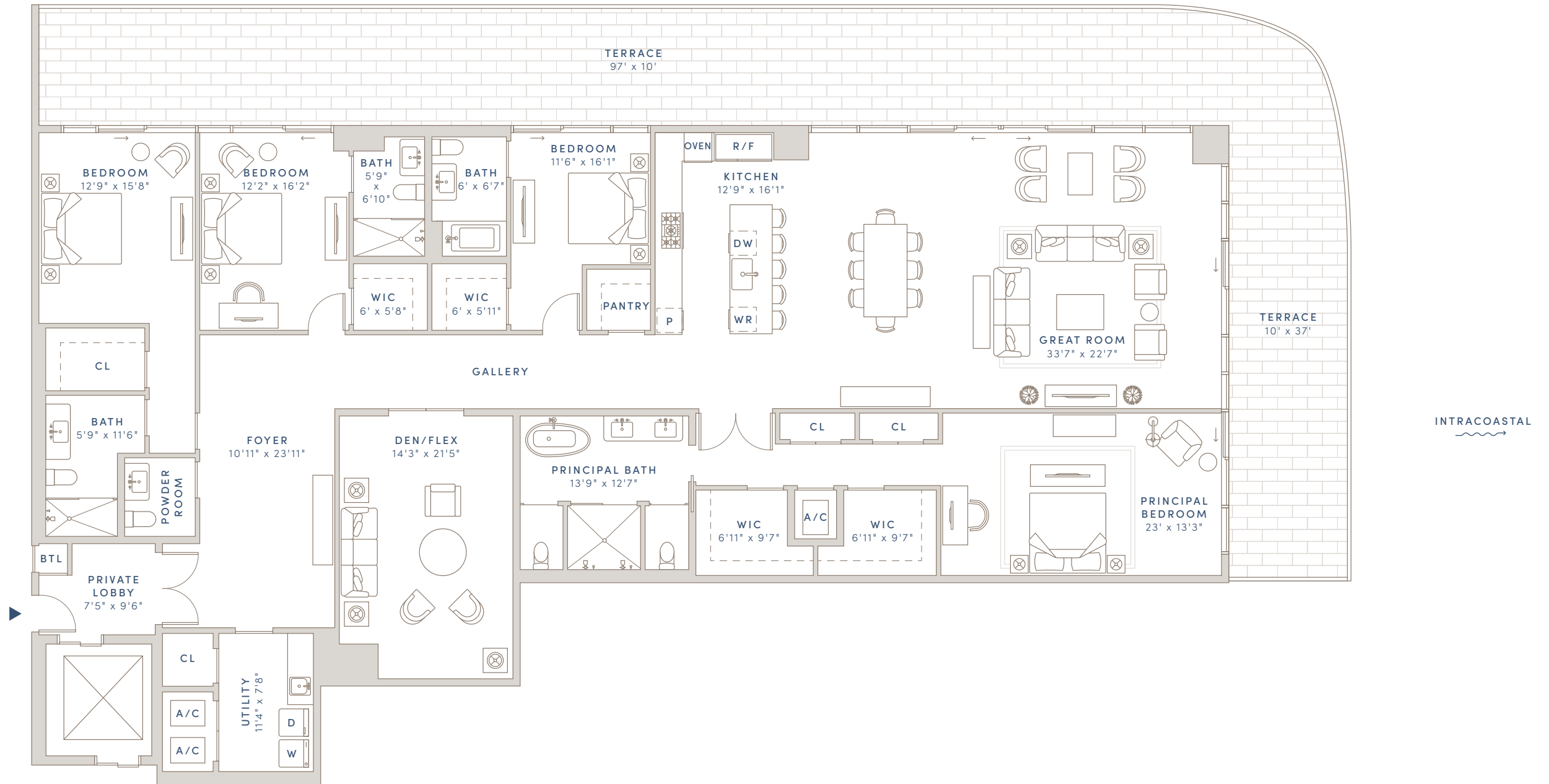
# OLARA

WHERE LIFE FLOWS

## FLOORS 2-5

4 BEDROOMS + DEN  
4 BATHS  
1 POWDER ROOM

INTERIOR: 4,038 SQ FT  
EXTERIOR: 1,340 SQ FT  
TOTAL: 5,378 SQ FT



DEVELOPER  
SAVANNA

ARCHITECT  
ARQUITECTONICA

INTERIOR DESIGN  
GABELLINI SHEPPARD

LANDSCAPE ARCHITECT  
EDSA

CONSTRUCTION TEAM  
SAVCON AND GILBANE

EXCLUSIVE SALES AND MARKETING  
COMPASS DEVELOPMENT  
MARKETING GROUP

Sales Gallery at 300 Butler Street, West Palm Beach, FL 33407

1919 N Flagler Drive · West Palm Beach, FL 33407 · 561-448-3015 · OlaraWestPalmBeach.com

Floorplans and dimensions are approximate, may vary, and are subject to change without notice. Floorplans are conceptual and not to scale. ORAL REPRESENTATIONS CANNOT BE RELIED UPON AS CORRECTLY STATING THE REPRESENTATIONS OF THE DEVELOPER. FOR CORRECT REPRESENTATIONS, MAKE REFERENCE TO THE DOCUMENTS REQUIRED BY SECTION 718.503, FLORIDA STATUTES, TO BE FURNISHED BY A DEVELOPER TO A BUYER OR LESSEE. THE COMPLETE OFFERING TERMS ARE IN A FLORIDA PROSPECTUS AVAILABLE FROM THE DEVELOPER. New York: The Offering Plan for Olara Condominium has been filed with the New York State Department of Law, File No. CP22-0089. The Offering Plan is available from the Sponsor, New Jersey: This advertisement is a solicitation for the sale of units in Olara Condominium: N.J. Reg. No. 22-04-0012. Massachusetts: This Condominium has been registered with the Massachusetts Board of Registration of Real Estate Brokers and Salespersons: F-1277-01-01. California: WARNING: THE CALIFORNIA DEPARTMENT OF REAL ESTATE HAS NOT INSPECTED, EXAMINED, OR QUALIFIED THIS OFFERING. Equal Housing Opportunity

# RESIDENCE 208

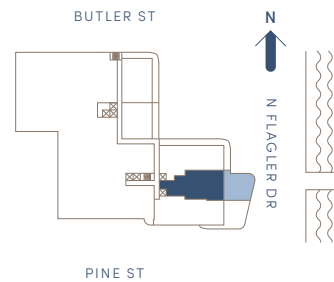
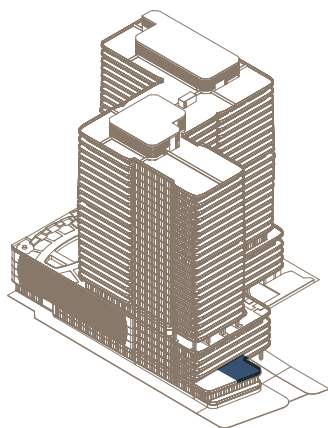
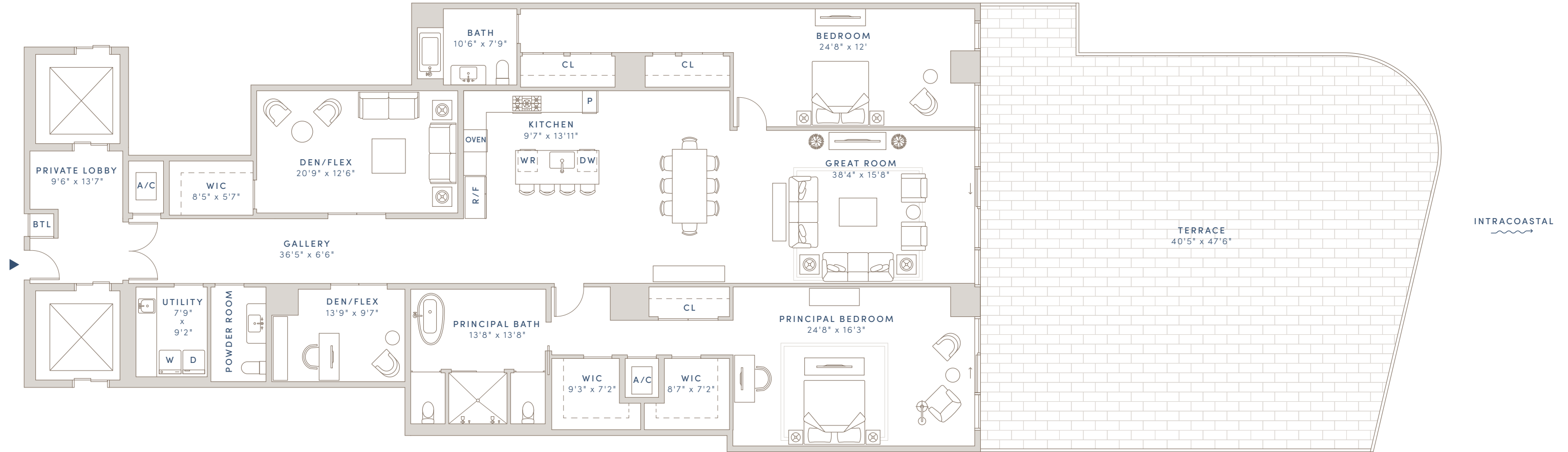
# OLARA

WHERE LIFE FLOWS

## FLOOR 2

2 BEDROOMS + DEN  
2 BATHS  
1 POWDER ROOM

INTERIOR: 3,402 SQ FT  
EXTERIOR: 1,809 SQ FT  
TOTAL: 5,211 SQ FT



DEVELOPER  
SAVANNA

ARCHITECT  
ARQUITECTONICA

INTERIOR DESIGN  
GABELLINI SHEPPARD

LANDSCAPE ARCHITECT  
EDSA

CONSTRUCTION TEAM  
SAVCON AND GILBANE

EXCLUSIVE SALES AND MARKETING  
COMPASS DEVELOPMENT  
MARKETING GROUP

Sales Gallery at 300 Butler Street, West Palm Beach, FL 33407

1919 N Flagler Drive · West Palm Beach, FL 33407 · 561-448-3015 · [OlaraWestPalmBeach.com](http://OlaraWestPalmBeach.com)

Floorplans and dimensions are approximate, may vary, and are subject to change without notice. Floorplans are conceptual and not to scale. ORAL REPRESENTATIONS CANNOT BE RELIED UPON AS CORRECTLY STATING THE REPRESENTATIONS OF THE DEVELOPER. FOR CORRECT REPRESENTATIONS, MAKE REFERENCE TO THE DOCUMENTS REQUIRED BY SECTION 718.503, FLORIDA STATUTES, TO BE FURNISHED BY A DEVELOPER TO A BUYER OR LESSEE. THE COMPLETE OFFERING TERMS ARE IN A FLORIDA PROSPECTUS AVAILABLE FROM THE DEVELOPER. New York: The Offering Plan for Olara Condominium has been filed with the New York State Department of Law, File No. CP22-0089. The Offering Plan is available from the Sponsor, New Jersey: This advertisement is a solicitation for the sale of units in Olara Condominium: N.J. Reg. No. 22-04-0012. Massachusetts: This Condominium has been registered with the Massachusetts Board of Registration of Real Estate Brokers and Salespersons: F-1277-01-01. California: WARNING: THE CALIFORNIA DEPARTMENT OF REAL ESTATE HAS NOT INSPECTED, EXAMINED, OR QUALIFIED THIS OFFERING. Equal Housing Opportunity

# RESIDENCE 308, 404, 504

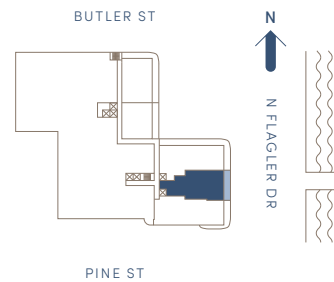
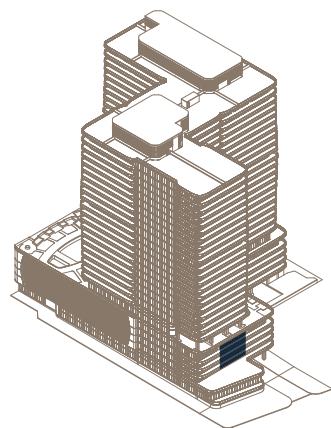
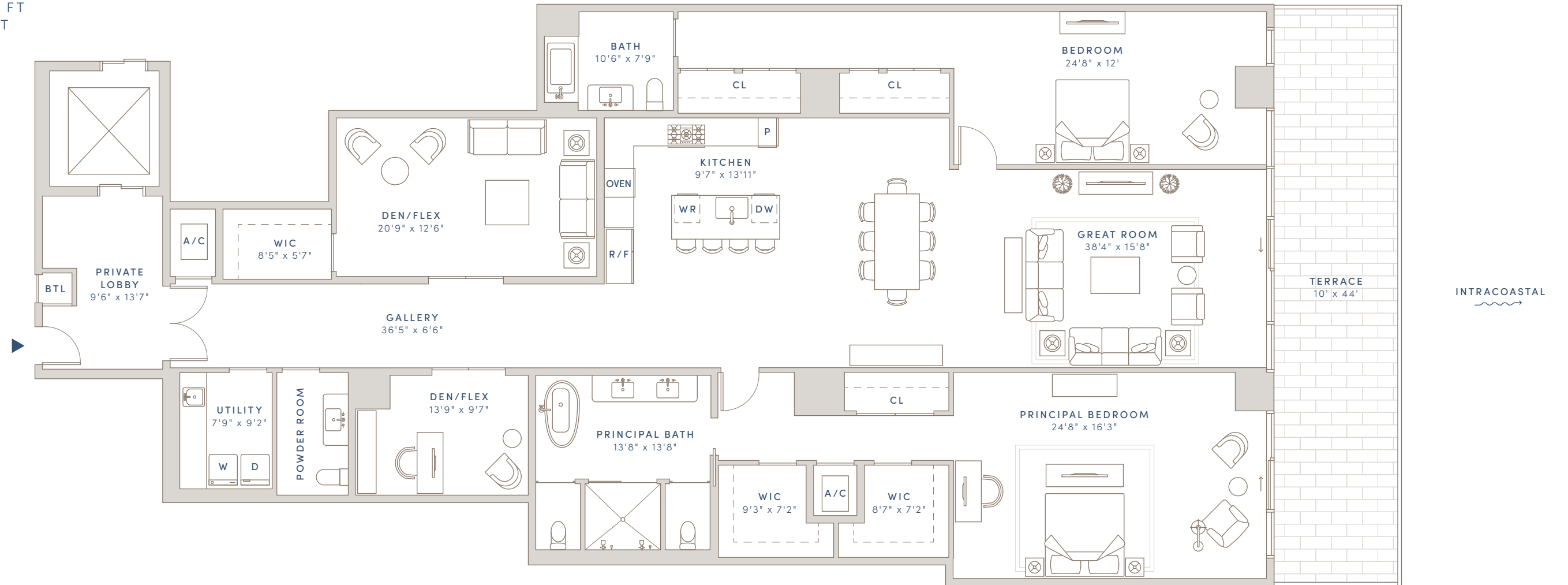
# OLARA

WHERE LIFE FLOWS

## FLOORS 3-5

2 BEDROOMS + DEN  
2 BATHS  
1 POWDER ROOM

INTERIOR: 3,552 SQ FT  
EXTERIOR: 440 SQ FT  
TOTAL: 3,992 SQ FT



DEVELOPER  
SAVANNA

ARCHITECT  
ARQUITECTONICA

INTERIOR DESIGN  
GABELLINI SHEPPARD

LANDSCAPE ARCHITECT  
EDSA

CONSTRUCTION TEAM  
SAVCON AND GILBANE

EXCLUSIVE SALES AND MARKETING  
COMPASS DEVELOPMENT  
MARKETING GROUP

Sales Gallery at 300 Butler Street, West Palm Beach, FL 33407

1919 N Flagler Drive · West Palm Beach, FL 33407 · 561-448-3015 · OlaraWestPalmBeach.com

Floorplans and dimensions are approximate, may vary, and are subject to change without notice. Floorplans are conceptual and not to scale. ORAL REPRESENTATIONS CANNOT BE RELIED UPON AS CORRECTLY STATING THE REPRESENTATIONS OF THE DEVELOPER. FOR CORRECT REPRESENTATIONS, MAKE REFERENCE TO THE DOCUMENTS REQUIRED BY SECTION 718.503, FLORIDA STATUTES, TO BE FURNISHED BY A DEVELOPER TO A BUYER OR LESSEE. THE COMPLETE OFFERING TERMS ARE IN A FLORIDA PROSPECTUS AVAILABLE FROM THE DEVELOPER. New York: The Offering Plan for Olara Condominium has been filed with the New York State Department of Law, File No. CP22-0089. The Offering Plan is available from the Sponsor, New Jersey: This advertisement is a solicitation for the sale of units in Olara Condominium: N.J. Reg. No. 22-04-0012. Massachusetts: This Condominium has been registered with the Massachusetts Board of Registration of Real Estate Brokers and Salespersons: F-1277-01-01. California: WARNING: THE CALIFORNIA DEPARTMENT OF REAL ESTATE HAS NOT INSPECTED, EXAMINED, OR QUALIFIED THIS OFFERING. Equal Housing Opportunity

# RESIDENCE 209

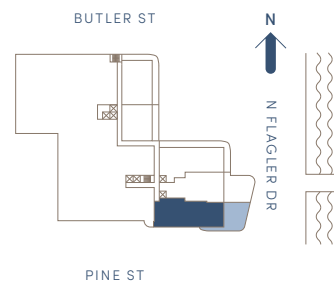
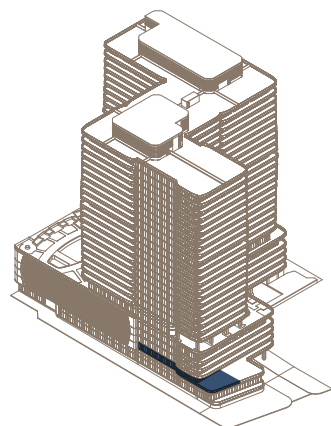
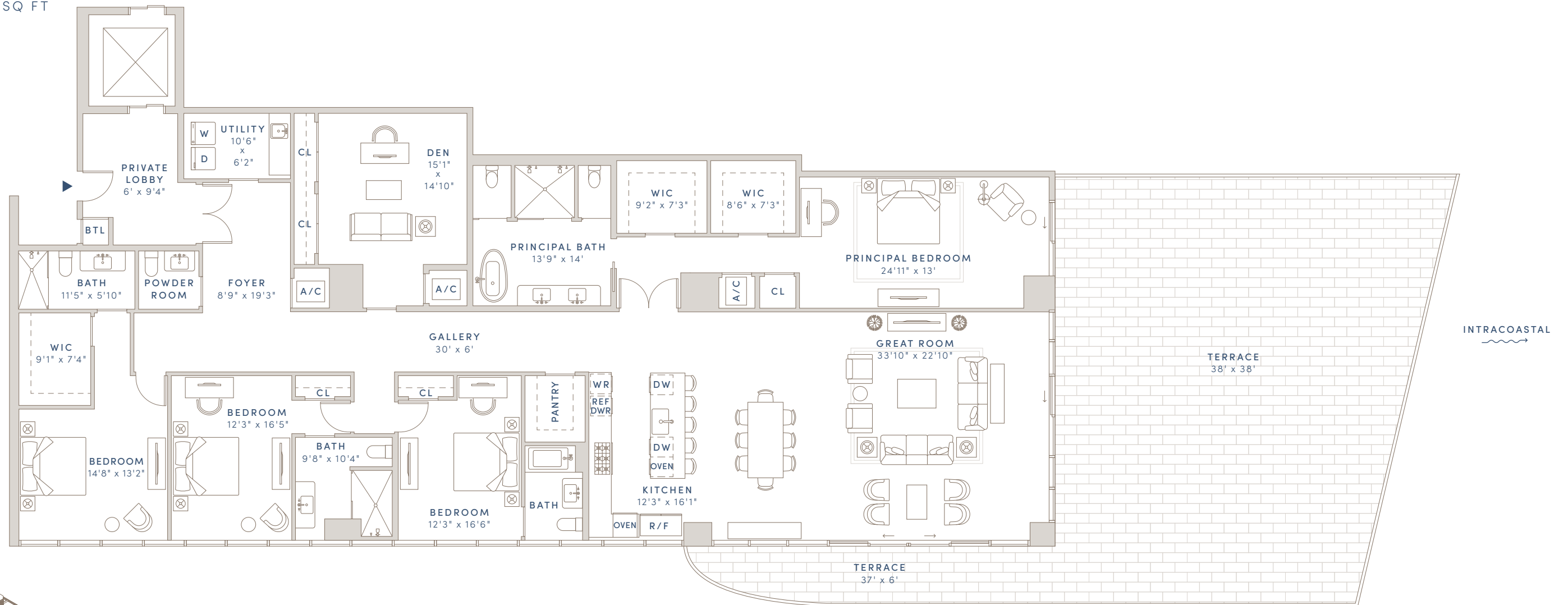
# OLARA

WHERE LIFE FLOWS

## FLOOR 2

4 BEDROOMS + DEN  
4 BATHS  
1 POWDER ROOM

INTERIOR: 4,015 SQ FT  
EXTERIOR: 1,674 SQ FT  
TOTAL: 5,689 SQ FT



DEVELOPER  
SAVANNA

ARCHITECT  
ARQUITECTONICA

INTERIOR DESIGN  
GABELLINI SHEPPARD

LANDSCAPE ARCHITECT  
EDSA

CONSTRUCTION TEAM  
SAVCON AND GILBANE

EXCLUSIVE SALES AND MARKETING  
COMPASS DEVELOPMENT  
MARKETING GROUP

Sales Gallery at 300 Butler Street, West Palm Beach, FL 33407

1919 N Flagler Drive · West Palm Beach, FL 33407 · 561-448-3015 · [OlaraWestPalmBeach.com](http://OlaraWestPalmBeach.com)

Floorplans and dimensions are approximate, may vary, and are subject to change without notice. Floorplans are conceptual and not to scale. ORAL REPRESENTATIONS CANNOT BE RELIED UPON AS CORRECTLY STATING THE REPRESENTATIONS OF THE DEVELOPER. FOR CORRECT REPRESENTATIONS, MAKE REFERENCE TO THE DOCUMENTS REQUIRED BY SECTION 718.503, FLORIDA STATUTES, TO BE FURNISHED BY A DEVELOPER TO A BUYER OR LESSEE. THE COMPLETE OFFERING TERMS ARE IN A FLORIDA PROSPECTUS AVAILABLE FROM THE DEVELOPER. New York: The Offering Plan for Olara Condominium has been filed with the New York State Department of Law, File No. CP22-0089. The Offering Plan is available from the Sponsor, New Jersey: This advertisement is a solicitation for the sale of units in Olara Condominium: N.J. Reg. No. 22-04-0012. Massachusetts: This Condominium has been registered with the Massachusetts Board of Registration of Real Estate Brokers and Salespersons: F-1277-01-01. California: WARNING: THE CALIFORNIA DEPARTMENT OF REAL ESTATE HAS NOT INSPECTED, EXAMINED, OR QUALIFIED THIS OFFERING. Equal Housing Opportunity

# RESIDENCE 309, 405, 505

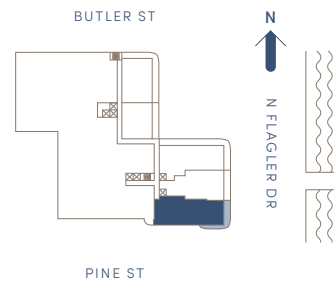
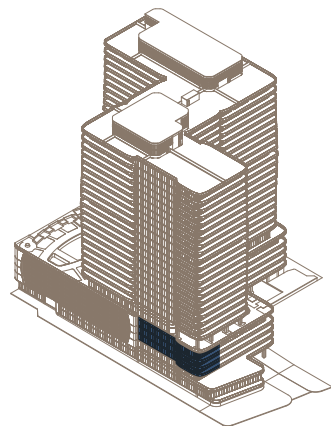
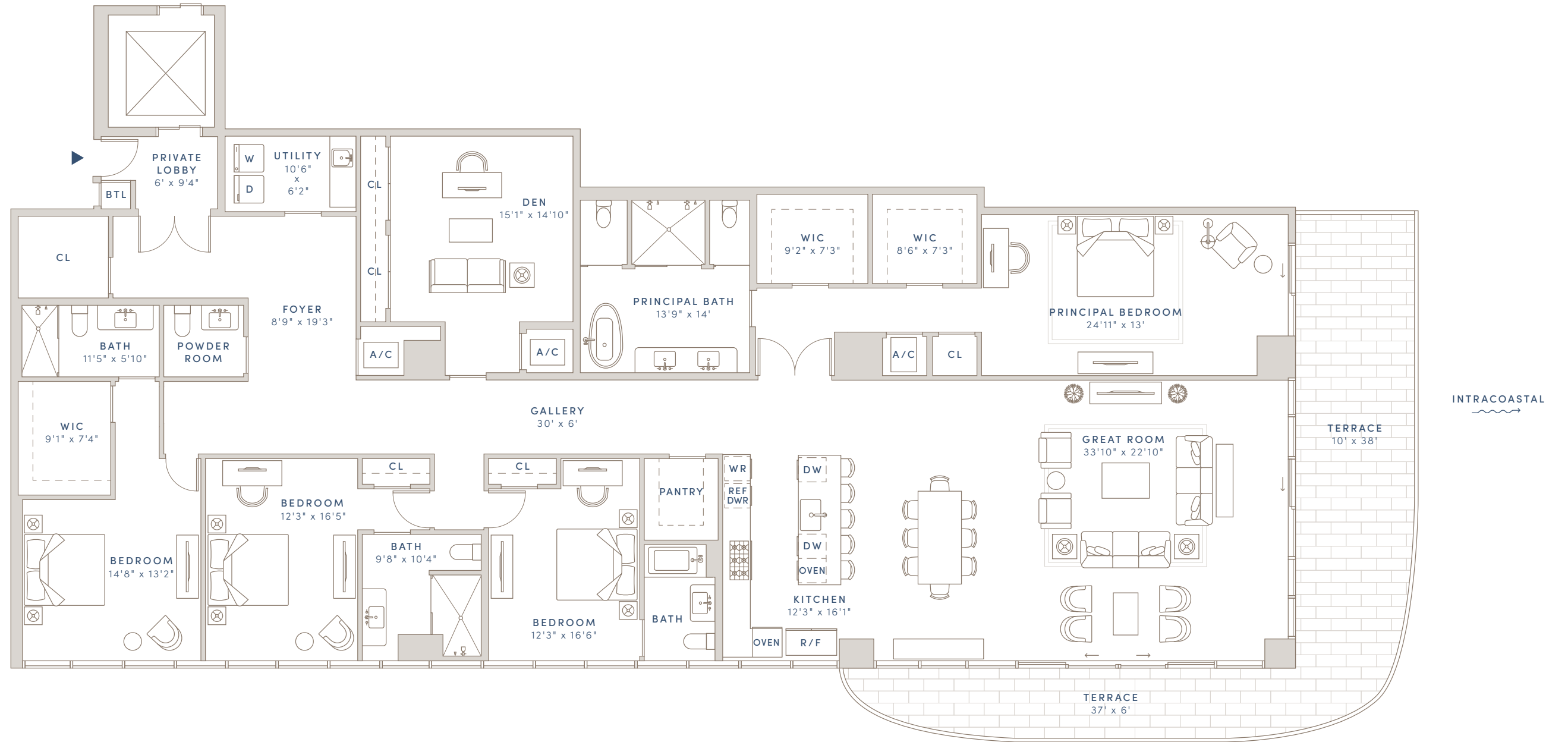
# OLARA

WHERE LIFE FLOWS

## FLOORS 3-5

4 BEDROOMS + DEN  
4 BATHS  
1 POWDER ROOM

INTERIOR: 4,228 SQ FT  
EXTERIOR: 602 SQ FT  
TOTAL: 4,830 SQ FT



DEVELOPER  
SAVANNA

ARCHITECT  
ARQUITECTONICA

INTERIOR DESIGN  
GABELLINI SHEPPARD

LANDSCAPE ARCHITECT  
EDSA

CONSTRUCTION TEAM  
SAVCON AND GILBANE

EXCLUSIVE SALES AND MARKETING  
COMPASS DEVELOPMENT  
MARKETING GROUP

Sales Gallery at 300 Butler Street, West Palm Beach, FL 33407

1919 N Flagler Drive · West Palm Beach, FL 33407 · 561-448-3015 · OlaraWestPalmBeach.com

Floorplans and dimensions are approximate, may vary, and are subject to change without notice. Floorplans are conceptual and not to scale. ORAL REPRESENTATIONS CANNOT BE RELIED UPON AS CORRECTLY STATING THE REPRESENTATIONS OF THE DEVELOPER. FOR CORRECT REPRESENTATIONS, MAKE REFERENCE TO THE DOCUMENTS REQUIRED BY SECTION 718.503, FLORIDA STATUTES, TO BE FURNISHED BY A DEVELOPER TO A BUYER OR LESSEE. THE COMPLETE OFFERING TERMS ARE IN A FLORIDA PROSPECTUS AVAILABLE FROM THE DEVELOPER. New York: The Offering Plan for Olara Condominium has been filed with the New York State Department of Law, File No. CP22-0089. The Offering Plan is available from the Sponsor, New Jersey. This advertisement is a solicitation for the sale of units in Olara Condominium: N.J. Reg. No. 22-04-0012. Massachusetts: This Condominium has been registered with the Massachusetts Board of Registration of Real Estate Brokers and Salespersons: F-1277-01-01. California: WARNING: THE CALIFORNIA DEPARTMENT OF REAL ESTATE HAS NOT INSPECTED, EXAMINED, OR QUALIFIED THIS OFFERING. Equal Housing Opportunity