



ASTON MARTIN

RESIDENCES

— at —

300 BISCAYNE BOULEVARD WAY
MIAMI

Developed by G&G Business Developments LLC



ASTON MARTIN

RESIDENCES

at

300 BISCAYNE BOULEVARD WAY
MIAMI

Developed by G&G Business Developments LLC

ORAL REPRESENTATIONS CANNOT BE RELIED UPON AS CORRECTLY STATING THE REPRESENTATIONS OF THE DEVELOPER. FOR CORRECT REPRESENTATIONS, MAKE REFERENCE TO THIS BROCHURE AND TO THE DOCUMENTS REQUIRED BY SECTION 718.503, FLORIDA STATUTES, TO BE FURNISHED BY A DEVELOPER TO A BUYER OR LESSEE.



LOVE OF BEAUTY IS TASTE,
CREATION OF BEAUTY IS ART

True beauty has the power to inspire and elevate. Every day, it enriches our lives in infinite ways both obvious and subtle. A moving sonnet, a powerful film, an infectious rhythm, a rare vintage, an impressionist landscape – when we encounter singular works of beauty, our senses are heightened, and somehow the way in which we perceive our world is changed forever. Beauty is timeless, as are the artisans who pour heart and soul into its creation. Their talent, genius and muse create gifts that are beyond measure.



BIRTH OF A LEGEND

A fiercely independent spirit and a rich and prestigious history define Aston Martin as truly unique in the automotive world. The incredible story begins on 15th January, 1913 when founders Robert Bamford and Lionel Martin created Bamford and Martin Limited, working from a humble workshop on Henniker Mews in London. Their vision for cars with an impeccable design and supreme performance captivated the public's imagination and still commands the same emotive fascination over 100 years later. In 1914 the name Aston Martin was adopted. Fittingly, this decision was inspired by Lionel's success at the Aston Hill Climb in Buckinghamshire, England. Competition has always been in their blood. Since those pioneering days, Aston Martin has become an iconic brand synonymous with handcrafted luxury, peerless beauty, incredible performance and international motorsport glory.



THE ESSENCE OF ASTON MARTIN

The very essence of Aston Martin is something you feel each time you look at one of our cars. It sweeps over you every moment you spend behind the wheel. Powerful, exhilarating and precise yet timelessly elegant and sophisticated; our cars blend iconic design, exceptional engineering and unrivalled craftsmanship to create an unforgettable, emotional experience.



PASSION FOR PERFECTION

The people who bring our cars to life are inspired by a shared pride in representing Aston Martin and energised by a common determination to create the most beautiful cars in the world. A unique collective skill set, time-honoured artisan techniques and advanced technology are intricately woven together as each car is created. Our team's dedication to push beyond accepted standards of perfection to achieve an unheralded level of dynamic and aesthetic precision is truly unique.



A RICH HISTORY, AN EXCITING FUTURE

Unrivalled prestige, unequalled craftsmanship, uncompromising standards. For over a century, the Aston Martin name has been synonymous with excellence in the field of motorcar design and is one of the world's most iconic, recognisable marques. Each one produced is bespoke and handcrafted, making a highly personal statement about the owner who possesses it.

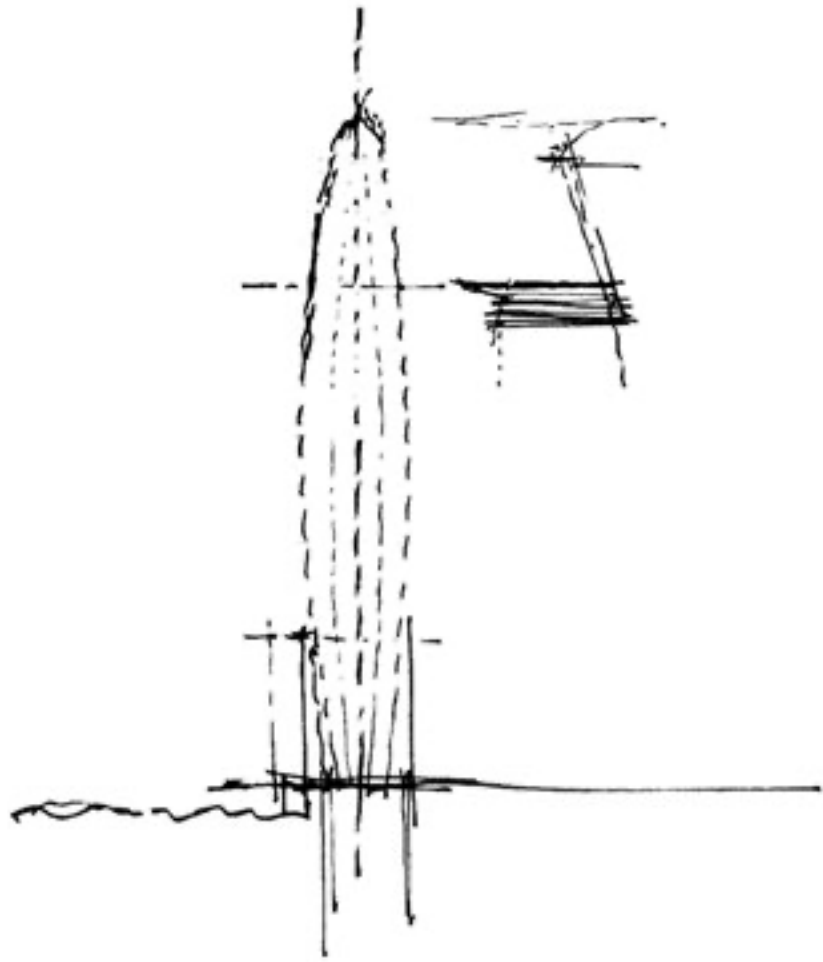
For their vision of 300 Biscayne Boulevard Way in downtown Miami, Aston Martin partnered with renowned developer G&G Business Developments LLC to translate its legendary design into an exclusive real estate venture. The result is a prestigious, one-of-a-kind edifice that represents the pinnacle of elegant living.

A black and white photograph showing a close-up of a hand holding a pencil, drawing a sketch of a leaf on a piece of paper. The hand is positioned on the left side of the frame, with the pencil tip touching the paper. The sketch is a simple line drawing of a leaf, with the pencil currently adding detail to its veins. The background is blurred, showing more of the paper and the hand's movement.

THE ART OF CRAFTSMANSHIP

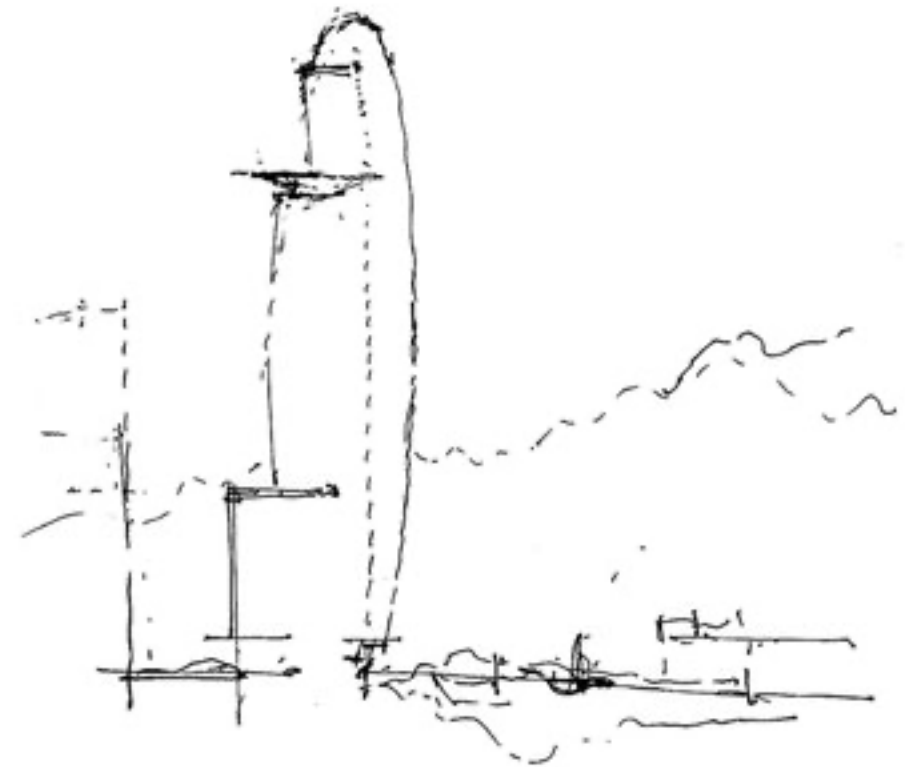
"In this, our first residential development, the interiors are inspired by Aston Martin, but take into consideration Miami's tropical environment. Our design language is based on beauty and the honesty and authenticity of materials. It's simple and pure and it has an elegance attached to beautiful proportions. We are incorporating Aston Martin's DNA through subtle details and fine craftsmanship, with an emphasis on comfort. This building is for people who appreciate the finest quality and craftsmanship, who love the feeling of something that is timeless."

MAREK REICHMAN
EVP and Chief Creative Officer
Aston Martin



TIMELESS LINES, EXTRAORDINARY VISION

Beautiful design starts with the simplest stroke of a pencil, before growing and evolving as that first spark of creativity is brought to life.



“Looking at the city of Miami and its powerful connection with the sea, the idea of smooth waves came instantly to our minds. The ripple of the water and the soft lines of its coastline made us wonder how to create a connection between architecture and Miami’s distinct shapes.

The work of carving a new niche in this city led to the creation of a luxurious Residential Tower that speaks in the language of the ocean - inspired by the rush of the breeze and the sail of a boat. Aston Martin Residences at 300 Biscayne Boulevard Way achieves an exquisite encounter between sea, city and wind.”

RODOLFO MIANI
BMA Architects

A WORLD OF ARTISTRY, LUXURY AND CHOICE



ARTISTIC CONCEPTUAL RENDERING

PERFECTLY
REFLECTING
A NAME OF
LEGEND



ARTISTIC CONCEPTUAL RENDERING

A WORLD-CLASS
BUILDING
SUGGESTING
ELEGANCE AND
EXCLUSIVITY



ARTISTIC CONCEPTUAL RENDERING

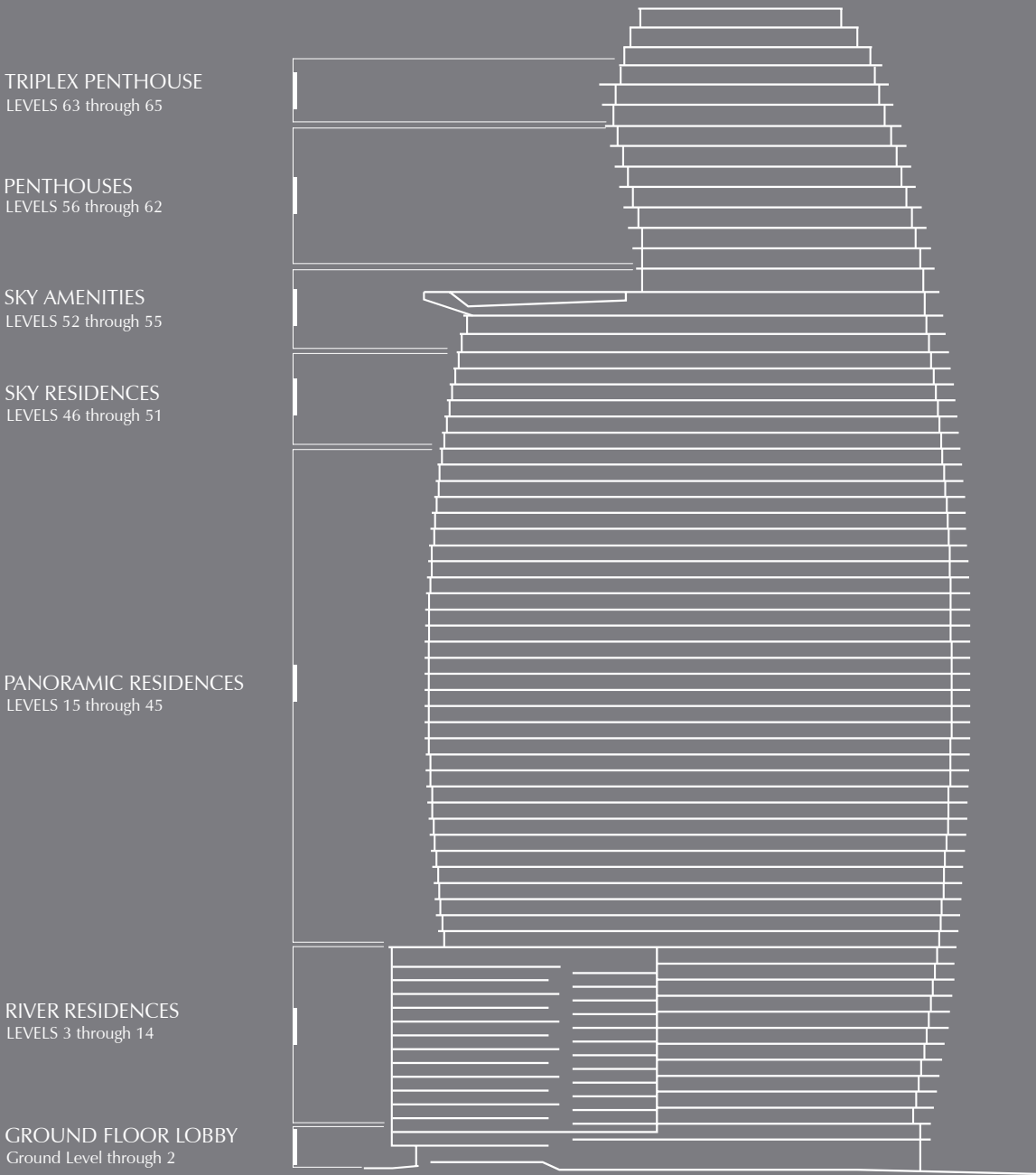


MASTERFULLY DESIGNED FOR LIVING A WORLD-CLASS LIFESTYLE

The Aston Martin Residences at 300 Biscayne Boulevard Way melds a brilliant design aesthetic with an ideal location to create Miami's most striking, coveted address. Situated on one of the last parcels of Miami waterfront property to be developed, the Aston Martin Residences at 300 Biscayne Boulevard Way is a symphony of curvilinear glass and steel, soaring 66 storeys into the sky. Of its 391 generously sized, light-filled homes, half of which have completely unique floor plans. A select few will comprise the most breath-taking penthouses - including the jewel in the crown, one superb triplex condominium. Panoramic views of Biscayne Bay, the Miami River and the dynamic Miami skyline abound, providing an ever-changing, dramatic backdrop. A full complement of amenities such as a state-of-the-art fitness centre and spa, large pool deck, salons, lounges and a super yacht marina are all located onsite for total convenience. With an architectural design that pays homage to the instantly identifiable, sleek lines of its motorcars, Aston Martin envisioned a structure that perfectly captures the spirit of excitement and graceful beauty for which it is world-famous.

THE BUILDING

Every aspect of the Aston Martin Residences at 300 Biscayne Boulevard Way has been carefully considered to provide the perfect balance between maximisation of space, optimal light and views, and the needs of today’s modern cosmopolitan lifestyles. Additionally, all amenities within and adjacent to the building have been positioned for maximum convenience and accessibility.



FEATURES & AMENITIES

BUILDING INFORMATION

- 391 Condominium Residences
- 66 Floors
- 1-5 Bedroom Residences, Duplexes, Penthouses, and Triple Penthouse
 - Levels 3 through 14 - River Residences
 - Levels 15 through 45 - Panoramic Residences
 - Levels 46 through 51 - Sky Residences
 - Levels 56 through 62 - Penthouses
 - Levels 63 through 65 - Triple Penthouse

BUILDING AMENITIES & SERVICES

- Full Service building with concierge and hospitality-inspired services
- Super Yacht Marina facilities
- 24-Hour valet and self parking option
- Charging stations for electric cars
- Bicycle and private storage spaces
- 10 destination controlled super hi-speed elevators and 3 separate dedicated service elevators
- Digital connection to concierge and all building amenities from every residence
- Pet Friendly

RESIDENCES FEATURES

- Expansive floor plan layouts
 - Upper Penthouse 18,811 SF
 - Sky Penthouses ranging from 8,977 SF to 10,463 SF
 - 5 bedrooms ranging from 3,764 SF to 3,994 SF

- 4 bedrooms ranging from 3,235 SF to 4,434 SF
- 3 bedrooms ranging from 2,236 SF to 3,075 SF
- 2 bedrooms ranging from 1,317 SF to 2,143 SF
- 1 bedrooms ranging from 754 SF to 1,001 SF
- Studios from 698 SF

- Panoramic views of Biscayne Bay, the Ocean, and the iconic Miami Skyline
- 10 FT. ceiling height in residences
- 12 FT. ceiling height in penthouses
- Floor to ceiling windows and sliding glass doors throughout residences
- Top-of-the-line kitchens with European cabinetry and appliances
- Bathrooms with European cabinetry
- Premium marble flooring throughout living area, kitchen, and bathrooms
- Private balconies finished with high-end porcelain flooring and glass railings

DEVELOPMENT
G&G Business Developments LLC

ARCHITECT
BMA – Bodas Miani Anger Architects
Revuelta Architecture International

PUBLIC SPACES / COMMON AREAS
BMA – Bodas Miani Anger Architects
Aston Martin Design

SALES & MARKETING
Cervera Real Estate



SKY AMENITIES

42,275 SF of amenities divided into 4 floors,
connected by a monumental glass staircase

LEVEL
55

- Infinity Pool
- Pool Deck
- Pool Cabanas
- Sky Bar and Lounge
- Pool Concierge
- Grand Salon
- State-of-the-art Chef's Kitchen
- Private Dining Room
- Catering Kitchen

LEVEL
54

- Fitness Centre (Upper Level)
- Virtual Golf
- Movie Theatres 1 & 2

LEVEL
53

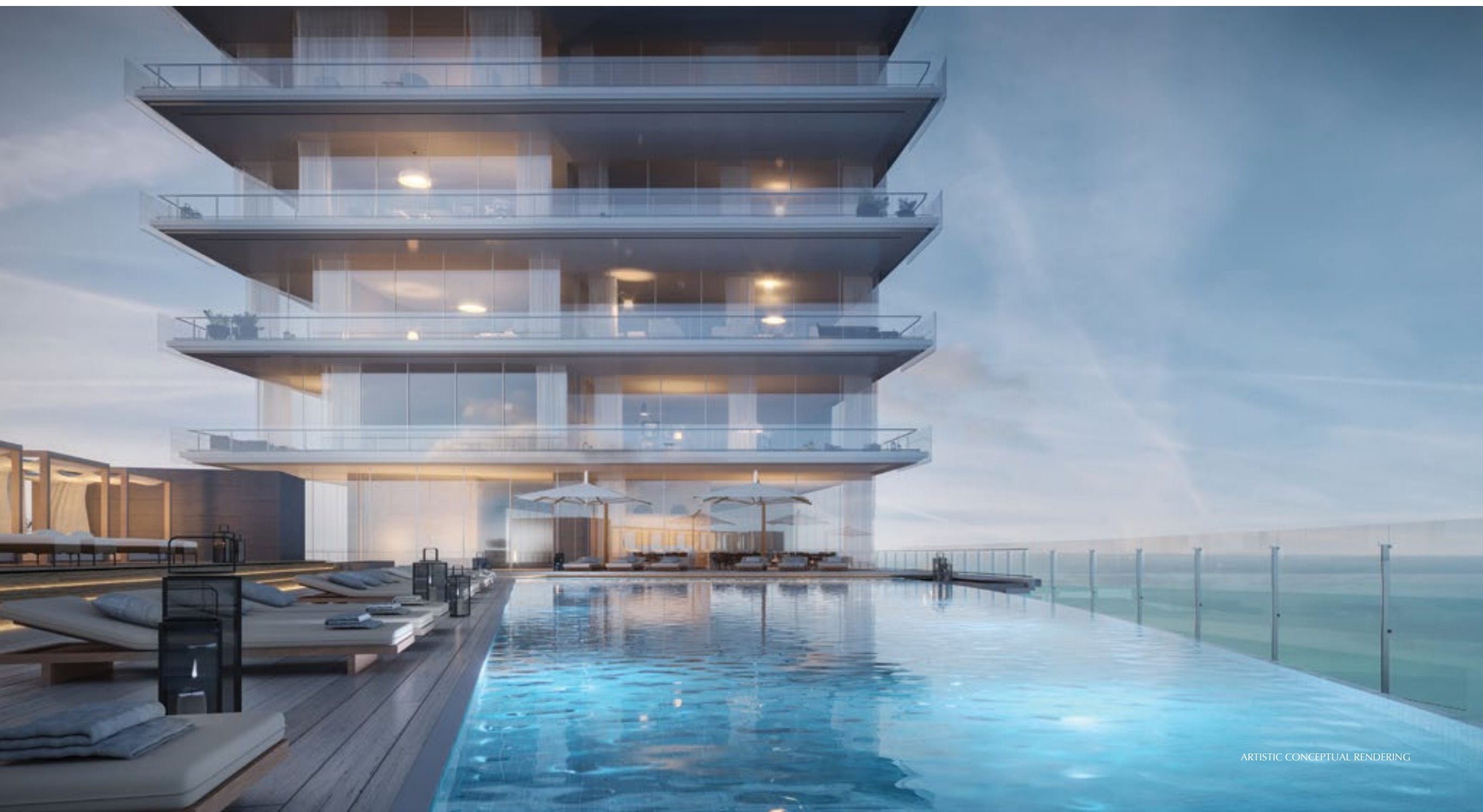
- Fitness/Spa Lounge
- Spa Lobby/Shop
- Fitness Centre (Lower Level)
- Spinning Room
- Boxing Room

- SPA
- Treatment Suites
- Steam Room
- Sauna
- Meditation Room
- Beauty Salon
- Barber Station

LEVEL
52

- Curated Art Gallery
- Business Centre
- Conference Room
- Kids Playroom
- Teen Centre
- Game Room
- Vending Area

SKY AMENITIES



BREATHTAKING POOL DECK



ARTISTIC CONCEPTUAL RENDERING

THE MARINA



ARTISTIC CONCEPTUAL RENDERING

While the Condominium is adjacent to the Miami River, the Marina is not included as part of the Condominium. The adjacent dockage and marina are intended to be owned and/or operated by a private party and any rights of use of the marina (if any) shall be in the sole discretion of such private party.

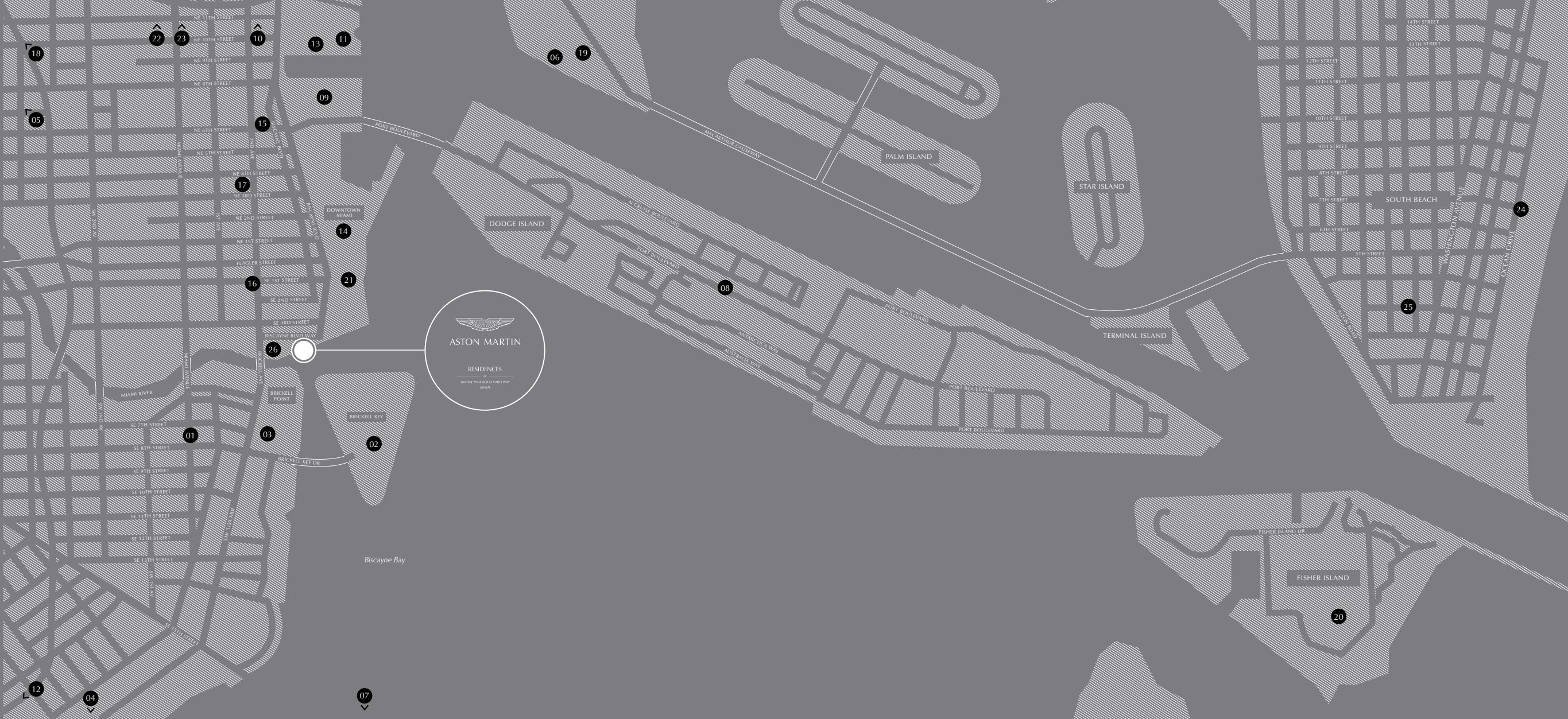


ASTON MARTIN SIGNATURE

MIAMI RIVERWALK LIMITED EDITION

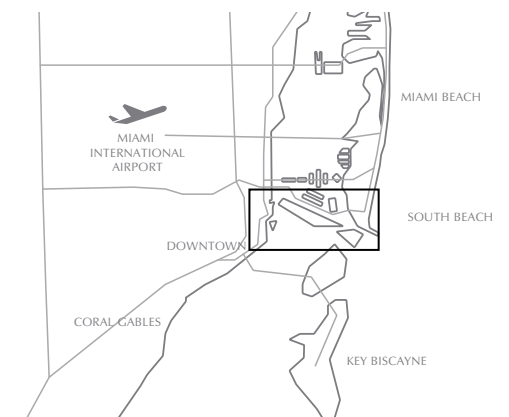
One remarkable element will ensure that Aston Martin Residences at 300 Biscayne Boulevard Way are the ultimate expression of a bespoke, cosmopolitan lifestyle.

A special Miami Riverwalk Limited Edition DB11 will be commissioned as the perfect complement for a very select few residents. Custom elements such as crafted interiors, luxe materials and finishes, as well as other unique features, will be purpose-designed into one remarkable motorcar. Limited to just 47 vehicles, those privileged to own one will possess a rare, iconic piece of history.



- 01 Brickell City Centre
- 02 Brickell Key
- 03 Brickell Financial District
- 04 Key Biscayne
- 05 Miami Central Station
- 06 Island Gardens Mega Yacht Marina
- 07 Helicopter/Seaplane Airport
- 08 Port of Miami
- 09 American Airlines Arena
- 10 Adrienne Arsht Center for the Performing Arts
- 11 Perez Art Museum Miami (PAMM)
- 12 Patricia and Philip Frost Museum of Science
- 13 Museum Park

- 14 Bayfront Park
- 15 Freedom Tower
- 16 Olympia Theater
- 17 Miami Dade College
- 18 Miami International Airport
- 19 Children's Museum
- 20 Fisher Island
- 21 Downtown Miami
- 22 Midtown
- 23 Design District
- 24 South Beach
- 25 Miami Beach
- 26 Zuma Restaurant



KEYPLAN

GROUND FLOOR LOBBY

GROUND LEVEL THROUGH 2

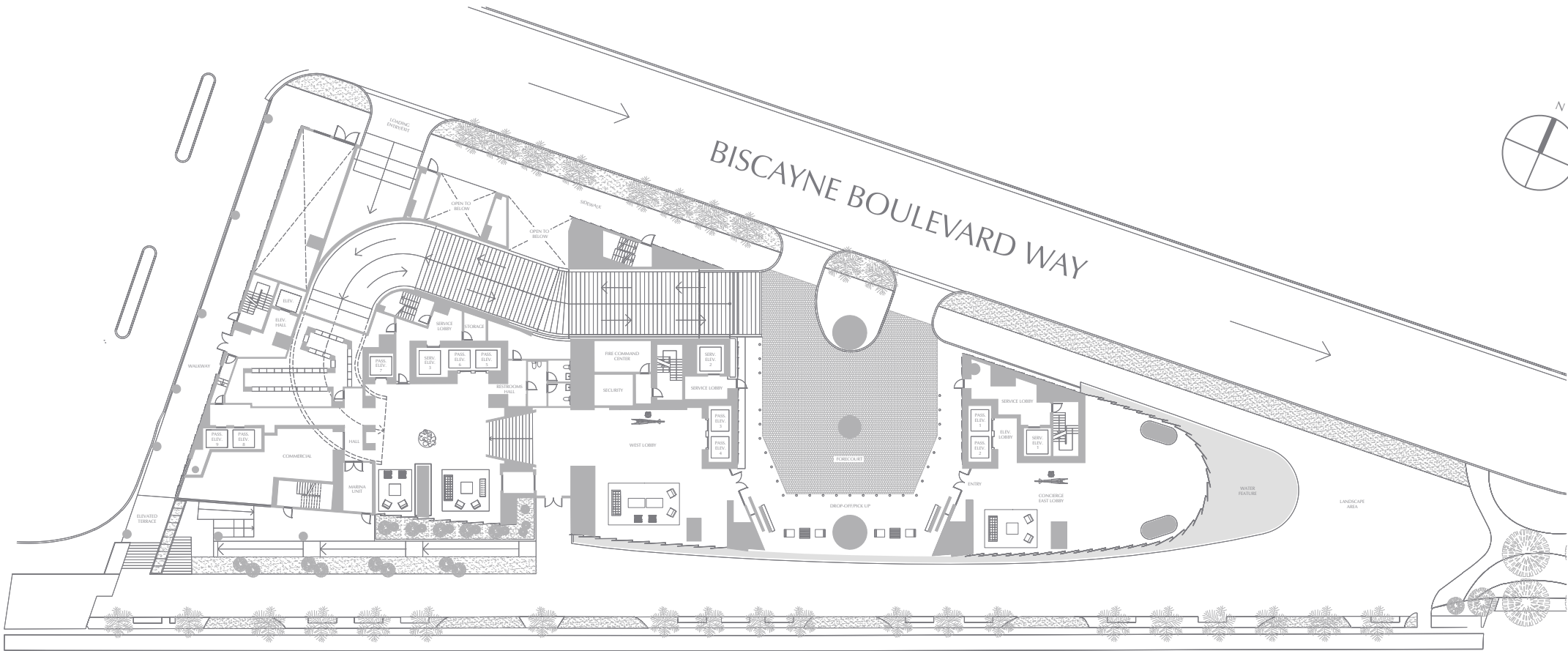


ASTON MARTIN

RESIDENCES

at

300 BISCAYNE BOULEVARD WAY
MIAMI



MIAMI RIVER



GROUND LEVEL
THROUGH
LEVEL 2



ALL PLANS, FEATURES AND AMENITIES DEPICTED HEREIN ARE BASED UPON PRELIMINARY DEVELOPMENT PLANS, AND ARE SUBJECT TO CHANGE WITHOUT NOTICE IN THE MANNER PROVIDED IN THE OFFERING DOCUMENTS. NO GUARANTEES OR REPRESENTATIONS WHATSOEVER ARE MADE THAT ANY PLANS, FEATURES, AMENITIES OR FACILITIES WILL BE PROVIDED OR, IF PROVIDED, WILL BE OF THE SAME TYPE, SIZE, LOCATION OR NATURE AS DEPICTED OR DESCRIBED HEREIN. THE SKETCHES, RENDERINGS, GRAPHIC MATERIALS, PLANS, SPECIFICATIONS, TERMS, CONDITIONS AND STATEMENTS CONTAINED IN THIS BROCHURE ARE PROPOSED ONLY, AND THE DEVELOPER RESERVES THE RIGHT TO MODIFY, REVISE OR WITHDRAW ANY OR ALL OF THE SAME IN ITS SOLE DISCRETION AND WITHOUT PRIOR NOTICE. ALL IMPROVEMENTS, DESIGNS AND CONSTRUCTION ARE SUBJECT TO FIRST OBTAINING THE APPROPRIATE FEDERAL, STATE AND LOCAL PERMITS AND APPROVALS FOR SAME. THESE DRAWINGS AND DEPICTIONS ARE CONCEPTUAL ONLY AND ARE FOR THE CONVENIENCE OF REFERENCE. THEY SHOULD NOT BE RELIED UPON AS REPRESENTATIONS, EXPRESS OR IMPLIED, OF THE FINAL DETAIL OF THE RESIDENCES. THE DEVELOPER EXPRESSLY RESERVES THE RIGHT TO MAKE MODIFICATIONS, REVISIONS AND CHANGES IT DEEMES DESIRABLE IN ITS SOLE AND ABSOLUTE DISCRETION.

KEYPLAN

RIVER RESIDENCES

LEVEL 3 THROUGH 14

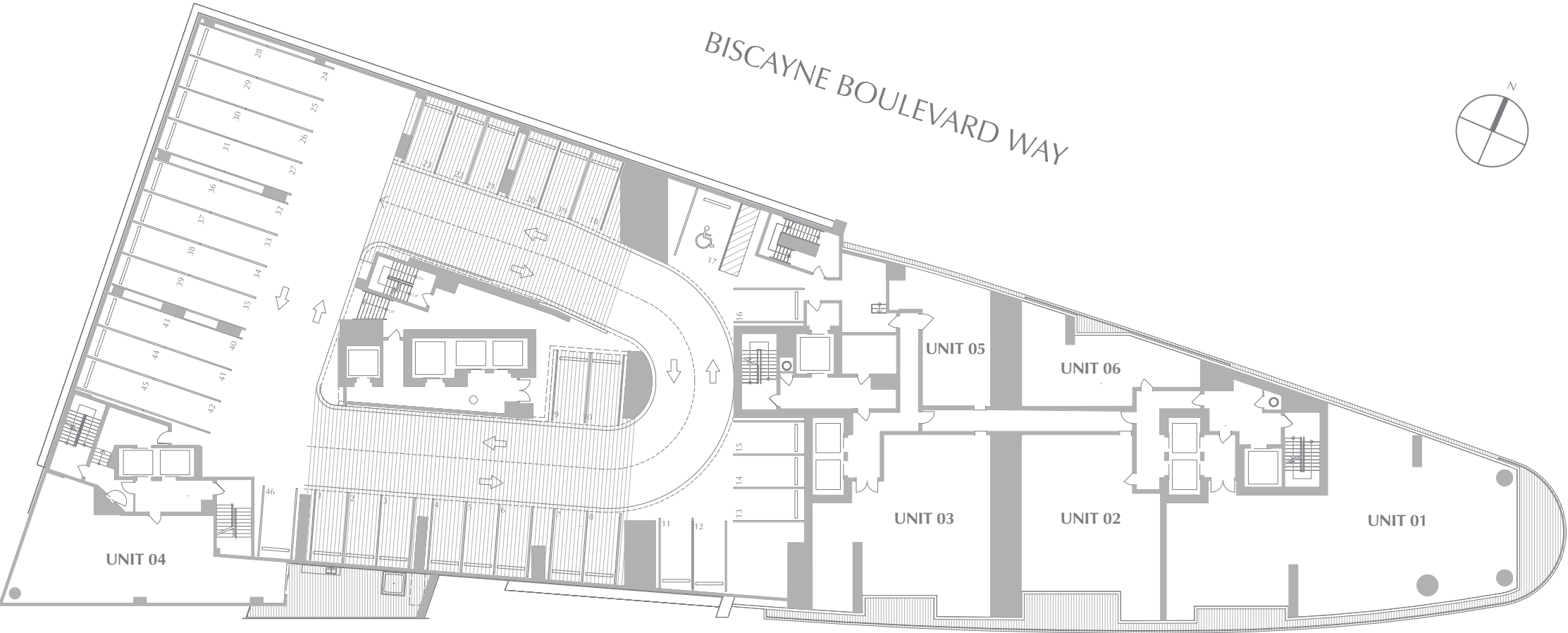


ASTON MARTIN

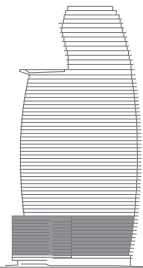
RESIDENCES

at

300 BISCAYNE BOULEVARD WAY
MIAMI



MIAMI RIVER



LEVEL 3
THROUGH
LEVEL 14



ALL PLANS, FEATURES AND AMENITIES DEPICTED HEREIN ARE BASED UPON PRELIMINARY DEVELOPMENT PLANS, AND ARE SUBJECT TO CHANGE WITHOUT NOTICE IN THE MANNER PROVIDED IN THE OFFERING DOCUMENTS. NO GUARANTEES OR REPRESENTATIONS WHATSOEVER ARE MADE THAT ANY PLANS, FEATURES, AMENITIES OR FACILITIES WILL BE PROVIDED OR, IF PROVIDED, WILL BE OF THE SAME TYPE, SIZE, LOCATION OR NATURE AS DEPICTED OR DESCRIBED HEREIN. THE SKETCHES, RENDERINGS, GRAPHIC MATERIALS, PLANS, SPECIFICATIONS, TERMS, CONDITIONS AND STATEMENTS CONTAINED IN THIS BROCHURE ARE PROPOSED ONLY, AND THE DEVELOPER RESERVES THE RIGHT TO MODIFY, REVISE OR WITHDRAW ANY OR ALL OF THE SAME IN ITS SOLE DISCRETION AND WITHOUT PRIOR NOTICE. ALL IMPROVEMENTS, DESIGNS AND CONSTRUCTION ARE SUBJECT TO FIRST OBTAINING THE APPROPRIATE FEDERAL, STATE AND LOCAL PERMITS AND APPROVALS FOR SAME. THESE DRAWINGS AND DEPICTIONS ARE CONCEPTUAL ONLY AND ARE FOR THE CONVENIENCE OF REFERENCE. THEY SHOULD NOT BE RELIED UPON AS REPRESENTATIONS, EXPRESS OR IMPLIED, OF THE FINAL DETAIL OF THE RESIDENCES. THE DEVELOPER EXPRESSLY RESERVES THE RIGHT TO MAKE MODIFICATIONS, REVISIONS AND CHANGES IT DEEMES DESIRABLE IN ITS SOLE AND ABSOLUTE DISCRETION.

KEYPLAN

PANORAMIC RESIDENCES

LEVEL 15 THROUGH 45

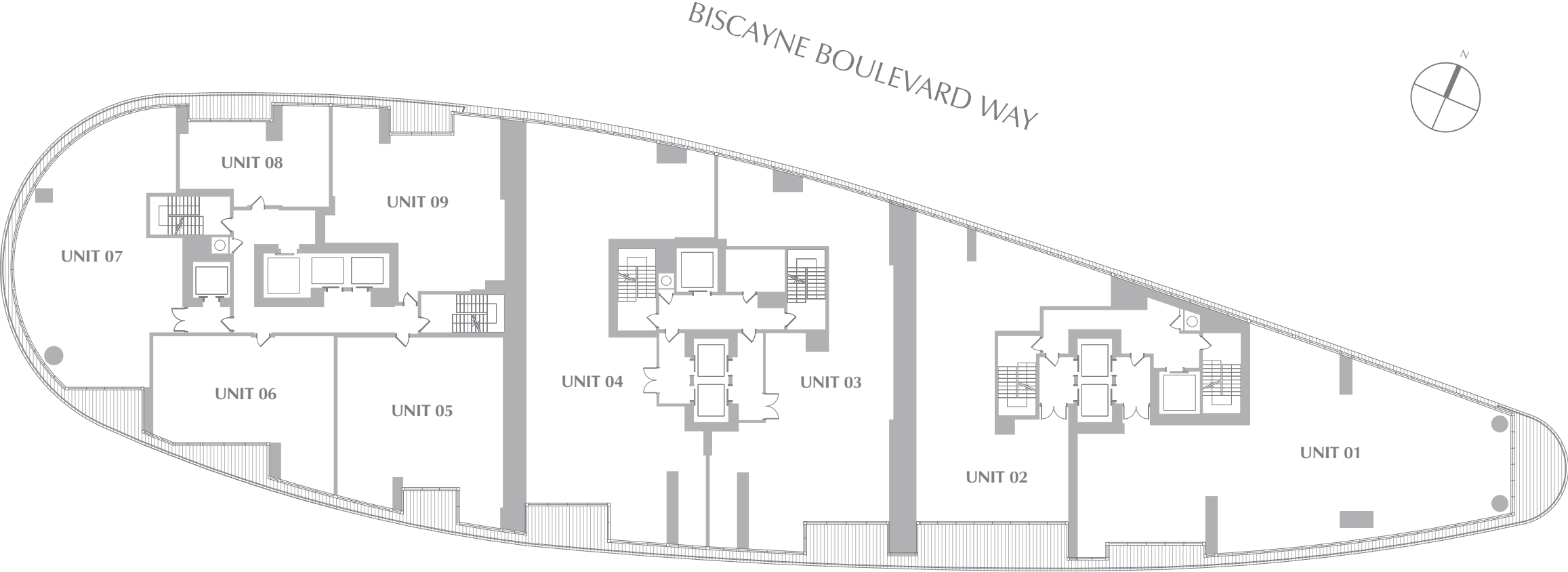


ASTON MARTIN

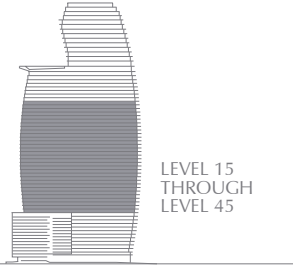
RESIDENCES

at

300 BISCAYNE BOULEVARD WAY
MIAMI



MIAMI RIVER



ALL PLANS, FEATURES AND AMENITIES DEPICTED HEREIN ARE BASED UPON PRELIMINARY DEVELOPMENT PLANS, AND ARE SUBJECT TO CHANGE WITHOUT NOTICE IN THE MANNER PROVIDED IN THE OFFERING DOCUMENTS. NO GUARANTEES OR REPRESENTATIONS WHATSOEVER ARE MADE THAT ANY PLANS, FEATURES, AMENITIES OR FACILITIES WILL BE PROVIDED OR, IF PROVIDED, WILL BE OF THE SAME TYPE, SIZE, LOCATION OR NATURE AS DEPICTED OR DESCRIBED HEREIN. THE SKETCHES, RENDERINGS, GRAPHIC MATERIALS, PLANS, SPECIFICATIONS, TERMS, CONDITIONS AND STATEMENTS CONTAINED IN THIS BROCHURE ARE PROPOSED ONLY, AND THE DEVELOPER RESERVES THE RIGHT TO MODIFY, REVISE OR WITHDRAW ANY OR ALL OF THE SAME IN ITS SOLE DISCRETION AND WITHOUT PRIOR NOTICE. ALL IMPROVEMENTS, DESIGNS AND CONSTRUCTION ARE SUBJECT TO FIRST OBTAINING THE APPROPRIATE FEDERAL, STATE AND LOCAL PERMITS AND APPROVALS FOR SAME. THESE DRAWINGS AND DEPICTIONS ARE CONCEPTUAL ONLY AND ARE FOR THE CONVENIENCE OF REFERENCE. THEY SHOULD NOT BE RELIED UPON AS REPRESENTATIONS, EXPRESS OR IMPLIED, OF THE FINAL DETAIL OF THE RESIDENCES. THE DEVELOPER EXPRESSLY RESERVES THE RIGHT TO MAKE MODIFICATIONS, REVISIONS AND CHANGES IT DEEMES DESIRABLE IN ITS SOLE AND ABSOLUTE DISCRETION.

KEYPLAN

SKY RESIDENCES

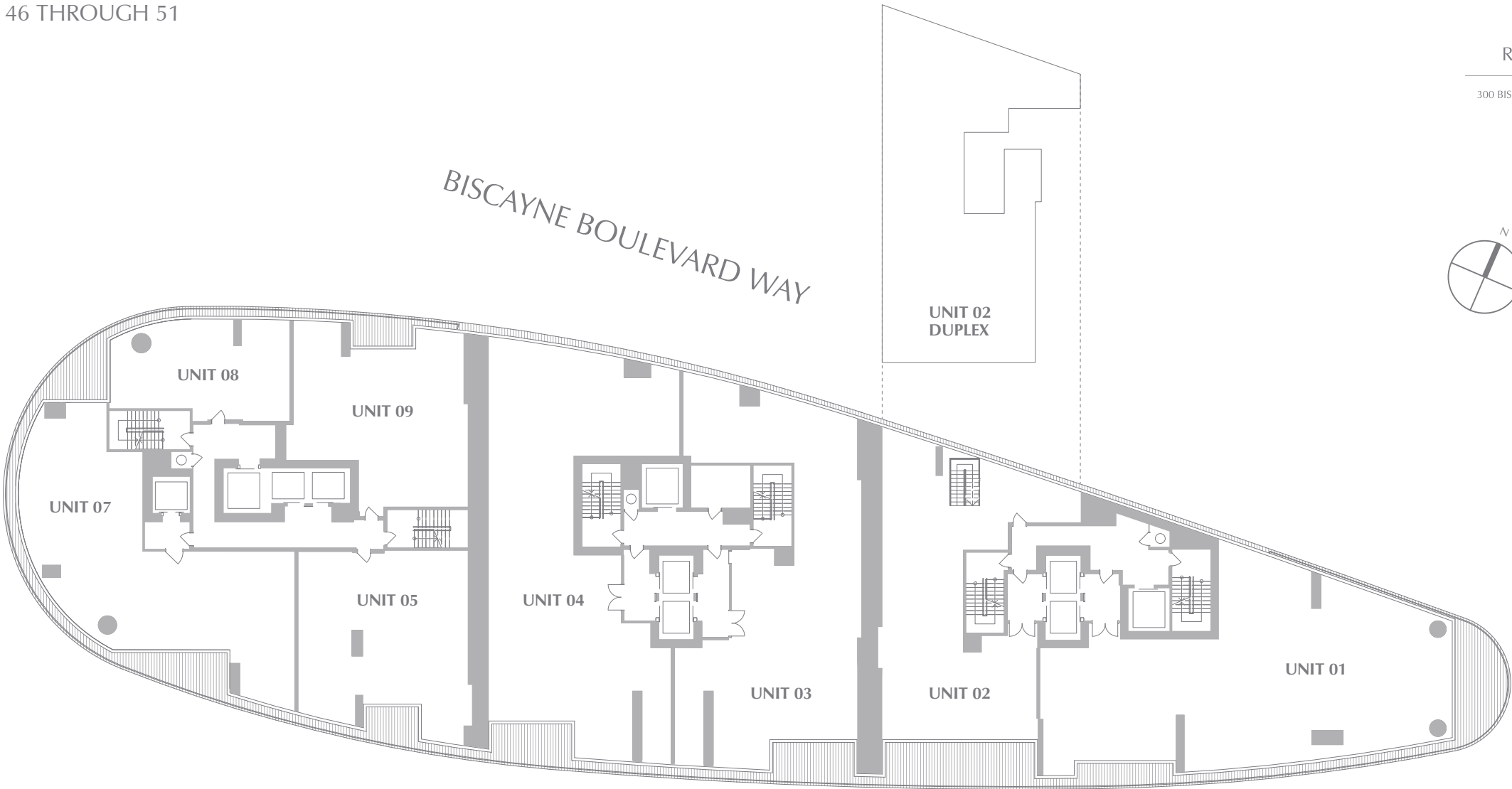
LEVEL 46 THROUGH 51



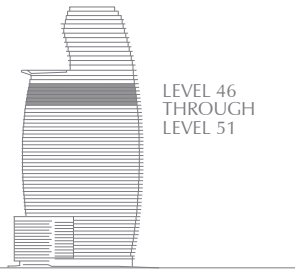
ASTON MARTIN

RESIDENCES

at
300 BISCAYNE BOULEVARD WAY
MIAMI



MIAMI RIVER



ALL PLANS, FEATURES AND AMENITIES DEPICTED HEREIN ARE BASED UPON PRELIMINARY DEVELOPMENT PLANS, AND ARE SUBJECT TO CHANGE WITHOUT NOTICE IN THE MANNER PROVIDED IN THE OFFERING DOCUMENTS. NO GUARANTEES OR REPRESENTATIONS WHATSOEVER ARE MADE THAT ANY PLANS, FEATURES, AMENITIES OR FACILITIES WILL BE PROVIDED OR, IF PROVIDED, WILL BE OF THE SAME TYPE, SIZE, LOCATION OR NATURE AS DEPICTED OR DESCRIBED HEREIN. THE SKETCHES, RENDERINGS, GRAPHIC MATERIALS, PLANS, SPECIFICATIONS, TERMS, CONDITIONS AND STATEMENTS CONTAINED IN THIS BROCHURE ARE PROPOSED ONLY, AND THE DEVELOPER RESERVES THE RIGHT TO MODIFY, REVISE OR WITHDRAW ANY OR ALL OF THE SAME IN ITS SOLE DISCRETION AND WITHOUT PRIOR NOTICE. ALL IMPROVEMENTS, DESIGNS AND CONSTRUCTION ARE SUBJECT TO FIRST OBTAINING THE APPROPRIATE FEDERAL, STATE AND LOCAL PERMITS AND APPROVALS FOR SAME. THESE DRAWINGS AND DEPICTIONS ARE CONCEPTUAL ONLY AND ARE FOR THE CONVENIENCE OF REFERENCE. THEY SHOULD NOT BE RELIED UPON AS REPRESENTATIONS, EXPRESS OR IMPLIED, OF THE FINAL DETAIL OF THE RESIDENCES. THE DEVELOPER EXPRESSLY RESERVES THE RIGHT TO MAKE MODIFICATIONS, REVISIONS AND CHANGES IT DEEMES DESIRABLE IN ITS SOLE AND ABSOLUTE DISCRETION.

KEYPLAN

SKY POOL DECK

LEVEL 55

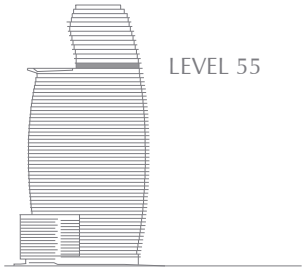
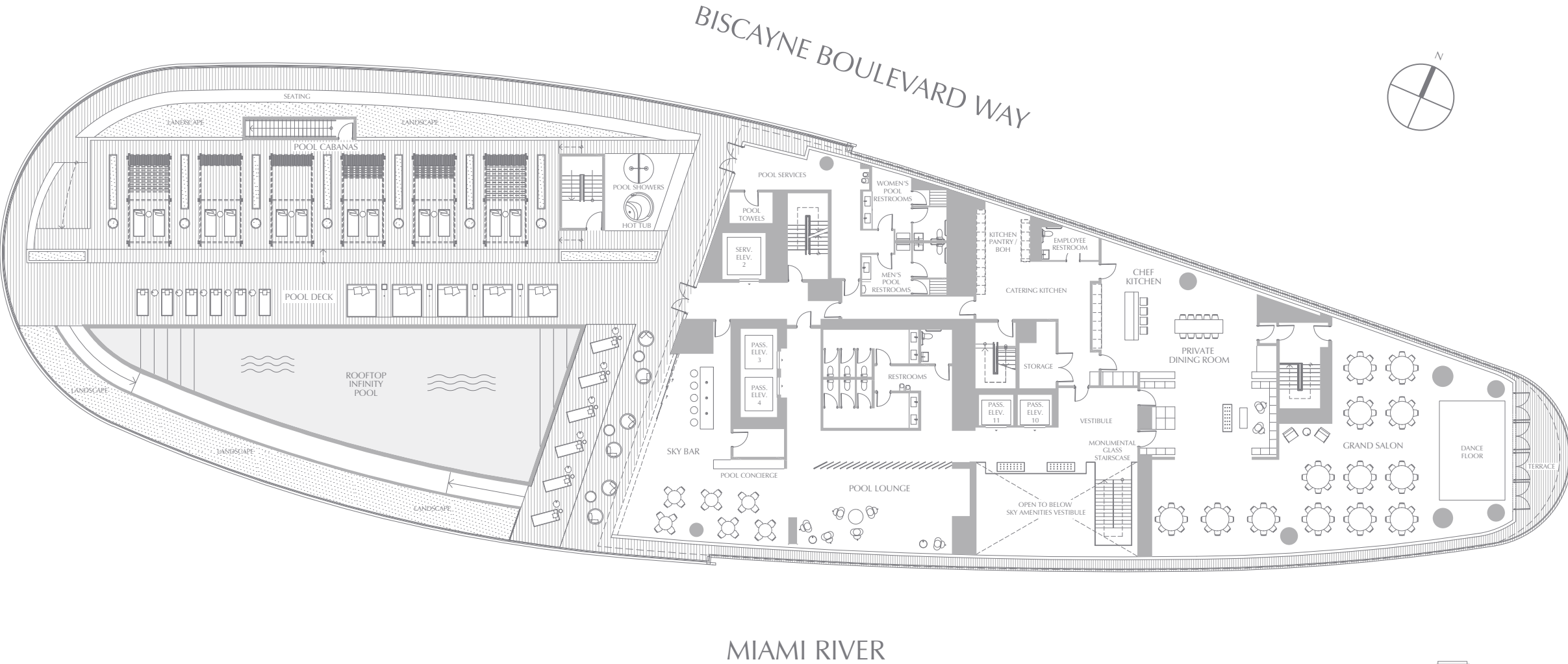


ASTON MARTIN

RESIDENCES

at

300 BISCAYNE BOULEVARD WAY
MIAMI



ALL PLANS, FEATURES AND AMENITIES DEPICTED HEREIN ARE BASED UPON PRELIMINARY DEVELOPMENT PLANS, AND ARE SUBJECT TO CHANGE WITHOUT NOTICE IN THE MANNER PROVIDED IN THE OFFERING DOCUMENTS. NO GUARANTEES OR REPRESENTATIONS WHATSOEVER ARE MADE THAT ANY PLANS, FEATURES, AMENITIES OR FACILITIES WILL BE PROVIDED OR, IF PROVIDED, WILL BE OF THE SAME TYPE, SIZE, LOCATION OR NATURE AS DEPICTED OR DESCRIBED HEREIN. THE SKETCHES, RENDERINGS, GRAPHIC MATERIALS, PLANS, SPECIFICATIONS, TERMS, CONDITIONS AND STATEMENTS CONTAINED IN THIS BROCHURE ARE PROPOSED ONLY, AND THE DEVELOPER RESERVES THE RIGHT TO MODIFY, REVISE OR WITHDRAW ANY OR ALL OF THE SAME IN ITS SOLE DISCRETION AND WITHOUT PRIOR NOTICE. ALL IMPROVEMENTS, DESIGNS AND CONSTRUCTION ARE SUBJECT TO FIRST OBTAINING THE APPROPRIATE FEDERAL, STATE AND LOCAL PERMITS AND APPROVALS FOR SAME. THESE DRAWINGS AND DEPICTIONS ARE CONCEPTUAL ONLY AND ARE FOR THE CONVENIENCE OF REFERENCE. THEY SHOULD NOT BE RELIED UPON AS REPRESENTATIONS, EXPRESS OR IMPLIED, OF THE FINAL DETAIL OF THE RESIDENCES. THE DEVELOPER EXPRESSLY RESERVES THE RIGHT TO MAKE MODIFICATIONS, REVISIONS AND CHANGES IT DEEMES DESIRABLE IN ITS SOLE AND ABSOLUTE DISCRETION.

KEYPLAN

SKY AMENITIES

LEVEL 54

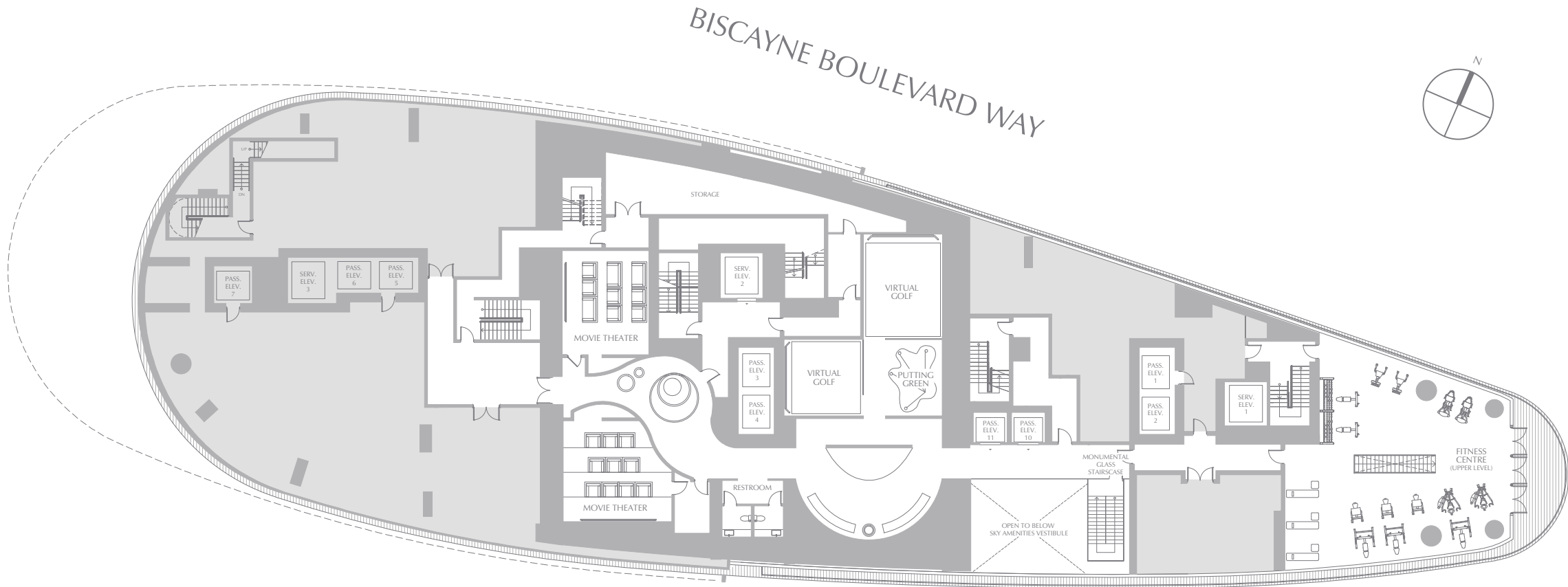


ASTON MARTIN

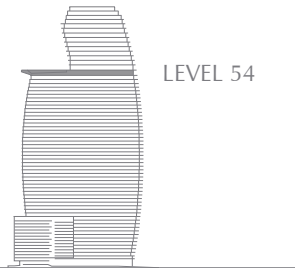
RESIDENCES

at

300 BISCAYNE BOULEVARD WAY
MIAMI



MIAMI RIVER



ALL PLANS, FEATURES AND AMENITIES DEPICTED HEREIN ARE BASED UPON PRELIMINARY DEVELOPMENT PLANS, AND ARE SUBJECT TO CHANGE WITHOUT NOTICE IN THE MANNER PROVIDED IN THE OFFERING DOCUMENTS. NO GUARANTEES OR REPRESENTATIONS WHATSOEVER ARE MADE THAT ANY PLANS, FEATURES, AMENITIES OR FACILITIES WILL BE PROVIDED OR, IF PROVIDED, WILL BE OF THE SAME TYPE, SIZE, LOCATION OR NATURE AS DEPICTED OR DESCRIBED HEREIN. THE SKETCHES, RENDERINGS, GRAPHIC MATERIALS, PLANS, SPECIFICATIONS, TERMS, CONDITIONS AND STATEMENTS CONTAINED IN THIS BROCHURE ARE PROPOSED ONLY, AND THE DEVELOPER RESERVES THE RIGHT TO MODIFY, REVISE OR WITHDRAW ANY OR ALL OF THE SAME IN ITS SOLE DISCRETION AND WITHOUT PRIOR NOTICE. ALL IMPROVEMENTS, DESIGNS AND CONSTRUCTION ARE SUBJECT TO FIRST OBTAINING THE APPROPRIATE FEDERAL, STATE AND LOCAL PERMITS AND APPROVALS FOR SAME. THESE DRAWINGS AND DEPICTIONS ARE CONCEPTUAL ONLY AND ARE FOR THE CONVENIENCE OF REFERENCE. THEY SHOULD NOT BE RELIED UPON AS REPRESENTATIONS, EXPRESS OR IMPLIED, OF THE FINAL DETAIL OF THE RESIDENCES. THE DEVELOPER EXPRESSLY RESERVES THE RIGHT TO MAKE MODIFICATIONS, REVISIONS AND CHANGES IT DEEMES DESIRABLE IN ITS SOLE AND ABSOLUTE DISCRETION.

KEYPLAN

SKY AMENITIES

LEVEL 53

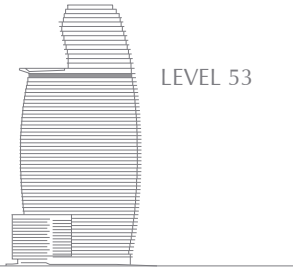


ASTON MARTIN

RESIDENCES

at

300 BISCAYNE BOULEVARD WAY
MIAMI



ALL PLANS, FEATURES AND AMENITIES DEPICTED HEREIN ARE BASED UPON PRELIMINARY DEVELOPMENT PLANS, AND ARE SUBJECT TO CHANGE WITHOUT NOTICE IN THE MANNER PROVIDED IN THE OFFERING DOCUMENTS. NO GUARANTEES OR REPRESENTATIONS WHATSOEVER ARE MADE THAT ANY PLANS, FEATURES, AMENITIES OR FACILITIES WILL BE PROVIDED OR, IF PROVIDED, WILL BE OF THE SAME TYPE, SIZE, LOCATION OR NATURE AS DEPICTED OR DESCRIBED HEREIN. THE SKETCHES, RENDERINGS, GRAPHIC MATERIALS, PLANS, SPECIFICATIONS, TERMS, CONDITIONS AND STATEMENTS CONTAINED IN THIS BROCHURE ARE PROPOSED ONLY, AND THE DEVELOPER RESERVES THE RIGHT TO MODIFY, REVISE OR WITHDRAW ANY OR ALL OF THE SAME IN ITS SOLE DISCRETION AND WITHOUT PRIOR NOTICE. ALL IMPROVEMENTS, DESIGNS AND CONSTRUCTION ARE SUBJECT TO FIRST OBTAINING THE APPROPRIATE FEDERAL, STATE AND LOCAL PERMITS AND APPROVALS FOR SAME. THESE DRAWINGS AND DEPICTIONS ARE CONCEPTUAL ONLY AND ARE FOR THE CONVENIENCE OF REFERENCE. THEY SHOULD NOT BE RELIED UPON AS REPRESENTATIONS, EXPRESS OR IMPLIED, OF THE FINAL DETAIL OF THE RESIDENCES. THE DEVELOPER EXPRESSLY RESERVES THE RIGHT TO MAKE MODIFICATIONS, REVISIONS AND CHANGES IT DEEMES DESIRABLE IN ITS SOLE AND ABSOLUTE DISCRETION.

KEYPLAN

SKY AMENITIES

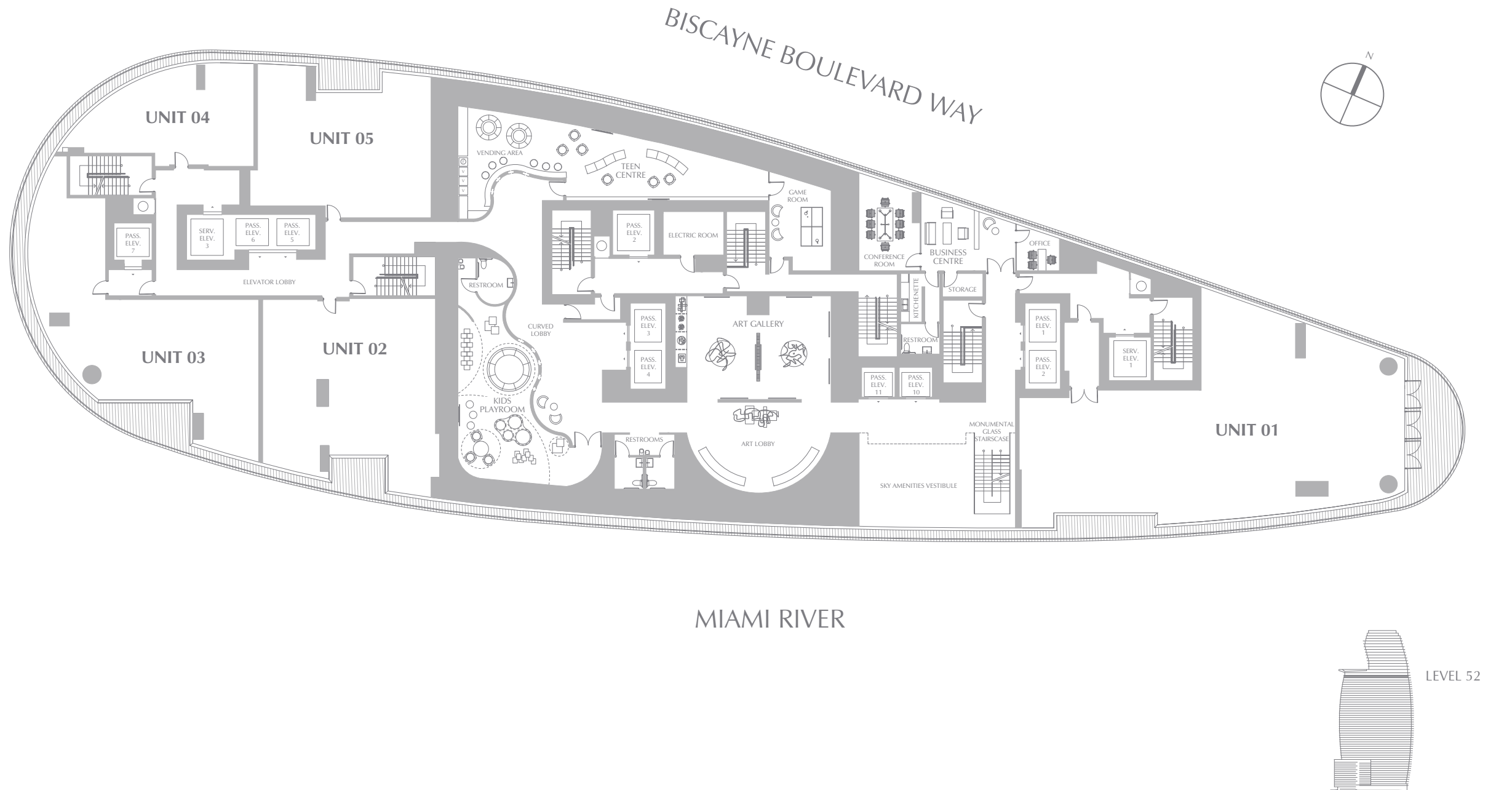
LEVEL 52



ASTON MARTIN

RESIDENCES

at
300 BISCAYNE BOULEVARD WAY
MIAMI



MIAMI RIVER



ALL PLANS, FEATURES AND AMENITIES DEPICTED HEREIN ARE BASED UPON PRELIMINARY DEVELOPMENT PLANS, AND ARE SUBJECT TO CHANGE WITHOUT NOTICE IN THE MANNER PROVIDED IN THE OFFERING DOCUMENTS. NO GUARANTEES OR REPRESENTATIONS WHATSOEVER ARE MADE THAT ANY PLANS, FEATURES, AMENITIES OR FACILITIES WILL BE PROVIDED OR, IF PROVIDED, WILL BE OF THE SAME TYPE, SIZE, LOCATION OR NATURE AS DEPICTED OR DESCRIBED HEREIN. THE SKETCHES, RENDERINGS, GRAPHIC MATERIALS, PLANS, SPECIFICATIONS, TERMS, CONDITIONS AND STATEMENTS CONTAINED IN THIS BROCHURE ARE PROPOSED ONLY, AND THE DEVELOPER RESERVES THE RIGHT TO MODIFY, REVISE OR WITHDRAW ANY OR ALL OF THE SAME IN ITS SOLE DISCRETION AND WITHOUT PRIOR NOTICE. ALL IMPROVEMENTS, DESIGNS AND CONSTRUCTION ARE SUBJECT TO FIRST OBTAINING THE APPROPRIATE FEDERAL, STATE AND LOCAL PERMITS AND APPROVALS FOR SAME. THESE DRAWINGS AND DEPICTIONS ARE CONCEPTUAL ONLY AND ARE FOR THE CONVENIENCE OF REFERENCE. THEY SHOULD NOT BE RELIED UPON AS REPRESENTATIONS, EXPRESS OR IMPLIED, OF THE FINAL DETAIL OF THE RESIDENCES. THE DEVELOPER EXPRESSLY RESERVES THE RIGHT TO MAKE MODIFICATIONS, REVISIONS AND CHANGES IT DEEMES DESIRABLE IN ITS SOLE AND ABSOLUTE DISCRETION.