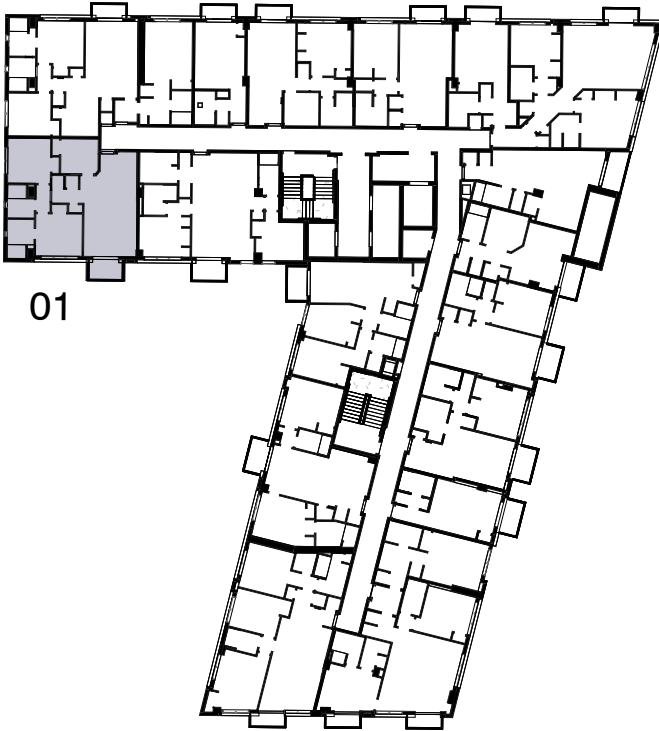


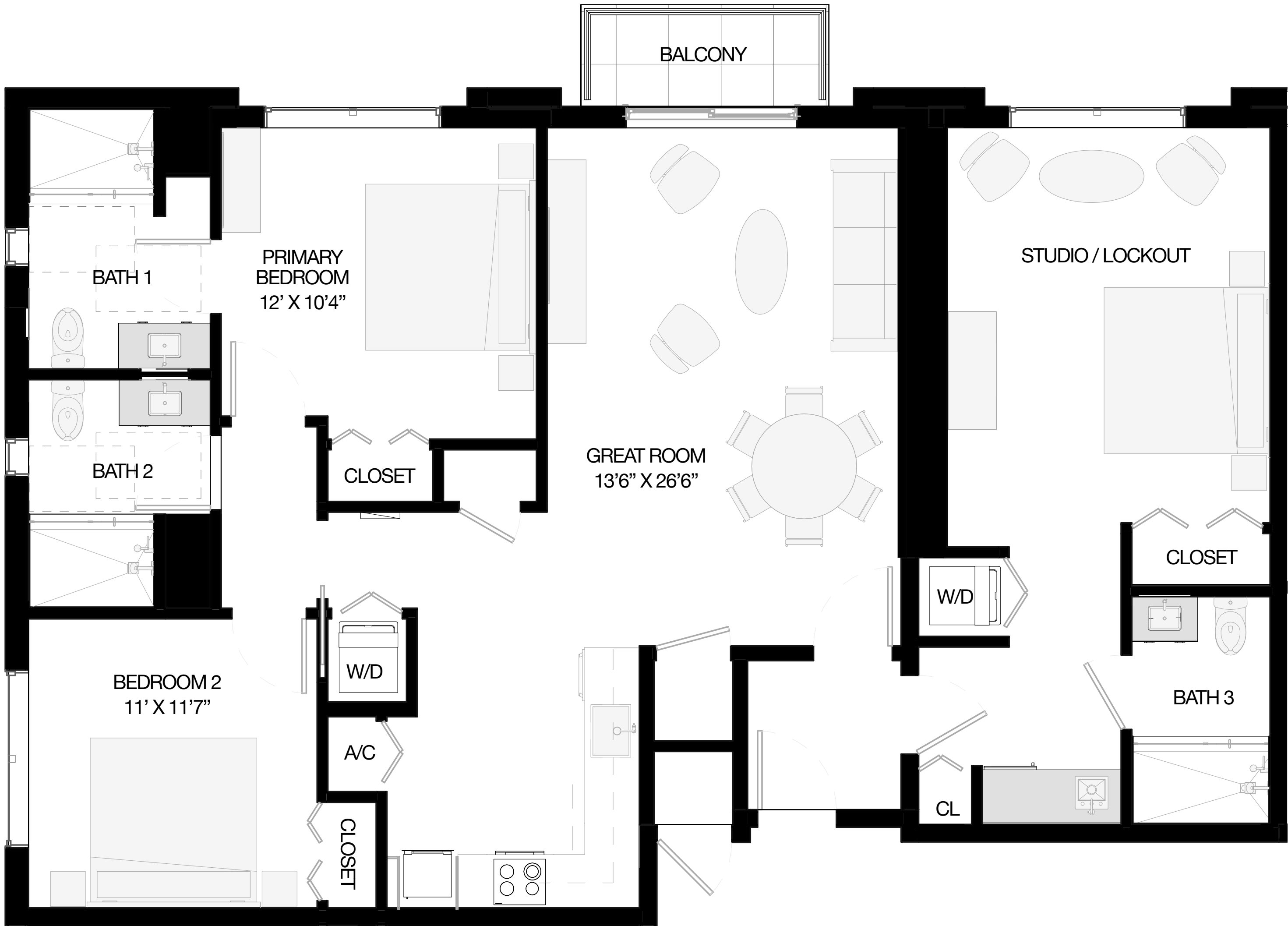
INTERIOR:	1,068 SF	99 M <sup>2</sup>
BALCONY:	52 SF	5 M <sup>2</sup>
TOTAL:	1,120 SF	104 M <sup>2</sup>



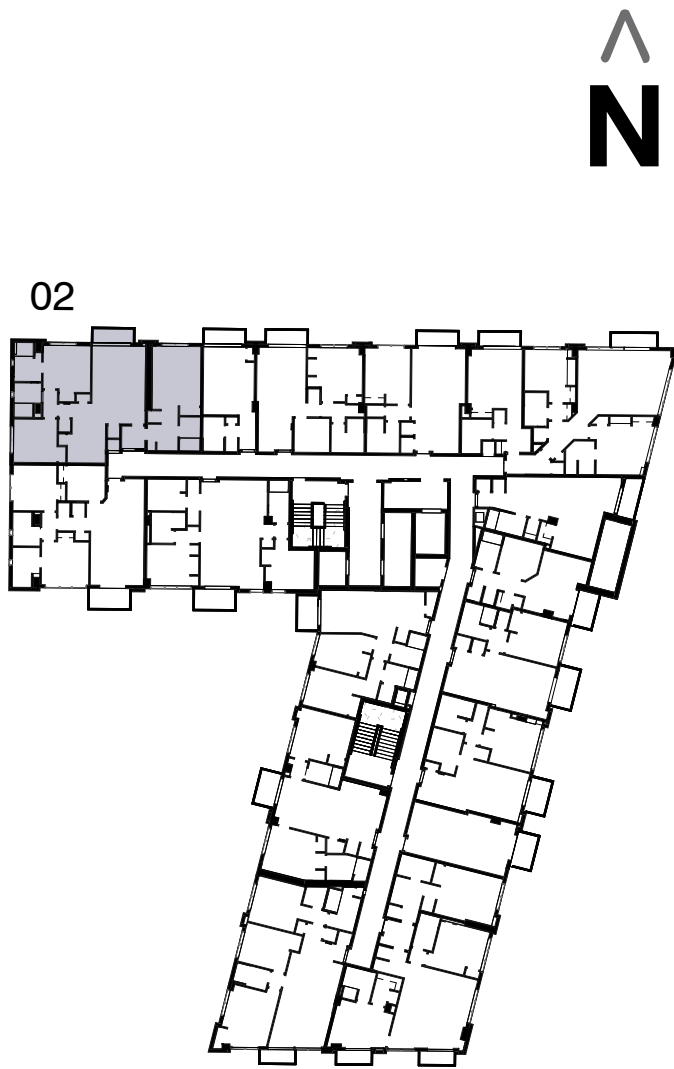
MODEL B3  
2 BEDROOMS + DEN / 2 BATHS  
FLOORS 3-12



All square footages and dimensions, including (without limitation) ceiling heights, are estimates based on preliminary plans and will vary with actual construction. All floor plans, specifications and other development plans are proposed and conceptual only and are subject to change and will not necessarily accurately reflect the final plans and specifications. Stated square footages and dimensions are measured to the exterior boundaries of the exterior walls and the centerline of interior demising walls between units and in fact vary from the square footages and dimensions that would be determined by using the description and definition of the "Unit" set forth in the Declaration, which generally only includes the interior airspace between the perimeter walls and excludes all interior structural components and other common elements or shared facilities. The method of measurement used herein is generally found in sales materials and is provided to allow a prospective buyer to compare the Units with units in other condominium projects that utilize the same method. For the dimensions of the Unit determined as set forth in the Declaration refer to the prospectus documents. Measurements of rooms set forth on this floor plan are generally taken at the farthest points of each given room (as described above and as if the room were a perfect rectangle), without regard for any cutouts, soffits or other variations. Accordingly, the interior air space dimensions of the actual room will be smaller than the product obtained by multiplying the stated length and width. Terraces and other exterior areas are not part of the Unit.



INTERIOR:	1,441 SF	134 M <sup>2</sup>
BALCONY:	37 SF	3.5 M <sup>2</sup>
TOTAL:	1,478 SF	137 M <sup>2</sup>

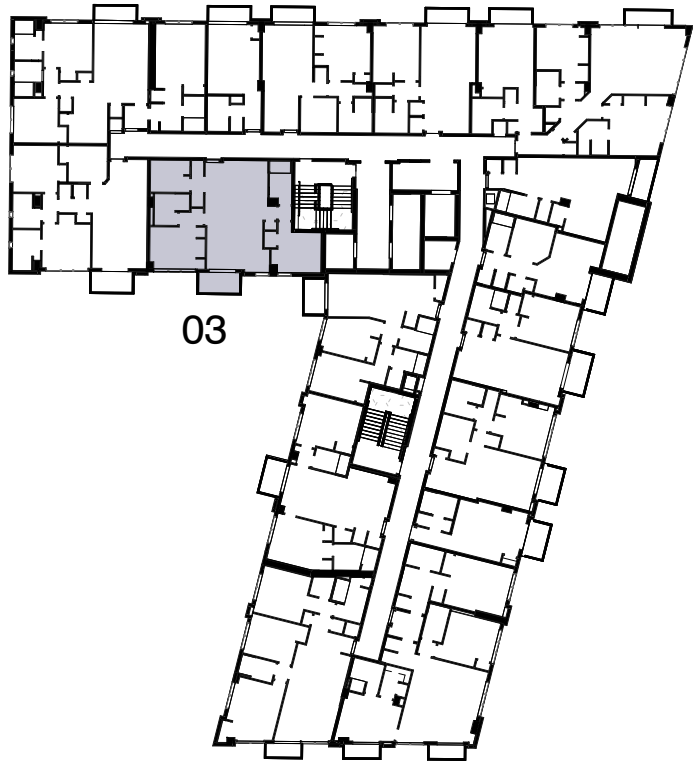


**MODEL C3 (w/ LOCKOUT UNIT)**  
**3 BEDROOMS / 3 BATHS**  
FLOORS 3-12



All square footages and dimensions, including (without limitation) ceiling heights, are estimates based on preliminary plans and will vary with actual construction. All floor plans, specifications and other development plans are proposed and conceptual only and are subject to change and will not necessarily accurately reflect the final plans and specifications. Stated square footages and dimensions are measured to the exterior boundaries of the exterior walls and the centerline of interior demising walls between units and in fact vary from the square footages and dimensions that would be determined by using the description and definition of the "Unit" set forth in the Declaration, which generally only includes the interior airspace between the perimeter walls and excludes all interior structural components and other common elements or shared facilities. The method of measurement used herein is generally found in sales materials and is provided to allow a prospective buyer to compare the Units with units in other condominium projects that utilize the same method. For the dimensions of the Unit determined as set forth in the Declaration refer to the prospectus documents. Measurements of rooms set forth on this floor plan are generally taken at the farthest points of each given room (as described above and as if the room were a perfect rectangle), without regard for any cutouts, soffits or other variations. Accordingly, the interior air space dimensions of the actual room will be smaller than the product obtained by multiplying the stated length and width. Terraces and other exterior areas are not part of the Unit.

INTERIOR: 1,148 SF 107 M<sup>2</sup>  
BALCONY: 52 SF 5 M<sup>2</sup>  
TOTAL: 1,200 SF 111 M<sup>2</sup>

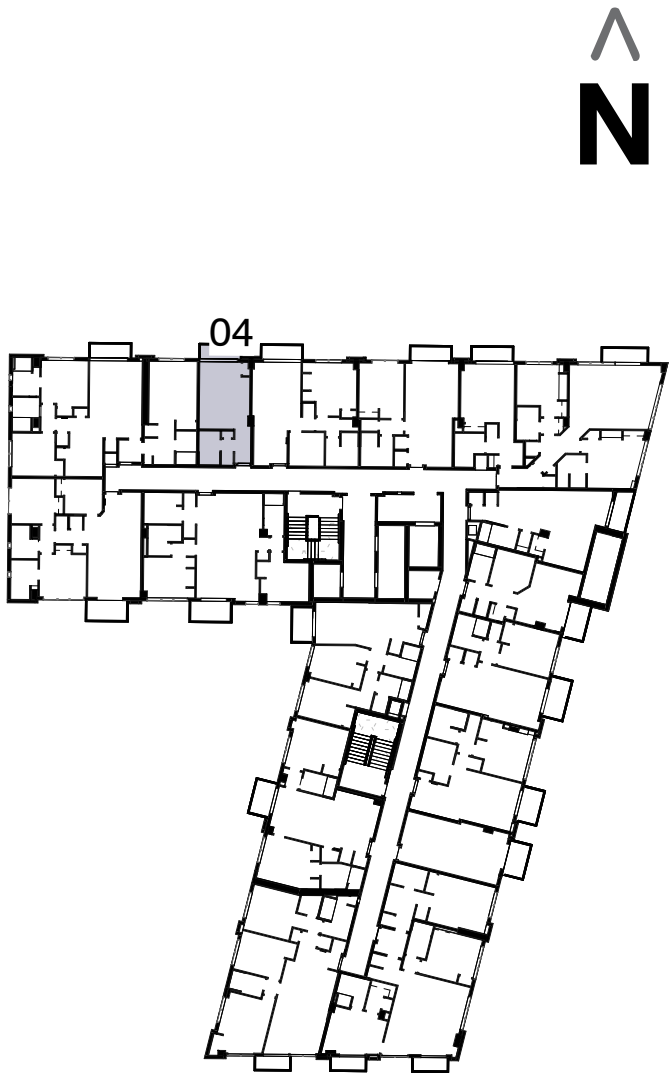


MODEL B7  
2 BEDROOMS + DEN / 2 BATHS  
FLOORS 4-12



All square footages and dimensions, including (without limitation) ceiling heights, are estimates based on preliminary plans and will vary with actual construction. All floor plans, specifications and other development plans are proposed and conceptual only and are subject to change and will not necessarily accurately reflect the final plans and specifications. Stated square footages and dimensions are measured to the exterior boundaries of the exterior walls and the centerline of interior demising walls between units and in fact vary from the square footages and dimensions that would be determined by using the description and definition of the "Unit" set forth in the Declaration, which generally only includes the interior airspace between the perimeter walls and excludes all interior structural components and other common elements or shared facilities. The method of measurement used herein is generally found in sales materials and is provided to allow a prospective buyer to compare the Units with units in other condominium projects that utilize the same method. For the dimensions of the Unit determined as set forth in the Declaration refer to the prospectus documents. Measurements of rooms set forth on this floor plan are generally taken at the farthest points of each given room (as described above and as if the room were a perfect rectangle), without regard for any cutouts, soffits or other variations. Accordingly, the interior air space dimensions of the actual room will be smaller than the product obtained by multiplying the stated length and width. Terraces and other exterior areas are not part of the Unit.

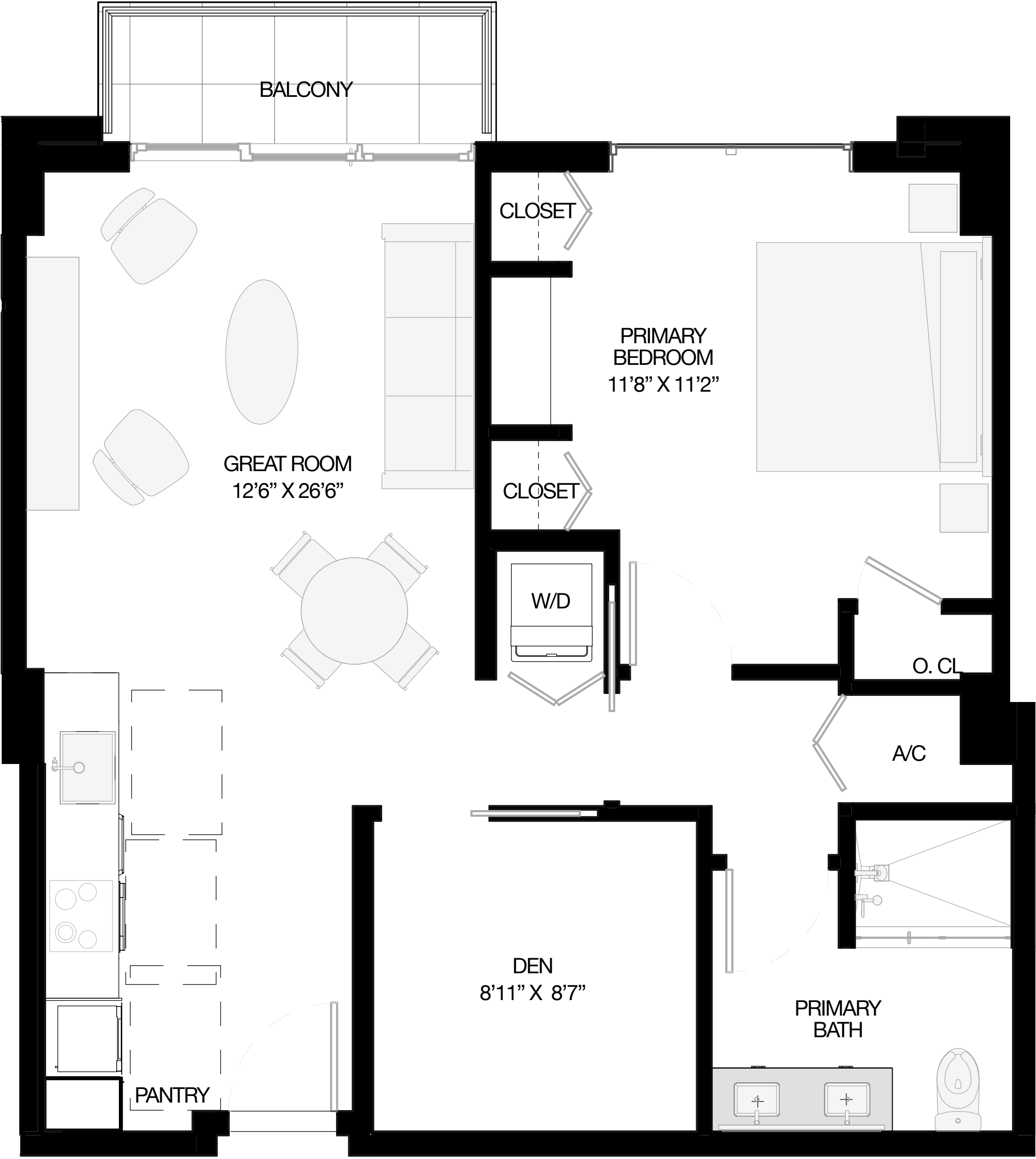
INTERIOR:	385 SF	36 M <sup>2</sup>
BALCONY:	37 SF	3.5 M <sup>2</sup>
TOTAL:	422 SF	39 M <sup>2</sup>



MODEL S3  
STUDIO / 1 BATH  
FLOORS 3-12

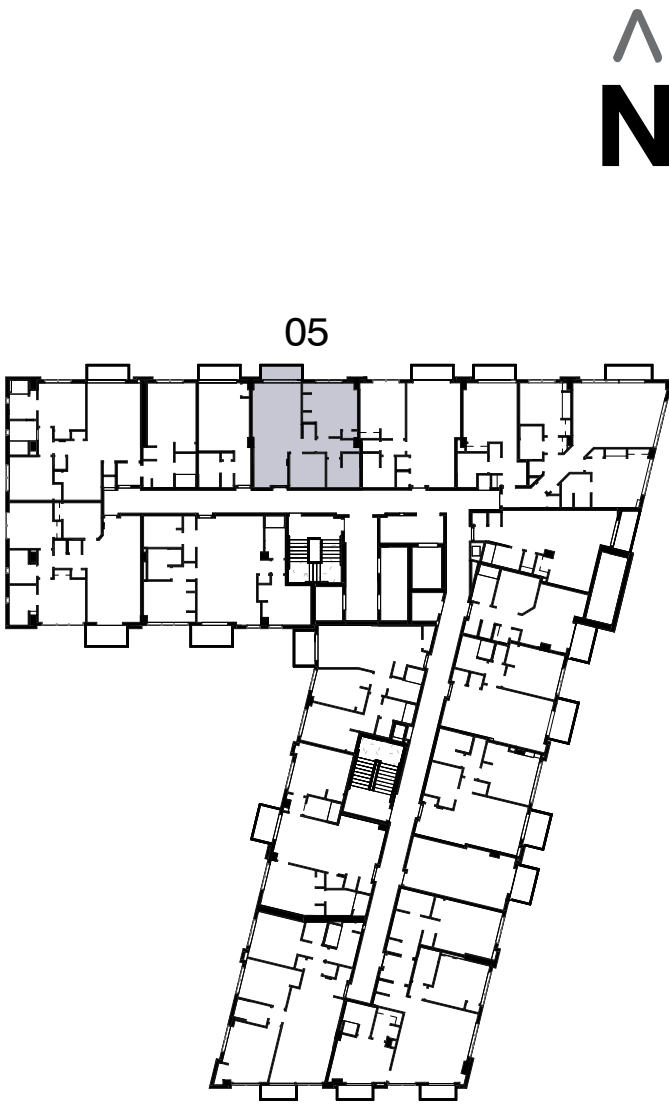


All square footages and dimensions, including (without limitation) ceiling heights, are estimates based on preliminary plans and will vary with actual construction. All floor plans, specifications and other development plans are proposed and conceptual only and are subject to change and will not necessarily accurately reflect the final plans and specifications. Stated square footages and dimensions are measured to the exterior boundaries of the exterior walls and the centerline of interior demising walls between units and in fact vary from the square footages and dimensions that would be determined by using the description and definition of the "Unit" set forth in the Declaration, which generally only includes the interior airspace between the perimeter walls and excludes all interior structural components and other common elements or shared facilities. The method of measurement used herein is generally found in sales materials and is provided to allow a prospective buyer to compare the Units with units in other condominium projects that utilize the same method. For the dimensions of the Unit determined as set forth in the Declaration refer to the prospectus documents. Measurements of rooms set forth on this floor plan are generally taken at the farthest points of each given room (as described above and as if the room were a perfect rectangle), without regard for any cutouts, soffits or other variations. Accordingly, the interior air space dimensions of the actual room will be smaller than the product obtained by multiplying the stated length and width. Terraces and other exterior areas are not part of the Unit.



05 LINE

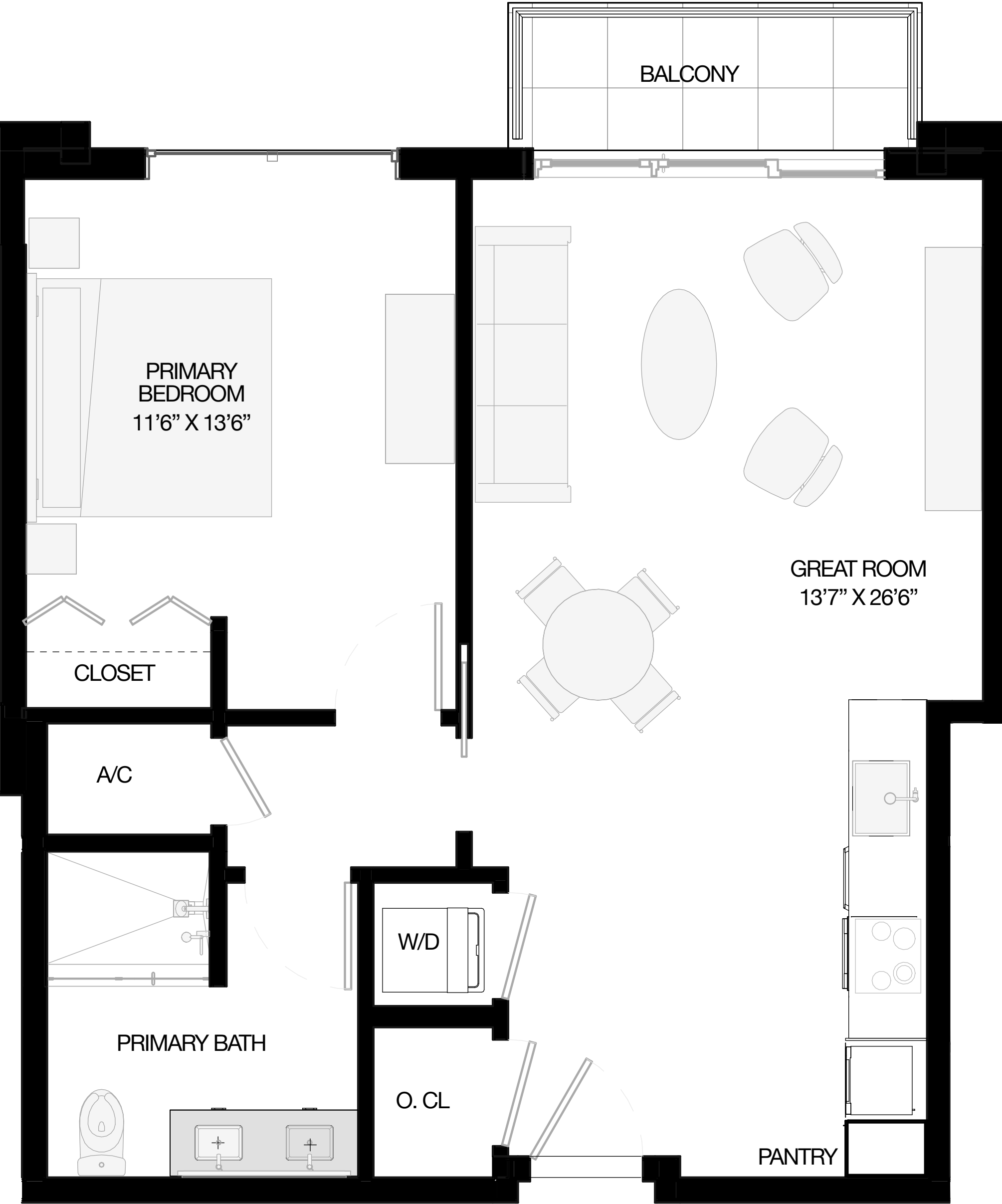
INTERIOR:	770 SF	72 M <sup>2</sup>
BALCONY:	43 SF	4 M <sup>2</sup>
<b>TOTAL:</b>	<b>813 SF</b>	<b>76 M<sup>2</sup></b>



MODEL A1  
1 BEDROOM + DEN / 1 BATH  
FLOORS 3-12

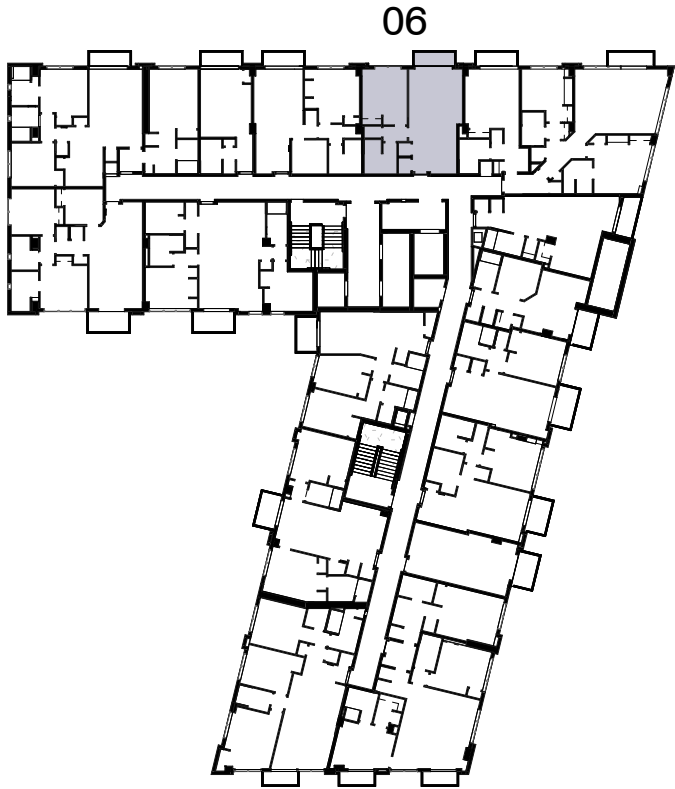


All square footages and dimensions, including (without limitation) ceiling heights, are estimates based on preliminary plans and will vary with actual construction. All floor plans, specifications and other development plans are proposed and conceptual only and are subject to change and will not necessarily accurately reflect the final plans and specifications. Stated square footages and dimensions are measured to the exterior boundaries of the exterior walls and the centerline of interior demising walls between units and in fact vary from the square footages and dimensions that would be determined by using the description and definition of the "Unit" set forth in the Declaration, which generally only includes the interior airspace between the perimeter walls and excludes all interior structural components and other common elements or shared facilities. The method of measurement used herein is generally found in sales materials and is provided to allow a prospective buyer to compare the Units with units in other condominium projects that utilize the same method. For the dimensions of the Unit determined as set forth in the Declaration refer to the prospectus documents. Measurements of rooms set forth on this floor plan are generally taken at the farthest points of each given room (as described above and as if the room were a perfect rectangle), without regard for any cutouts, soffits or other variations. Accordingly, the interior air space dimensions of the actual room will be smaller than the product obtained by multiplying the stated length and width. Terraces and other exterior areas are not part of the Unit.



06 LINE

INTERIOR:	706	SF	66 M <sup>2</sup>
BALCONY:	43	SF	4 M <sup>2</sup>
TOTAL:	749	SF	70 M <sup>2</sup>

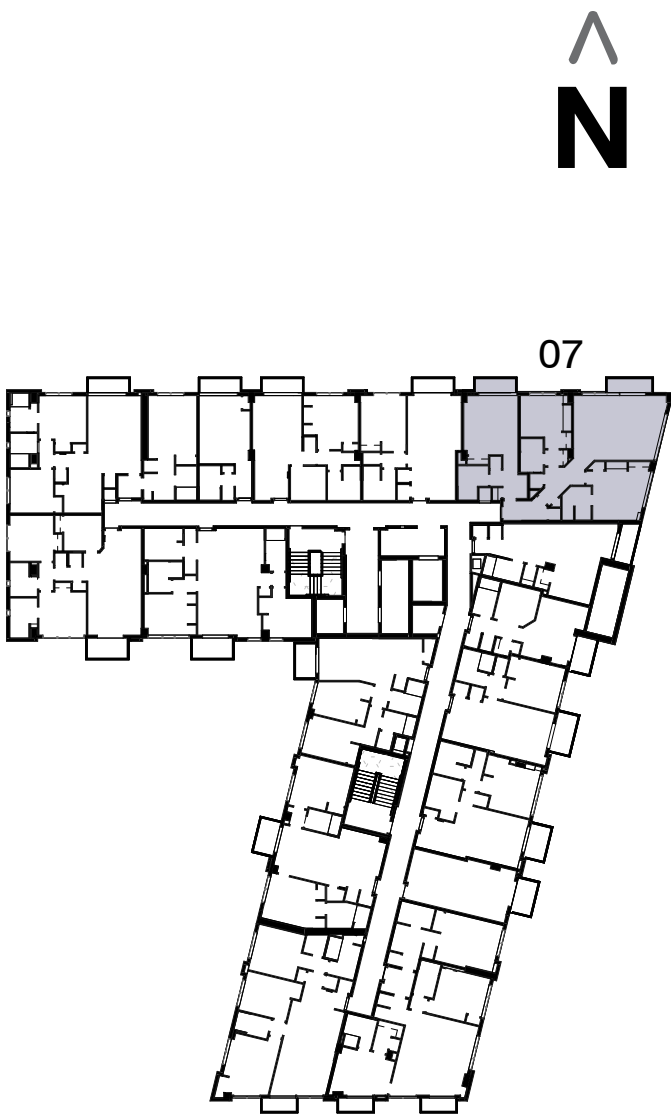
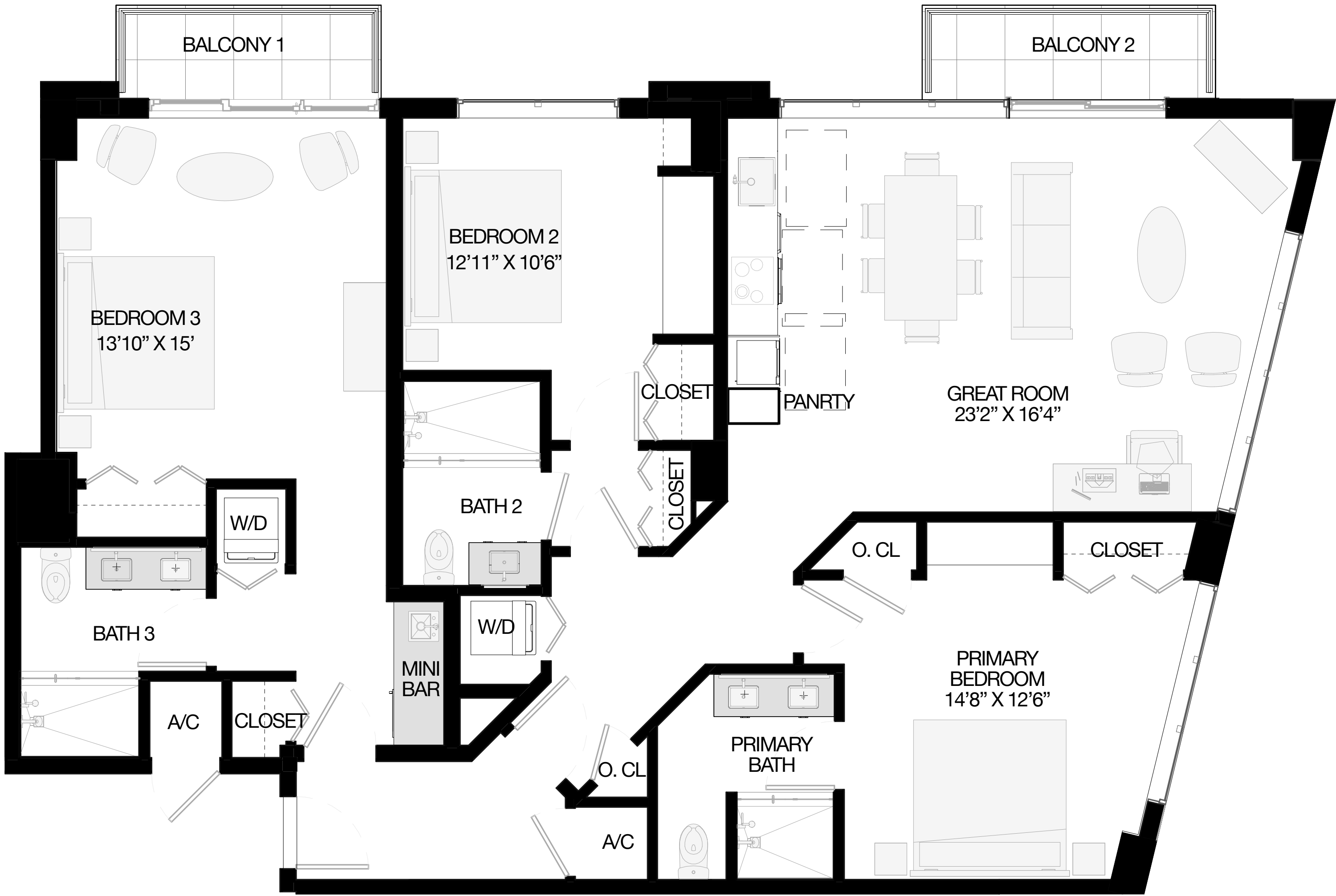


MODEL A4  
1 BEDROOM / 1 BATH  
FLOORS 3-12



All square footages and dimensions, including (without limitation) ceiling heights, are estimates based on preliminary plans and will vary with actual construction. All floor plans, specifications and other development plans are proposed and conceptual only and are subject to change and will not necessarily accurately reflect the final plans and specifications. Stated square footages and dimensions are measured to the exterior boundaries of the exterior walls and the centerline of interior demising walls between units and in fact vary from the square footages and dimensions that would be determined by using the description and definition of the "Unit" set forth in the Declaration, which generally only includes the interior airspace between the perimeter walls and excludes all interior structural components and other common elements or shared facilities. The method of measurement used herein is generally found in sales materials and is provided to allow a prospective buyer to compare the Units with units in other condominium projects that utilize the same method. For the dimensions of the Unit determined as set forth in the Declaration refer to the prospectus documents. Measurements of rooms set forth on this floor plan are generally taken at the farthest points of each given room (as described above and as if the room were a perfect rectangle), without regard for any cutouts, soffits or other variations. Accordingly, the interior air space dimensions of the actual room will be smaller than the product obtained by multiplying the stated length and width. Terraces and other exterior areas are not part of the Unit.

INTERIOR:	1,600	SF	149 M <sup>2</sup>
BALCONY:	90	SF	8 M <sup>2</sup>
TOTAL:	1,690	SF	157 M <sup>2</sup>

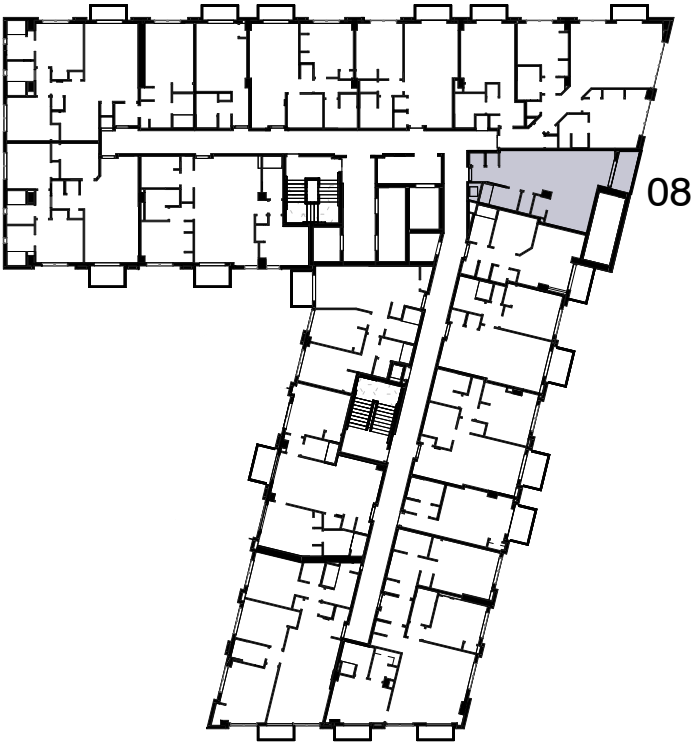
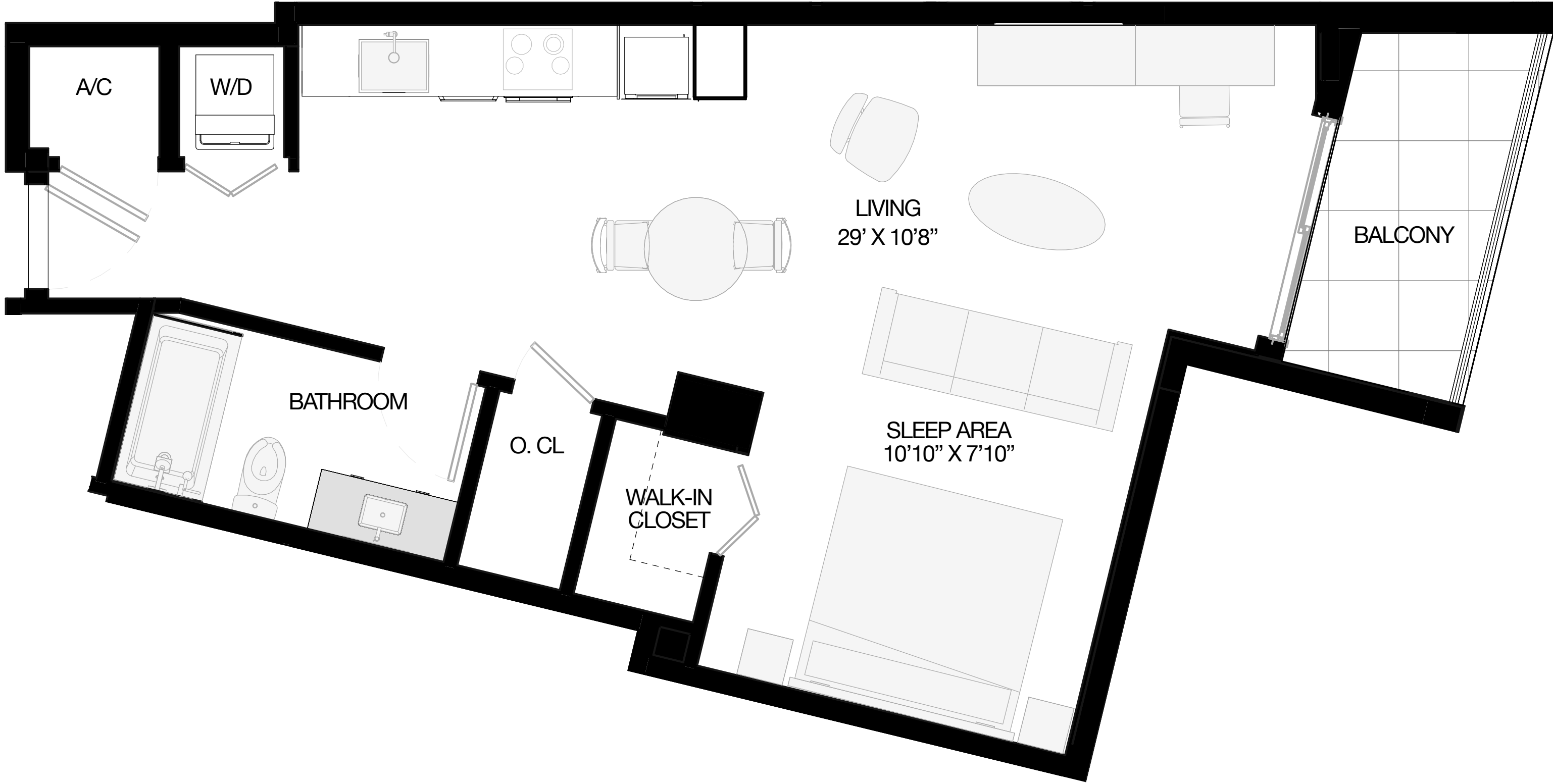


**MODEL C1**  
**3 BEDROOMS / 3 BATHS** (WITH LOCKOUT OPTION)  
FLOORS 3-12



All square footages and dimensions, including (without limitation) ceiling heights, are estimates based on preliminary plans and will vary with actual construction. All floor plans, specifications and other development plans are proposed and conceptual only and are subject to change and will not necessarily accurately reflect the final plans and specifications. Stated square footages and dimensions are measured to the exterior boundaries of the exterior walls and the centerline of interior demising walls between units and in fact vary from the square footages and dimensions that would be determined by using the description and definition of the "Unit" set forth in the Declaration, which generally only includes the interior airspace between the perimeter walls and excludes all interior structural components and other common elements or shared facilities. The method of measurement used herein is generally found in sales materials and is provided to allow a prospective buyer to compare the Units with units in other condominium projects that utilize the same method. For the dimensions of the Unit determined as set forth in the Declaration refer to the prospectus documents. Measurements of rooms set forth on this floor plan are generally taken at the farthest points of each given room (as described above and as if the room were a perfect rectangle), without regard for any cutouts, soffits or other variations. Accordingly, the interior air space dimensions of the actual room will be smaller than the product obtained by multiplying the stated length and width. Terraces and other exterior areas are not part of the Unit.

INTERIOR:	599	SF	56 M <sup>2</sup>
BALCONY:	62	SF	6 M <sup>2</sup>
TOTAL:	662	SF	62 M <sup>2</sup>



MODEL S2

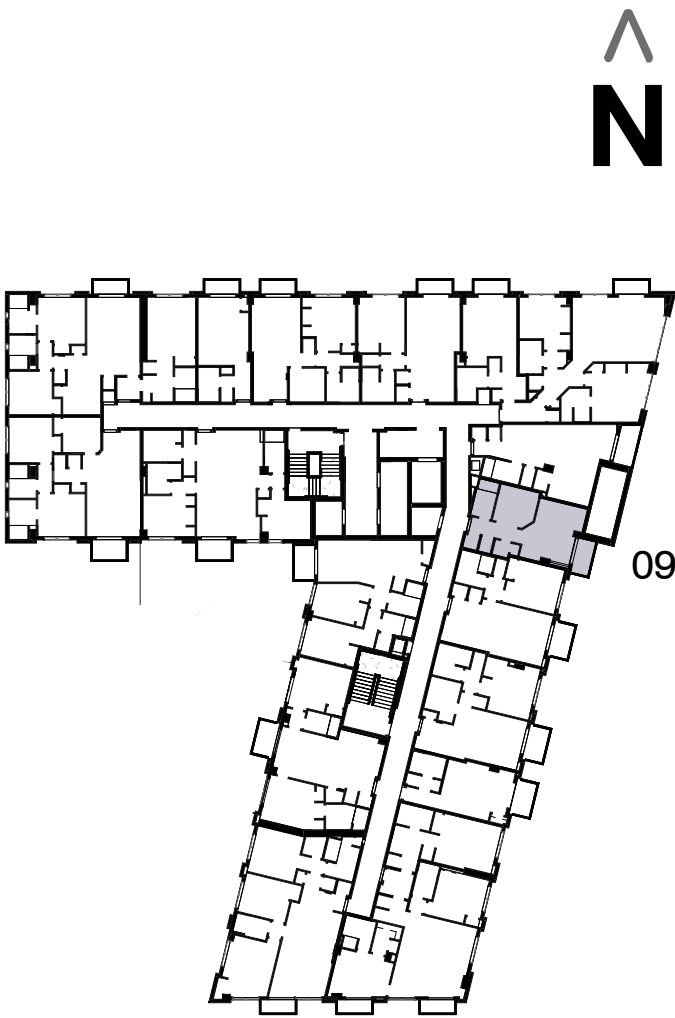
STUDIO / 1 BATH

FLOORS 3-12



All square footages and dimensions, including (without limitation) ceiling heights, are estimates based on preliminary plans and will vary with actual construction. All floor plans, specifications and other development plans are proposed and conceptual only and are subject to change and will not necessarily accurately reflect the final plans and specifications. Stated square footages and dimensions are measured to the exterior boundaries of the exterior walls and the centerline of interior demising walls between units and in fact vary from the square footages and dimensions that would be determined by using the description and definition of the "Unit" set forth in the Declaration, which generally only includes the interior airspace between the perimeter walls and excludes all interior structural components and other common elements or shared facilities. The method of measurement used herein is generally found in sales materials and is provided to allow a prospective buyer to compare the Units with units in other condominium projects that utilize the same method. For the dimensions of the Unit determined as set forth in the Declaration refer to the prospectus documents. Measurements of rooms set forth on this floor plan are generally taken at the farthest points of each given room (as described above and as if the room were a perfect rectangle), without regard for any cutouts, soffits or other variations. Accordingly, the interior air space dimensions of the actual room will be smaller than the product obtained by multiplying the stated length and width. Terraces and other exterior areas are not part of the Unit.

INTERIOR:	510	SF	48 M <sup>2</sup>
BALCONY	45	SF	4 M <sup>2</sup>
TOTAL:	554	SF	52 M <sup>2</sup>



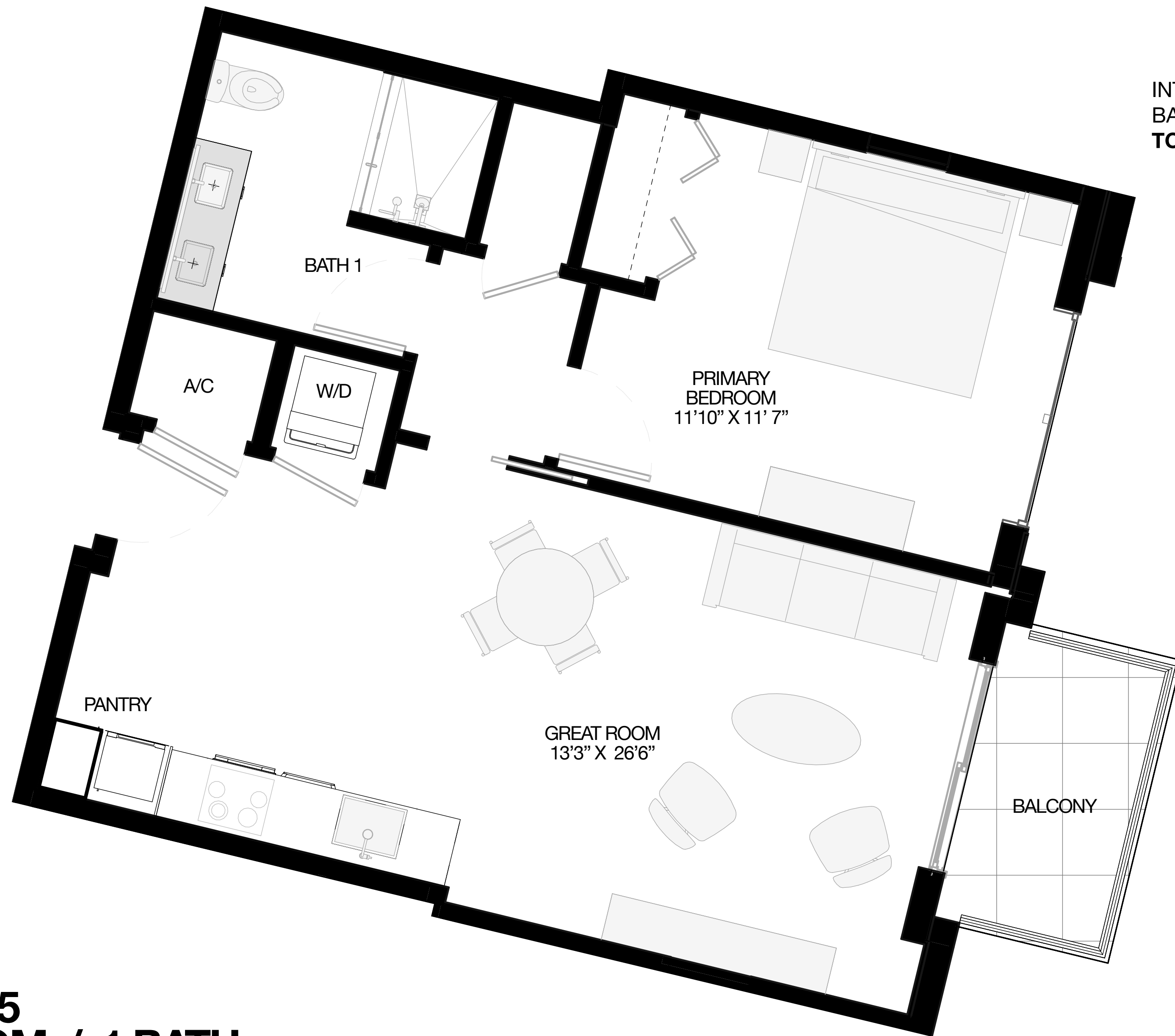
MODEL S1  
STUDIO / 1 BATH  
FLOORS 3-12



All square footages and dimensions, including (without limitation) ceiling heights, are estimates based on preliminary plans and will vary with actual construction. All floor plans, specifications and other development plans are proposed and conceptual only and are subject to change and will not necessarily accurately reflect the final plans and specifications. Stated square footages and dimensions are measured to the exterior boundaries of the exterior walls and the centerline of interior demising walls between units and in fact vary from the square footages and dimensions that would be determined by using the description and definition of the "Unit" set forth in the Declaration, which generally only includes the interior airspace between the perimeter walls and excludes all interior structural components and other common elements or shared facilities. The method of measurement used herein is generally found in sales materials and is provided to allow a prospective buyer to compare the Units with units in other condominium projects that utilize the same method. For the dimensions of the Unit determined as set forth in the Declaration refer to the prospectus documents. Measurements of rooms set forth on this floor plan are generally taken at the farthest points of each given room (as described above and as if the room were a perfect rectangle), without regard for any cutouts, soffits or other variations. Accordingly, the interior air space dimensions of the actual room will be smaller than the product obtained by multiplying the stated length and width. Terraces and other exterior areas are not part of the Unit.

# 10 LINE

INTERIOR:	707 SF	66 M <sup>2</sup>
BALCONY:	52 SF	5 M <sup>2</sup>
<b>TOTAL:</b>	<b>759 SF</b>	<b>71 M<sup>2</sup></b>

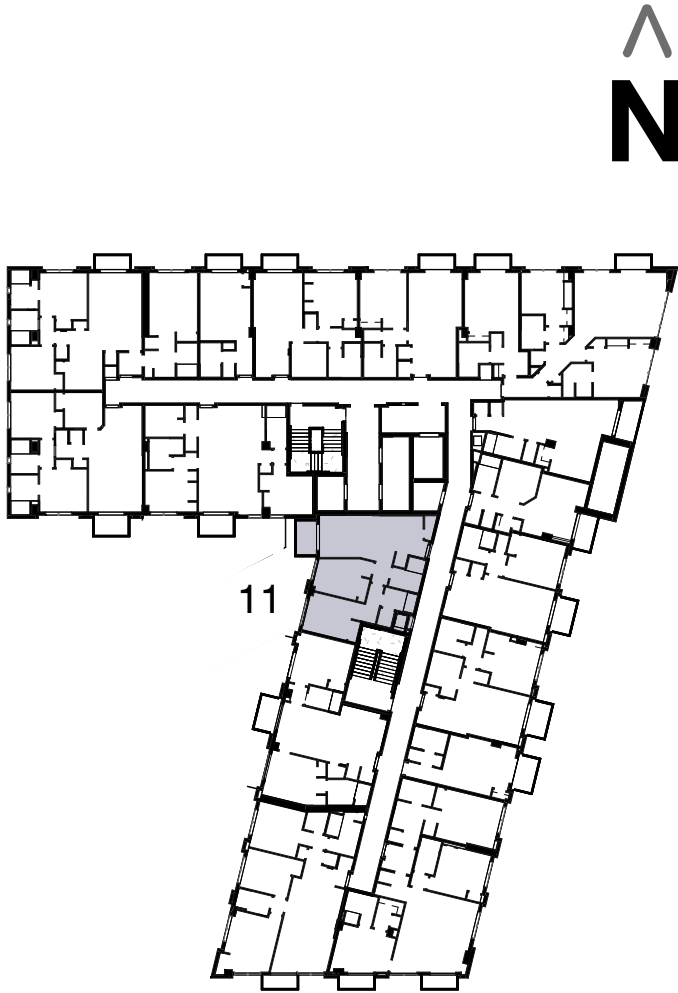
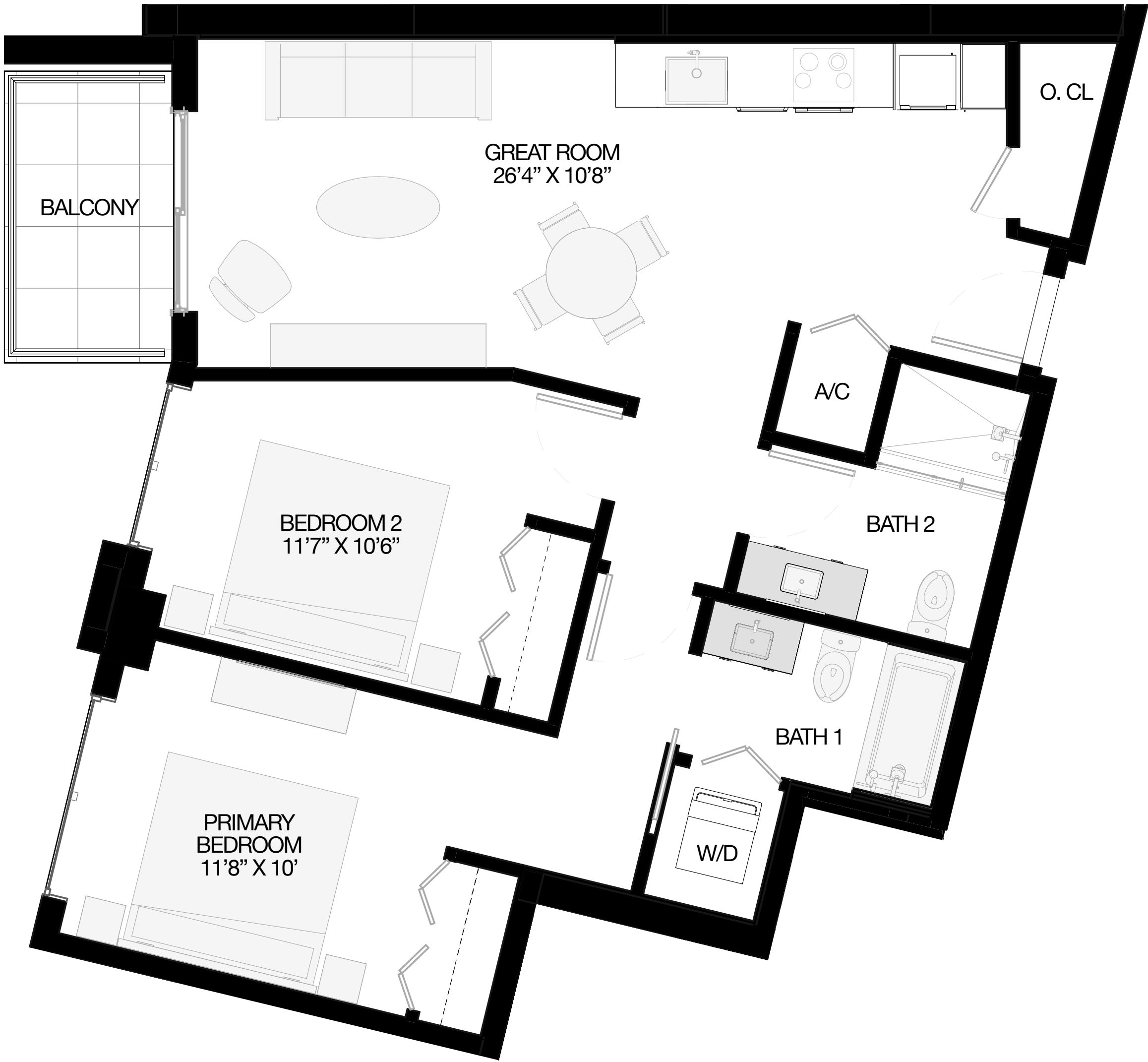


## MODEL A5 1 BEDROOM / 1 BATH FLOORS 3-12



All square footages and dimensions, including (without limitation) ceiling heights, are estimates based on preliminary plans and will vary with actual construction. All floor plans, specifications and other development plans are proposed and conceptual only and are subject to change and will not necessarily accurately reflect the final plans and specifications. Stated square footages and dimensions are measured to the exterior boundaries of the exterior walls and the centerline of interior demising walls between units and in fact vary from the square footages and dimensions that would be determined by using the description and definition of the "Unit" set forth in the Declaration, which generally only includes the interior airspace between the perimeter walls and excludes all interior structural components and other common elements or shared facilities. The method of measurement used herein is generally found in sales materials and is provided to allow a prospective buyer to compare the Units with units in other condominium projects that utilize the same method. For the dimensions of the Unit determined as set forth in the Declaration refer to the prospectus documents. Measurements of rooms set forth on this floor plan are generally taken at the farthest points of each given room (as described above and as if the room were a perfect rectangle), without regard for any cutouts, soffits or other variations. Accordingly, the interior air space dimensions of the actual room will be smaller than the product obtained by multiplying the stated length and width. Terraces and other exterior areas are not part of the Unit.

INTERIOR:	900	SF	84 M <sup>2</sup>
BALCONY:	52	SF	5 M <sup>2</sup>
TOTAL:	952	SF	88 M <sup>2</sup>



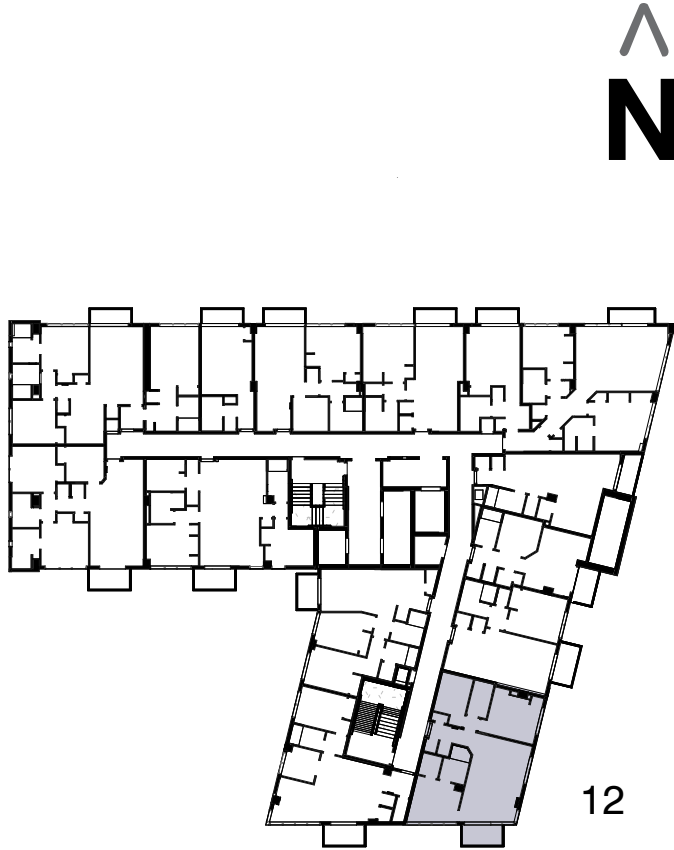
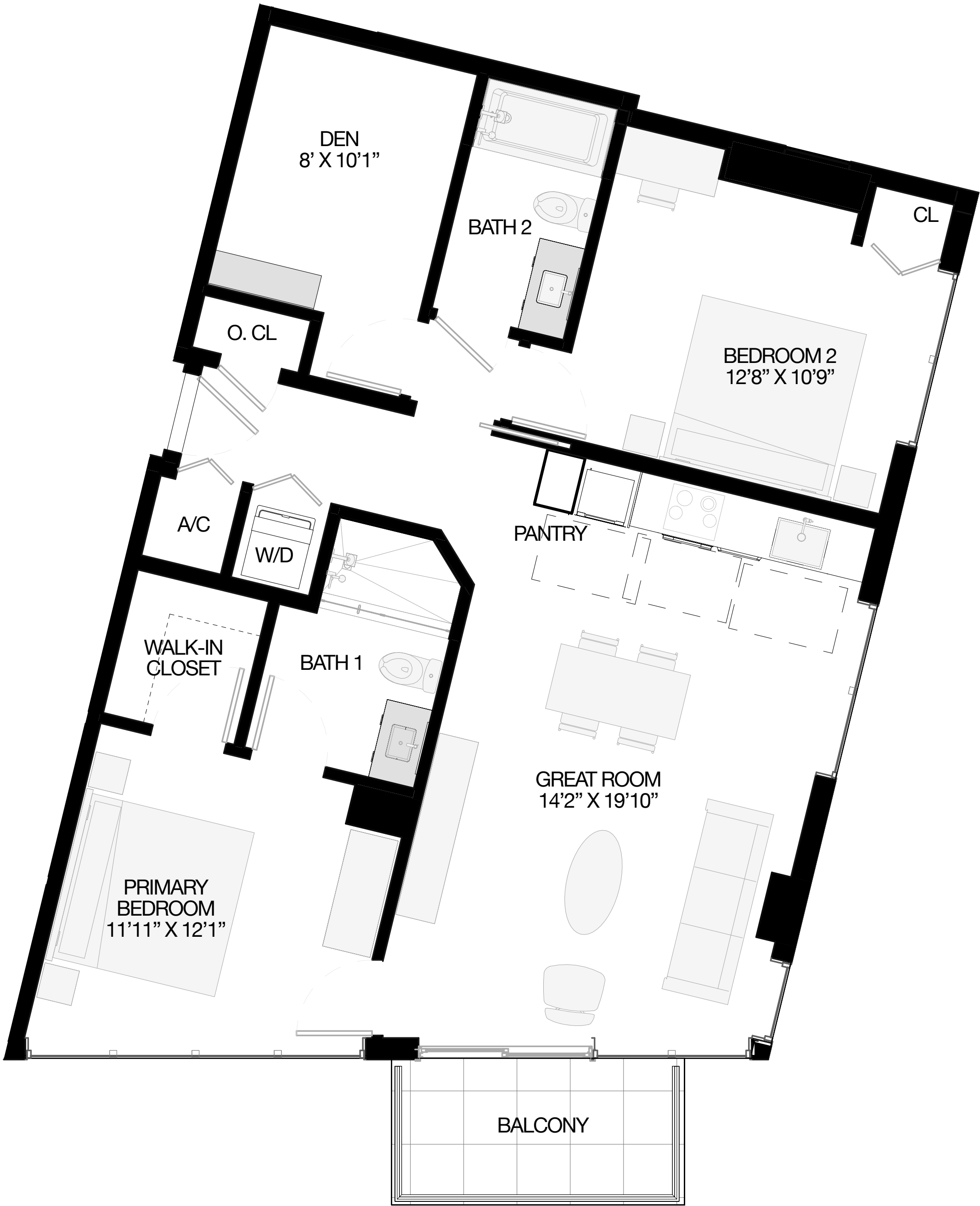
MODEL B6  
2 BEDROOMS / 2 BATHS  
FLOORS 3-12



All square footages and dimensions, including (without limitation) ceiling heights, are estimates based on preliminary plans and will vary with actual construction. All floor plans, specifications and other development plans are proposed and conceptual only and are subject to change and will not necessarily accurately reflect the final plans and specifications. Stated square footages and dimensions are measured to the exterior boundaries of the exterior walls and the centerline of interior demising walls between units and in fact vary from the square footages and dimensions that would be determined by using the description and definition of the "Unit" set forth in the Declaration, which generally only includes the interior airspace between the perimeter walls and excludes all interior structural components and other common elements or shared facilities. The method of measurement used herein is generally found in sales materials and is provided to allow a prospective buyer to compare the Units with units in other condominium projects that utilize the same method. For the dimensions of the Unit determined as set forth in the Declaration refer to the prospectus documents. Measurements of rooms set forth on this floor plan are generally taken at the farthest points of each given room (as described above and as if the room were a perfect rectangle), without regard for any cutouts, soffits or other variations. Accordingly, the interior air space dimensions of the actual room will be smaller than the product obtained by multiplying the stated length and width. Terraces and other exterior areas are not part of the Unit.

# 12 LINE

INTERIOR:	1021	SF	95 M <sup>2</sup>
BALCONY:	61	SF	6 M <sup>2</sup>
TOTAL:	1082	SF	101 M <sup>2</sup>



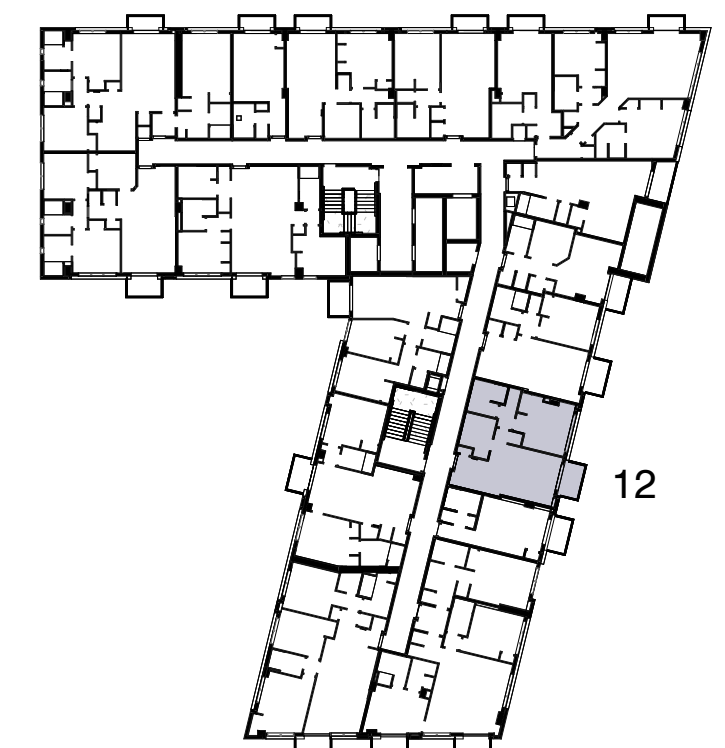
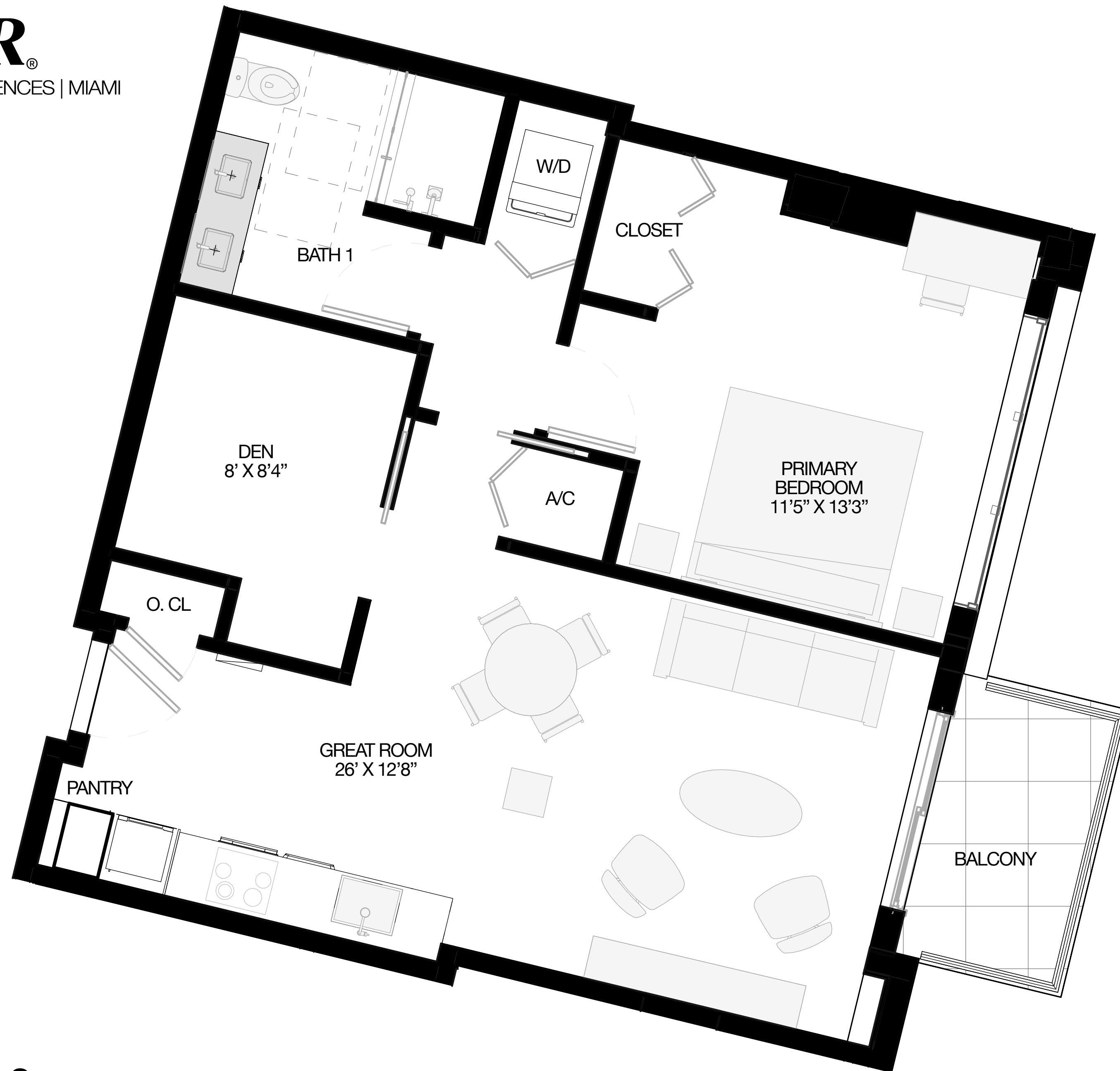
## MODEL B5 2 BEDROOMS + DEN / 2 BATHS FLOORS 10-12



All square footages and dimensions, including (without limitation) ceiling heights, are estimates based on preliminary plans and will vary with actual construction. All floor plans, specifications and other development plans are proposed and conceptual only and are subject to change and will not necessarily accurately reflect the final plans and specifications. Stated square footages and dimensions are measured to the exterior boundaries of the exterior walls and the centerline of interior demising walls between units and in fact vary from the square footages and dimensions that would be determined by using the description and definition of the "Unit" set forth in the Declaration, which generally only includes the interior airspace between the perimeter walls and excludes all interior structural components and other common elements or shared facilities. The method of measurement used herein is generally found in sales materials and is provided to allow a prospective buyer to compare the Units with units in other condominium projects that utilize the same method. For the dimensions of the Unit determined as set forth in the Declaration refer to the prospectus documents. Measurements of rooms set forth on this floor plan are generally taken at the farthest points of each given room (as described above and as if the room were a perfect rectangle), without regard for any cutouts, soffits or other variations. Accordingly, the interior air space dimensions of the actual room will be smaller than the product obtained by multiplying the stated length and width. Terraces and other exterior areas are not part of the Unit.

# 12 LINE

INTERIOR:	774 SF	72 M <sup>2</sup>
BALCONY:	52 SF	5 M <sup>2</sup>
<b>TOTAL:</b>	<b>823 SF</b>	<b>77 M<sup>2</sup></b>



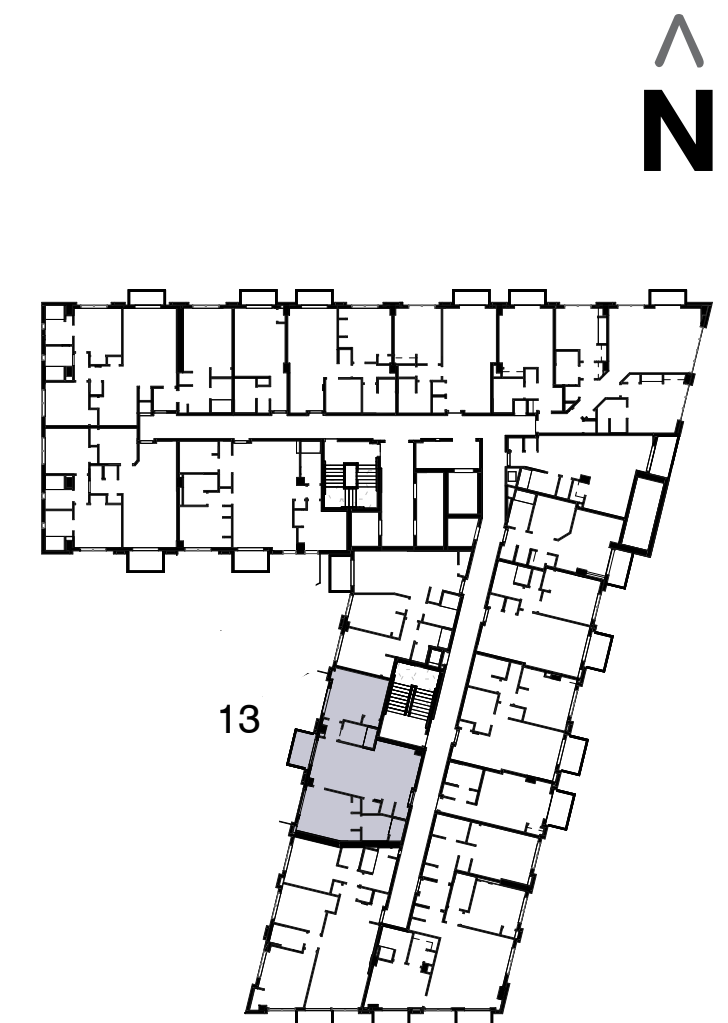
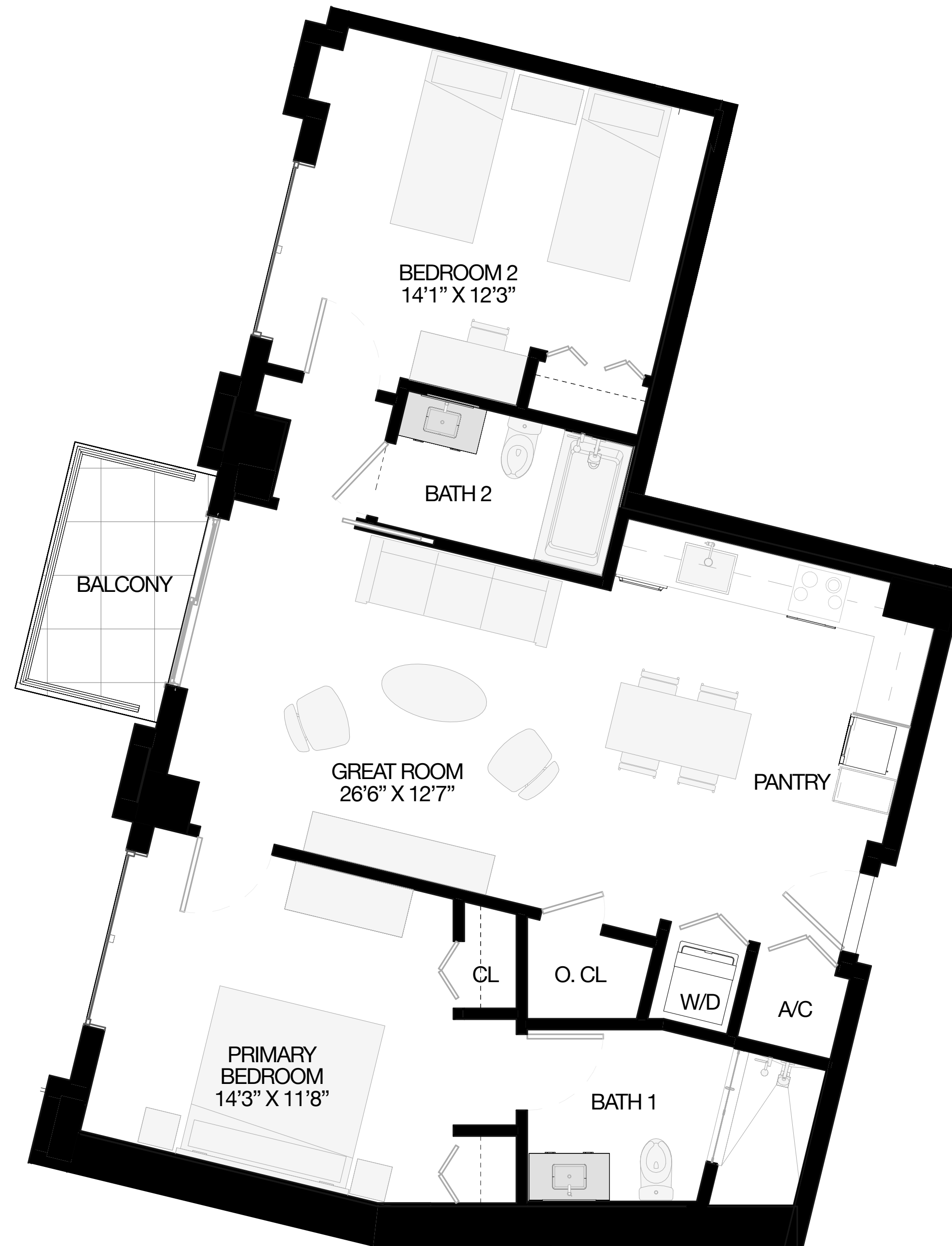
## MODEL A6 1 BEDROOM + DEN / 1 BATH FLOORS 3-8



All square footages and dimensions, including (without limitation) ceiling heights, are estimates based on preliminary plans and will vary with actual construction. All floor plans, specifications and other development plans are proposed and conceptual only and are subject to change and will not necessarily accurately reflect the final plans and specifications. Stated square footages and dimensions are measured to the exterior boundaries of the exterior walls and the centerline of interior demising walls between units and in fact vary from the square footages and dimensions that would be determined by using the description and definition of the "Unit" set forth in the Declaration, which generally only includes the interior airspace between the perimeter walls and excludes all interior structural components and other common elements or shared facilities. The method of measurement used herein is generally found in sales materials and is provided to allow a prospective buyer to compare the Units with units in other condominium projects that utilize the same method. For the dimensions of the Unit determined as set forth in the Declaration refer to the prospectus documents. Measurements of rooms set forth on this floor plan are generally taken at the farthest points of each given room (as described above and as if the room were a perfect rectangle), without regard for any cutouts, soffits or other variations. Accordingly, the interior air space dimensions of the actual room will be smaller than the product obtained by multiplying the stated length and width. Terraces and other exterior areas are not part of the Unit.

# 13 LINE

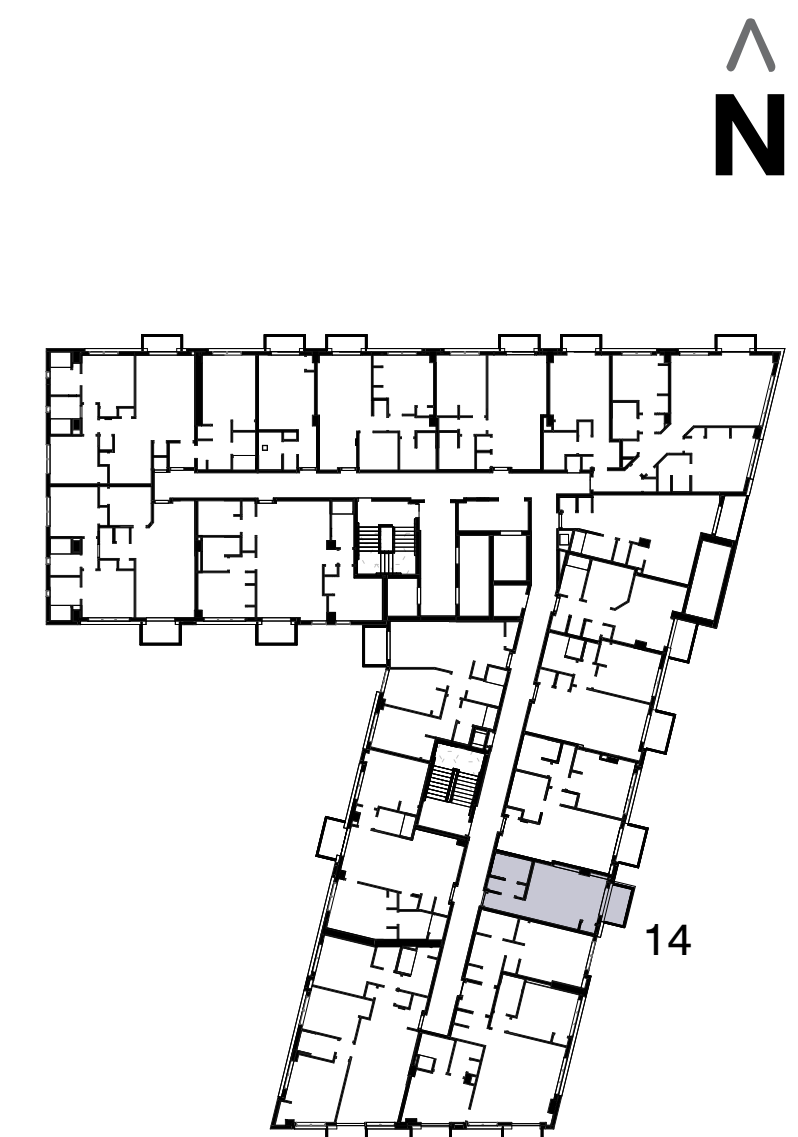
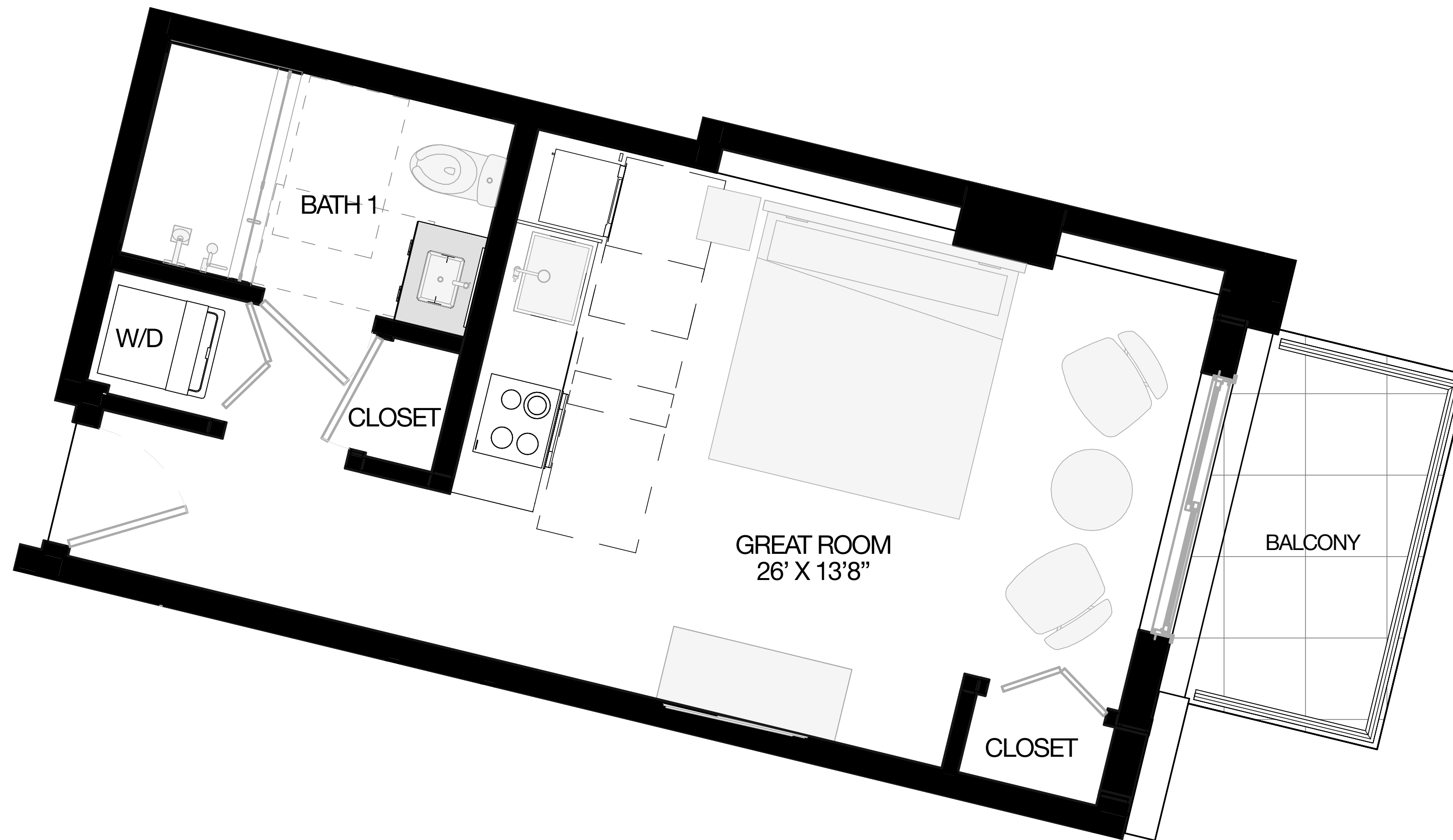
INTERIOR:	1,018	SF	94 M <sup>2</sup>
BALCONY:	52	SF	5 M <sup>2</sup>
<b>TOTAL:</b>	<b>1,070</b>	<b>SF</b>	<b>99 M<sup>2</sup></b>



## MODEL B2 2 BEDROOMS / 2 BATHS FLOORS 3-8



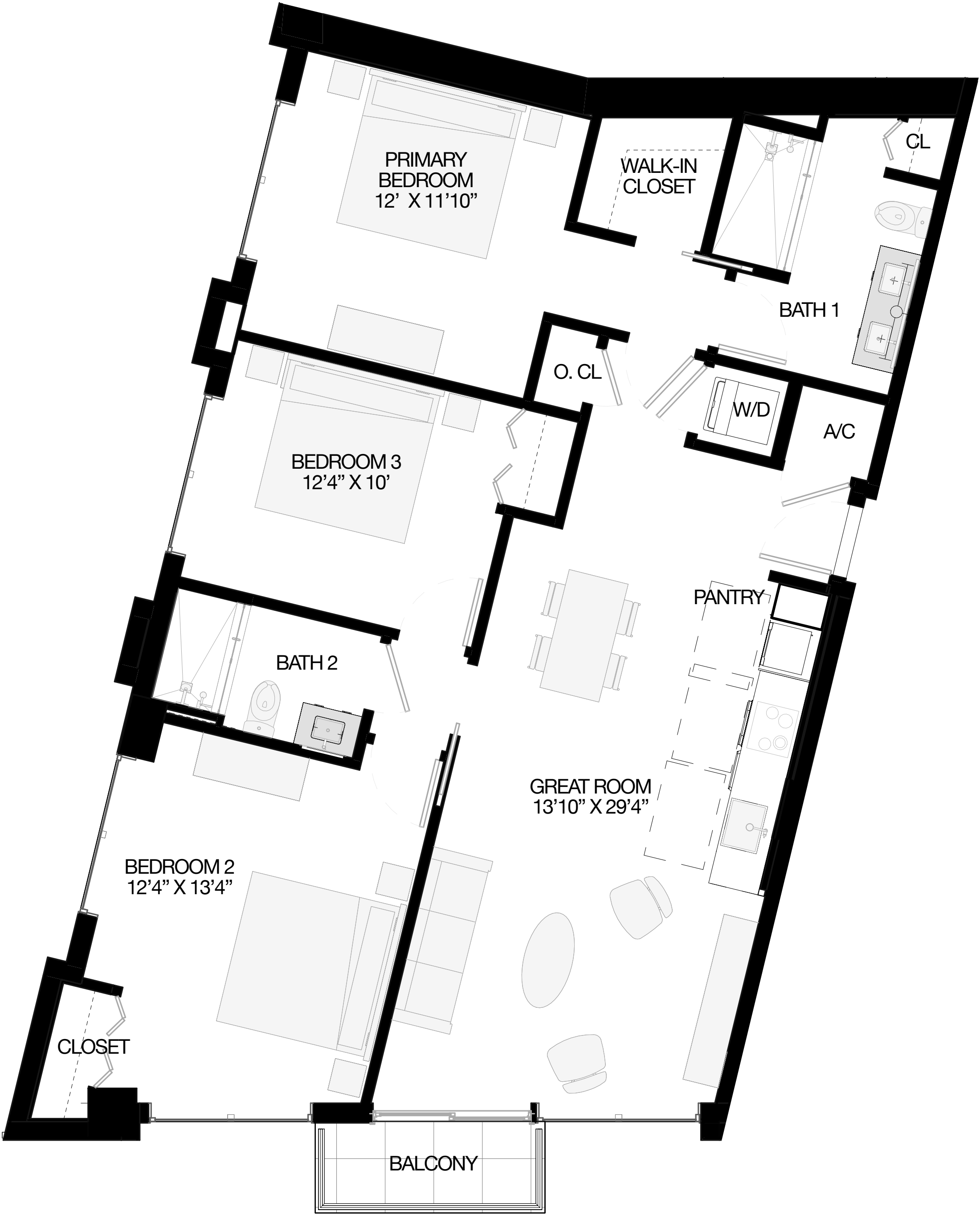
INTERIOR:	388	SF	36 M <sup>2</sup>
BALCONY:	53	SF	5 M <sup>2</sup>
<b>TOTAL:</b>	<b>441</b>	<b>SF</b>	<b>41 M<sup>2</sup></b>



## MODEL S4 STUDIO / 1 BATH FLOORS 3-8

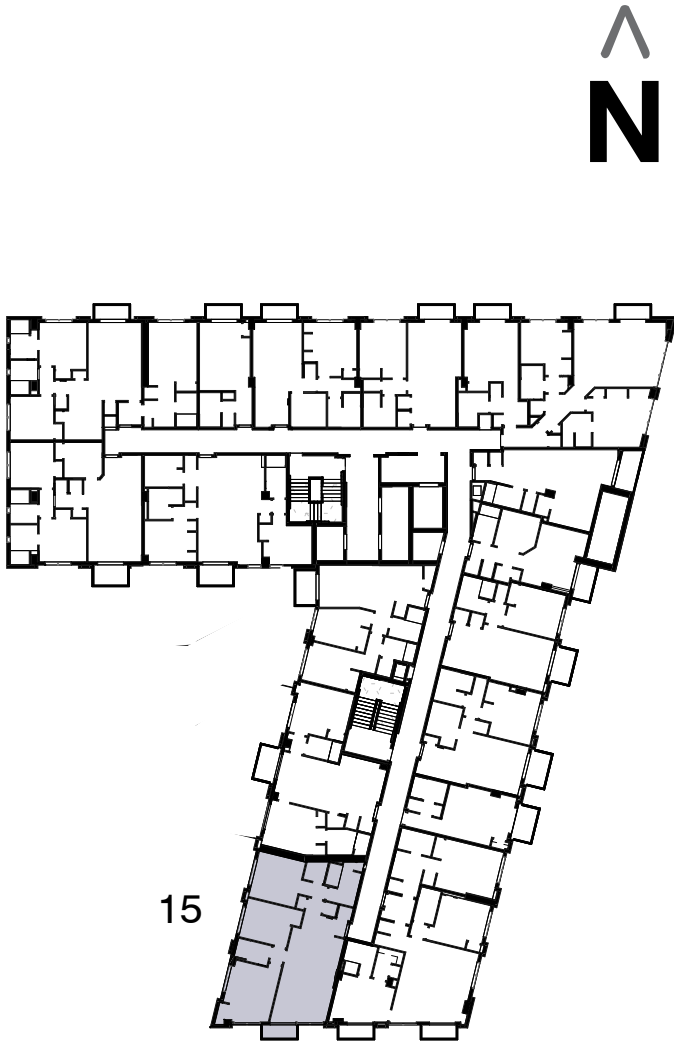


All square footages and dimensions, including (without limitation) ceiling heights, are estimates based on preliminary plans and will vary with actual construction. All floor plans, specifications and other development plans are proposed and conceptual only and are subject to change and will not necessarily accurately reflect the final plans and specifications. Stated square footages and dimensions are measured to the exterior boundaries of the exterior walls and the centerline of interior demising walls between units and in fact vary from the square footages and dimensions that would be determined by using the description and definition of the "Unit" set forth in the Declaration, which generally only includes the interior airspace between the perimeter walls and excludes all interior structural components and other common elements or shared facilities. The method of measurement used herein is generally found in sales materials and is provided to allow a prospective buyer to compare the Units with units in other condominium projects that utilize the same method. For the dimensions of the Unit determined as set forth in the Declaration refer to the prospectus documents. Measurements of rooms set forth on this floor plan are generally taken at the farthest points of each given room (as described above and as if the room were a perfect rectangle), without regard for any cutouts, soffits or other variations. Accordingly, the interior air space dimensions of the actual room will be smaller than the product obtained by multiplying the stated length and width. Terraces and other exterior areas are not part of the Unit.



15 LINE

INTERIOR:	1,240	SF	115 M <sup>2</sup>
BALCONY:	36	SF	3 M <sup>2</sup>
TOTAL:	1,276	SF	119 M <sup>2</sup>



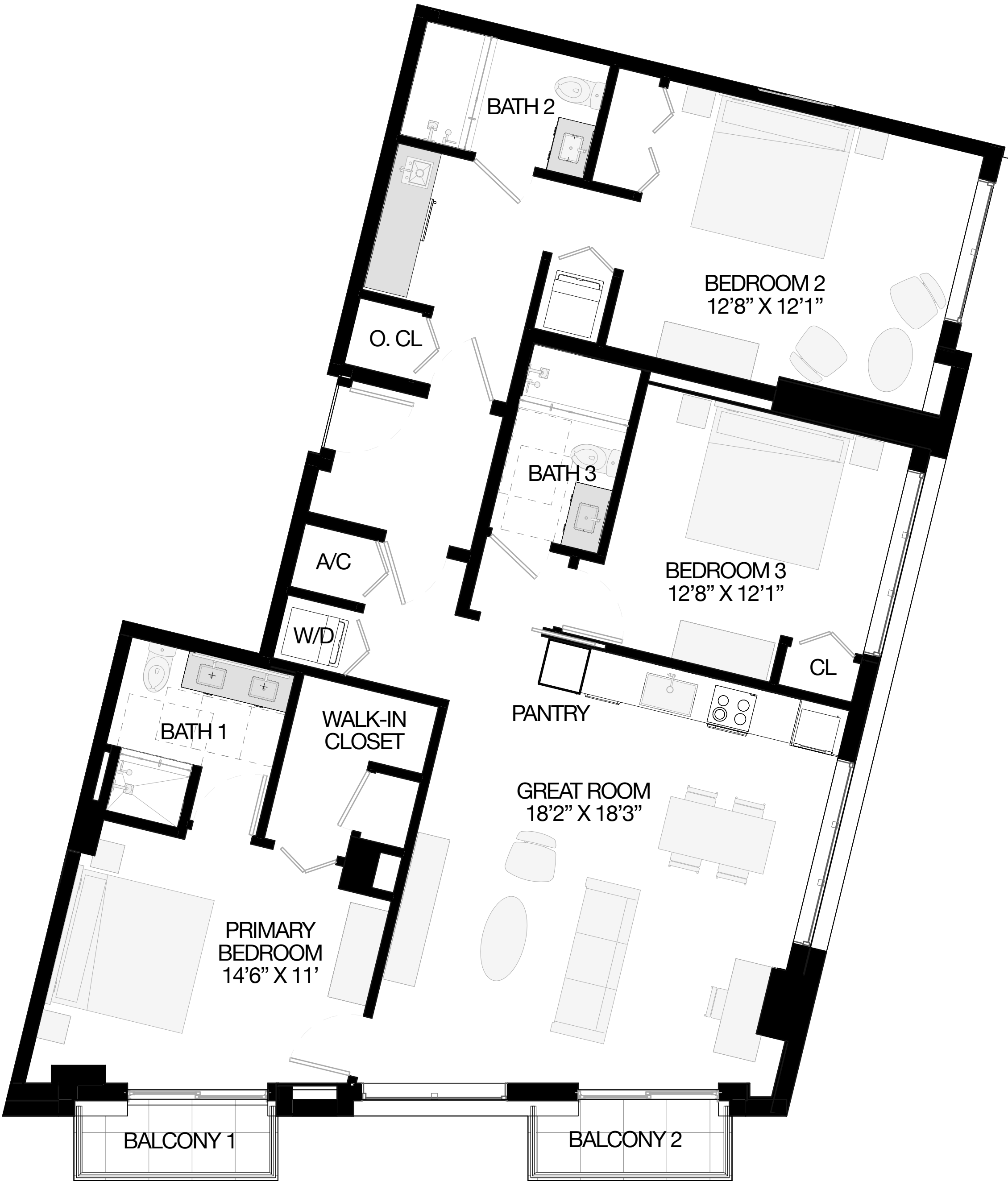
MODEL C2  
3 BEDROOMS / 2 BATHS  
FLOORS 3-8



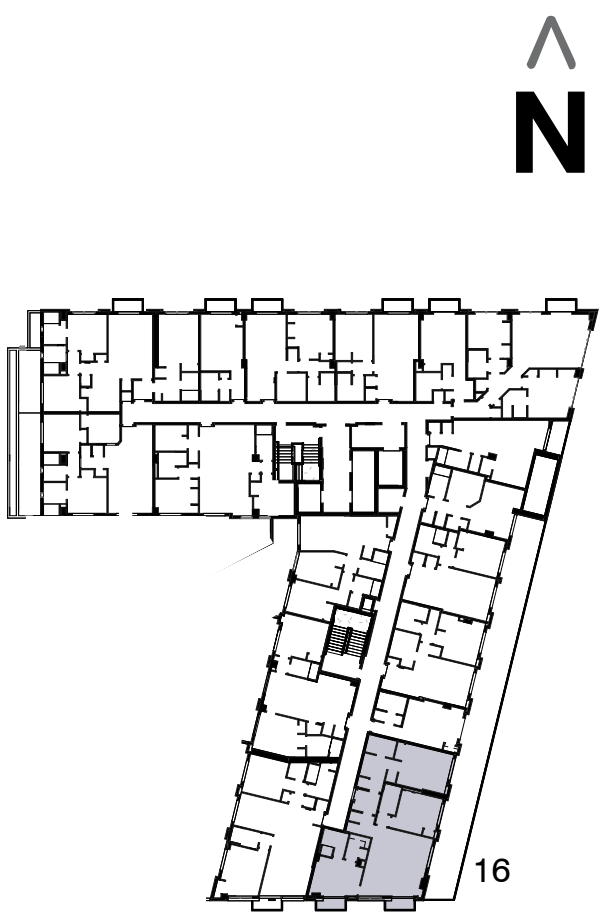
All square footages and dimensions, including (without limitation) ceiling heights, are estimates based on preliminary plans and will vary with actual construction. All floor plans, specifications and other development plans are proposed and conceptual only and are subject to change and will not necessarily accurately reflect the final plans and specifications. Stated square footages and dimensions are measured to the exterior boundaries of the exterior walls and the centerline of interior demising walls between units and in fact vary from the square footages and dimensions that would be determined by using the description and definition of the "Unit" set forth in the Declaration, which generally only includes the interior airspace between the perimeter walls and excludes all interior structural components and other common elements or shared facilities. The method of measurement used herein is generally found in sales materials and is provided to allow a prospective buyer to compare the Units with units in other condominium projects that utilize the same method. For the dimensions of the Unit determined as set forth in the Declaration refer to the prospectus documents. Measurements of rooms set forth on this floor plan are generally taken at the farthest points of each given room (as described above and as if the room were a perfect rectangle), without regard for any cutouts, soffits or other variations. Accordingly, the interior air space dimensions of the actual room will be smaller than the product obtained by multiplying the stated length and width. Terraces and other exterior areas are not part of the Unit.

# 16 LINE

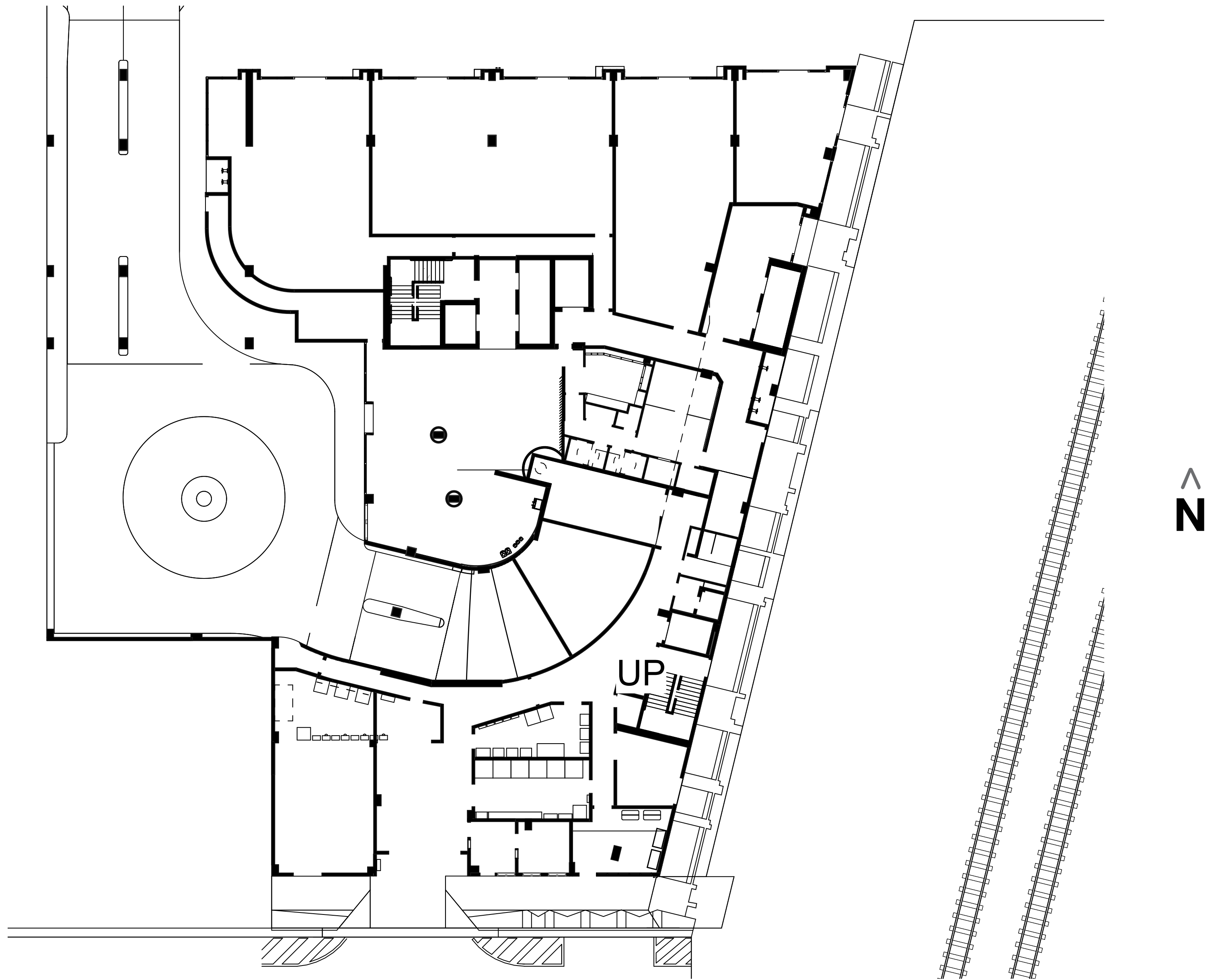
INTERIOR:	1,513 SF	141 M <sup>2</sup>
BALCONY:	70 SF	7 M <sup>2</sup>
TOTAL:	1,582 SF	147 M <sup>2</sup>



**MODEL C4**  
**3 BEDROOMS / 3 BATHS**  
FLOORS 3-8



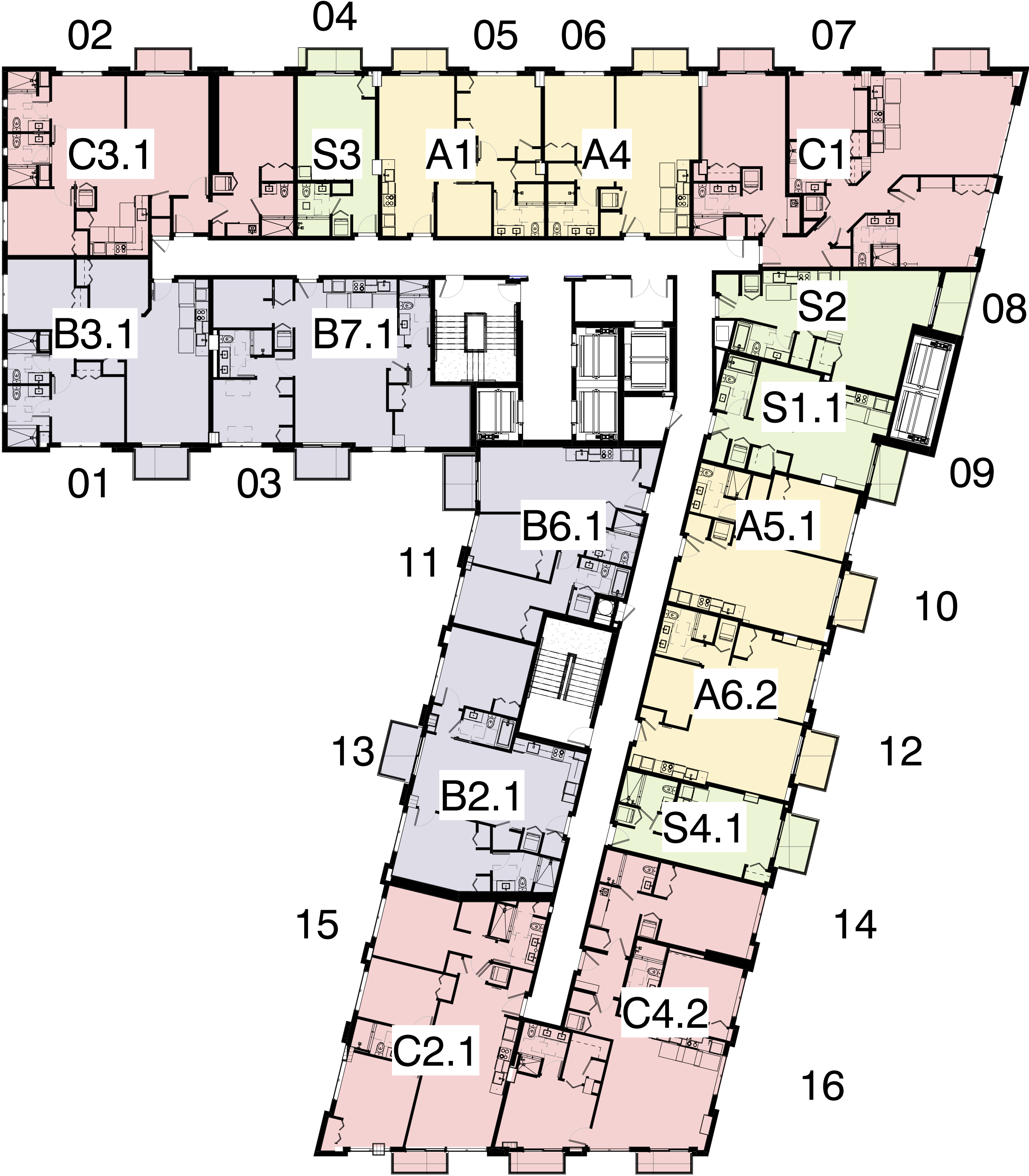
All square footages and dimensions, including (without limitation) ceiling heights, are estimates based on preliminary plans and will vary with actual construction. All floor plans, specifications and other development plans are proposed and conceptual only and are subject to change and will not necessarily accurately reflect the final plans and specifications. Stated square footages and dimensions are measured to the exterior boundaries of the exterior walls and the centerline of interior demising walls between units and in fact vary from the square footages and dimensions that would be determined by using the description and definition of the "Unit" set forth in the Declaration, which generally only includes the interior airspace between the perimeter walls and excludes all interior structural components and other common elements or shared facilities. The method of measurement used herein is generally found in sales materials and is provided to allow a prospective buyer to compare the Units with units in other condominium projects that utilize the same method. For the dimensions of the Unit determined as set forth in the Declaration refer to the prospectus documents. Measurements of rooms set forth on this floor plan are generally taken at the farthest points of each given room (as described above and as if the room were a perfect rectangle), without regard for any cutouts, soffits or other variations. Accordingly, the interior air space dimensions of the actual room will be smaller than the product obtained by multiplying the stated length and width. Terraces and other exterior areas are not part of the Unit.



# LOBBY LEVEL



All square footages and dimensions, including (without limitation) ceiling heights, are estimates based on preliminary plans and will vary with actual construction. All floor plans, specifications and other development plans are proposed and conceptual only and are subject to change and will not necessarily accurately reflect the final plans and specifications. Stated square footages and dimensions are measured to the exterior boundaries of the exterior walls and the centerline of interior demising walls between units and in fact vary from the square footages and dimensions that would be determined by using the description and definition of the "Unit" set forth in the Declaration, which generally only includes the interior airspace between the perimeter walls and excludes all interior structural components and other common elements or shared facilities. The method of measurement used herein is generally found in sales materials and is provided to allow a prospective buyer to compare the Units with units in other condominium projects that utilize the same method. For the dimensions of the Unit determined as set forth in the Declaration refer to the prospectus documents. Measurements of rooms set forth on this floor plan are generally taken at the farthest points of each given room (as described above and as if the room were a perfect rectangle), without regard for any cutouts, soffits or other variations. Accordingly, the interior air space dimensions of the actual room will be smaller than the product obtained by multiplying the stated length and width. Terraces and other exterior areas are not part of the Unit.



- RESIDENCES
- STUDIO**
- STUDIO
  - 1 BEDROOM
  - 2 BEDROOMS
  - 3 BEDROOMS

SIXTH FLOOR  
UNIT MATRIX



All square footages and dimensions, including (without limitation) ceiling heights, are estimates based on preliminary plans and will vary with actual construction. All floor plans, specifications and other development plans are proposed and conceptual only and are subject to change and will not necessarily accurately reflect the final plans and specifications. Stated square footages and dimensions are measured to the exterior boundaries of the exterior walls and the centerline of interior demising walls between units and in fact vary from the square footages and dimensions that would be determined by using the description and definition of the "Unit" set forth in the Declaration, which generally only includes the interior airspace between the perimeter walls and excludes all interior structural components and other common elements or shared facilities. The method of measurement used herein is generally found in sales materials and is provided to allow a prospective buyer to compare the Units with units in other condominium projects that utilize the same method. For the dimensions of the Unit determined as set forth in the Declaration refer to the prospectus documents. Measurements of rooms set forth on this floor plan are generally taken at the farthest points of each given room (as described above and as if the room were a perfect rectangle), without regard for any cutouts, soffits or other variations. Accordingly, the interior air space dimensions of the actual room will be smaller than the product obtained by multiplying the stated length and width. Terraces and other exterior areas are not part of the Unit.